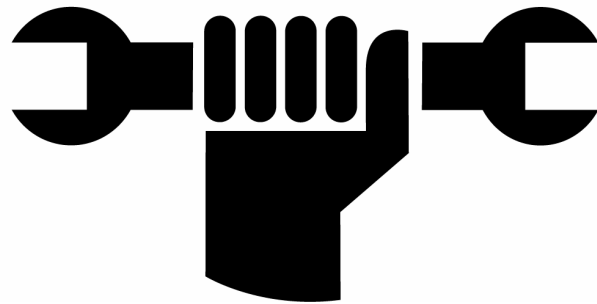


# ***FRM***



## 2009

# SPARE PART

# MANUAL

# &

# PRICE LIST

Prices shown are italian retail only

Prezzi validi solo per l'Italia

# INDEX

## CRANKSETS

CU2-M27 Integral - <b>CU2-M27 Integral BB-91</b>	Page 3
<b>CU2-M27 Integral BB-30</b>	Page 4
CU2-M18NS Integral - <b>CU2-M18NS Integral BB-91</b>	Page 5
<b>CU2-M18NS Integral BB-91</b>	Page 6

## FRONT HUBS

FL-R Team CA & HCB CA (Road)	Page 7
SP-R Team (Road)	Page 8
SP-R Team CA & HCB CA (Road)	Page 9
FL-M Team Disc (MTB)	Page 10
FL-M Team Lefty Disc (MTB)	Page 11
<b>SP-M Team Disc (MTB)</b>	Page 12
FL-R Pro (Road)& FL-M Pro (MTB)	Page 13
FL-M Pro Disc (MTB)	Page 14

## REAR HUBS

FL-R Team CA (Road)	
FL-R Team HCB CA (Road)	Page 15
SP-R Team (Road)	Page 16
SP-R Team CA (Road)	
SP-R Team CA HCB (Road)	Page 17
FL-M Team Disc (MTB)	Page 18
<b>SP-M Team Disc (MTB)</b>	Page 19
FL-R Pro (Road)	
FL-M Pro (MTB)	Page 20
FL-M Pro Disc (MTB)	Page 21

## QUICK RELEASE

SK-Pro	
SK-R Team	
SK-M Team	
SK-R Team SL	
SK-M Team SL	Page 22

## HEADSET

C-SET Pro	
<b>C-SET Team</b>	Page 23
I-SET Pro	
<b>I-SET Team (Integrated)</b>	Page 24

## STEMS

WEB-STEM CF	
<b>WEB-STEM CF Ti.</b>	
WEB-STEM 32	
<b>WEB-STEM 32 Ti.</b>	
LEFTY WEB-STEM CF	
<b>LEFTY WEB-STEM CF Ti.</b>	Page 25
HS-R BLACK HOLE	Page 26

## DISC BRAKES

DBR300 Caliper	
<b>DBR250 Caliper</b>	Page 27
DBR 300 Brake lever	
DBR 250 Brake lever	Page 28
DBR 300 Brake hose & fittings	
DBR 250 Brake hose and fittings	Page 29

## ROAD BRAKES

CL2	
CL2 Ti.	
CL2 Team	Page 30

## SEATPOSTS & SEATCOLLARS

ST-R21 Carbon Ti. 27,2x250	
<b>ST-R21 Carbon Ti. 31,6x250</b>	
ST-M21 Carbon Ti. 27,2x350	
<b>ST-M21 Carbon Ti. 31,6x400</b>	Page 31
ST-M10 27,2x350	
<b>ST-M10 30,9x350</b>	
<b>ST-M10 31,6x350</b>	
ST-M10 Ti. 27,2x350	
<b>ST-M10 Ti. 30,9x350</b>	
<b>ST-M10 Ti. 31,6x350</b>	
ST-M20 Carbon Ti 27,2x350	Page 32
ST-R & M Black Hole	Page 33

## SUSPENSION FORKS

AIR-WAY 85SSV Carbon	
<b>AIR-WAY 85SSV BiCarbon Ti.</b>	Page 34
AIR-WAY 90SSV Carbon	
<b>AIR-WAY 90SSV BiCarbon Ti.</b>	Page 35
AIR-WAY 110 SSV Carbon	
<b>AIR-WAY 110 SSV BiCarbon Ti.</b>	Page 36

## SUSPENSION FRAMES

12HP	Page 37
10HP Pro & 10HP Team	Page 38

Note: modified from Spare Part Manual dated March 2008

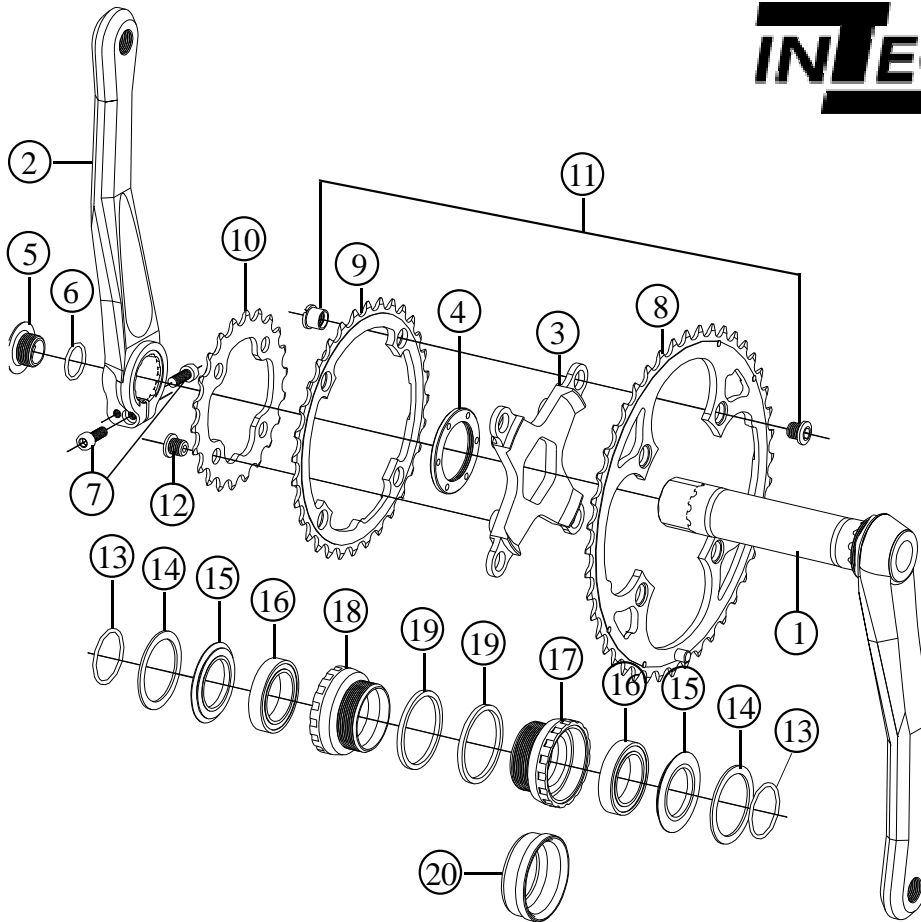
# FRM

Front Crankset for MTB

## CU2-M27 Integral - CU2 M27 Integral BB-91

2009 Prices for Italian consumers only

# INTEGRAL DRIVE



Item no.	Code	DESCRIPTION	Price €
1	CU23R	Integral Right Arm with Axle 170-172,5-175 mm - Black	168,00
2	CU24L	Clamp Type Left Arm 170-172,5-175 mm - Black	115,00
3	CU25M	4 Arm Spider for triple rings (110/64 mm B.C.D.) Black or Gold	77,00
4	CU006	Spider Lock Ring	5,30
5	CU18	Bolt for Play Adjustment. Black	3,20
5	CU18R	Bolt for Play Adjustment. Red with "Titanium Bolts" laser etching	4,50
6	OR2056	O-Ring 2056 (I.D. 14 x 1,78 mm)	0,15
7	TCC515/512S	1 Allen Bolt M5x15 and 1 Allen bolt M5x12 / Steel	0,15
7	TCC515TI	Allen Bolt M5x15 / Titanium - Gold Plated	5,60
7	TCC512TI	Allen bolt M5x12 / Titanium - Gold Plated	5,10
8	CU1844O	Chain Ring FRM Pro 44T (104 mm B.C.D.)	53,50
9	CU1832M	Chain Ring FRM Pro 32T (104 mm B.C.D.)	31,00
10	CU2122I	Chain Ring FRM Pro 22T (64 mm B.C.D.)	16,00
11	CU004	Chainring Fixing Bolt & Nut (each)	3,50
10	CU004G	Chainring Fixing Bolt & Nut Gold (each)	3,80
12	CU005	Inner Gear Fixing Bolt Unit (4 pcs)	2,2
13	OR2093	O-Ring 2093 (I.D. 23,52 x 1,78 mm)	0,15
14	CU19BA	Rubber Seal	0,50
15	CU19B	Dust Shield for Rubber Seal (plastic)	2,10
16	BB37257RS	Bearing 6805 2RS 37x25x7 mm (NTN Red Seal with double seal)	16,80
17	CU20BL	Left hand Cup (BC 1,37x24T) English Thread / Shell Width 68 mm	15,00
18	CU20BR	Right hand Cup (BC 1,37x24T) English Thread / Shell Width 68 mm	15,00
19	CU22	Spacer 2,5 mm thick. DO NOT USE WITH 73 mm BB SHELLS	1,00
20	BB-91SPEC	BB-91 kit of spares to fit 2009 Specialised frames. Includes 2 x (20-16-15-14-13)	67,20
	CU26	Tool for Bottom Bracket Cups	18,00

Note: modified from Spare Part Manual dated March 2008

Specifications are subject to change without notice

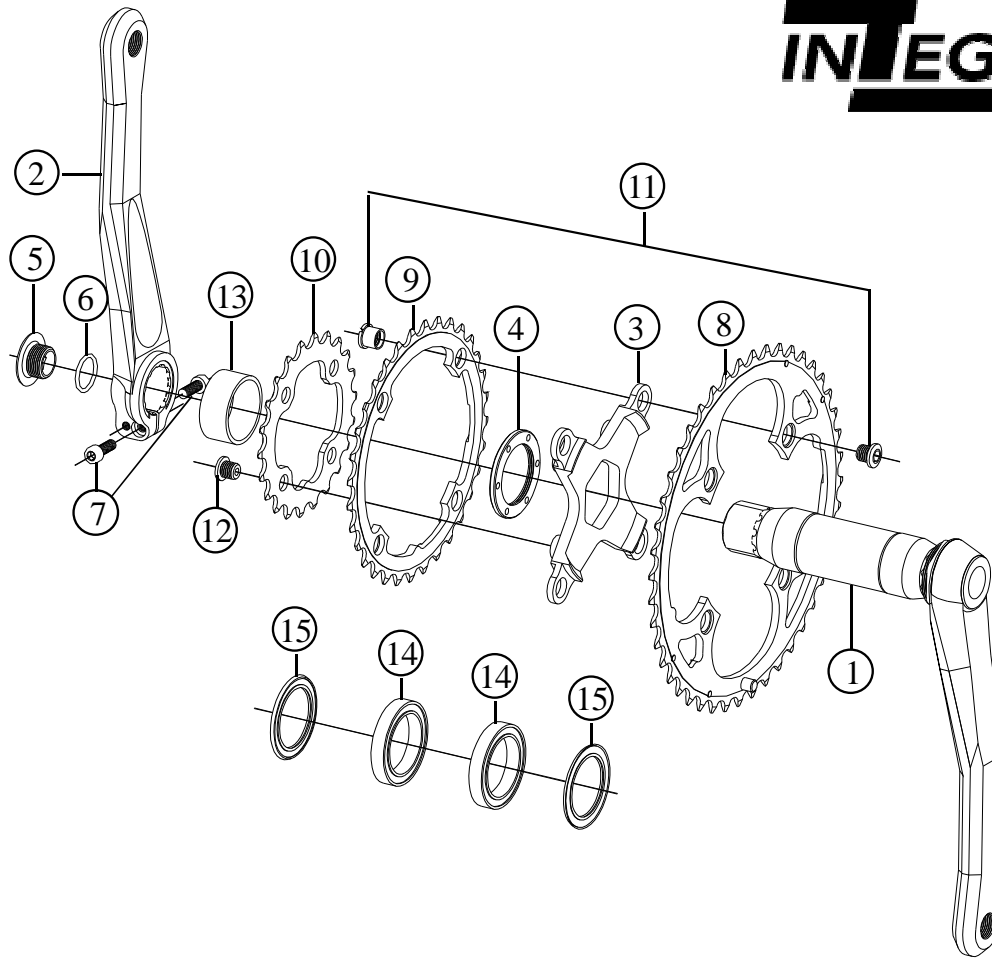
# FRM

Front Crankset for MTB

## CU2-M27NS Integral BB-30

2009 Prices for Italian consumers only

**INTEGRAL** DRIVE



Item no.	Code	DESCRIPTION	Price €
1	CU23RBB30	Integral Right Arm with BB-30 Axle 170-172,5-175 mm - Black	175,00
2	CU24L	Clamp Type Left Arm 170-172,5-175 mm - Black	115,00
3	CU25M	4 Arm Spider for triple rings (110/64 mm B.C.D.) Black or Gold	77,00
4	CU006	Spider Lock Ring	5,30
5	CU18	Bolt for Play Adjustment. Black	3,20
5	CU18R	Bolt for Play Adjustment. Red with "Titanium Bolts" laser etching	4,50
6	OR2056	O-Ring 2056 (I.D. 14 x 1,78 mm)	0,15
7	TCC515/512S	1 Allen Bolt M5x15 and 1 Allen bolt M5x12 / Steel	0,15
7	TCC515TI	Allen Bolt M5x15 / Titanium - Gold Plated	5,60
7	TCC512TI	Allen bolt M5x12 / Titanium - Gold Plated	5,10
8	CU18440	Chain Ring FRM Pro 44T (104 mm B.C.D.)	53,50
9	CU1832M	Chain Ring FRM Pro 32T (104 mm B.C.D.)	31,00
10	CU2122I	Chain Ring FRM Pro 22T (64 mm B.C.D.)	16,00
11	CU004	Chainring Fixing Bolt & Nut (each)	3,50
10	CU004G	Chainring Fixing Bolt & Nut Gold (each)	3,80
12	CU005	Inner Gear Fixing Bolt Unit (4 pcs)	2,2
13	BB30SPA15	Plastic Spacer 15mm long for 68mm shell	3,00
13	BB30SPA12	Plastic Spacer 12,5mm long for 73mm shell	3,00
14	BB42307RS	Bearing 61806 2RS 42x30x7mm Enduro LLB ABEC5	10,90
15	SEMR3042	Enduro Lip Seal 42x30x1,6mm	3,4
	CU26	Tool for Bottom Bracket Cups	18,00

Specifications are subject to change without notice

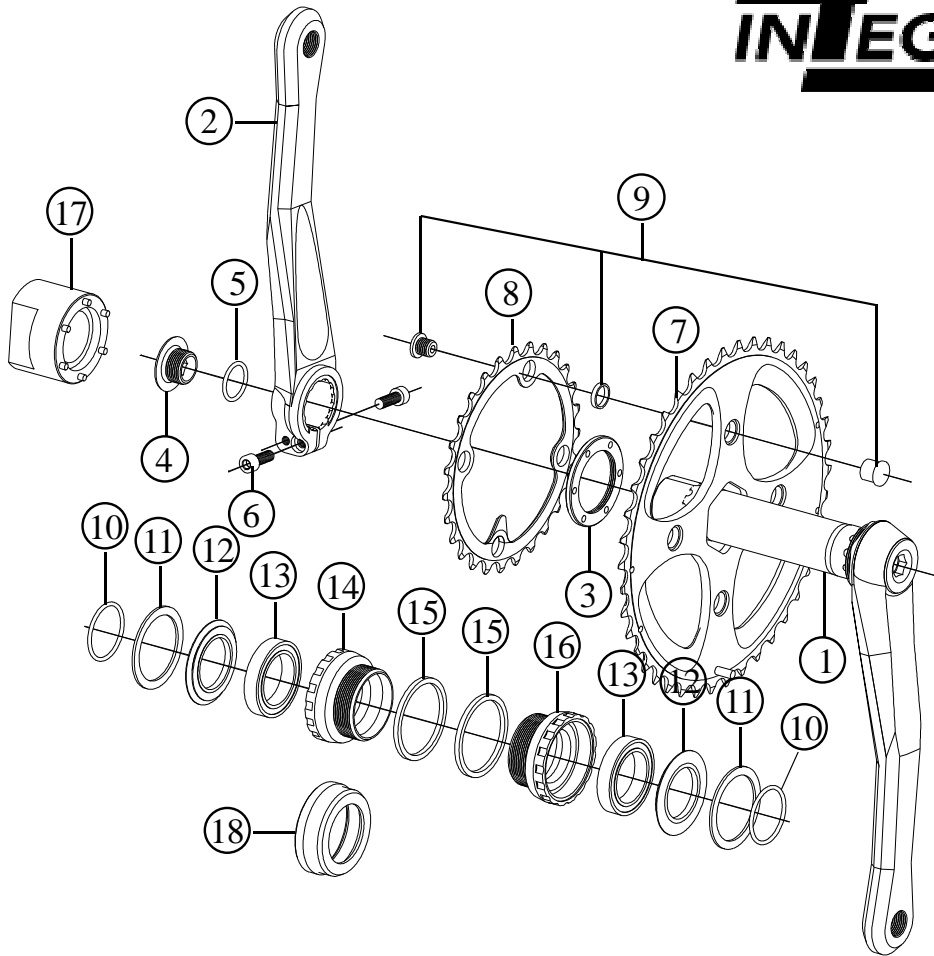
# FRM

Front Crankset for MTB

## CU2-M18NS Integral - CU2-M18NS Integral BB-91

2009 Prices for Italian consumers only

# INTEGRAL DRIVE



Item no.	Code	DESCRIPTION	Price €
1	CU23R	Integral Right Arm with Axle 170-172,5-175 mm – Black	168,00
2	CU24L	Clamp Type Left Arm 170-172,5-175 mm - Black	115,00
3	CU006	Lock Ring	5,30
4	CU18	Bolt for Play Adjustment	3,20
4	CU18R	Bolt for Play Adjustment. Red with "Titanium Bolts" laser etching	4,50
5	OR2056	O-Ring 2056 ( I.D. 14 x 1,78 mm)	0,15
6	TCC515/510S	1 Allen Bolt M5x15 and 1 Allen bolt M5x10 / Steel	0,15
6	TCC515TI	Allen Bolt M5x15 / Titanium - Gold Plated	5,60
6	TCC512TI	Allen bolt M5x12 / Titanium - Gold Plated	5,10
7	CU42NS	Chain Ring FRM NS 42T	73,70
7	CU40NS	Chain Ring FRM NS 40T	73,70
8	CU27NS	Chain Ring FRM Pro 27T (compatible with 42NS ring only)	33,80
9	CUNSF	Kit NS Chainring Bolt, Nut and Spacer (4 sets)	14,50
10	OR2093	O-Ring 2093 (I.D. 23,52 x 1,78 mm)	0,15
11	CU19BA	Rubber Seal	0,50
12	CU19B	Dust Shield for Rubber Seal (plastic)	2,10
13	BB37257RS	Bearing 6805 2RS 37x25x7 mm (NTN Red Seal with double seal)	16,80
14	CU20BR	Right hand Cup (BC 1,37x24T) English Thread / Shell Width 68 mm	15,00
15	CU22	Spacer 2,5 mm thick. DO NOT USE WITH 73 mm BB SHELLS	1,00
16	CU20BL	Left hand Cup (BC 1,37x24T) English Thread / Shell Width 68 mm	15,00
17	NSTOOL25	Tool to disassemble the Lock Ring with 25mm axle dia.	18,20
18	BB-91SPEC	BB-91 kit of spares to fit 2009 Specialised frames. Includes 2 x (18-13-12-11-10)	67,20

Note: modified from Spare Part Manual dated March 2008

Specifications are subject to change without notice

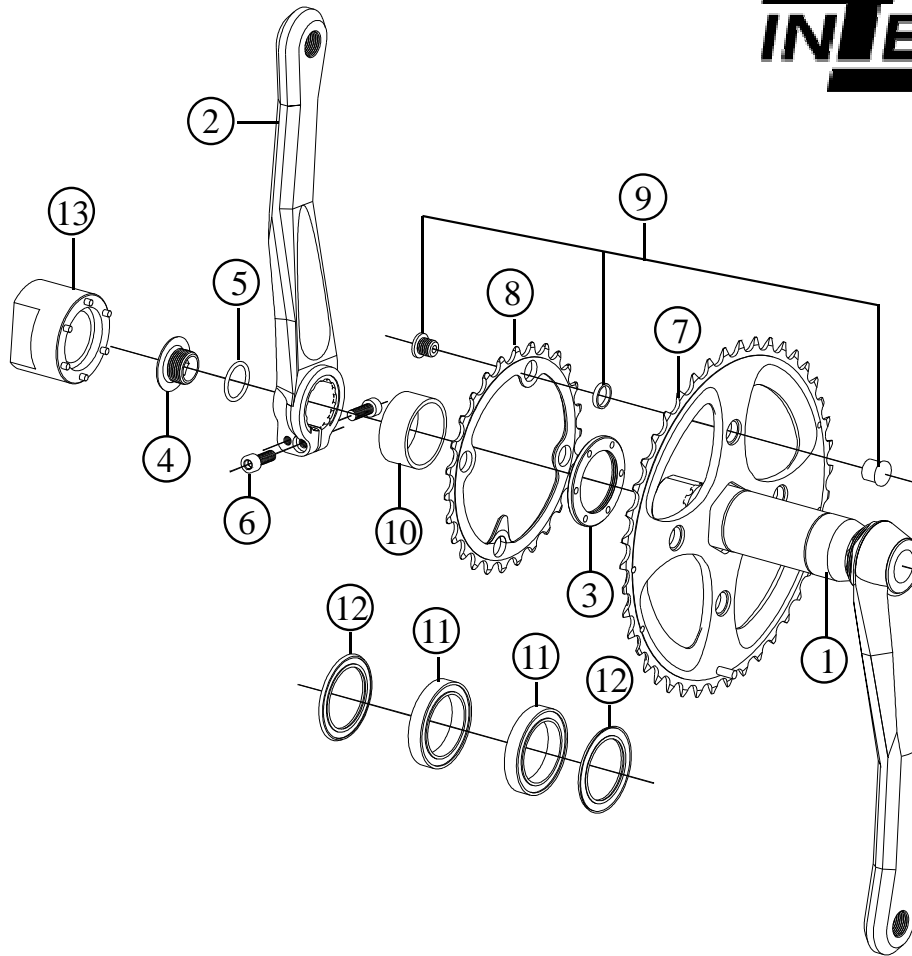
# FRM

Front Crankset for MTB

## CU2-M18NS Integral BB-30

2009 Prices for Italian consumers only

**INTEGRAL** DRIVE



Item no.	Code	DESCRIPTION	Price €
1	CU23R	Integral Right Arm with Axle 170-172,5-175 mm – Black	168,00
2	CU24L	Clamp Type Left Arm 170-172,5-175 mm - Black	115,00
3	CU006	Lock Ring	5,30
4	CU18	Bolt for Play Adjustment	3,20
4	CU18R	Bolt for Play Adjustment. Red with “Titanium Bolts” laser etching	4,50
5	OR2056	O-Ring 2056 ( I.D. 14 x 1,78 mm)	0,15
6	TCC515/510S	1 Allen Bolt M5x15 and 1 Allen bolt M5x10 / Steel	0,15
6	TCC515TI	Allen Bolt M5x15 / Titanium - Gold Plated	5,60
6	TCC512TI	Allen bolt M5x12 / Titanium - Gold Plated	5,10
7	CU42NS	Chain Ring FRM NS 42T	73,70
7	CU40NS	Chain Ring FRM NS 40T	73,70
8	CU27NS	Chain Ring FRM Pro 27T (compatible with 42NS ring only)	33,80
9	CUNSF	Kit NS Chainring Bolt, Nut and Spacer (4 sets)	14,50
10	BB30SPA15	Plastic Spacer 15mm long for 68mm shell	3,00
10	BB30SPA12	Plastic Spacer 12,5mm long for 73mm shell	3,00
11	BB42307RS	Bearing 61806 2RS 42x30x7 mm Enduro LLB ABEC5	10,90
12	SEMR3042	Enduro lip seal 42x30x1,6mm	3,4
13	NSTOOL30	Tool to disassemble the Lock Ring with 30mm axle dia.	18,20

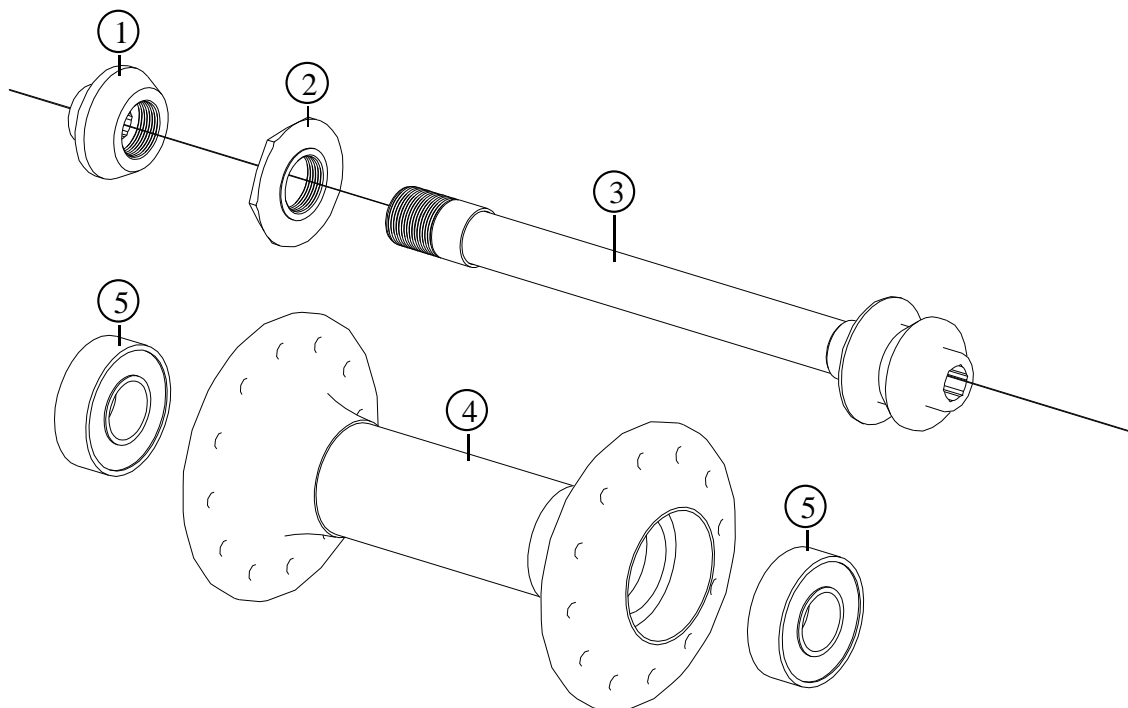
Specifications are subject to change without notice

# FRM

Front Hub for Road Only

## FL-R Team CA - FL-R Team CA HCB

2009 Prices for Italian consumers only



ALSO SUPPLIED ON WHEELSET: FL-R21 Aerolite, FL-R24 Aerolite Carbon Zipp and HCB versions

Item no.	Code	DESCRIPTION	Price €
1	FH003CA	Lock Nut for carbon fibre axle / Light alloy	3,60
2	FH02CCA	Inner Nut for carbon fibre axle / Light alloy	3,10
3	FH04CCA	Carbon Fibre Axle with bonded light alloy ends	23,00
4	FH06B20G	Hub Body 20 h: Alloy Flanges (Gold)+Carbon Fibre Centre	73,50
4	FH07B24G	Hub Body 24 h: Alloy Flanges (Gold)+Carbon Fibre Centre	73,50
4	FH07B28G	Hub Body 28 h: Alloy Flanges (Gold)+Carbon Fibre Centre	73,50
4	FH07B32G	Hub Body 32 h: Alloy Flanges (Gold)+Carbon Fibre Centre	73,50
4	FH06B20S	Hub Body 20 h: Alloy Flanges (Silver)+Carbon Fibre Cent.	73,50
4	FH07B24S	Hub Body 24 h: Alloy Flanges (Silver)+Carbon Fibre Cent.	73,50
4	FH07B28S	Hub Body 28 h: Alloy Flanges (Silver)+Carbon Fibre Cent.	73,50
4	FH07B32S	Hub Body 32 h: Alloy Flanges (Silver)+Carbon Fibre Cent.	73,50
5	HB2097	Bearing Enduro 699 20x9x6mm 2RS	4,40
5	HB2097CH	Ceramic Bearing Enduro CH699 LLB 20x9x6mm 2RS ( HCB)	18,50

Specifications are subject to change without notice













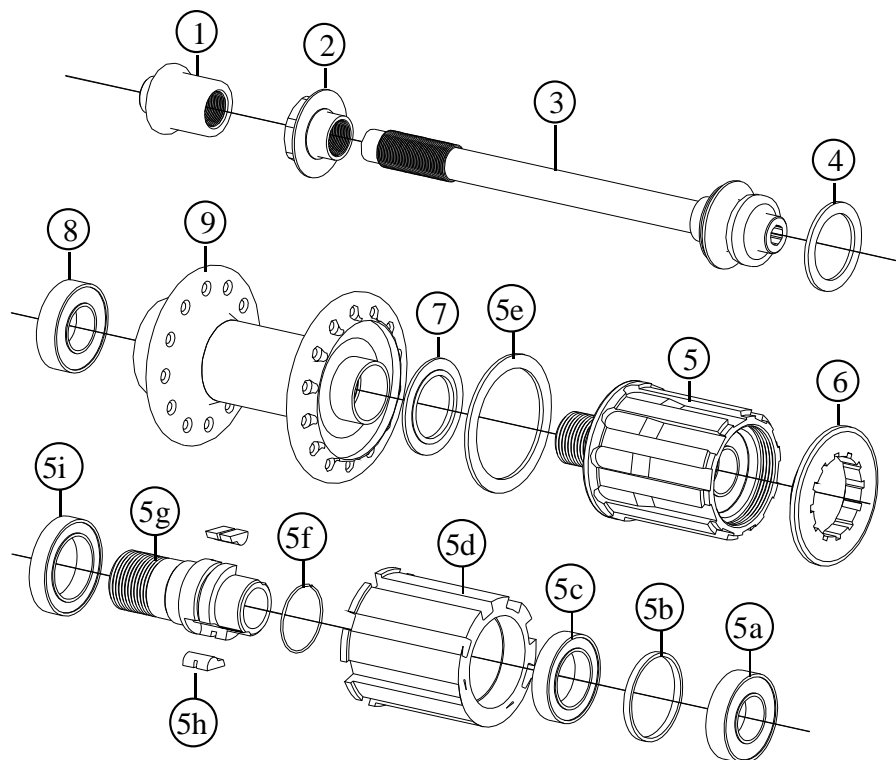


# FRM

Rear Hub for Road Only

## FL-R Team CA - FL-R Team CA HCB

2009 Prices for Italian consumers only



ALSO SUPPLIED ON WHEELSET FL-R21 Aerolite & HCB, FL-R24 Aerolite Carbon Zipp & HCB

Item no.	Code	DESCRIPTION	Price €
1	RH003CA	Lock Nut for carbon fibre axle / Light alloy	3,70
2	RH02CCA	Inner Nut for carbon fibre axle / Light alloy	3,20
3	FH04CCA	Carbon Fibre Axle with bonded Ends (Stainless Steel Thread)	28,50
4	3FH02DS	Rubber Seal: 24x17x1	0,30
5	RH4SD152TDSS	Freehub Body Ass.: SH Compat. Titanium Bolt M15x2 starts. New rubber Seal	115,50
5	RH4SD152TC	Freehub Body Ass.: Campy Compat. Titanium Bolt M15 x 2 starts.	115,50
5e	RHSDRS	Freewheel Rubber seal (only for Shimano compatible outer shells)	0,50
6	RHLRSH11	Lock-ring in light alloy for cog-set – Shimano 11T	7,20
6	RHLRSH12	Lock-ring in light alloy for cog-set – Shimano 12T	7,20
6	RHLRCA11	Lock-ring in light alloy for cog-set – Campy 11T	7,20
6	RHLRCA12	Lock-ring in light alloy for cog-set – Campy 12T	7,20
8 - 5a	HB24126	Outer Bearing 24x12x6 mm 6901 2RS	7,50
5b	RH04SL1	Freewheel Body Bearing Spacer / Light Alloy	0,60
5c	HB24155	Freewheel Body Middle Bearing 24 x 15 x 5 mm 6802 2RS	8,50
5d	RH04SLSDSS	Freehub Shell Shimano Compat. Light Alloy. New rubber seal	31,20
5d	RH04RSC	Freehub Shell Campy Compat. Light Alloy	31,20
5f	RHLS07	Pawls Spring 0,7 mm	0,50
5g	RHFWB152T	Freewheel Body Fixing Bolt M15 x 2 starts / Titanium	39,50
5h	RH04LP	Freewheel pawl /High Tensile Steel (Silicium 52)	10,0 pc
5i	HB26175	Freewheel Body Inner Bearing 26x17x5 mm 6803 2RS	8,00
7	RH04SL3B	Freewheel Body Washer / Hardened Steel. 2,7mm thick	10,00
9	RH05G24S	Hub Body M15 24 h: Light Alloy Flanges / Carbon Fibre – Silver	126,00
9	RH05G28S	Hub Body M15 28 h: Light Alloy Flanges / Carbon Fibre – Silver	126,00
9	RH05G32S	Hub Body M15 32 h: Light Alloy Flanges / Carbon Fibre – Silver	126,00
9	RH05G24G	Hub Body M15 24 h: Light Alloy Flanges / Carbon Fibre – Gold	126,00
9	RH05G28G	Hub Body M15 28 h: Light Alloy Flanges / Carbon Fibre – Gold	126,00
9	RH05G32G	Hub Body M15 32 h: Light Alloy Flanges / Carbon Fibre – Gold	126,00

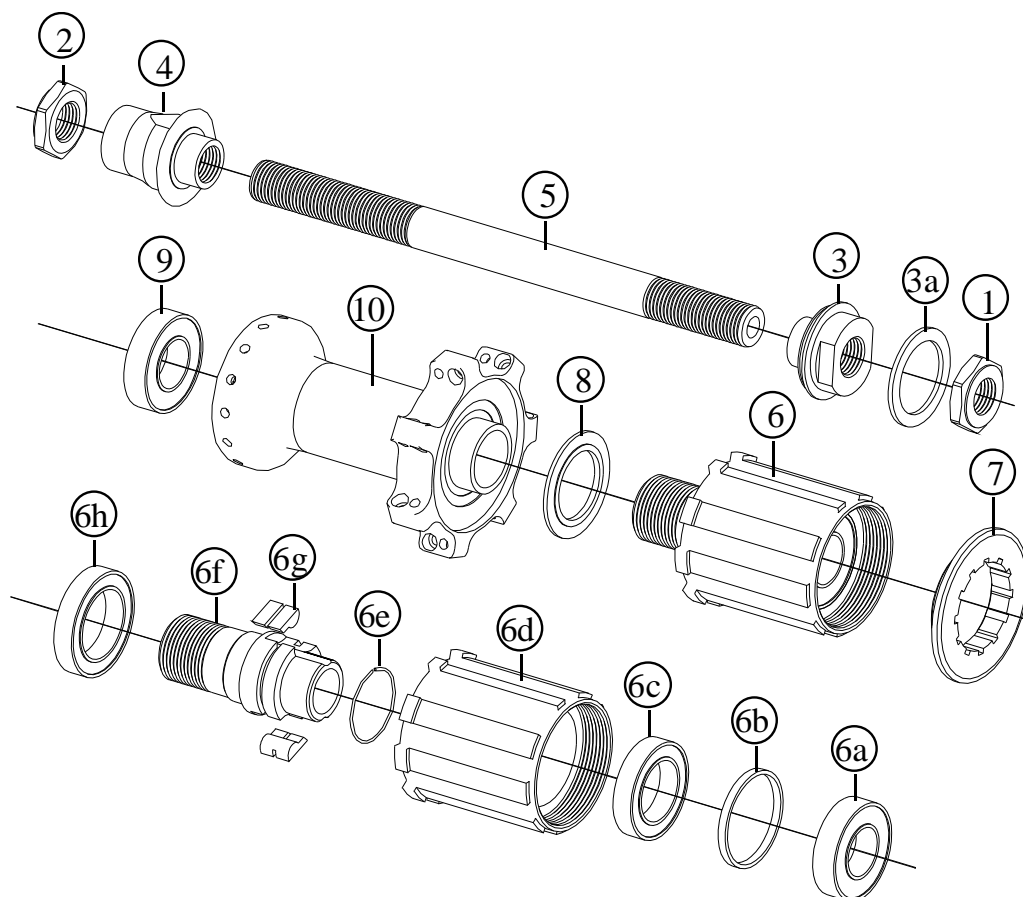
Specifications are subject to change without notice

# FRM

Rear Hub for Road Only

## SP-R TEAM

2009 Prices for Italian consumers only



### SUPPLIED AS WHEELSETS: SP-R21

Item no.	Code	DESCRIPTION	Price €
1	RH01A	Right Hand Lock Nut: M10 x 17 mm / 4,5 mm thick / Steel	2,00
2	RH01B	Left hand Lock Nut: M10x17 mm / 4,5 mm / Light Alloy	2,10
3	RH02CR	Right Hand Inner Nut: M10 x 16 mm / Light Alloy	3,15
4	RH02DL	Left Hand Inner Nut: M10 x 16 mm / Light Alloy	3,70
5	RH03AA	Hub Axle 140,6 mm / Dia. 10 mm / Light alloy	19,50
6	RH4SD151TS	Freehub Body Ass.: Shimano Compat. Titanium Bolt M15x1 (1 start)	115,50
6	RH4SD151TC	Freehub Body Ass.: Campy Compat. Titanium Bolt M15x1 (1 start)	115,50
7	RHLRSH11	Lock-ring in light alloy for cog-set – Shimano 11T	7,20
7	RHLRSH12	Lock-ring in light alloy for cog-set – Shimano 12T	7,20
7	RHLRCA11	Lock-ring in light alloy for cog-set – Campy 11T	7,20
7	RHLRCA12	Lock-ring in light alloy for cog-set – Campy 12T	7,20
6a	HB24126	Freewheel Body Outer Bearing 24x12x6 mm 6901 2RS	7,50
6b	RH04SL1	Freewheel Body Bearing Spacer / Light Alloy	0,60
6c	HB24155	Freewheel Body Middle Bearing 24 x 15 x 5 mm 6802 2RS	8,50
6d	RH04SLS	Freehub Shell Shimano Compat. Light Alloy	31,20
6d	RH04SLC	Freehub Shell Campy Compat. Light Alloy	31,20
6e	RHLS07	Lips spring 0,7 mm	0,50
6f	RHFWB151T	Freewheel Body Fixing Bolt M15x 1 start / Titanium	39,50
6g	RH04LP	Freewheel Pawls /High Tensile Steel (Silicium 52)	10,0 pc
6h	HB26175	Freewheel Body Inner Bearing 26 x 17 x 5 mm 6803 2RS	8,00
8	RH04SL3B	Freewheel Body Washer / Hardened Steel. 2,7mm thick	10,00
9	HB24126	Bearing 24x12x6 mm 6901 2RS	7,50
10	RH05H28G	Hub Body M15 28 h: Gold anodised Flanges / Carbon Fibre	126,00
10	RH05H28S	Hub Body M15 28 h: Silver anodised Flanges / Carbon Fibre	126,00

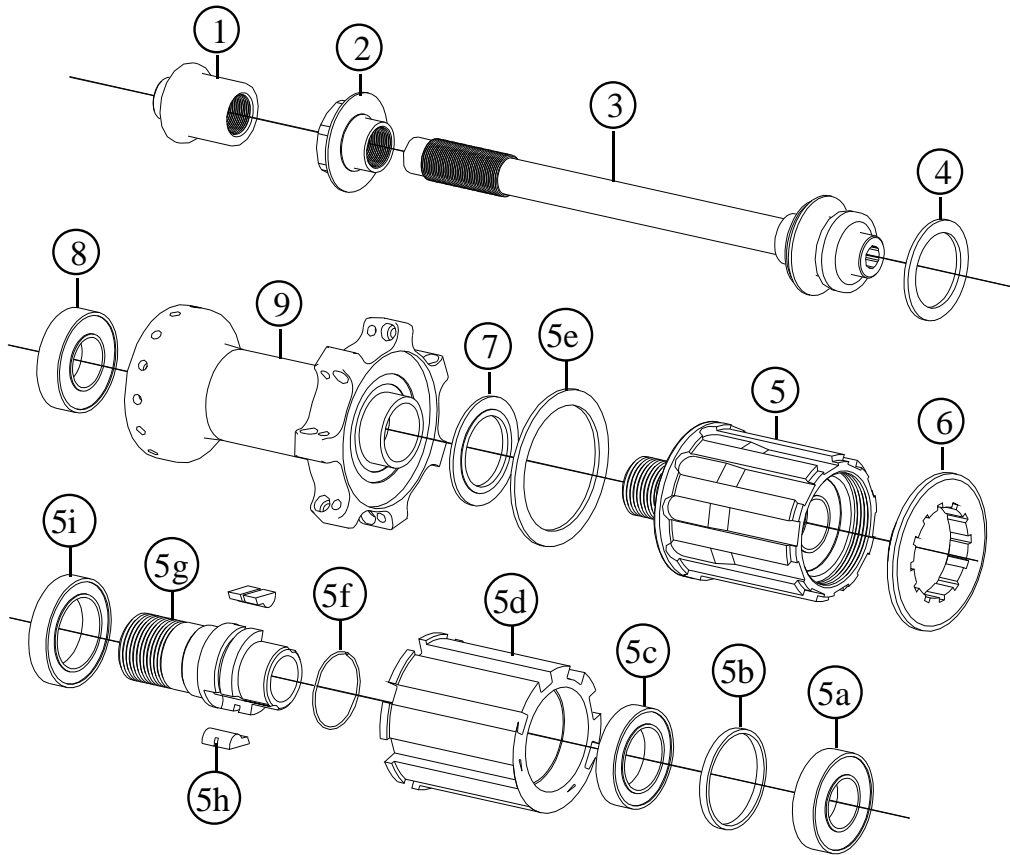
Specifications are subject to change without notice

# FRM

Rear Hub for Road Only

## SP-R Team CA - SP-R Team CA HCB

2009 Prices for Italian consumers only



ALSO SUPPLIED ON WHEELSET SP-R21 Aerolite & SP-R21 Aerolite HCB

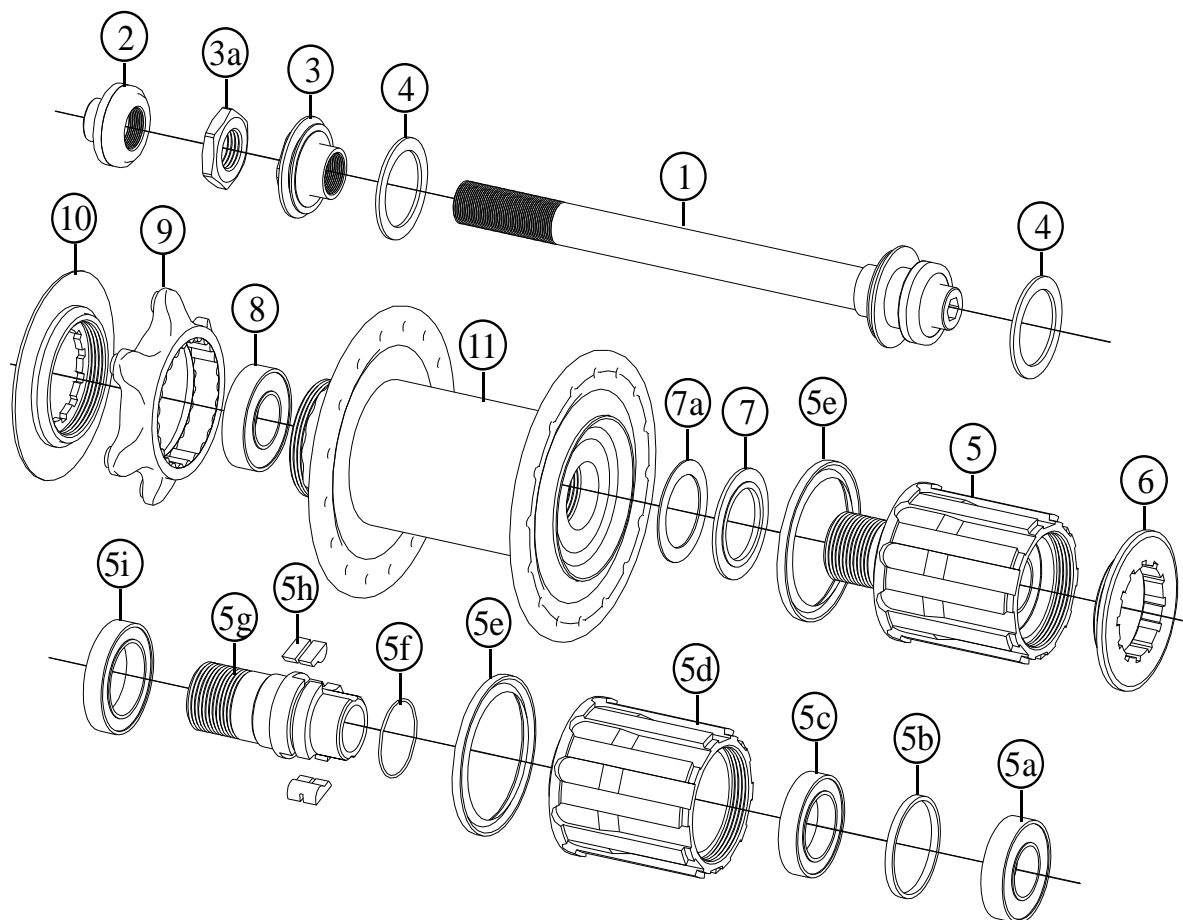
Item no.	Code	DESCRIPTION	Price €
1	RH003CA	Lock Nut for carbon fibre axle / Light alloy	3,70
2	RH02CCA	Inner Nut for carbon fibre axle / Light alloy	3,20
3	FH04CCA	Carbon Fibre Axle with bonded Ends (Stainless Steel Thread)	28,50
4	3FH02DS	Rubber Seal: 24x17x1	0,30
5	RH4SD152TDSS	Freehub Body Ass.: SH Compat. Titanium Bolt M15 x 1 start. New rubber Seal	115,50
5	RH4SD152TC	Freehub Body Ass.: Campy Compat. Titanium Bolt M15 x 1 starts.	115,50
5e	RHSDRS	Freewheel Rubber seal (only for Shimano compatible outer shells)	0,50
6	RHLRSH11	Lock-ring in light alloy for cog-set – Shimano 11T	7,20
6	RHLRSH12	Lock-ring in light alloy for cog-set – Shimano 12T	7,20
6	RHLRCA11	Lock-ring in light alloy for cog-set – Campy 11T	7,20
6	RHLRCA12	Lock-ring in light alloy for cog-set – Campy 12T	7,20
8 - 5a	HB24126	Outer Bearing 24x12x6 mm 6901 2RS	7,50
8 - 5a	HB24126CH	Outer Ceramic Bearing 24x12x6mm Enduro CH6901 2RS (HCB)	17,80
5b	RH04SL1	Freewheel Body Bearing Spacer / Light Alloy	0,60
5c	HB24155	Freewheel Body Middle Bearing 24x15x5 mm 6802 2RS	8,50
5d	RH04SLSDSS	Freehub Shell Shimano Compat. Light Alloy. New rubber seal	31,20
5d	RH04RSC	Freehub Shell Campy Compat. Light Alloy	31,20
5f	RHLS07	Pawls Spring 0,7 mm	0,50
5g	RHFWB152T	Freewheel Body Fixing Bolt M15 x 1 start / Titanium	39,50
5h	RH04LP	Freewheel pawl /High Tensile Steel (Silicium 52)	10,0 pc
5i	HB26175	Freewheel Body Inner Bearing 26x17x5 mm 6803 2RS	8,00
7	RH04SL3B	Freewheel Body Washer / Hardened Steel. 1,5mm thick	10,00
9	RH05H28G	Hub Body M15 28 h: Gold anodised Flanges / Carbon Fibre	126,00
9	RH05H28S	Hub Body M15 28 h: Silver anodised Flanges / Carbon Fibre	126,00

Specifications are subject to change without notice

# FRM

## Rear Hub for MTB FL-M Team Disc

**2009 Prices for Italian consumers only**



**SUPPLIED ON WHEELSETS: FL-M21 XMD, FL-M21 XMD Aerolite, Lefty FL-M21 XMD, Lefty FL-M21 XMD Aerolite**

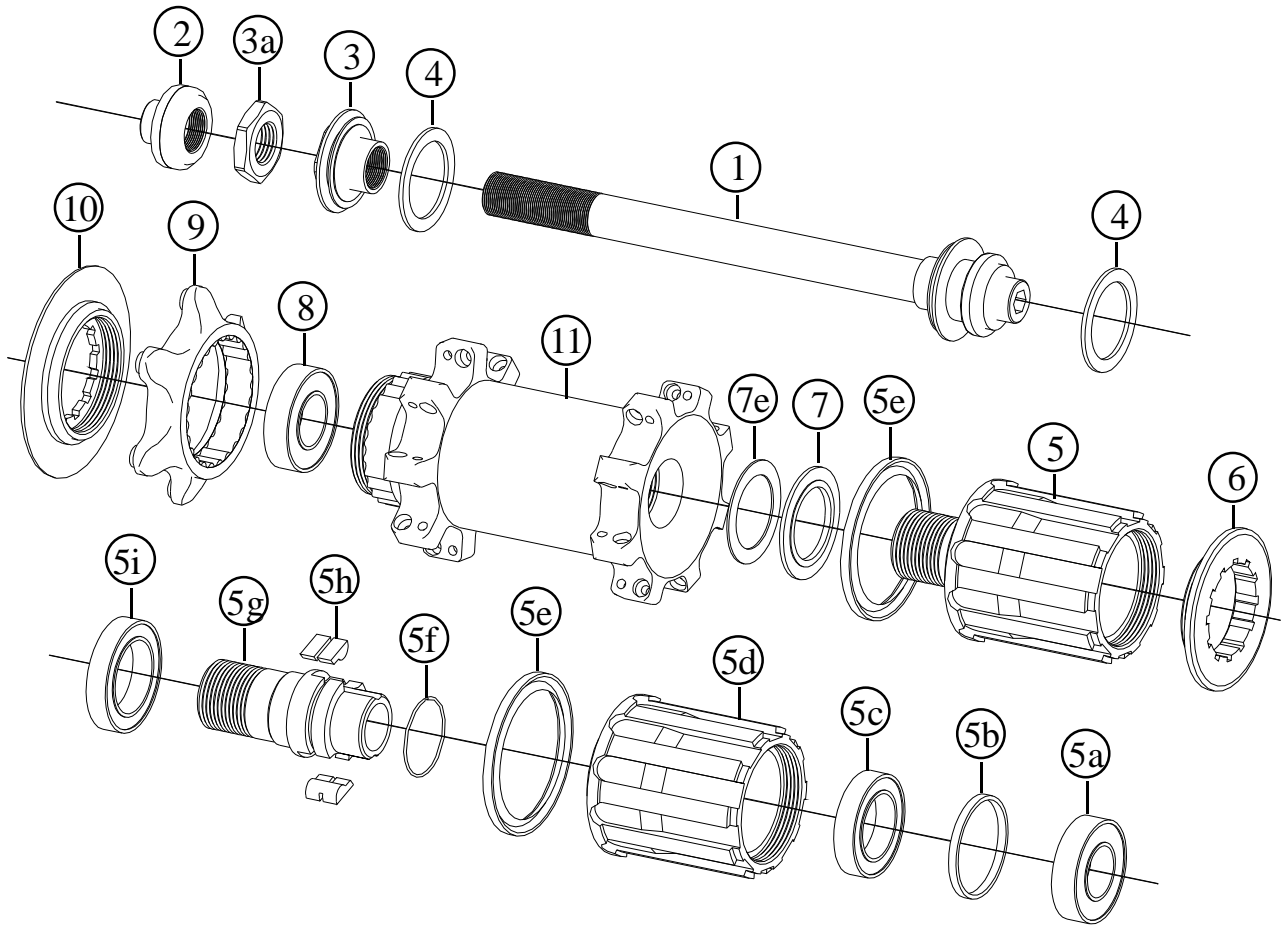
Item no.	Code	DESCRIPTION	Price €
1	RHA01B	Hub Axle assembled. Lock-nut 135 mm / Light alloy	24,20
2	RHA01A	Axle Cup End for 5mm Allen Key / Light Alloy	3,70
3	RHA01C2	Left Hand Adjustable Inner Nut / Light Alloy & Lock-Nut (3a)	5,30
4	3FH02DS	Rubber Seal: 24x17x1	0,30
5	RH4SD162TLSS	Freehub Body Ass. for Lip Seal. Steel Bolt M16x2 starts. Red Anodised	107,60
6	RHLRSH11	Lock-ring in light alloy for cog-set -Shimano 11T (series)	7,20
6	RHLRSH12	Lock-ring in light alloy for cog-set -Shimano 12T (optional)	7,20
8 - 5a	HB24126	Freewheel Body Outer Bearing 24x12x6 mm 6901 2RS	7,50
5b	RH04SL1	Freewheel Body Bearing Spacer / Light Alloy	0,60
5c	HB24155	Freewheel Body Middle Bearing 24x15x5 mm 6802 2RS	8,50
5d	RH04SLSLSS	Freewheel Shell for Lip Seal / Light Alloy / Red anodised	30,50
5e	RH04FWLS	Rubber Lip Seal for Freewheel Body (Enduro 37,5x30x2,5mm)	2,00
5f	RHLS07	Pawls Spring 0,7 mm	0,50
5g	RHFWB162S	Freewheel Body Fixing Bolt M16 x 2 starts / HT Steel	35,40
5h	RH04LP	Freewheel pawls /High Tensile Steel (Silicium 52)	10,0 pc
5i	HB26175	Freewheel Body Inner Bearing 26x17x5 mm 6803 2RS	8,00
7	RH04SL3A	Freewheel Body Washer / High Tens. Steel. 2,7mm thick	10,00
7a	RH04SL3B	Steel washer 24x17x0.5mm	0,5
9	DH-DF3	Disc Flange without bolts for 6 holes Internat. Std. rotors	26,00
10	DH-LR2	Lock Ring for Disc Flange DH-DF3	11,00
11	FLMTDR28	Hub Body 28 holes / Carbon fibre-Light Alloy - Gold Anodised	126,00
11	FLMTDR32	Hub Body 32 holes / Carbon Fibre-Light Alloy - Gold Anodised	126,00

Specifications are subject to change without notice

# FRM

## Rear Hub for MTB SP-M Team Disc

2009 Prices for Italian consumers only



SUPPLIED ONLY ON WHEELSETS: SP-M21 XMD Aerolite,

Item no.	Code	DESCRIPTION	Price €
1	RHA01BR	Hub Axle assembled. Lock-nut 135mm / Light alloy	24,20
2	RHA01A	Axle Cup End for 5mm Allen Key / Light Alloy	3,70
3	RHA01C2	Left Hand Adjustable Inner Nut / Light Alloy & Lock-Nut (3a)	5,30
4	3FH02DS	Rubber Seal: 24x17x1	0,30
5	RH4SD173TLSS	Freehub Body Ass. for Lip Seal. Steel Bolt M17x3 starts. Red Anodised	107,60
6	RHLRSH11	Lock-ring in light alloy for cog-set -Shimano 11T (series)	7,20
6	RHLRSH12	Lock-ring in light alloy for cog-set -Shimano 12T (optional)	7,20
8 - 5a	HB24126	Freewheel Body Outer Bearing 24x12x6 mm 6901 2RS	7,50
5b	RH04SL1	Freewheel Body Bearing Spacer / Light Alloy	0,60
5c	HB24155	Freewheel Body Middle Bearing 24x15x5 mm 6802 2RS	8,50
5d	RH04SLSLSS	Freewheel Shell for Lip Seal / Light Alloy / Red anodised	30,50
5e	RH04FWLS	Rubber Lip Seal for Freewheel Body (Enduro 37,5x30x2,5mm)	2,00
5f	RHLS07	Pawls Spring 0,7 mm	0,50
5g	RHFWB173S	Freewheel Body Fixing Bolt M17 x 3 starts / HT Steel	35,40
5h	RH04LP	Freewheel pawls /High Tensile Steel (Silicium 52)	10,0 pc
5i	HB26175	Freewheel Body Inner Bearing 26x17x5 mm 6803 2RS	8,00
7	RH04SL3A	Freewheel Body Washer / High Tens. Steel. 2,7mm thick	10,00
7a	RH04SL3B	Steel washer 24x17x0.5mm	0,5
9	DH-DF3	Disc Flange without bolts for 6 holes Internat. Std. rotors	26,00
10	DH-LR2	Lock Ring for Disc Flange DH-DF3	11,00
11	FLMTDR32	SP Hub Body 32 holes. Carbon Fibre-Light Alloy - Red Anodised	142,00

Note: modified from Spare Part Manual dated March 2008

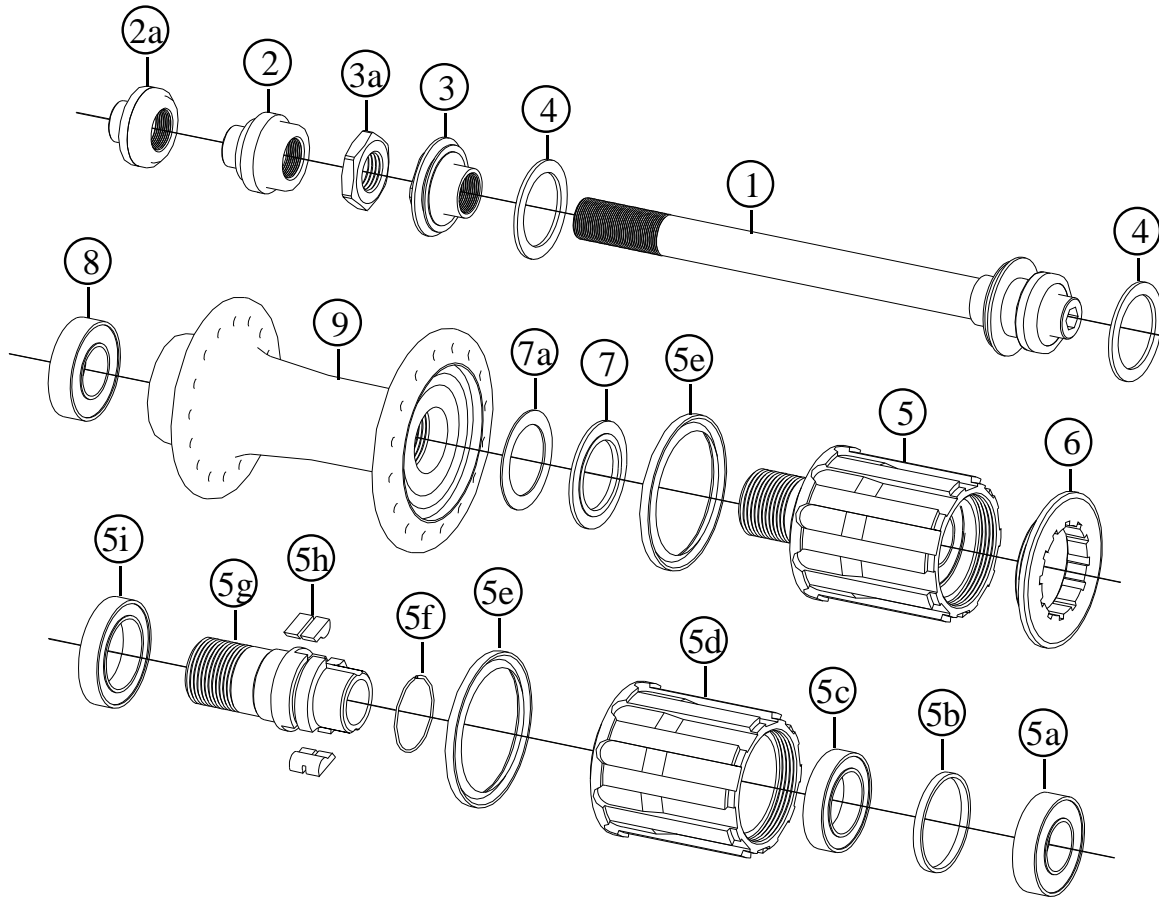
Specifications are subject to change without notice

# FRM

Rear Hub for Road

## FL-R Pro - FL-M Pro

2009 Prices for Italian consumers only



ALSO SUPPLIED ON WHEELSETS: FL-R12, FL-M12 ZTR

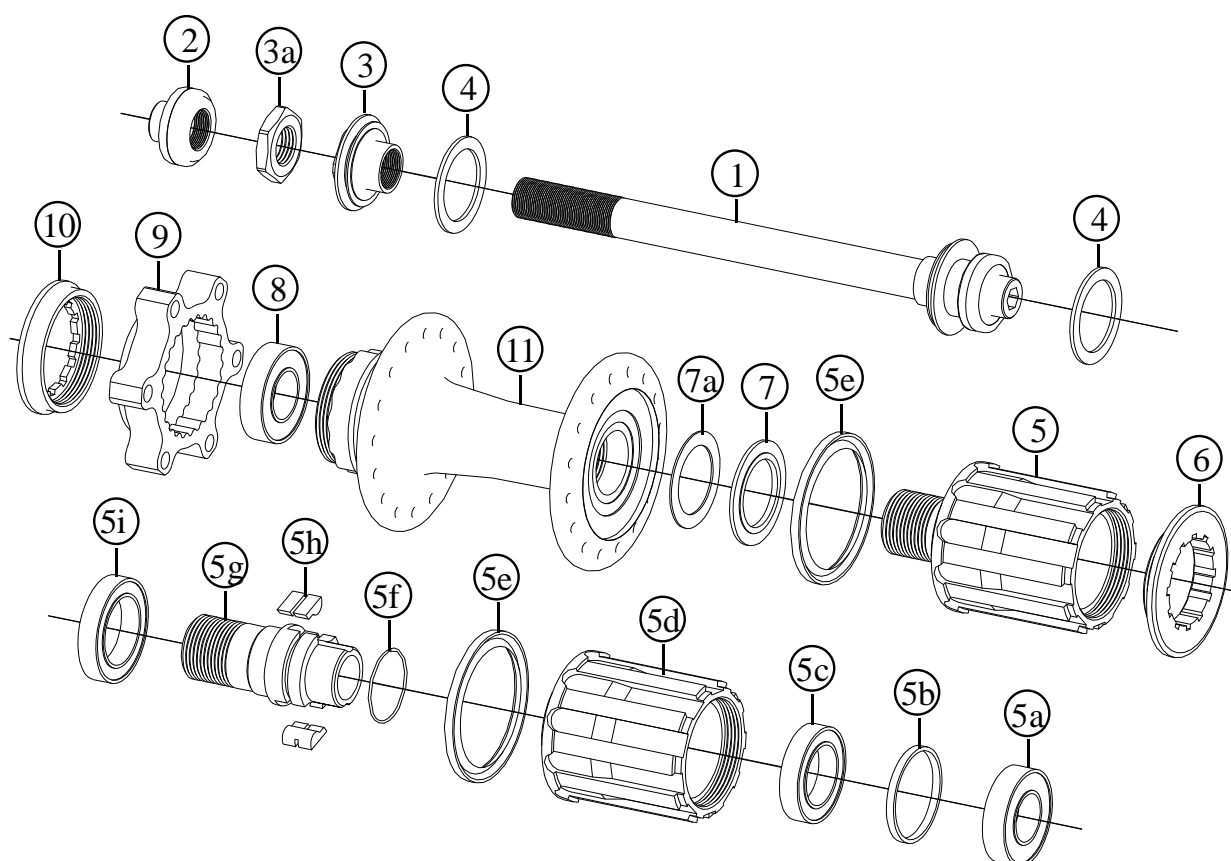
Item no.	Code	DESCRIPTION	Price €
1	RHA01B	Hub Axle assembled. Lock-nut 135 mm / Light alloy	24,20
2	RHA01AM	Axle Cup End for 5mm Allen Key / Light Alloy. MTB 135mm Locknut	3,70
2a	RHA01A	Axle Cup End for 5mm Allen Key / Light Alloy. Road 130mm Locknut	3,70
3	RHA01C2	Left Hand Adjustable Inner Nut / Light Alloy & Lock-Nut (3a)	5,30
4	3FH02DS	Rubber Seal: 24x17x1	0,30
5	RH4SD162TLSS	Freehub Body Ass. for Lip Seal. Steel Bolt M16x2 starts. Red Anodised	107,60
6	RHLRSH11	Lock-ring in light alloy for cog-set –Shimano 11T (series)	7,20
6	RHLRSH12	Lock-ring in light alloy for cog-set –Shimano 12T (optional)	7,20
8 - 5a	HB24126	Freewheel Body Outer Bearing 24x12x6 mm 6901 2RS	7,50
5b	RH04SL1	Freewheel Body Bearing Spacer / Light Alloy	0,60
5c	HB24155	Freewheel Body Middle Bearing 24x15x5 mm 6802 2RS	8,50
5d	RH04SLSLSS	Freewheel Shell for Lip Seal / Light Alloy / Red anodised	30,50
5e	RH04FWLS	Rubber Lip Seal for Freewheel Body (Enduro 37,5x30x2,5mm)	2,00
5f	RHLS07	Pawls Spring 0,7 mm	0,50
5g	RHFWB162S	Freewheel Body Fixing Bolt M16 x 2 starts / HT Steel	35,40
5h	RH04LP	Freewheel pawls /High Tensile Steel (Silicium 52)	10,0 pc
5i	HB26175	Freewheel Body Inner Bearing 26x17x5 mm 6803 2RS	8,00
7	RH04SL3A	Freewheel Body Washer / High Tens. Steel. 2,7mm thick	10,00
7a	RH04SL3B	Steel washer 24x17x0.5mm	0,5
9	RH06SH28	Hub Body M16 28 holes / Light Alloy – Black	56,70
9	RH06SH32	Hub Body M16 32 holes / Light Alloy - Black	56,70

Specifications are subject to change without notice

# FRM

## Rear Hub for MTB FL-M Pro Disc

**2009 Prices for Italian consumers only**



**ALSO SUPPLIED AS WHEELSETS: FL-M12 UFO, FL-M12 XMD**

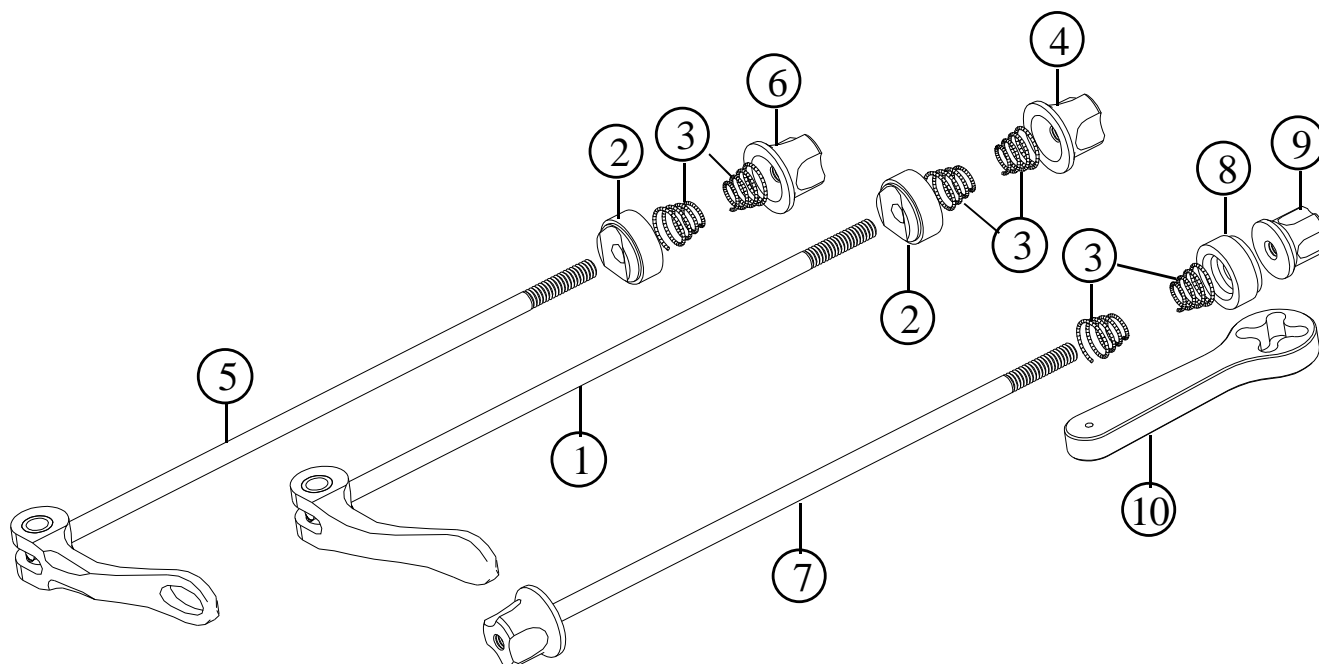
Item no.	Code	DESCRIPTION	Price €
1	RHA01B	Hub Axle assembled. Lock-nut 135 mm / Light alloy	24,20
2	RHA01A	Axle Cup End for 5mm Allen Key / Light Alloy	3,70
3	RHA01C2	Left Hand Adjustable Inner Nut / Light Alloy & Lock-Nut (3a)	5,30
4	3FH02DS	Rubber Seal: 24x17x1	0,30
5	RH4SD162TLSS	Freehub Body Ass. for Lip Seal. Steel Bolt M16x2 starts. Red Anodised	107,60
6	RHLRSH11	Lock-ring in light alloy for cog-set –Shimano 11T (series)	7,20
6	RHLRSH12	Lock-ring in light alloy for cog-set –Shimano 12T (optional)	7,20
8 - 5a	HB24126	Freewheel Body Outer Bearing 24x12x6 mm 6901 2RS	7,50
5b	RH04SL1	Freewheel Body Bearing Spacer / Light Alloy	0,60
5c	HB24155	Freewheel Body Middle Bearing 24x15x5 mm 6802 2RS	8,50
5d	RH04SLSLSS	Freewheel Shell for Lip Seal / Light Alloy / Red anodised	30,50
5e	RH04FWLS	Rubber Lip Seal for Freewheel Body (Enduro 37,5x30x2,5mm)	2,00
5f	RHLS07	Pawls Spring 0,7 mm	0,50
5g	RHFWSB162S	Freewheel Body Fixing Bolt M16 x 2 starts / HT Steel	35,40
5h	RH04LP	Freewheel pawls /High Tensile Steel (Silicium 52)	10,0 pc
5i	HB26175	Freewheel Body Inner Bearing 26x17x5 mm 6803 2RS	8,00
7	RH04SL3A	Freewheel Body Washer / High Tens. Steel. 2,7mm thick	10,00
7a	RH04SL3B	Steel washer 24x17x 0.5mm	0,5
9	DH-DF2	Disc Flange 6 holes International Std. (Black anodised)	25,00
10	DH-LR1	Lock Ring for Disc Flange (Gold anodised)	9,00
11	RH05H28	Hub Body M16 28 holes / Light Alloy – Black	59,90
11	RH05H32	Hub Body M16 32 holes / Light Alloy - Black	59,90

Specifications are subject to change without notice

# FRM

Quick Release

**SK-Pro - SK-R Team - SK-M Team - SK-R Team SL - SK-M Team SL**  
**2009 Prices for Italian consumers only**



Item no.	Code	DESCRIPTION	Price €
1	QRPLF	Front Pro Lever Black & Axle Assembly (Steel 4,5mm)	15,50
1	QRPLR	Rear Pro Lever Black & Axle Assembly (Steel 4,5mm)	15,50
2	QR00A	Washer with concave Delrin pad	2,60
3	QR00B	Spring	0,80
4	QR00CP	Nut for Pro axle with M4,5 Thread	2,60
5	QRTLF	Front Team Lever Black & Axle Assembly (Titanium 4mm)	30,50
5	QRTLFG	Front Team Lever Gold & Axle Assembly (Titanium 4mm)	30,50
5	QRTLRL	Rear Team Lever Black & Axle Assembly for Road (Titanium 4mm)	30,50
5	QRTLRLG	Rear Team Lever Gold & Axle Assembly for Road (Titanium 4mm)	30,50
5	QRTLRLM	Rear Team Lever Black & Axle Assembly for MTB (Titanium 4mm)	30,50
5	QRTLRLGM	Rear Team Lever Gold & Axle Assembly for MTB (Titanium 4mm)	30,50
6	QR00C	Nut for Team axle with M4,0 thread	2,6
7	QRTLRLSL	Rear Team SL Axle Assembly for Road (Titanium 4mm)	25,20
7	QRTLRLMSL	Rear Team SL Axle Assembly for MTB (Titanium 4mm)	25,20
8	QR00ASL	Washer with flat Delrin pad for Team SL skewers	2,60
9	QR00CSL	Nut for Team SL axle with M4,0 thread	2,60
10	SLTOOL	Tool for Team SL skewers. Red Anodised	10,50

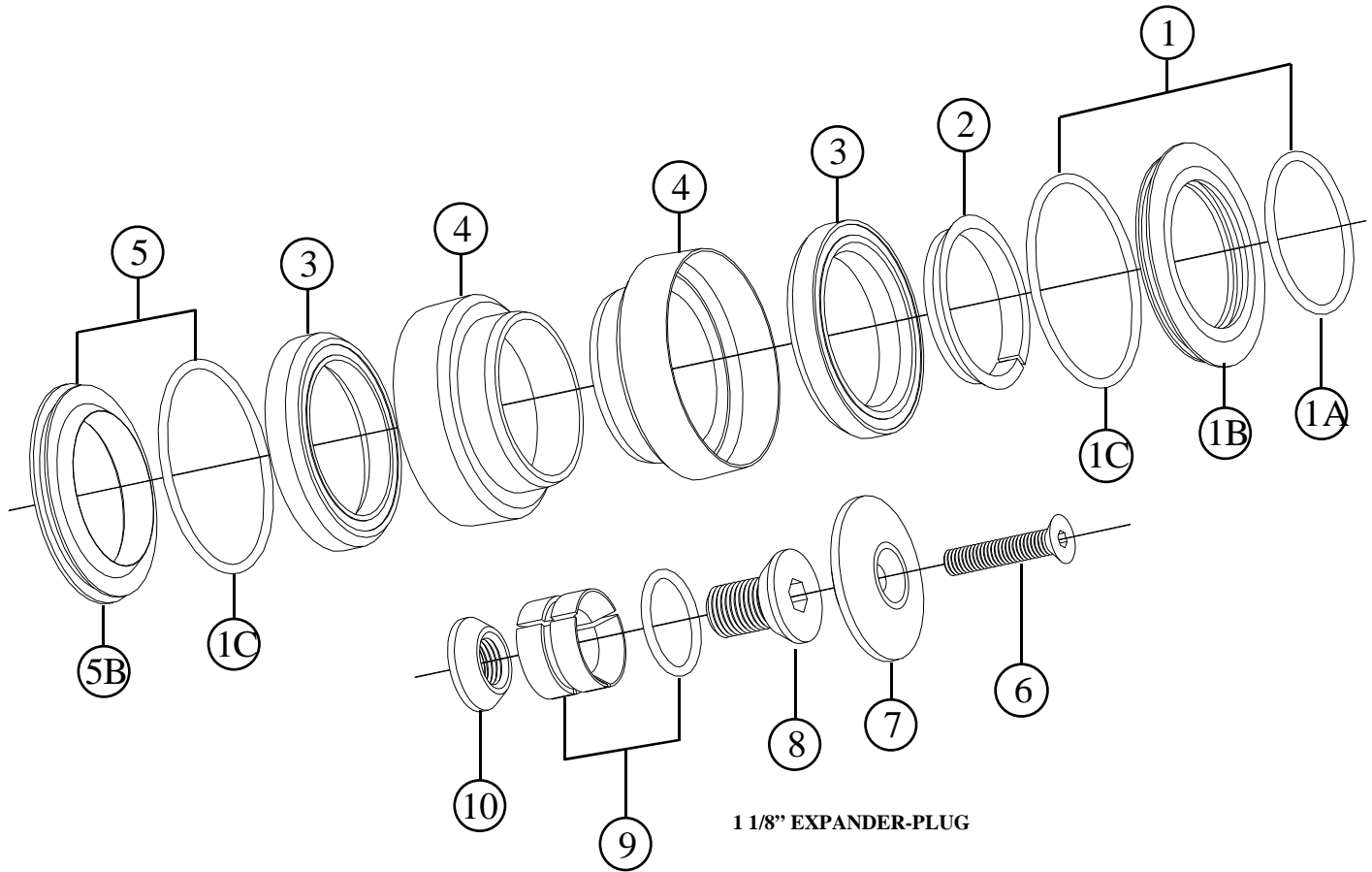
Specifications are subject to change without notice

# FRM

Head Set

## C-SET Pro - C-SET Team

2009 Prices for Italian consumers only



Item no.	Code	DESCRIPTION	Price €
1	HSC201	Upper Head Cone Assembly	6,30
1A	OR2112	O-Ring 2112 (I.D.28,30x1,78 mm)	0,20
1B	HSC201B	Upper Head Cone Housing / Light Alloy	6,70
1C	OR2137	O-Ring 2137 (I.D.33,05x1,78 mm)	0,20
2	HSC202	Upper Head Split Cone / Light Alloy	3,00
3	TH-872	Bearing Micro ABC 36° x 36° 41,5x30,15x6,5. Original equipment of C-Set Pro	12,60
3	TH-872SS	As above but in Stainless Steel. Original equipment of C-Set Team	19,10
4	HSC204	Lower or Upper Head Cup Housing 34,1 mm / Black anodised	7,00
5	HSC205	Lower Head Cone Assembly	3,70
6	TSCCE525	Bolt for play adjustment M5 x 25 Cone-Head / Steel. Original equipment of C-Set Pro	0,20
6	TSCCE525E	As above but in Light Alloy – Gold Anodised. Original equipment of C-Set Team	3,00
7	EP201	Cap / Light Alloy / Black Anodised. Original equipment of C-Set Pro	4,20
7	EP201T	Cap / Light Alloy / Red Anodised. Original equipment of C-Set Team	5,00
8	EP102	Male Cone Bolt / Light Alloy	2,10
9	EP203	Three-Piece Expander with O-Ring 122	3,70
10	EP104	Female Cone Nut / Light Alloy	1,10

Note: modified from Spare Part Manual dated March 2008

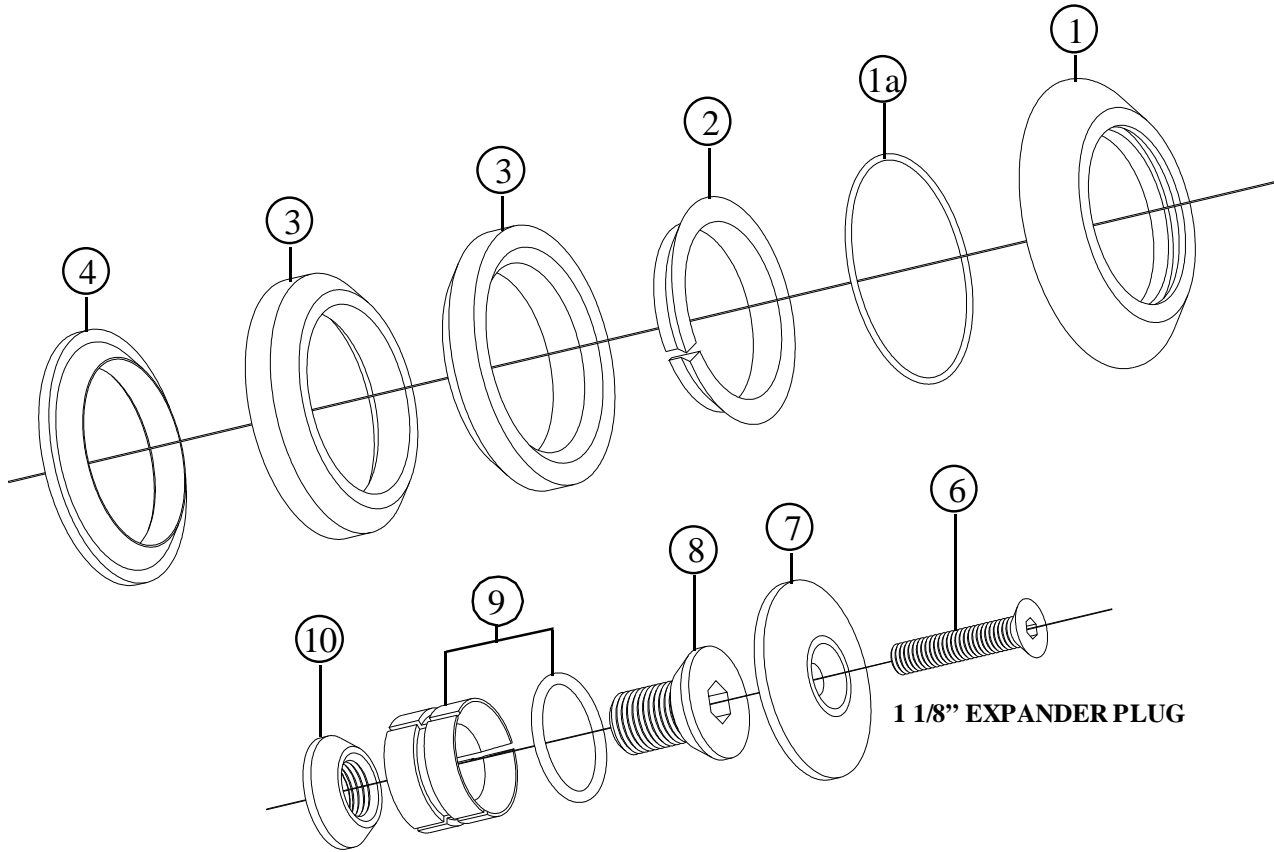
Specifications are subject to change without notice

# FRM

Integrated Head Set

## I-SET Pro - I-SET Team

2009 Prices for Italian consumers only



Item no.	Code	DESCRIPTION	Price €
1	HSI201	Upper Head Cone Housing / Light Alloy	7,40
1a	HSI21OR	O-Ring	0,20
2	HSI202	Upper Head Split Cone / Light Alloy	3,00
3	TH-870	Bearing Micro ABC 45°x45° 41,8x8mm. Original equipment of I-Set Pro	12,80
3	TH-870SS	As above but in Stainless Steel. Original equipment of I-Set Team	24,50
4	HSI205	Lower Head Cone	3,70
6	TSCCE525	Bolt for play adjustment M5 x 25 Cone-Head / Steel. Original equipment of I-Set Pro	0,20
6	TSCCE525E	As above but in Light Alloy – Gold Anodised. Original equipment of I-Set Team	3,00
7	EP201	Cap / Light Alloy / Black. Original equipment of I-Set Pro	4,20
7	EP201T	Cap / Light Alloy / Red. Original equipment of I-Set Team	5,00
8	EP102	Male Cone Bolt / Light Alloy	2,10
9	EP203	Three-Piece Expander with O-Ring 122	3,70
10	EP104	Female Cone Nut / Light Alloy	1,10

Note: modified from Spare Part Manual dated March 2008

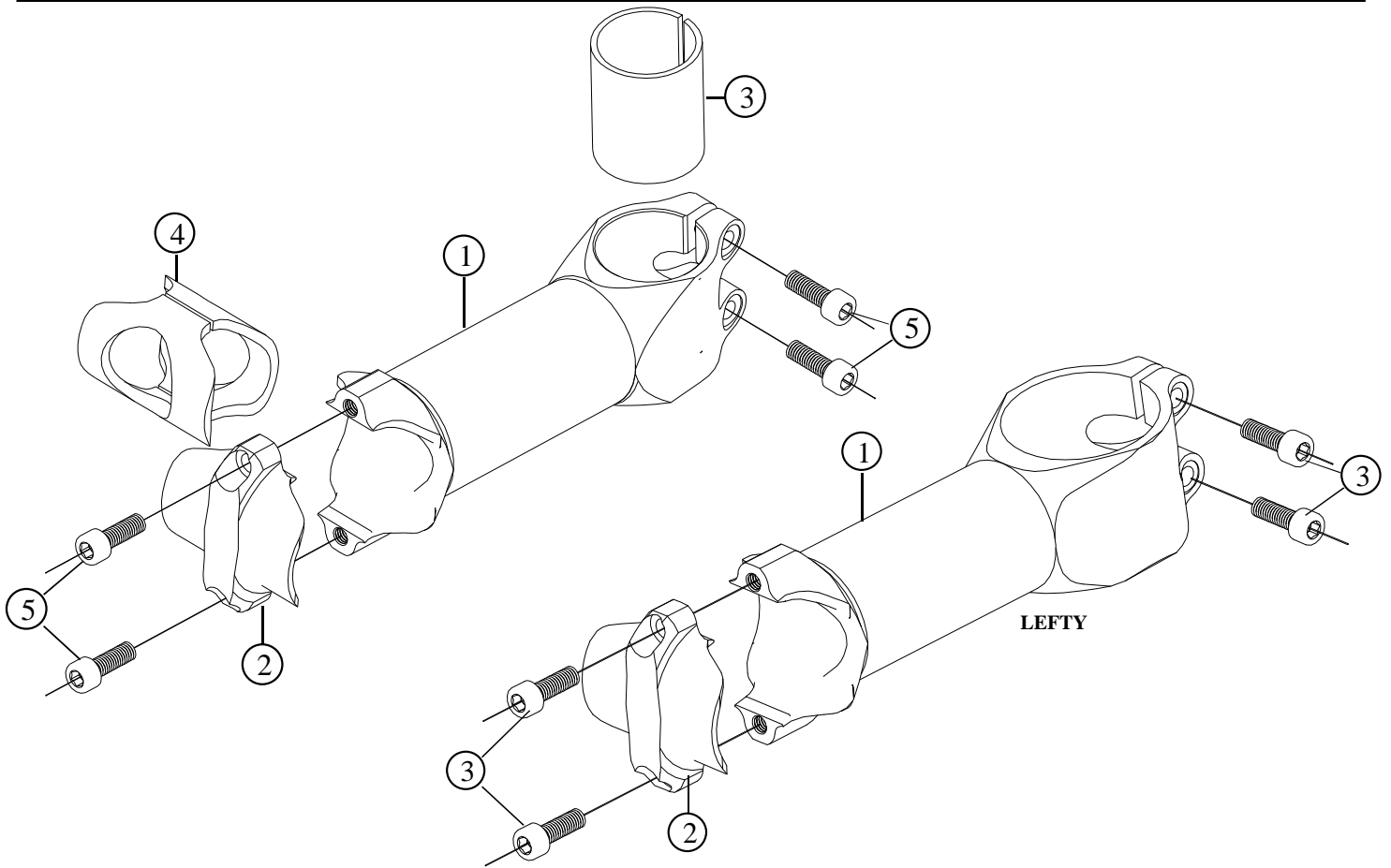
Specifications are subject to change without notice

# FRM

Stem for Road & MTB

**Web-Stem CF - Web-Stem FC Ti. – Web Stem 32 – Web Stem 32 Ti.**  
**Lefty Web-Stem CF – Lefty Web-Stem FC Ti.**

**2009** Prices for Italian consumers only



Item no.	Code	DESCRIPTION	Price €
1	WS05AL	Carbon fibre Stem Shaft 90 mm (Gold or Black) 31,8 mm	84,00
1	WS05BL	Carbon fibre Stem Shaft 100 mm (Gold or Black) 31,8 mm	84,00
1	WS05CL	Carbon fibre Stem Shaft 110 mm (Gold or Black) 31,8 mm	84,00
1	WS05DL	Carbon fibre Stem Shaft 120 mm (Gold or Black) 31,8 mm	84,00
1	WS05EL	Carbon fibre Stem Shaft 130 mm (Gold or Black) 31,8 mm	84,00
1	WS05BL	Light alloy Stem Shaft 100 mm (Black) 31,8 mm	65,00
1	WS05CL	Light alloy Stem Shaft 110 mm (Black) 31,8 mm	65,00
1	WS05DL	Light alloy Stem Shaft 120 mm (Black) 31,8 mm	65,00
1	WS05EL	Light alloy Stem Shaft 130 mm (Black) 31,8 mm	65,00
1	WS05BLL	Carbon fibre Stem. Lefty Shaft 100 mm (Gold or Black) 31,8mm	94,50
1	WS05CLL	Carbon fibre Stem. Lefty Shaft 110 mm (Gold or Black) 31,8 mm	94,50
1	WS05DLL	Carbon fibre Stem. Lefty Shaft 120 mm (Gold or Black) 31,8 mm	94,50
1	WS05ELL	Carbon fibre Stem. Lefty Shaft 130 mm (Gold or Black) 31,8 mm	94,50
2	WS06B	Stem Cap / Black	13,70
2	WS06G	Stem Cap / Gold	13,70
2	<b>WS06R</b>	<b>Stem Cap / Red . With Titanium Bolts Only</b>	13,70
3	WS03	Sleeve from 1 1/8" to 1" fork steerer	3,00
4	WS04	Sleeve for 26,0 mm handlebars. Black	8,00
5	TCC515S	Allen Bolt M5x15 / Steel	0,10
5	TCC515T	Allen Bolt M5x15 / Titanium - <b>Gold Plated</b>	5,60

Note: modified from Spare Part Manual dated March 2008

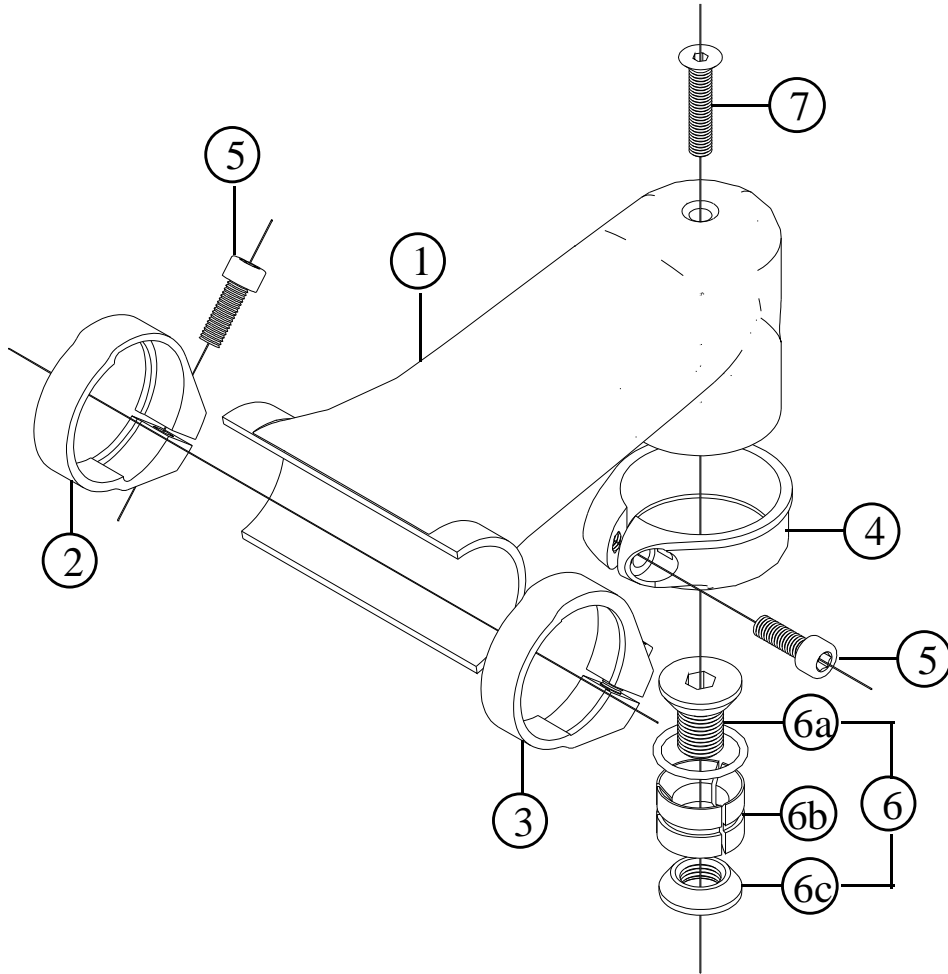
Specifications are subject to change without notice

# FRM

Stem for Road

## HS-R BLACK HOLE

**2009 Prices for Italian consumers only**



Item no.	Code	DESCRIPTION	Price €
1	BHSTM90	Carbon fibre Stem - Monocoque 90 mm 31,8 mm	330,00
1	BHSTM100	Carbon fibre Stem - Monocoque 100 mm 31,8 mm	330,00
1	BHSTM110	Carbon fibre Stem - Monocoque 110 mm 31,8 mm	330,00
1	BHSTM120	Carbon fibre Stem - Monocoque 120 mm 31,8 mm	330,00
1	BHSTM130	Carbon fibre Stem - Monocoque 130 mm 31,8 mm	330,00
2	BHHBCR	Right Hand Handlebar Clamp. 31,8 mm dia Black.	11,90
3	BHHBCL	Left Hand Handlebar Clamp. 31,8 mm dia Black.	11,90
4	STAC35B	SC35 Seat Clamp. 34,9 mm dia Black. Without bolt	12,00
4	STAC35G	SC35 Seat Clamp. 34,9 mm dia Gold. Without bolt	12,00
5	TCC515T	Allen Bolt M5x15 / Titanium - Gold plated	5,60
6	EP100	Expander Assembly / Light Alloy	6,90
6a	EP102	Male Cone Bolt / Light Alloy	2,10
6b	EP203	Three-Piece Expander with O-Ring 122	3,70
6c	EP104	Female Cone Nut / Light Alloy	1,10
7	TSCCE525E	Bolt for play adjustment M5 x 25 Cone-Head / Light Alloy - Gold anodised	3,00

Note: modified from Spare Part Manual dated March 2008

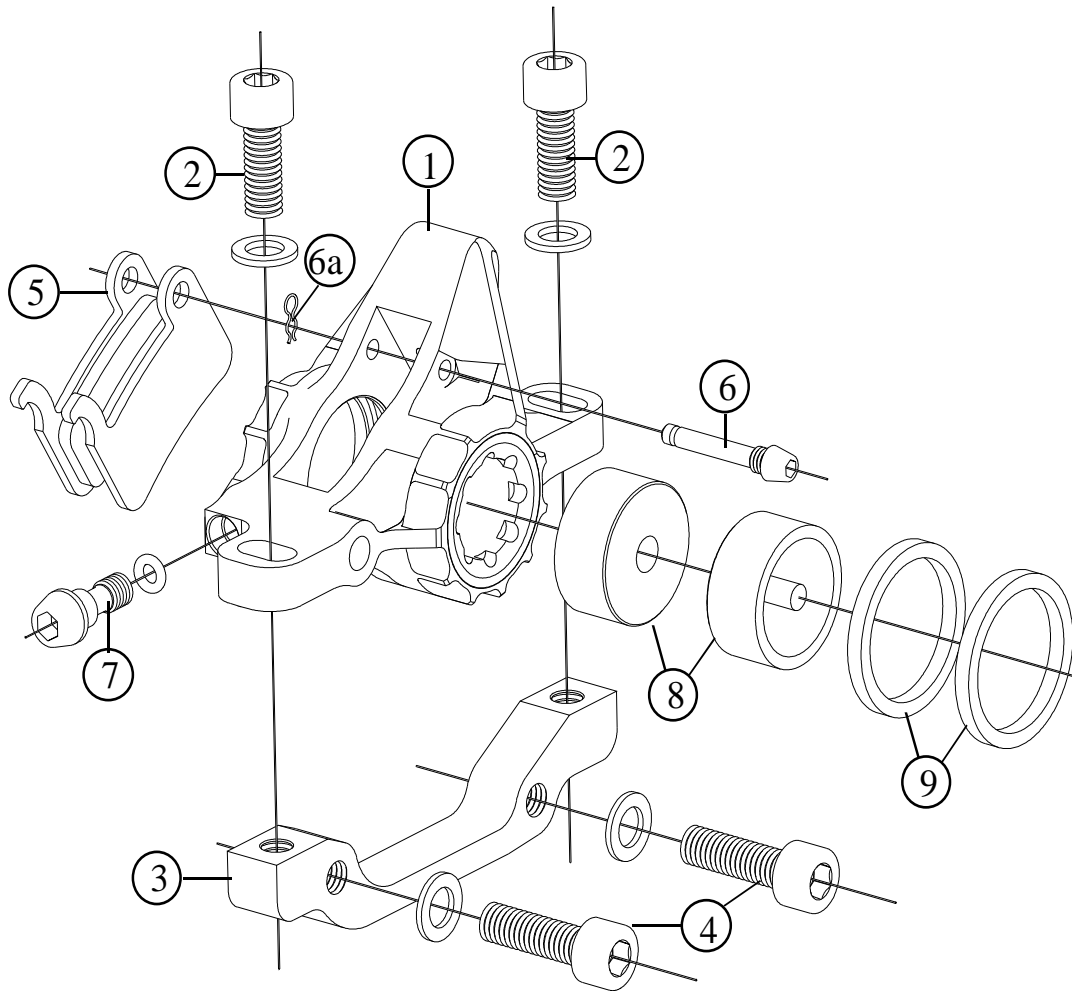
Specifications are subject to change without notice

# FRM

Disc Brakes - Caliper

## DBR 250 – DBR 300 – DBR 300DH

2009 Prices for Italian consumers only



Item no.	Code	DESCRIPTION	Price €
1	DBR300CABR	Caliper Body & Cap. Post-Mount Type. Red Anodised (DBR300 & 250)	65,00
1	DBR300CABG	Caliper Body & Cap. Post-Mount Type. Gold Anodised (DBR300 & 250)	65,00
2	TCC215SS	Body Fixing Bolts M6x15 & Washer. Stainless Steel (DBR300)	0,30
2	TCC615TI	Body Fixing Bolts M6x18 & Washer. Titanium, Gold Plated (DBR250)	7,10
3	AU01	Adapter from I.S to P-M: 160mm front or 140mm rear rotor. With two steel bolts	8,40
3	AU02	Adapter from I.S to P-M: 180mm front or 160mm rear rotor. With two steel bolts	8,40
3	AU04	Adapter rear 180mm. With two steel bolts	8,40
3	AU31	Adapter for Post-Mount fork: 180mm front rotor. With steel bolts and washers	14,00
4	TCC620TI	OPTIONAL: Adapter Fixing Bolts M6x18 & Washer. Titanium, Gold Plated	7,10
5	AD014MS	Pads. XTR compat. w/spring. Metallic compound. Steel Backing (Copper color) – DBR300DH	19,60
5	AD014SS	Pads. XTR compat. w/spring. SemiMetallic Compound. Steel Backing (Black color) – DBR300	9,80
5	AD014SA	Pads. XTR compat. w/spring. Organic Compound. Alloy Backing (Silver color) – DBR250	21,00
6-6a	DBR300CB	Pads Fixing Pin. Light Alloy with Pin Spring. Black Anodised (DBR300 & 250)	1,10
7	DBR300CD	Bleed Bolt. Light Alloy & O-Ring (DBR300 & 250)	2,50
8	DBR300P	Pistons. (DBR300 & 250)	2pcs 15,50
9	DBR300S	EPDM Seals. (DBR300 & 250)	2pcs 2,80

Note: modified from Spare Part Manual dated March 2008

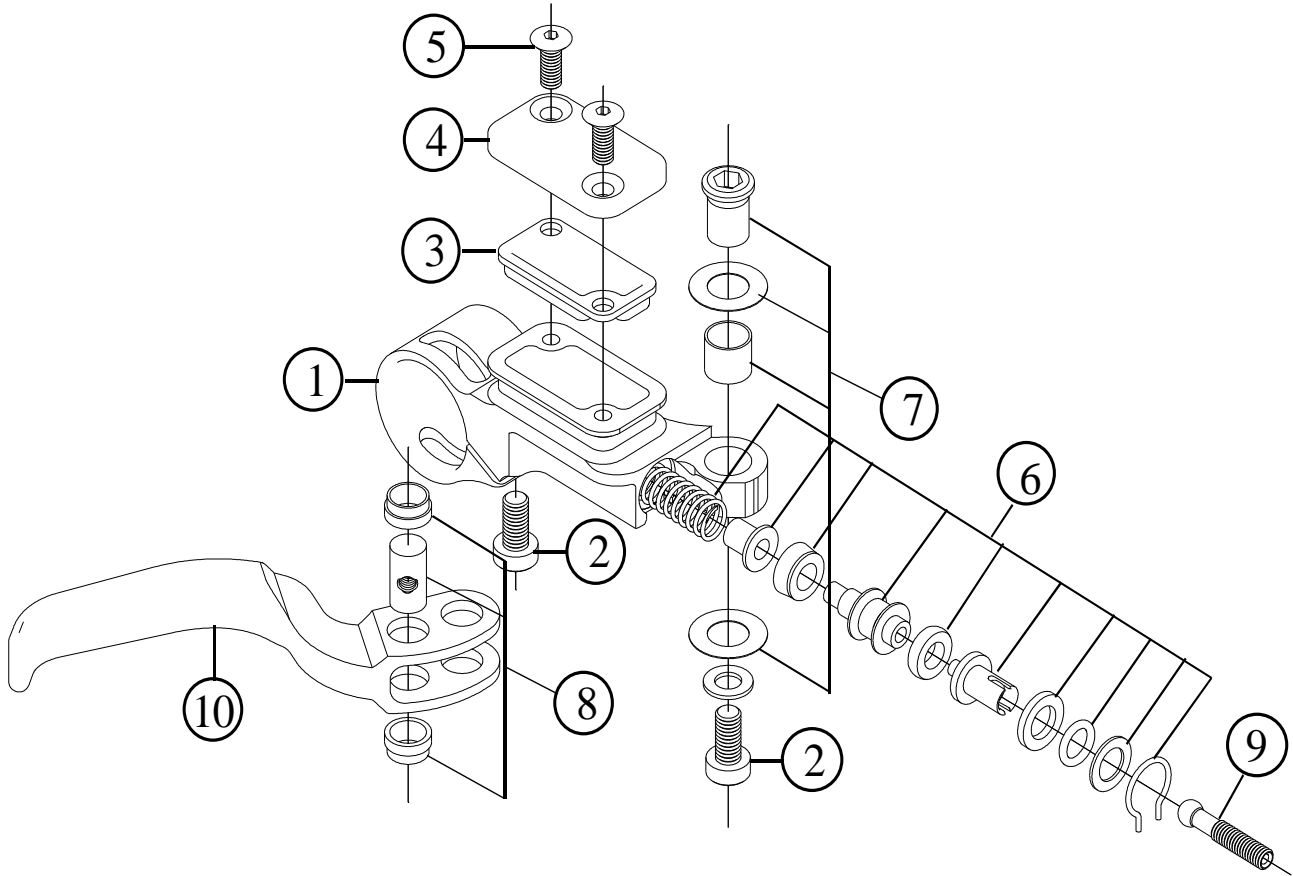
Specifications are subject to change without notice

# FRM

Disc Brakes – Pumps

## DBR 250 – DBR 300 – DBR 300DH

2009 Prices for Italian consumers only



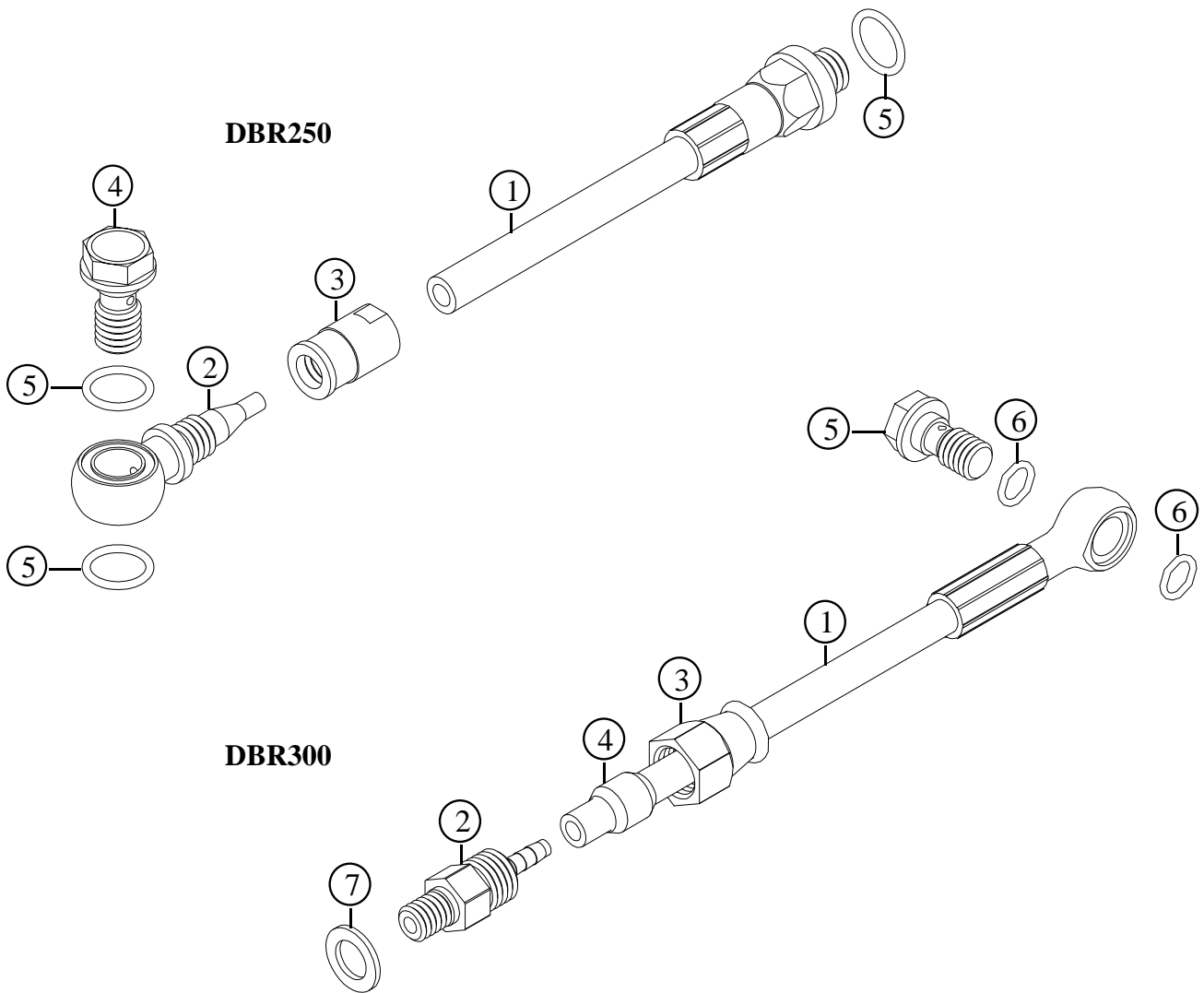
Item no.	Code	DESCRIPTION	Price €
1	DBR300LARR	Brake Pump Body. Right side. Red Anodised (DBR300 & 250)	45,00
1	DBR300LARG	Brake Pump Body. Right side. Gold Anodised (DBR300 & 250)	45,00
1	DBR300LALR	Brake Pump Body. Left side. Red Anodised (DBR300 & 250)	45,00
1	DBR300LALG	Brake Pump Body. Left side. Gold Anodised (DBR300 & 250)	45,00
2	TCC510S	Allen Bolt M5x10mm. Stainless Steel (DBR300)	0,15
2	TX510TI	Torx Bolt M5x10mm. Light Alloy – Gold Anodised (DBR250)	2,10
3	DBR300RM	Reservoir Membrane. EPDM Rubber (DBR300 & 250)	2,00
4	DBR300LB	Reservoir Cap. Light Alloy (DBR300 & 250)	7,00
5	TSCCE45S	Come Head Bolt. M4x5mm. Stainless Steel (DBR300)	0,05
5	TSCCE4LAR	Come Head Bolt. M4x5mm. Light Alloy, Red Anodised (DBR250)	1,20
5	TSCCE4LAG	Come Head Bolt. M4x5mm. Light alloy, Gold Anodised (DBR250)	1,20
6	DBR300PK	Piston Kit. Piston Parts, EPDM Seals, Washers and Springs (DBR300 & 250)	18,70
7	DBR300BLBA	Brake Lever Bushing & Axle	7,00
8	DBR300BLPRA	Brake Lever Push Rod Axle & Bushings	7,00
9	DBR300BLPR	Brake Lever Push Rod	3,00
10	DBR300BLR	Brake Lever. Right side. Light Alloy. Black Anodised (DBR300&250)	25,00
10	DBR300BLL	Brake Lever. Left side. Light Alloy. Black Anodised (DBR300&250)	25,00

Specifications are subject to change without notice

# FRM

Disc Brakes – Hose & Fittings

## DBR 250 – DBR 300 – DBR 300DH



Item no.	Code	DESCRIPTION	Price €
<b>DBR 250</b>			
1	FTCT850	Frentubo Carbotech Hose and Pressed M-Joint (light alloy). Front 850mm long	15,00
1	FTCT1450	Frentubo Carbotech Hose and Pressed M-Joint (light alloy). Rear 1450mm long	26,00
2	FT13508/B	Banjo in Light Alloy	9,50
3	FT13608/A	Locking Nut for Banjo in Light Alloy	8,00
4	FTB50106	Locking Bolt of Banjo in Light Alloy	5,60
5	OREPDM7x1	O-Ring 7x1 in EPDM rubber	0,34
<b>DBR 300 &amp; DBR300DH</b>			
1	HHBB-850	PVDF Kevler Braided hose (5,5mm) with Pressed Banjo (steel). Front 850mm long	12,30
1	HH-BB-1450	PVDF Kevler Braided hose (5,5mm) with Pressed Banjo (steel). Rear 1450mm long	18,80
1	HHBB-900	PVDF Stainless Steel Braided hose with Pressed Banjo (steel). Front 900mm long. 300DH	20,20
1	HH-BB-1500	PVDF Stainless Steel Braided hose with Pressed Banjo (steel). Rear 1500mm long. 300DH	26,80
2	HP-02-10	M-Joint in Steel	4,20
3	HP-04-10	Locking Nut of M-Joint in Steel	2,4
4	HP-06-10	Compress Barrel for 5,5mm hose (10pcs)	9,30
5	HP-03-10	Locking Bolt of Banjo in Steel	2,10
6	OR-EPDM6x1	O-Ring 6x1 in EPDM rubber	0,34
7	CW96	Copper Washer 9,9x6x1	1,00

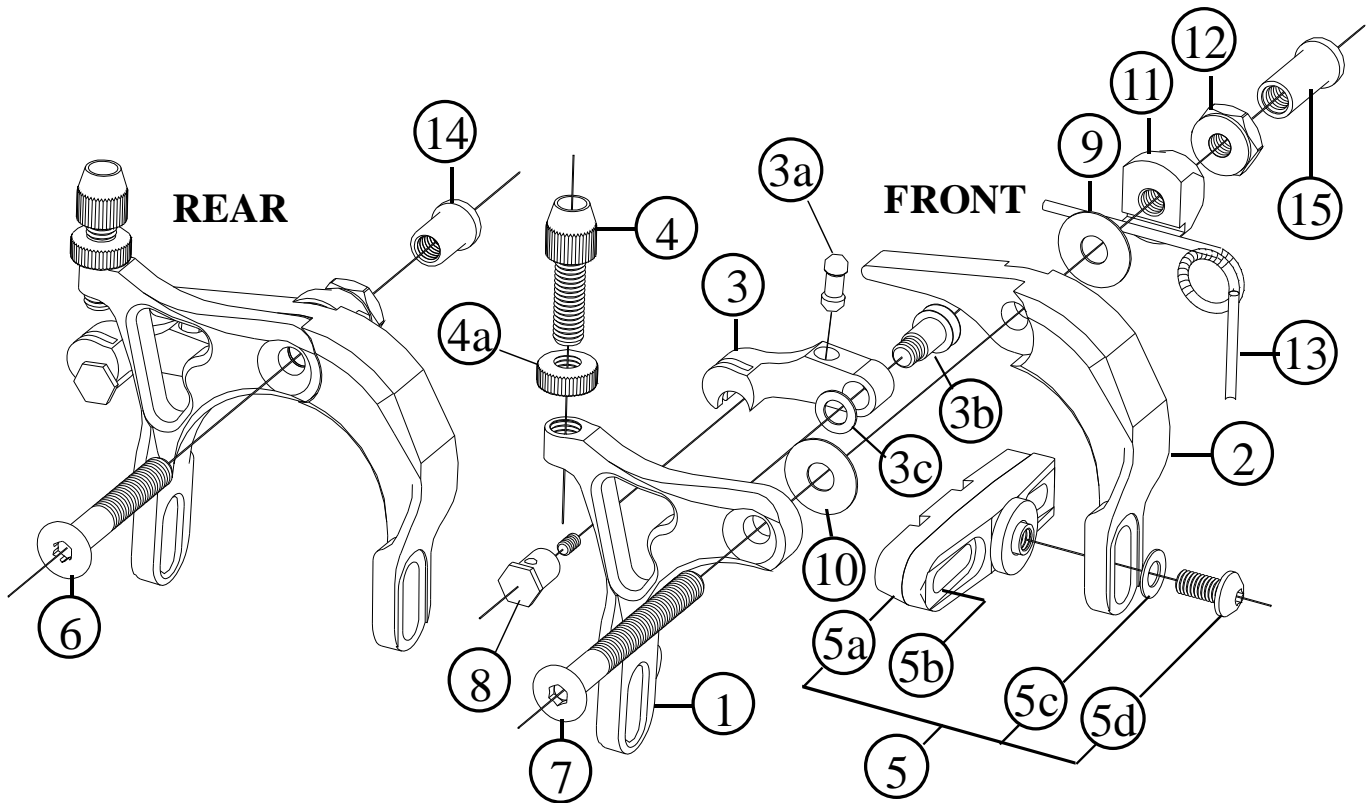
Specifications are subject to change without notice

# FRM

Brakes for Road

## CL2 - CL2 Pro Ti. - CL2 Team

2009 Prices for Italian consumers only



Item no.	Code	DESCRIPTION	Price €
1	CL2AF	A Arm (Front)	18,90
2	CL2BF	B Arm (Front)	18,90
3	CL2C	C Arm (Front)	13,20
3a	CL2CA	Push-Rod (Steel)	1,80
3b	CL2CB	C-Arm Pivot (Steel)	2,10
3c	CL2CC	Pivot Washer (9x6x0,5 mm)	0,30
4	CL201	Cable Adjusting Barrel (M6)	3,20
4a	CL202	Cable Adjusting Nut	2,10
5	CL2-PH	Pad Holder. Light Alloy / Steel Bolt & CL2 Multistage Pads	Set of 2 pcs 12,00
5	CL2-PH Ti.	Pad Holder Skeleton type. Titanium Bolt & CL2 Multistage Pad	Set of 2 pcs 38,30
5	CL2-PH Team	Pad Holder. Carbon fibre body / Titanium Bolt & CL2 Multistage Pads	Set of 2 pcs 76,70
5a	461	Replacement Pads CL2P Multistage 3 Color. Long Fin	Set of 2 pcs 7,80
5a	2006-05-04	Corima Replacement Pads for Carbon Fibre Rims	Set of 2 pcs 14,80
5d	TCC510Ti.	Pad Holder Fixing Bolt in Titanium (Button Head, M5x10 mm)	6,50
6	CL204	Rear Brake Axle in Steel (M6x40 mm)	5,30
6	CL204Ti.	Rear Brake Axle in Titanium (M6x40 mm)	11,60
7	CL205	Front Brake Axle in Steel (M6x55 mm)	6,80
7	CL205Ti.	Front Brake Axle in Titanium (M6x55 mm)	13,70
8	CL210	Cable Anchor (Light Alloy)	3,80
9	WD016	Plastic Washer (16x6x0,6 mm)	0,50
10	WD0161	Plastic Washer (16x6x1 mm)	0,50
11	CL206	Spring Holder (Light Alloy)	2,60
12	CL207	Lock-Nut (Light Alloy)	1,60
13	CL2RS	Steel Spring	1,00
14	CL209	Rear Axle Lock-Nut (Short)	3,20
15	CL208	Front Axle Lock-Nut (Long)	3,20

Specifications are subject to change without notice

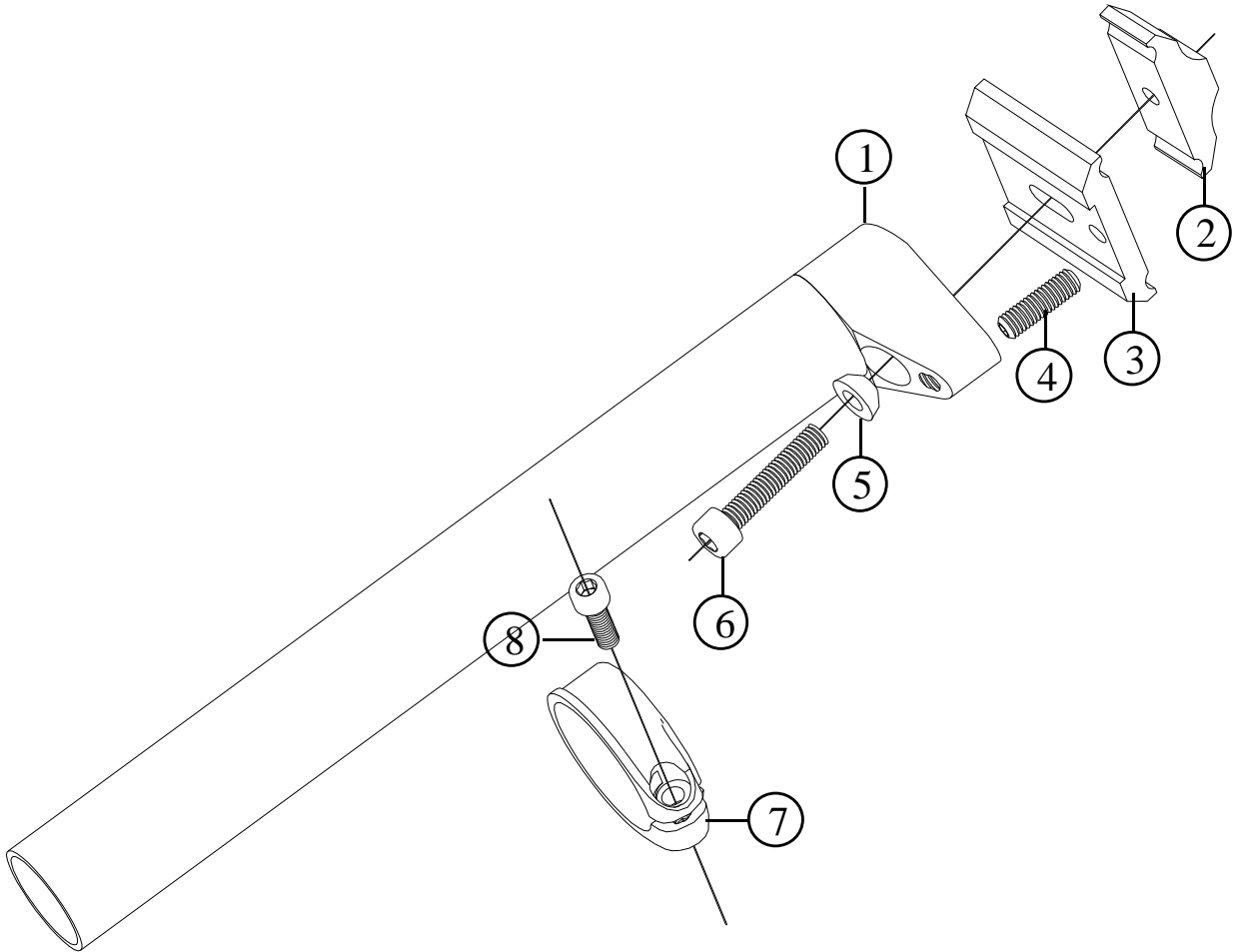
# FRM

Seatpost and Seat Collar for Road & MTB

**ST-R21 Carbon Ti. 27,2 x 250 - ST-M21 Carbon Ti. 27,2 x 350**

**ST-R21 Carbon Ti. 31,6 x 250 - ST-M21 Carbon Ti. 31,6 x 400**

**2009 Prices for Italian consumers only**



Item no.	Code	DESCRIPTION	Price €
1	STR211B	Carbon Fibre Post 27,2 x 250 mm (ST-R21 Carbon Ti.)	84,00
1	STM211B	Carbon Fiber Post 27,2 x 350 mm (ST-M21 Carbon Ti.)	110,00
1	STR211C	Carbon Fibre Post 31,6 x 250 mm (ST-R21 Carbon Ti.)	97,00
1	STM211C	Carbon Fibre Post 31,6 x 400 mm (ST-M21 Carbon Ti.)	122,00
2	STOS03T	Rails Clamp for M7 Titanium Bolt (Black anodised)	10,50
3	STOS02	Rails Platform / Light Alloy	13,70
4	STOS04	Dowel	0,10
6	TCC730T	Allen Bolt M7x35 mm in Titanium	13,90
7	STAC35B	SC35 Seat Clamp. 34,9 mm dia Black. Without Bolt	11,90
7	STAC35G	SC35 Seat Clamp. 34,9 mm dia Gold. Without Bolt	11,90
7	STAC35R	SC35 Seat Clamp. 34,9 mm dia Red. Without Bolt	11,90
7	STAC32B	SC32 Seat Clamp. 31,6 mm dia Black. Without Bolt	11,90
7	STAC32G	SC32 Seat Clamp. 31,6 mm dia Gold. Without Bolt	11,90
7	STAC32R	SC32 Seat Clamp. 31,6 mm dia Red. Without Bolt	11,90
8	TCC515S	Allen Bolt M5x15 / Steel	0,10
8	TCC515T	Allen Bolt M5x15 / Titanium – Gold Plated	5,60

Note: modified from Spare Part Manual dated March 2008

Specifications are subject to change without notice

# FRM

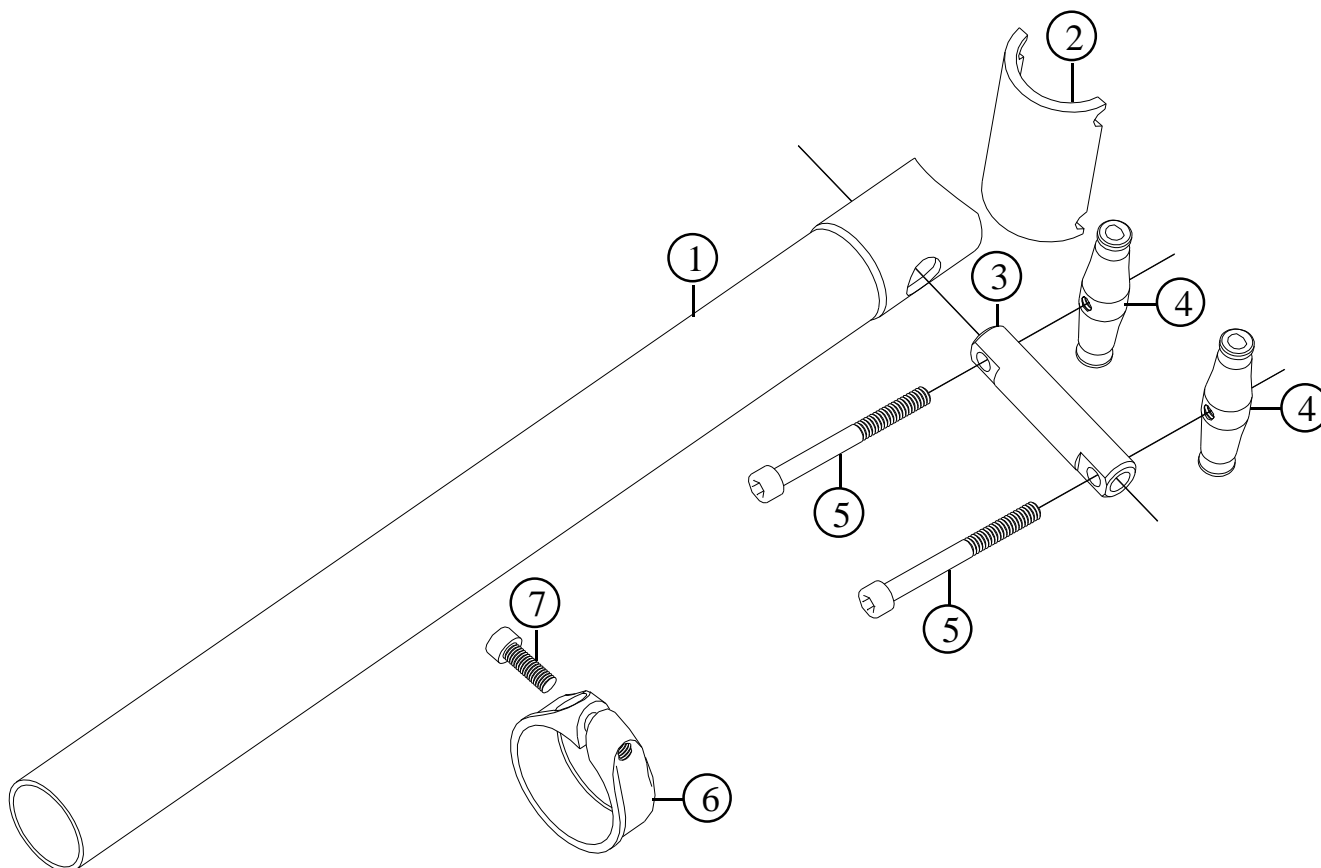
Seatpost for MTB

**ST-M10 27,2X350 - ST-M10 30,9X350 - ST-M10 31,6X350**

**ST-M10 Ti. 27,2X350 - ST-M10 TI. 30,9X350 - ST-M10 Ti. 31,6x350**

**ST-M20 Carbon Ti. 27,2X350**

**2009 Prices for Italian consumers only**



Item no.	Code	DESCRIPTION	Price €
1	STM101B	Light Alloy Post 27,2 x 350 mm . Externally double butted - ST-M10	40,00
1	<b>STM101C</b>	<b>Light Alloy Post 30,9 x 350 mm . Externally double butted - ST-M10</b>	51,00
1	<b>STM101D</b>	<b>Light Alloy Post 31,6 x 350 mm . Externally double butted - ST-M10</b>	51,00
1	STM201B	Carbon Fiber Post 27,2 x 350 mm - ST-M20 Carbon Ti.	97,00
2	STM102	Rails Cradle for Steel Bolts. Light Alloy. Black anodised	6,00
2	STM102C	Rails Cradle for Titanium Bolts Light Alloy. Red anodised	8,00
3	STM103	Pin for steel bolts of ST-M10 27,2mm. Silver anodised	6,00
3	STM103T	Pin for all models except ST-M10 27,2mm. Black anodised	7,00
4	STM104	Rail Clamp for M5 Steel Bolts. Silver	6,30
4	STM104T	Rail Clamp for M6 Titanium Bolts. Black	6,30
5	TCC550	Allen Bolt M5x50 mm in Steel	0,35
5	TCC558T	Allen bolt M6x50 mm in Titanium	13,90
6	STAC35B	SC35 Seat Clamp. 34,9 mm dia Black. Without Bolt	11,90
6	STAC35G	SC35 Seat Clamp. 34,9 mm dia Gold. Without Bolt	11,90
6	<b>STAC35R</b>	<b>SC35 Seat Clamp. 34,9 mm dia Red. Without Bolt</b>	11,90
6	STAC32B	SC32 Seat Clamp. 31,6 mm dia Black. Without Bolt	11,90
6	STAC32G	SC32 Seat Clamp. 31,6 mm dia Gold. Without Bolt	11,90
6	<b>STAC32R</b>	<b>SC32 Seat Clamp. 31,6 mm dia Red. Without Bolt</b>	11,90
7	TCC515S	Allen Bolt M5x15 / Steel	0,10
7	TCC515T	Allen Bolt M5x15 / Titanium – Gold Plated	5,60

Note: modified from Spare Part Manual dated March 2008

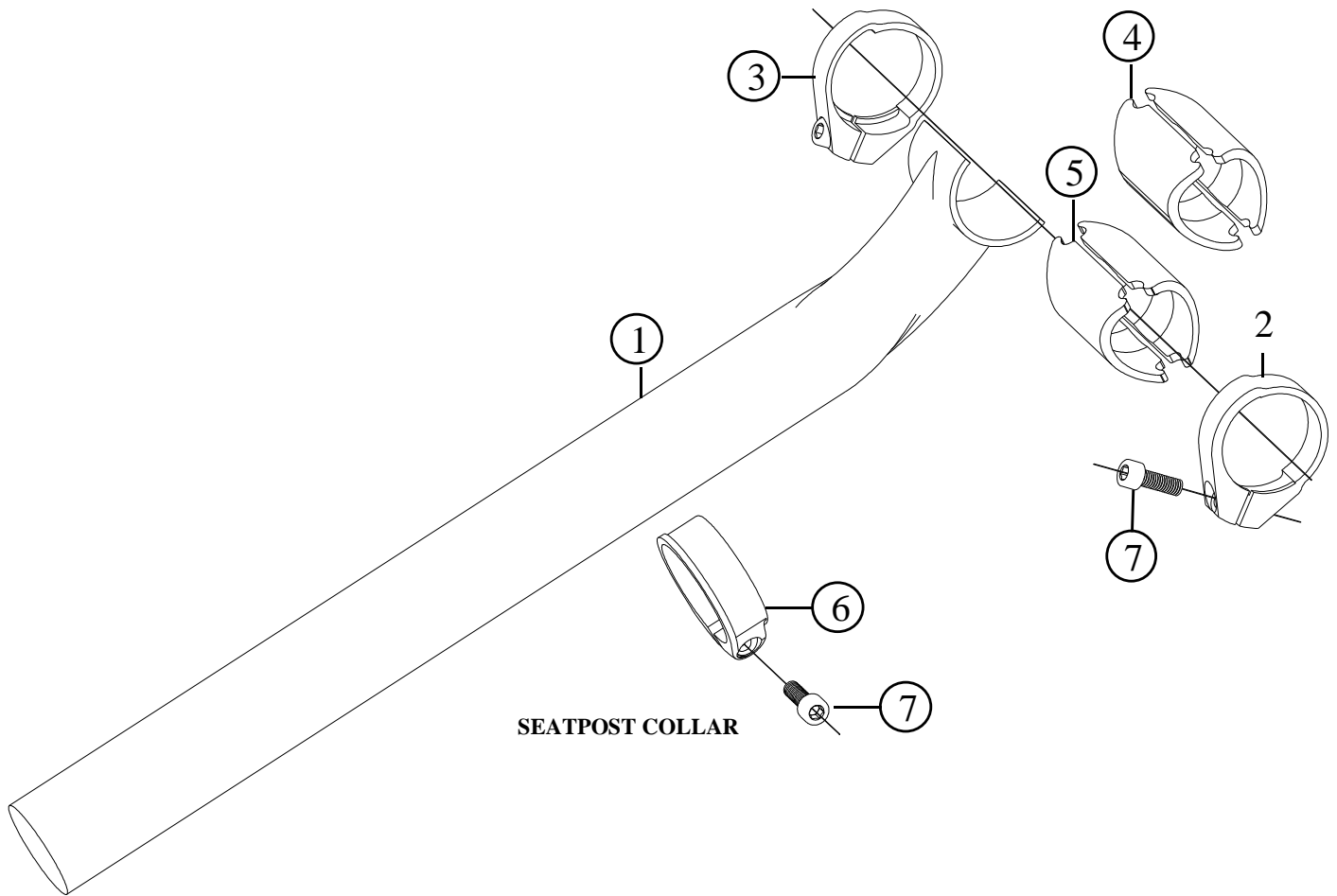
Specifications are subject to change without notice

# FRM

Seatpost for Road & MTB

## ST-R Black Hole - ST-M Black Hole

**2009** Prices for Italian consumers only



SEATPOST COLLAR

Item no.	Code	DESCRIPTION	Price €
1	STMRH	Seatpost 31,6x250mm. Carbon Fibre	260,00
1	STMBH	Seatpost 31,6x350mm. Carbon fibre	265,00
2	STBHCR	Right Hand Clamp. Black anodised	11,90
3	STBHCL	Left Hand Clamp. Black anodised	11,90
4	STBHRS	Craddle for regular railed saddles. Asymmetric. Titan anodised (2pcs)	14,00
5	STBHBHS	Craddle specific for FRM Black Hole Saddle. Black anodised (2pcs)	14,00
6	STAC35B	SC35 Seat Clamp. 34,9 mm dia Black. Without Bolt	11,90
6	STAC35G	SC35 Seat Clamp. 34,9 mm dia Gold W. Without Bolt	11,90
6	STAC35R	SC35 Seat Clamp. 34,9 mm dia Red. Without Bolt	11,90
7	TCC515T	Allen Bolt M5x15 / Titanium – Gold Plated	5,60

Note: modified from Spare Part Manual dated March 2008

Specifications are subject to change without notice

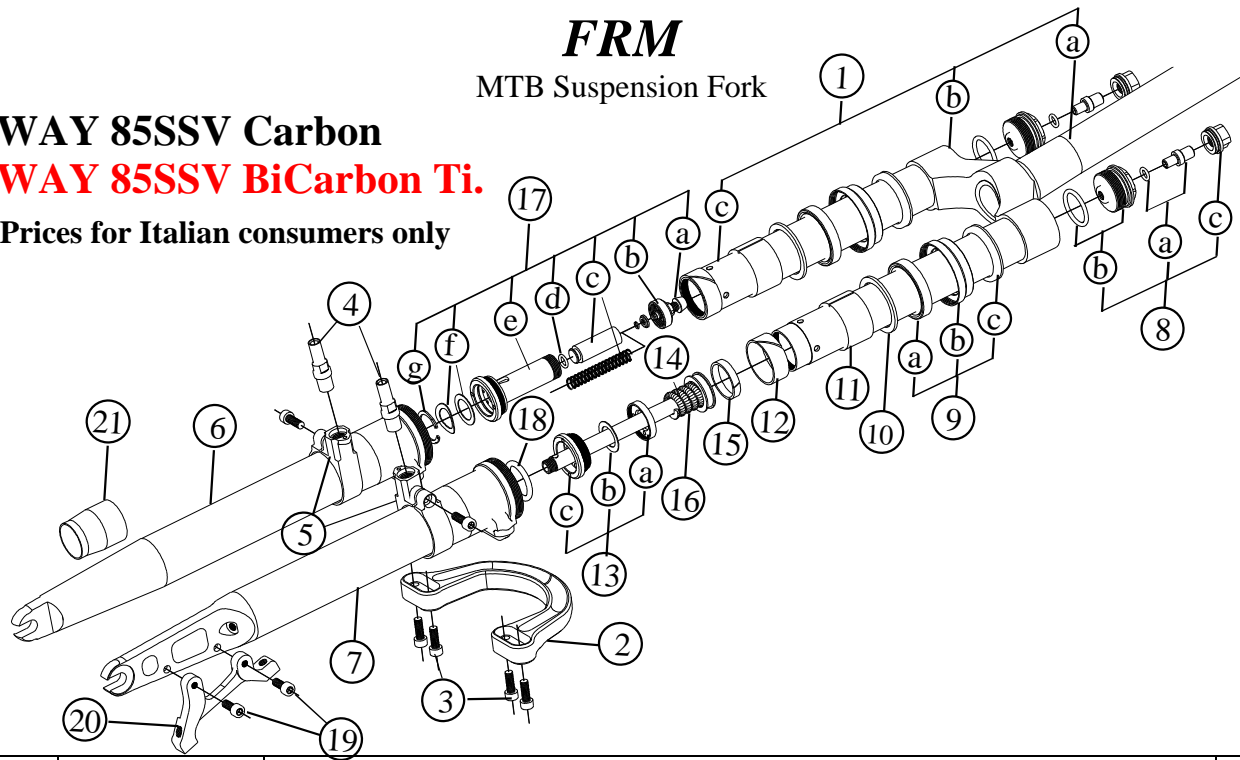
# FRM

## MTB Suspension Fork

### AIR-WAY 85SSV Carbon

### AIR-WAY 85SSV BiCarbon Ti.

### 2009 Prices for Italian consumers only



Item no.	Code	DESCRIPTION	Price €
1	06E30	Crown Assembly / Light Alloy Steerer Tube (85SSV Carbon)	242,50
1	06CE30	Crown Assembly / Carbon Fibre Steerer Tube (85SSV BiCarbon Ti.)	323,50
2	03RBEVO	Reversed Brace / Light Alloy. Black (85SSV Carbon)	71,50
2	03RBEVOR	Reversed Brace / Light Alloy. Red (85SSV BiCarbon Ti.)	73,00
3	TCC512S	Brace Fixing Bolt / Allen M5 x 12mm / Steel (85SSV Carbon)	0,10
3	TCC512Ti	Brace Fixing Bolt / Allen M5 x 12mm / Titanium – Gold Plated (85SSV BiCarbon Ti.)	5,10
4	05S	Brake Stud / Light Alloy M10 x 8mm (V-Brake model only)	4,20
5	05C	Right Hand or Left Hand V-Brake Replaceable Collars (V-Brake model only)	10,50
6	01RBC30EVO	Right Lower Leg / Carbon Fibre	158,50
7	02RBC30EVO	Left Lower Leg / Carbon Fibre	183,00
8	21A30	Air Valve Assembly	11,60
8a	21D	Air Valve & O-Ring 2025 (I.D. 6,07 x 1,78mm)	5,30
8b	21B30	Air Valve Body & O-Ring 128 (I.D. 20,63 x 1,78mm)	6,30
8c	21C	Air Valve Cap & O-Ring 2050 (I.D. 12,42 x 1,78mm)	3,00
9	AW30SA	Seals Assembly	11,50
9b	1730	Oil Seal Lock Ring / Light Alloy	5,40
9a	16N	Oil Seal 30 x 40 x 7mm TTO	3,10
9c	SA30	Dust Seal	3,00
10	15N	Shim / Light Alloy 37,5 x 30 x 2mm	1,60
11	14N	Upper Bushing / Iglodur W300 34 x 30 x 20mm	7,00
12	13N	Lower Bushing / Polyzene 31,75 x 29,1 x 12mm	4,50
13	07SP	Oil Valve Assembly	7,50
13a	07SPA	Oil Valve Cap	1,60
13b	07SPB	Oil Valve Shim—Steel 21,8 x 14,8 x 0,3mm	0,20
13c	07SPC	Oil Valve Body / Synthetic	6,00
Not Visible	18	Damping Adjustment Piston & O-Ring 2012 (I.D.) 2,90x1,78mm)	2,00
14	08SP	Piston/Shaft/Spring Assembly. 128mm long shaft / Light Alloy	16,80
15	11SP	Piston Seal FG 15049 4,9 x 1,5mm	0,50
16	09SP	Negative – Top-Out Spring—Green 18,4 x 25 mm	3,00
17	SSV	SSV Valve Assembly	16,00
17a	SSVA	Bolt in Light Alloy with Spring Plate and Circlip	3,20
17b	SSVB	SSV Valve Cap—Synthetic	1,60
17c	SSVC	SSV Piston and Spring dia. 8,6 x 50 mm	3,70
17d	SSVD	O-Ring 2031	-
17e	SSVE	SSV Body	6,70
17f	SSVF	Steel Shims 21,8 x 14,8 x 0,3mm (One flat – One bent)	0,50
17g	SSVG	Seeger 22V1	0,10
18	10A	Bottom-Out Damper / O-Ring	0,50
19	24A	Disc Mount Fixing Bolt / Allen M5 x 12mm. Steel (85SSV Carbon)	0,10
19	TCC512Ti	Disc Mount Fixing Bolt / Allen M5 x 12mm. Titanium – Gold Plated (85SSV BiCarbon Ti.)	5,10
20	AW1	Post-Mount AW1 Disc Brake Mount for 160mm rotors / Light Alloy	19,10
21	OST30	Oil Seal Tool for 30 mm stanchions	4,20
		Motul Fork Oil Factory Line – Light 5W 200 cc	11,80
		Motul Fork Oil Factory Line – Light 5W 1.000 cc	25,40

Note: modified from Spare Part Manual dated March 2008

Specifications are subject to change without notice

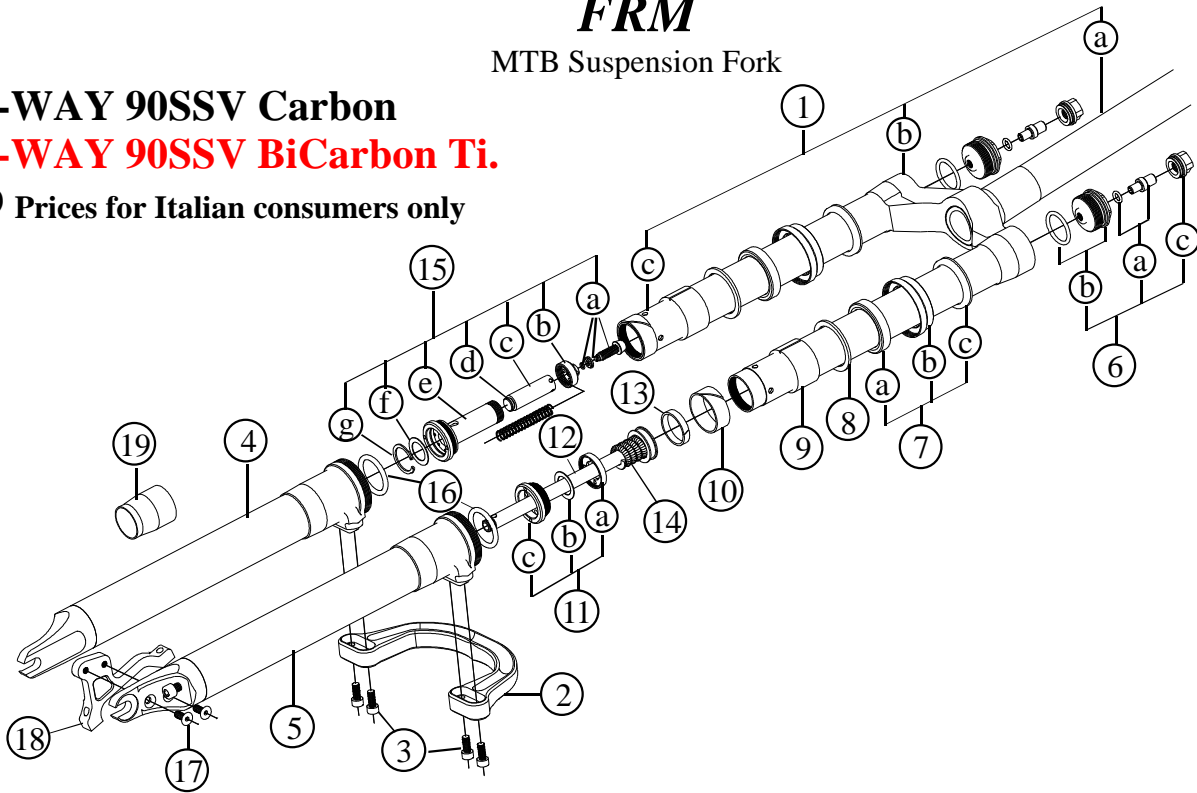
# FRM

## MTB Suspension Fork

### AIR-WAY 90SSV Carbon

### AIR-WAY 90SSV BiCarbon Ti.

2009 Prices for Italian consumers only



Item no.	Code	DESCRIPTION	Price €
1	06M30	Crown Assembly / Light Alloy Steerer Tube (90SSV Carbon)	283,00
1	06CM30	Crown Assembly / Carbon Fibre Steerer Tube (90SSV BiCarbon Ti.)	369,00
2	03N06	Reversed Brace / Light Alloy. Black (90SSV Carbon)	71,50
2	03N06R	Reversed Brace / Light Alloy (90SSV BiCarbon Ti.)	73,00
3	04	Brace Fixing Bolt / Allen M5x12mm / Steel (90SSV Carbon)	0,10
3	04T	Brace Fixing Bolt / Allen M5x12mm / Titanium – Gold Plated (90SSV BiCarbon Ti.)	5,10
4	01CN07	Right Lower Leg / Carbon Fibre	194,00
5	02CN07	Left Lower Leg / Carbon Fibre (Post-Mount dropout)	232,00
6	21A30	Air Valve Assembly	11,60
6a	21D	Air Valve & O-Ring 2025 (I.D. 6,07 x 1,78mm)	5,30
6b	21B30	Air Valve Body & O-Ring 128 (I.D. 20,63 x 1,78mm)	6,30
6c	21C	Air Valve Cap & O-Ring 2050 (I.D. 12,42 x 1,78mm)	3,00
7	AW30SA	Seals Assembly	11,50
7b	1730	Oil Seal Lock Ring / Light Alloy	5,40
7a	16N	Oil Seal 30 x 40 x 7mm TTO	3,10
7c	SA30	Dust Seal	3,00
8	15N	Shim / Light Alloy 37,5 x 30 x 2mm	1,60
9	14N	Upper Bushing / Iglodur W300 34 x 30 x 20mm	7,00
10	13N	Lower Bushing / Polyzene 31,75 x 29,1 x 12mm	4,50
11	07SP	Oil Valve Assembly	7,50
11a	07SPA	Oil Valve Cap	1,60
11b	07SPB	Oil Valve Shim—Steel 21,8 x 14,8 x 0,3mm	0,20
11c	07SPC	Oil Valve Body / Synthetic	6,00
Not Visible	18	Damping Adjustment Piston & O-Ring 2012 (I.D.) 2,90x1,78mm)	2,00
12	08SP	Piston/Shaft/Spring Assembly. 128mm long shaft / Light Alloy	16,80
13	11SP	Piston Seal FG 15049 4,9 x 1,5mm	0,50
14	09SP	Negative – Top-Out Spring—Green 18,4 x 25 mm	3,00
15	SSV	SSV Valve Assembly	16,00
15a	SSVA	Bolt in Light Alloy with Spring Plate and Circlip	3,20
15b	SSVB	SSV Valve Cap—Synthetic	1,60
15c	SSVC	SSV Piston and Spring dia. 8,6 x 50 mm	3,70
15d	SSVD	O-Ring 2031	-
15e	SSVE	SSV Body	6,70
15f	SSVF	Steel Shims 21,8 x 14,8 x 0,3mm (One flat – One bent)	0,50
15g	SSVG	Seeger 22V1	0,10
16	10A	Bottom-Out Damper / O-Ring	0,50
17	24A	Disc Mount Fixing Bolt / Cone Head M5. Steel	0,20
18	AW2	Post-Mount AW2 Disc Brake Mount for 160mm rotors/ Light Alloy	19,10
19	OST30	Oil Seal Tool for 30 mm stanchions	4,20
		Motul Fork Oil Factory Line – Light 5W 200 cc	11,80
		Motul Fork Oil Factory Line – Light 5W 1.000 cc	25,40

Note: modified from Spare Part Manual dated March 2008

Specifications are subject to change without notice

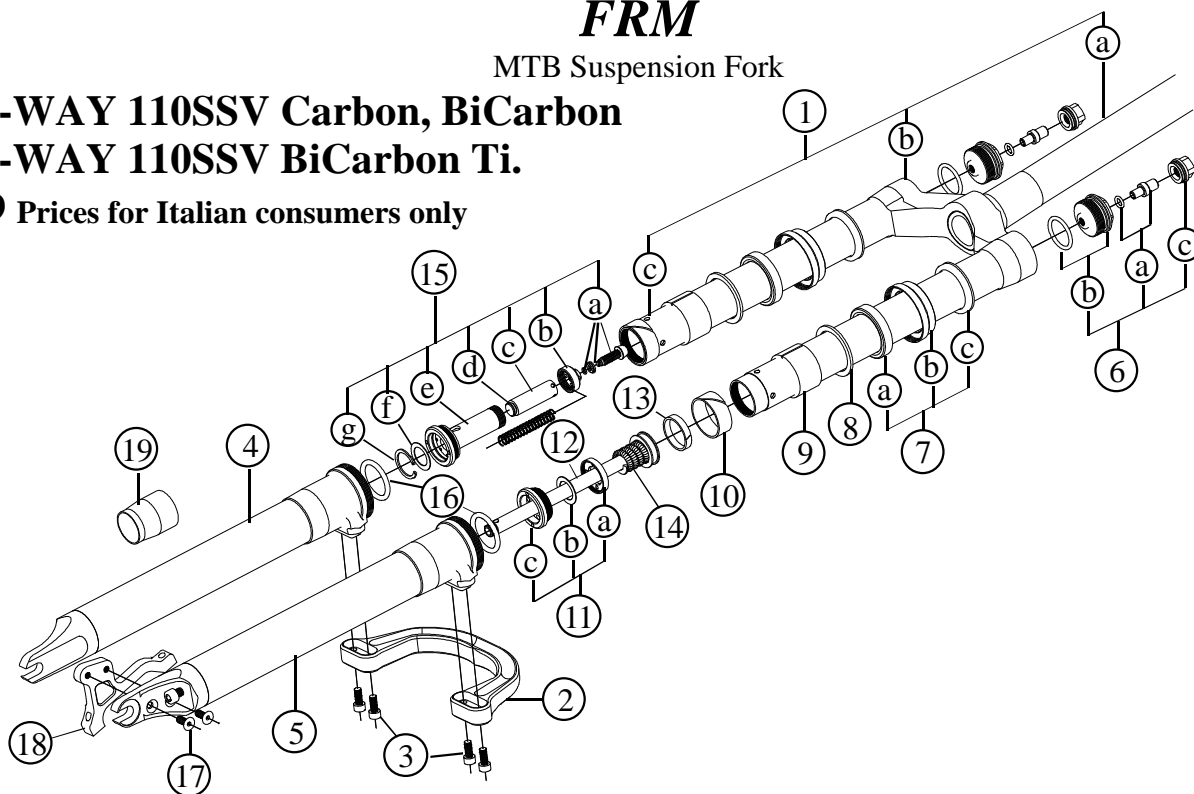
# FRM

## MTB Suspension Fork

**AIR-WAY 110SSV Carbon, BiCarbon**

**AIR-WAY 110SSV BiCarbon Ti.**

**2009 Prices for Italian consumers only**



Item no.	Code	DESCRIPTION	Price €
1	06N30	Crown Assembly / Light Alloy Steerer Tube (110SSV Carbon)	283,00
1	06CN30	Crown Assembly / Carbon Fibre Steerer Tube (110SSV BiCarbon Ti.)	369,00
2	03N06	Reversed Brace / Light Alloy. Black (110SSV Carbon)	71,50
2	03N06R	Reversed Brace / Light Alloy (110SSV BiCarbon Ti.)	73,00
3	04	Brace Fixing Bolt / Allen M5x12mm / Steel (110SSV Carbon)	0,10
3	04T	Brace Fixing Bolt / Allen M5x12mm / Titanium – Gold Plated (110SSV BiCarbon Ti.)	5,10
4	01CN07	Right Lower Leg / Carbon Fibre	194,00
5	02CN07	Left Lower Leg / Carbon Fibre (Post-Mount dropout)	232,00
6	21A30	Air Valve Assembly	11,60
6a	21D	Air Valve & O-Ring 2025 (I.D. 6,07 x 1,78mm)	5,30
6b	21B30	Air Valve Body & O-Ring 128 (I.D. 20,63 x 1,78mm)	6,30
6c	21C	Air Valve Cap & O-Ring 2050 (I.D. 12,42 x 1,78mm)	3,00
7	AW30SA	Seals Assembly	11,50
7b	1730	Oil Seal Lock Ring / Light Alloy	5,40
7a	16N	Oil Seal 30x40x7 mm TTO	3,10
7c	SA30	Dust Seal	3,00
8	15N	Shim / Light Alloy 37,5x30x2 mm	1,60
9	14N	Upper Bushing / Iglodur W300 34x30x20 mm	7,00
10	13N	Lower Bushing / Polyzene 31,75x29,1x12 mm	4,50
11	07SP	Oil Valve Assembly	7,50
11a	07SPA	Oil Valve Cap	1,60
11b	07SPB	Oil Valve Shim—Steel 21,8x14,8x0,3mm	0,20
11c	07SPC	Oil Valve Body / Synthetic	6,00
Not Visible	18	Damping Adjustment Piston & O-Ring 2012 (I.D.) 2,90x1,78mm)	2,00
12	08NSP	Piston/Shaft/Spring Assembly. 151mm long Shaft / Light Alloy	16,80
12	11SP	Piston Seal FG 15049 4,9x1,5 mm	0,50
14	09SP	Negative – Top-Out Spring—Green 18,4 x 25 mm	3,00
15	SSV	SSV Valve Assembly	16,00
15a	SSVA	Bolt in Light Alloy with Spring Plate and Circlip	3,20
15b	SSVB	SSV Valve Cap—Synthetic	1,60
15c	SSVC	SSV Piston and Spring dia. 8,6x50 mm	3,70
15d	SSVD	O-Ring 2031	-
15e	SSVE	SSV Body	6,70
15f	SSVF	Steel Shims 21,8x14,8x0,3 mm (One flat – One bent)	0,50
15g	SSVG	Seeger 22V1	0,10
16	10A	Bottom-Out Damper / O-Ring	0,50
17	24A	Disc Mount Fixing Bolt / Cone Head M5 x 12mm	0,20
18	AW3	Post-Mount AW3 Disc Brake Mount for 180mm rotors/ Light Alloy	19,10
19	OST30	Oil Seal Tool for 30 mm stanchions	4,20
		Motul Fork Oil Factory Line – Light 5W 200 cc	11,80
		Motul Fork Oil Factory Line – Light 5W 1.000 cc	25,40

Note: modified from Spare Part Manual dated March 2008

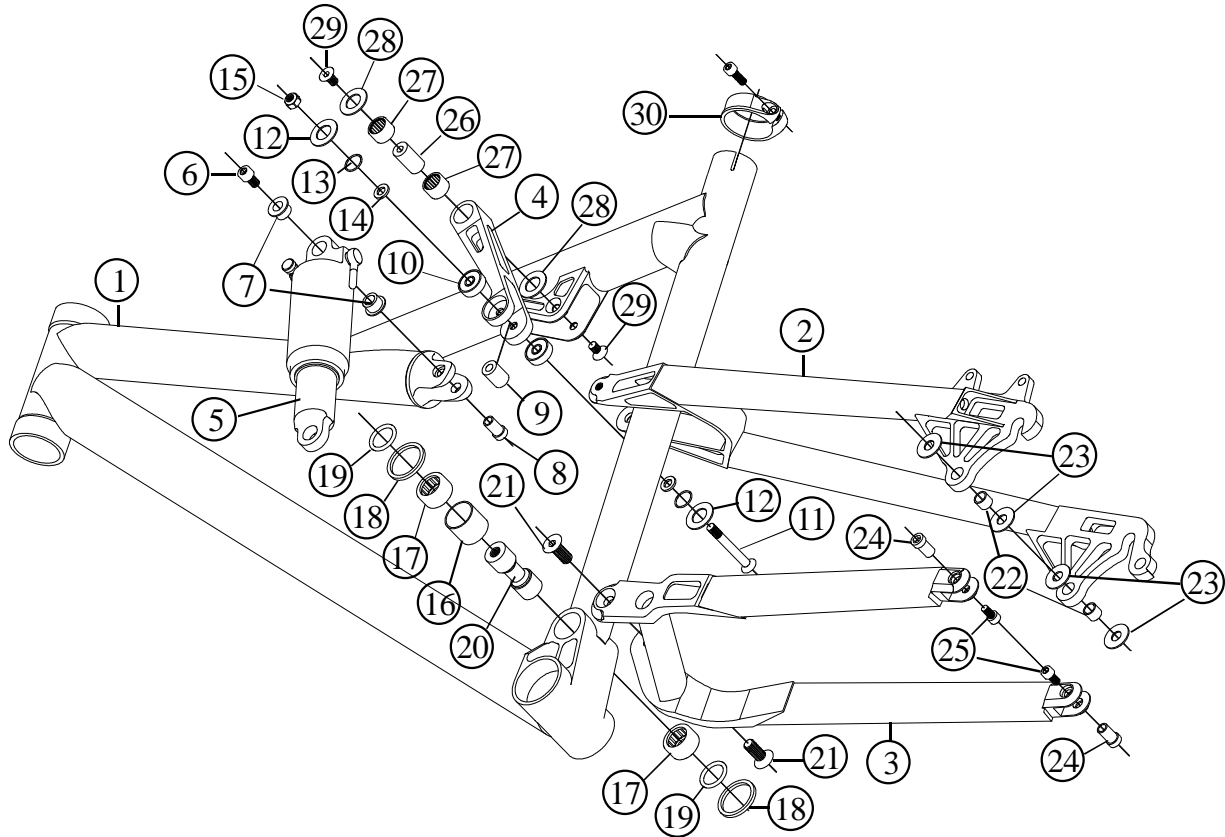
Specifications are subject to change without notice

# FRM

Suspension Frame

12 HP

2009 Prices for Italian consumers only



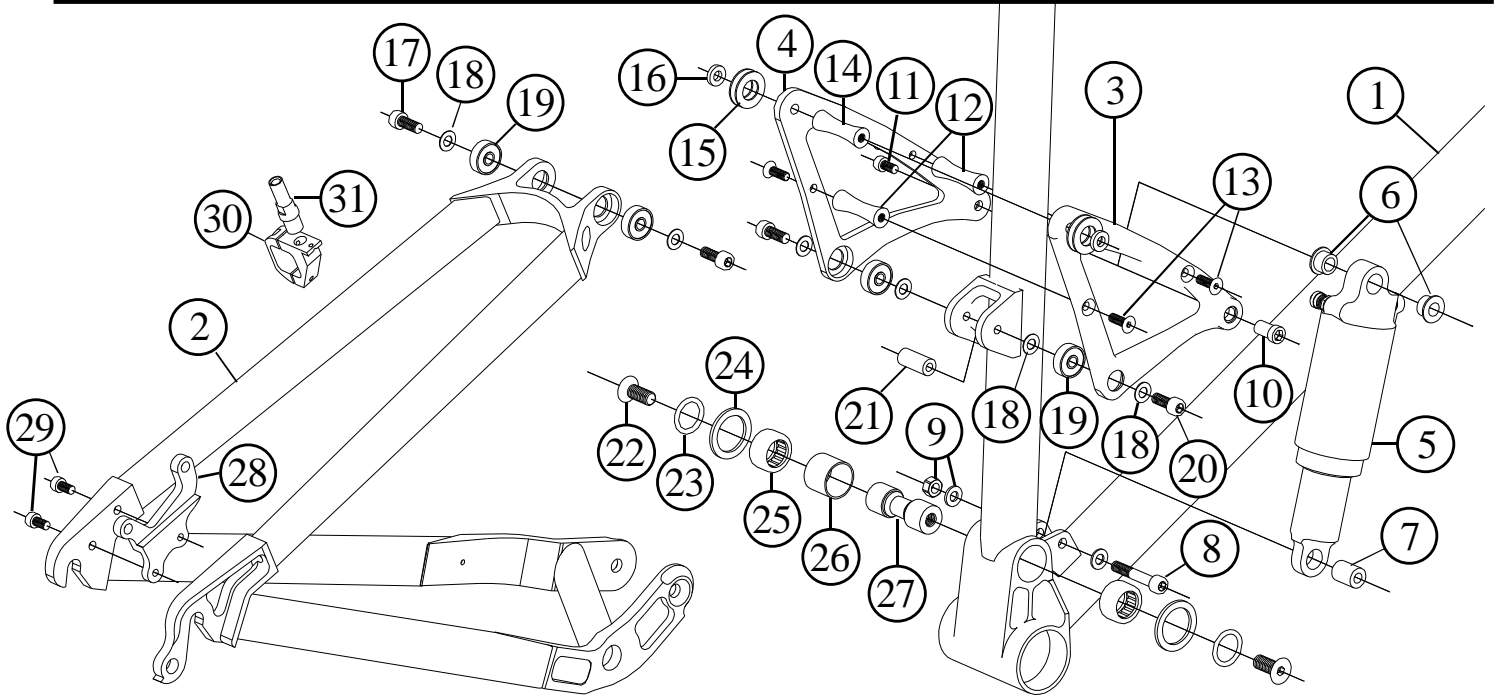
Item no.	Code	DESCRIPTION	Price €
1	12HPMF06	Main Frame Black anodised (17,5" -19" - 20,5")	620,00
2	SSBAP03	Seat-Stay Assembly	210,00
3	CSBAP03	Chain-Stay Assembly	210,00
4	12HPSL06	Swing Link (Gold anodised)	31,00
5	XFO2P165	Rear Shock Rock Shox Monarch Stable Platform (165 mm eye to eye)	253,80
6	TCE610	Allen Bolt M6 x 10 mm	0,15
7	UESBAXF	Spacer of Shock Upper Eye (2 pcs) Specify Shock Type	1,50 pc
8	HLP03	Axle of the Shock Upper Eye (Light Alloy)	3,20
9	LEAXF	Axle of Shock Lower Eye. Specify Shock type	1,50
10	BB1966	Ball Bearing 19x6x62RS (2 pcs)	3,00 pc
11	CL205	Cone-Headed Bolt M6x55mm (Non Commercial - Special Design)	6,80
12	WD022	Plastic Washer dia. 22 mm (2 pcs)	0,70 pc
13	OR12085	O-Ring 11,7x0,85 (2pcs)	0,10 pc
14	SW1215	Steel Washer 12x1,5 mm (6pcs)	0,05 pc
15	SNM6	Self-Locking nut M6	0,15
16	MPRS	Main Pivot Bearings Spacer. Light Alloy	1,20
17	MPR96	Main Pivot Needle Bearing (2pcs)	6,50 pc
18	WD030	Plastic Washer dia. 30 mm (2pcs)	0,80 pc
19	ORD22	O-Ring dia. 22 mm (2pcs)	0,14 pc
20	MPA97	Main Pivot Axle (Light Alloy with Steel Sleeves)	10,00
21	TSE820	Cone-Headed Bolt M8x20 (2 pcs)	0,25 pc
22	HLB96	DU Horst Link Bushing (2 pcs)	0,70 pc
23	WD018	Plastic Washer dia. 18 mm (4 pcs)	0,70 pc
24	HLP96	Horst Link Axle (2pcs)	3,20 pc
25	TCE610	Allen Bolt M6x10 (2 pcs)	0,14 pc
26	RAA96	Rocker Arm Axle (hardened steel )	4,00 pc
27	RAR96	Rocker Arm Needle Bearing (2pcs)	5,00 pc
28	WD022	Plastic Washer dia. 22 mm (2pcs)	0,70 pc
29	TSE610	Cone-Headed Bolt M6x10 mm (2 pcs)	0,15 pc
30	STAC32R	SC32 Seat Clamp. 31,6 mm dia Red. With steel bolt	12,00
		Decals Kit (Metallic Red)	27,00

Specifications are subject to change without notice

# FRM

## 10HP Pro & 10HP Team

2009 Prices for Italian consumers only



Item no.	Code	DESCRIPTION	Price €
1	HPMF03	Main Frame Titan anodised (17,5" -19" - 20,5")	600,00
2	HPS03	One-Piece Suspension	420,00
3	HPRAR04	Rocker Arm Right Plate (Black Anodised)	22,00
4	HPRAL04	Rocker Arm Left Plate (Black Anodised)	22,00
5	XFO2P165	Rear Shock Rock Shox Monarch Stable Platform (165 mm eye to eye) Original equipment of 10HP	253,80
5	HRV200S	Rear Shock DT XR Carbon (165 mm eye to eye) Original equipment of 10HP Team	649,40
6	UES10HP	Spacer of the Shock Upper Eye (2 pcs) Specify shock type	1,50 pc
7	LEAXF	Axle of Shock Lower Eye - Specify shock type	1,50
8	TCE635	Allen Bolt M6 x 35 & Washer	0,30
8	TCE635Ti.	Allen Bolt M6 x 35 Titanium. Original equipment of 10HP Team	12,60
9	SNM6	Self-Locking nut M6 & Washer	0,15
10	HLP03	Axle of the Shock Upper Eye (Light Alloy)	3,20
11	TCE610	Allen Bolt M6x10	0,15
11	TCE610E	Allen Bolt M6x10 Light Alloy. Original equipment of 10HP Team	1,70
12	HPRS5	Fuse-Shaped Spacer M5 (2pcs)	3,70 pc
13	TSE515	Cone-Headed Bolt M5x15 (4 pcs)	0,15 pc
14	HPRS6	Fuse-Shaped Spacer M6	3,70
15	WD022	Plastic Washer dia. 22 mm (4 pcs)	0,70 pc
16	BW1245	Brass Washer 12x4,5 mm (2pcs)	0,50 pc
17	TCE625	Allen Bolt M6x25 (2pcs)	0,25 pc
17	TCE625Ti.	Allen Bolt M6x25 Light Alloy (2pcs). Original equipment of 10HP Team	2,30 pc
18	SW1215	Steel Washer 12x1,5 mm (6pcs)	0,05 pc
19	BB1966	Ball Bearing 19x6x62RS (4pcs)	2,50 pc
20	TCE620	Allen Bolt M6x20 (2pcs)	0,20 pc
20	TCE620Ti.	Allen Bolt M6x20 Light Alloy (2pcs). Original equipment of 10HP Team	2,00 pc
21	HPRAS6	Light Alloy Rod M6	2,50
22	TSE820	Cone-Headed Bolt M8x20 (2 pcs)	0,25 pc
22	TSE820Ti.	Cone-Headed Bolt M8x20 Light Alloy (2 pcs). Original equipment of 10HP Team	3,50 pc
23	ORD22	O-Ring dia. 22 mm (2pcs)	0,14 pc
24	WD030	Plastic Washer dia. 30 mm (2pcs)	0,80 pc
25	MPR96	Main Pivot Needle Bearing (2pcs)	6,50 pc
26	MPRS	Main Pivot Bearings Spacer. Light Alloy	1,20
27	MPA97	Main Pivot Axle (Light alloy with steel sleeves)	10,00
28	DISC96	Disc Brake Adaptor	20,00
29	TCE512	Allen Bolt M5 x12 mm Steel (2pcs)	0,10 pc
29	TCC512Ti	Allen Bolt M5 x12 mm Titanium (2pcs). Original equipment of 10HP Team	6,10 pc
30	CB99	V-Brake Collar (2pcs)	15,00 pc
31	ACS96	Brake Stud in Light Alloy (M8)	4,20 pc

Specifications are subject to change without notice

# ***FRM***

**Manufactured and distributed by:**

**The Bike Shop**

**Via Mattei 18/a**

**48025 Riolo Terme (RA)**

**Italy**

**tel. +39 0546 70310**

**fax +39 0546 74623**

**e-mail: [info@frmbike.com](mailto:info@frmbike.com)**

**[www.frmbike.com](http://www.frmbike.com)**