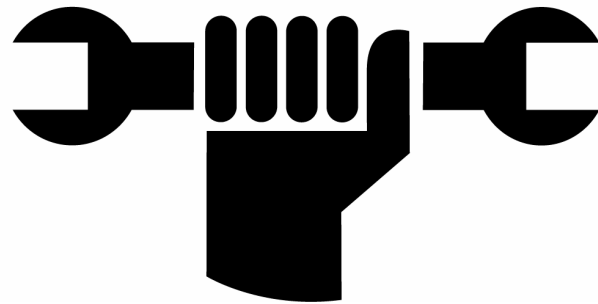


FRM



2008

March Revision

SPARE PART

MANUAL

&

PRICE LIST

Prezzi validi solo per l'Italia

INDEX

CRANKSETS

CU2-M27 Integral (MTB)	Modified	Page 3
CU2-M18NS Integral (MTB)		Page 4

FRONT HUBS

FL-R Team CA & HCB CA (Road)		Page 5
SP-R Team (Road)		Page 6
SP-R Team CA & HCB CA (Road)		Page 7
FL-M Team Disc (MTB)	Modified	Page 8
FL-M Team Lefty Disc (MTB)		Page 9
SP-M Team Disc (MTB)	Modified	Page 10
FL-R Pro (Road)& FL-M Pro (MTB)		Page 11
FL-M Pro Disc (MTB)		Page 12

REAR HUBS

FL-R Team CA (Road)		
FL-R Team HCB CA (Road)		Page 13
SP-R Team (Road)	Modified	Page 14
SP-R Team CA & HCB CA (Road)		Page 15
FL-M Team Disc (MTB)	Modified	Page 16
SP-M Team Disc (MTB)	Modified	Page 17
FL-R Pro (Road)		
FL-M Pro (MTB)		Page 18
FL-M Pro Disc (MTB)		Page 19

QUICK RELEASE

TEAM, PRO, TEAM SL	New	Page 20
---------------------------	------------	---------

HEADSET

C-SET & C-SET Team 1 1/8"		Page 21
I-SET & I-SET Team (Integrated)		Page 22

STEMS

WEB-STEM CF & CF Ti.		
WEB-STEM 32 & 32 Ti.		
LEFTY WEB-STEM CF & CF Ti.		Page 23
BLACK HOLE		Page 24

DISC BRAKES

DBR300 Caliper	New	
DBR250 Caliper	New	Page 25
DBR 300 Brake lever	New	
DBR 250 Brake lever	New	Page 26

DISC ROTORS

UNIROTOR Pro 160		
UNIROTOR Pro 180		
UNIROTOR Team 160		Page 27

ROAD BRAKES

CL2		
CL2 Ti.		
CL2 Team		Page 28

SEATPOSTS & SEATCOLLARS

ST-R21 Carbon		
ST-R21 Carbon Ti.		
ST-M21 Carbon		
ST-M21 Carbon Ti.		Page 29
ST-M10 – ST-M10 OS	New	
ST-M10 Ti. – ST-M10 OS Ti.	New	
ST-M20 Carbon Ti		Page 30
ST-R & M Black Hole		Page 31

SUSPENSION FORKS

AIR-WAY 85SSV Evo Carbon		
AIR-WAY 85SSV Evo BiCarbon Ti.		
AIR-WAY 85 SSV Evo TriCarbon Ti.		Page 32
AIR-WAY 90SSV Carbon		
AIR-WAY 90SSV BiCarbon		
AIR-WAY 90SSV BiCarbon Ti		Page 33
AIR-WAY 110 SSV Carbon		
AIR-WAY 110 SSV BiCarbon		
AIR-WAY 110 SSV BiCarbon Ti.		Page 34

SUSPENSION FRAMES

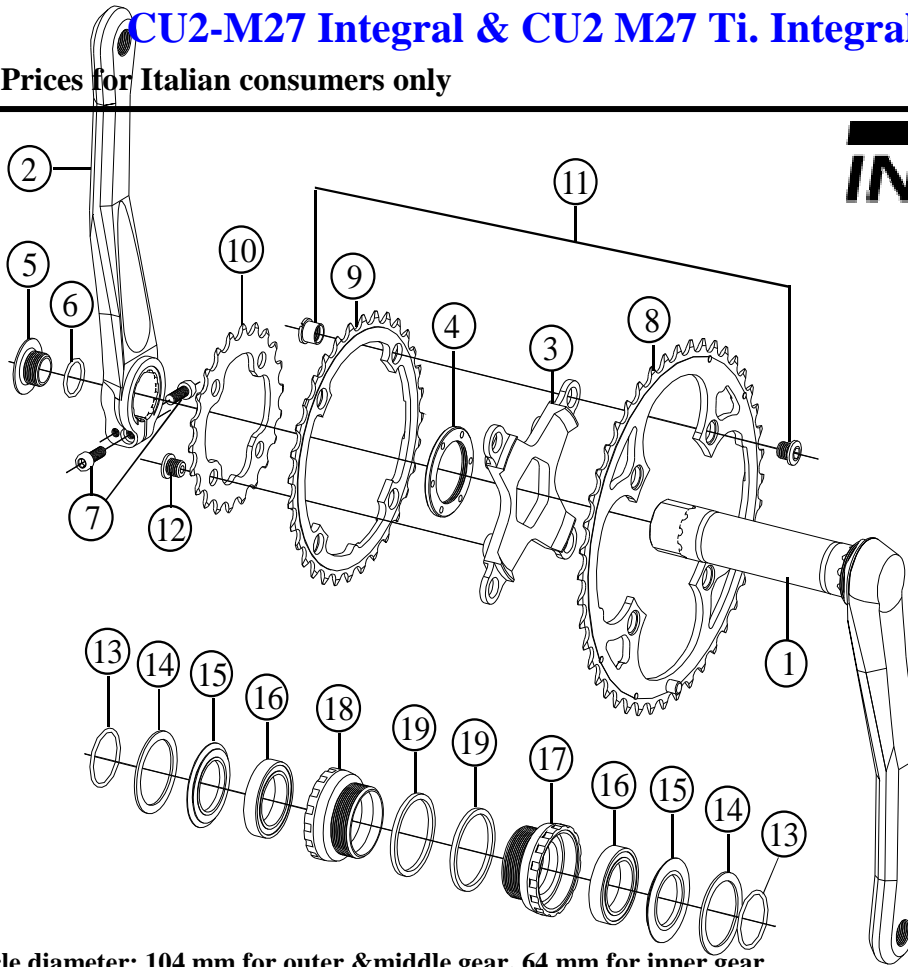
12HP		Page 35
10HP		Page 36

FRM

Front Crankset for MTB

CU2-M27 Integral & CU2 M27 Ti. Integral - Modified

2008 Prices for Italian consumers only



Bolt circle diameter: 104 mm for outer & middle gear, 64 mm for inner gear

Item no.	Code	DESCRIPTION	Price Euro	INTERCHANGEABILITY			
				CU2-M 18NS Integral	CU2-M 2X9 Integral	CU2-M TR ISIS	CU2-M 2x9 ISIS
1	CU23R	Integral Right Arm with Axle 170-172,5-175 mm - Black	160,00	A	A	X	X
2	CU24L	Clamp Type Left Arm 170-172,5-175 mm - Black	110,00	A	A	X	X
3	CU25M	4 Arm Spider for triple rings (110/64 mm B.C.D.) Black or Gold	73,00	X	B	X	X
4	CU006	Spider Lock Ring	5,00	A	A	A	A
5	CU18	Bolt for Play Adjustment	3,00	A	A	X	X
6	OR2056	O-Ring 2056 (I.D. 14 x 1,78 mm)	0,15	A	A	X	X
7	TCC515/512S	1 Allen Bolt M5x15 and 1 Allen bolt M5x12 / Steel	0,15	A	A	X	X
7	TCC515Ti TCC512Ti	1 Allen Bolt M5x15 and 1 Allen bolt M5x12 / Titanium	6,10 6,10	A	A	X	X
8	CU1844O	Chain Ring FRM Pro 44T (104 mm B.C.D.)	50,70	X	X	A	X
8	CU1842O	Chain Ring FRM Pro 42T (104 mm B.C.D.)	50,70	X	X	A	X
9	CU1832M	Chain Ring FRM Pro 32T (104 mm B.C.D.)	31,30	X	X	A	X
10	CU2122I	Chain Ring FRM Pro 22T (64 mm B.C.D.)	16,30	X	X	A	X
11	CU004	Chainring Fixing Bolt & Nut (each)	3,50	X	A	A	A
10	CU004G	Chainring Fixing Bolt & Nut Gold (each)	3,80	X	A	A	A
12	CU005	Inner Gear Fixing Bolt Unit (4 pcs)	2,0	X	X	A	X
13	OR2093	O-Ring 2093 (I.D. 23,52 x 1,78 mm)	0,15	A	A	X	X
14	CU19BA	Rubber Seal	0,50	A	B	X	X
15	CU19B	Dust Shield for Rubber Seal (plastic)	2,00	A	B	X	X
16	BB37257RS	Bearing 6805 2RS 37x25x7 mm (Red Seal for heavy duty)	15,70	A	A	X	X
17	CU20BL	Left hand Cup (BC 1,37x24T) English Thread / Shell Width 68 mm	14,50	A	B	X	X
18	CU20BR	Right hand Cup (BC 1,37x24T) English Thread / Shell Width 68 mm	14,50	A	B	X	X
19	CU22	Spacer, 2,5 mm thick. DO NOT USE WITH 73 mm BB SHELLS	1,00	A	A	X	X
	CU26	Tool for Bottom Bracket Cups	18,00	A	A	X	X

Note: Modified from previous Spare Part Manual

A: Same parts

B: Parts are usable, but different in material, appearance, finish, size.

X: Non-interchangeable

Specifications are subject to change without notice

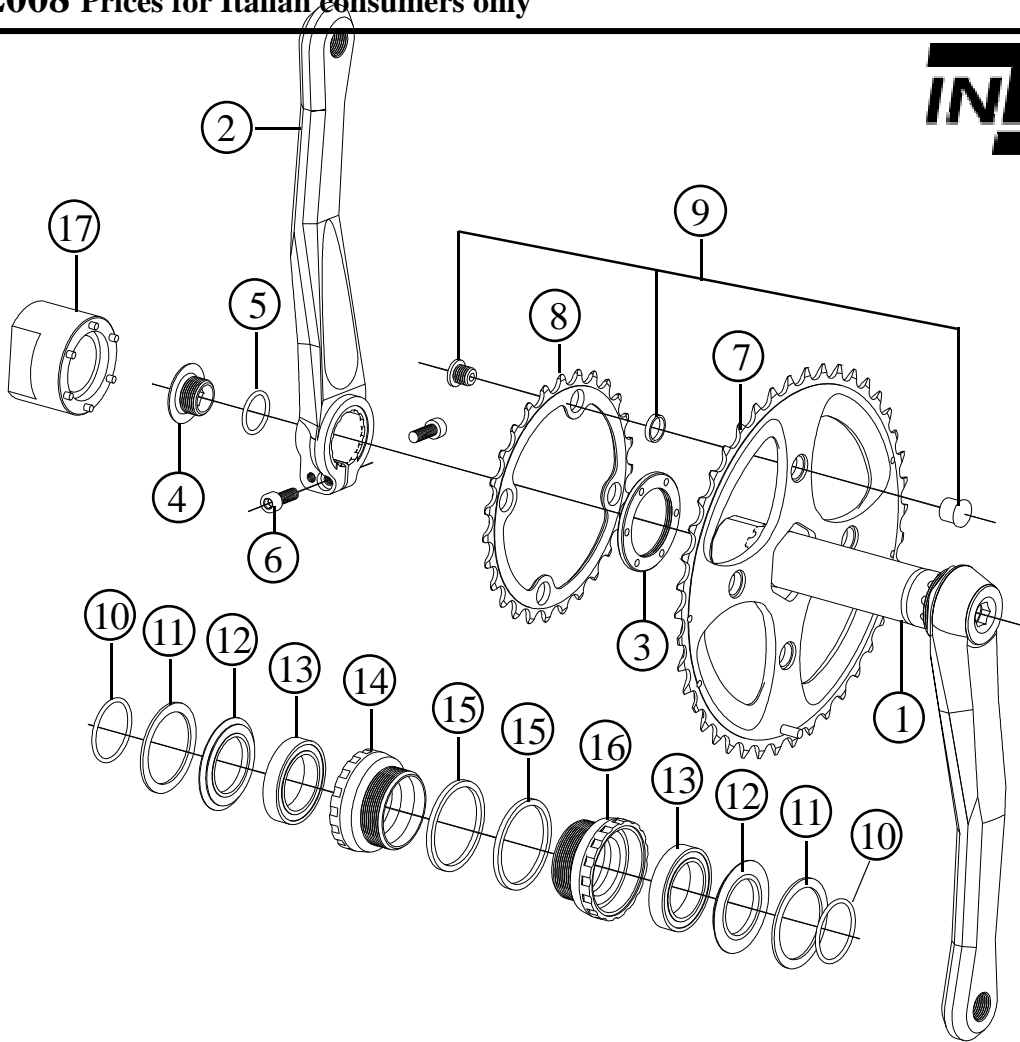
FRM

Front Crankset for MTB

CU2-M18NS & CU2-M18NS Ti. Integral

2008 Prices for Italian consumers only

INTEGRAL DRIVE



Item no.	Code	DESCRIPTION	Price Euro	INTERCHANGEABILITY			
				CU2-M 27 Integral	CU2-M 2X9 Integral	CU2-M TR ISIS	CU2-M 2x9 ISIS
1	CU23R	Integral Right Arm with Axle 170-172,5-175 mm – Black	160,00	A	A	X	X
2	CU24L	Clamp Type Left Arm 170-172,5-175 mm - Black	110,00	A	A	X	X
3	CU006	Lock Ring	5,00	A	A	A	A
4	CU18	Bolt for Play Adjustment	3,00	A	A	X	X
5	OR2056	O-Ring 2056 (I.D. 14 x 1,78 mm)	0,15	A	A	X	X
6	TCC515/510S	1 Allen Bolt M5x15 and 1 Allen bolt M5x10 / Steel	0,15	A	A	X	X
6	TCC515Ti TCC512Ti	1 Allen Bolt M5x15 and 1 Allen bolt M5x12 / Titanium	6,10 6,10	A	A	X	X
7	CU42NS	Chain Ring FRM NS 42T (compatible with older FRM Integral cranksets)	74,00	X	X	X	X
8	CU27NS	Chain Ring FRM Pro 27T (compatible with 42NS ring only)	34,00	X	X	X	X
9	CUNSFb	Kit NS Chainring Bolt, Nut and Spacer (4 sets)	14,50	X	X	X	X
10	OR2093	O-Ring 2093 (I.D. 23,52 x 1,78 mm)	0,15	A	A	X	X
11	CU19BA	Rubber Seal	0,50	B	B	X	X
12	CU19B	Dust Shield for Rubber Seal (plastic)	2,00	B	B	X	X
13	BB37257RS	Bearing 6805 2RS 37x25x7 mm (Red Seal for heavy duty)	15,70	A	A	X	X
14	CU20BR	Right hand Cup (BC 1,37x24T) English Thread / Shell Width 68 mm	14,50	B	B	X	X
15	CU22	Spacer 2,5 mm thick. DO NOT USE WITH 73 mm BB SHELLS	1,00	A	A	X	X
16	CU20BL	Left hand Cup (BC 1,37x24T) English Thread / Shell Width 68 mm	14,50	B	B	X	X
17	NSTOOL	Tool to disassemble the Lock Ring	18,20	X	X	X	X

Note: Modified from previous Spare Part Manual

A: Same parts

B: Parts are usable, but different in material, appearance, finish, size.

X: Non-interchangeable

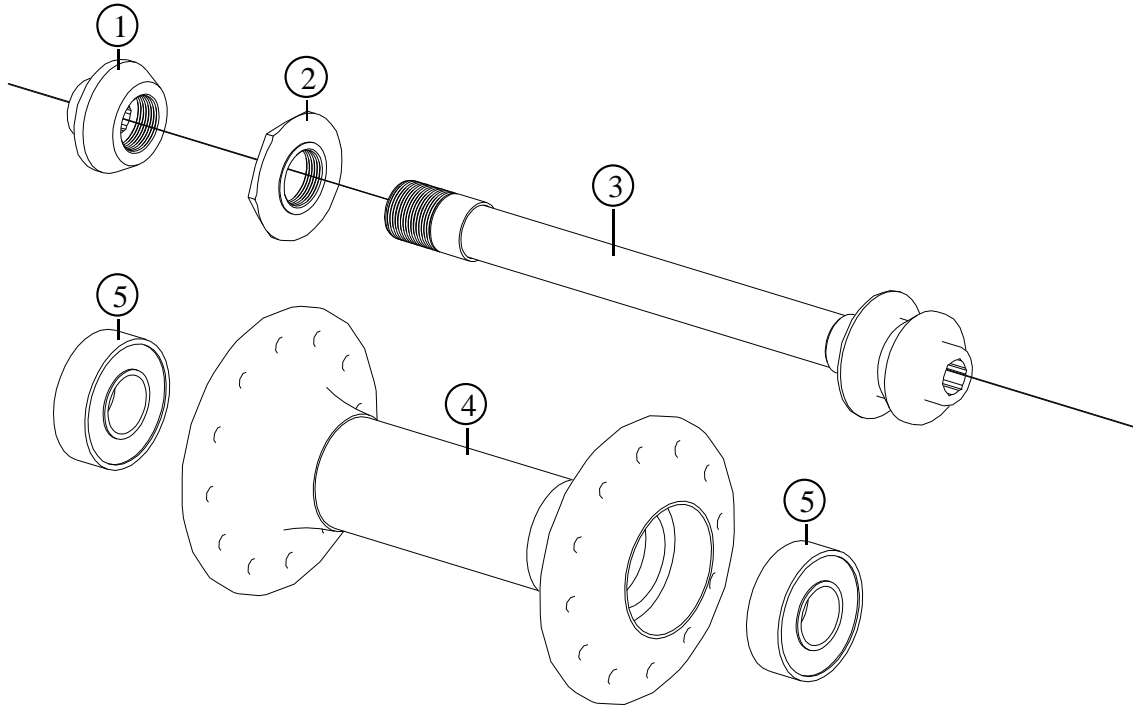
Specifications are subject to change without notice

FRM

Front Hub for Road Only

FL-R Team CA & FL-R Team CA HCB

2008 Prices for Italian consumers only



ALSO SUPPLIED ON WHEELSET: FL-R21 Aerolite, FL-R24 Aerolite Carbon Zipp and HCB versions

Item no.	Code	DESCRIPTION	Price Euro	INTERCHANGEABILITY				
				FL-R Team CA HCB	FL-M Team/ Team Disc	FL-M Pro/ Pro Disc	SP-R Team CA	SP-R Team
1	FH003CA	Lock Nut for carbon fibre axle / Light alloy	3,50	X	X	X	A	X
2	FH02CCA	Inner Nut for carbon fibre axle / Light alloy	3,00	X	X	X	A	X
3	FH04CCA	Carbon Fibre Axle with bonded light alloy ends	22,00	X	X	X	A	X
4	FH06B20G	Hub Body 20 h: Alloy Flanges (Gold)+Carbon Fibre Centre	70,00	X	X	X	X	X
4	FH07B24G	Hub Body 24 h: Alloy Flanges (Gold)+Carbon Fibre Centre	70,00	X	X	X	X	X
4	FH07B28G	Hub Body 28 h: Alloy Flanges (Gold)+Carbon Fibre Centre	70,00	X	X	X	X	X
4	FH07B32G	Hub Body 32 h: Alloy Flanges (Gold)+Carbon Fibre Centre	70,00	X	X	X	X	X
4	FH06B20S	Hub Body 20 h: Alloy Flanges (Silver)+Carbon Fibre Cent.	70,00	X	X	X	X	X
4	FH07B24S	Hub Body 24 h: Alloy Flanges (Silver)+Carbon Fibre Cent.	70,00	X	X	X	X	X
4	FH07B28S	Hub Body 28 h: Alloy Flanges (Silver)+Carbon Fibre Cent.	70,00	X	X	X	X	X
4	FH07B32S	Hub Body 32 h: Alloy Flanges (Silver)+Carbon Fibre Cent.	70,00	X	X	X	X	X
5	HB2097	Bearing Enduro 699 20x9x6mm 2RS	3,80	B	X	X	A	A
5	HB2097CH	Ceramic Bearing Enduro CH699 LLB 20x9x6mm 2RS (HCB)	20,30	A	X	X	B	B

Note: Modified from previous Spare Part Manual

A: Same parts

B: Parts are usable, but different in material, appearance, finish, size.

X: Non-interchangeable

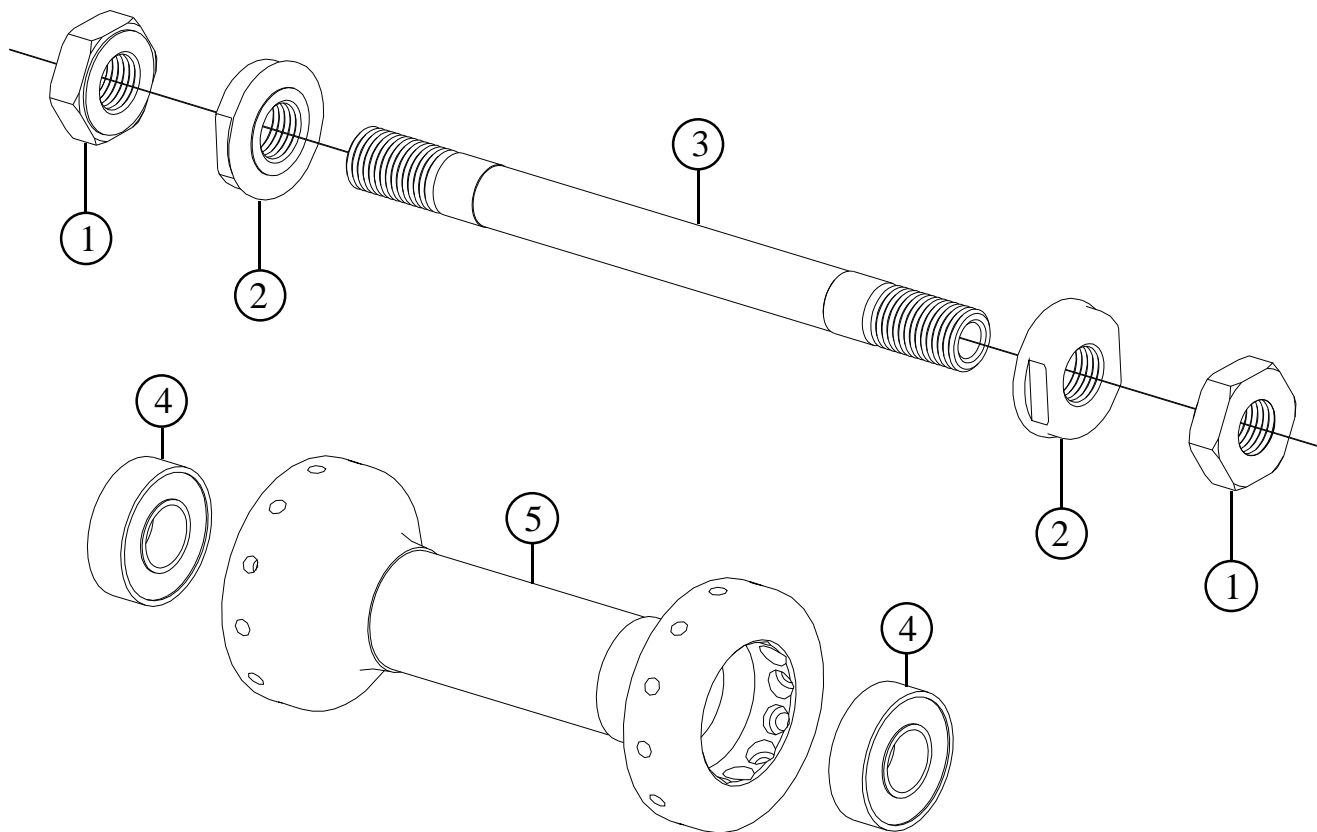
Specifications are subject to change without notice

FRM

Front Hub for Road Only

SP-R Team

2008 Prices for Italian consumers only



SUPPLIED ONLY AS WHEELSET SP-R21

Item no.	Code	DESCRIPTION	Price Euro	INTERCHANGEABILITY				
				FL-R Team CA HCB	FL-M Team/ Team Disc	FL-M Pro/ Pro Disc	SP-R Team CA	SP-R Team CA HCB
1	FH01C	Lock Nut: M9 x 17 mm / Thickness 5,5 mm / Light Alloy	2,00	X	X	X	X	X
2	FH02C	Inner Nut: M9 x 16 mm / Dia. 20 mm / Light Alloy	3,00	X	X	X	X	X
3	FH04C	Hub Axle 109 mm / Dia. 9mm / Light alloy	16,50	X	X	X	B	X
4	HB2097	Bearing Enduro 699 20x9x6mm 2RS	3,80	B	X	X	A	B
4	HB2097CH	Ceramic Bearing Enduro CH699 LLB 20x9x6mm 2RS	20,30	A	X	X	B	A
5	FH07E24G	Hub Body 24 h: Gold anodised Flanges. Carbon F. Centre	70,00	X	X	X	A	A
5	FH07E24S	Hub Body 24 h: Silver anodised Flanges. Carbon F. Centre	70,00	X	X	X	A	A

Note: Modified from previous Spare Part Manual

A: Same parts

B: Parts are usable, but different in material, appearance, finish, size.

X: Non-interchangeable

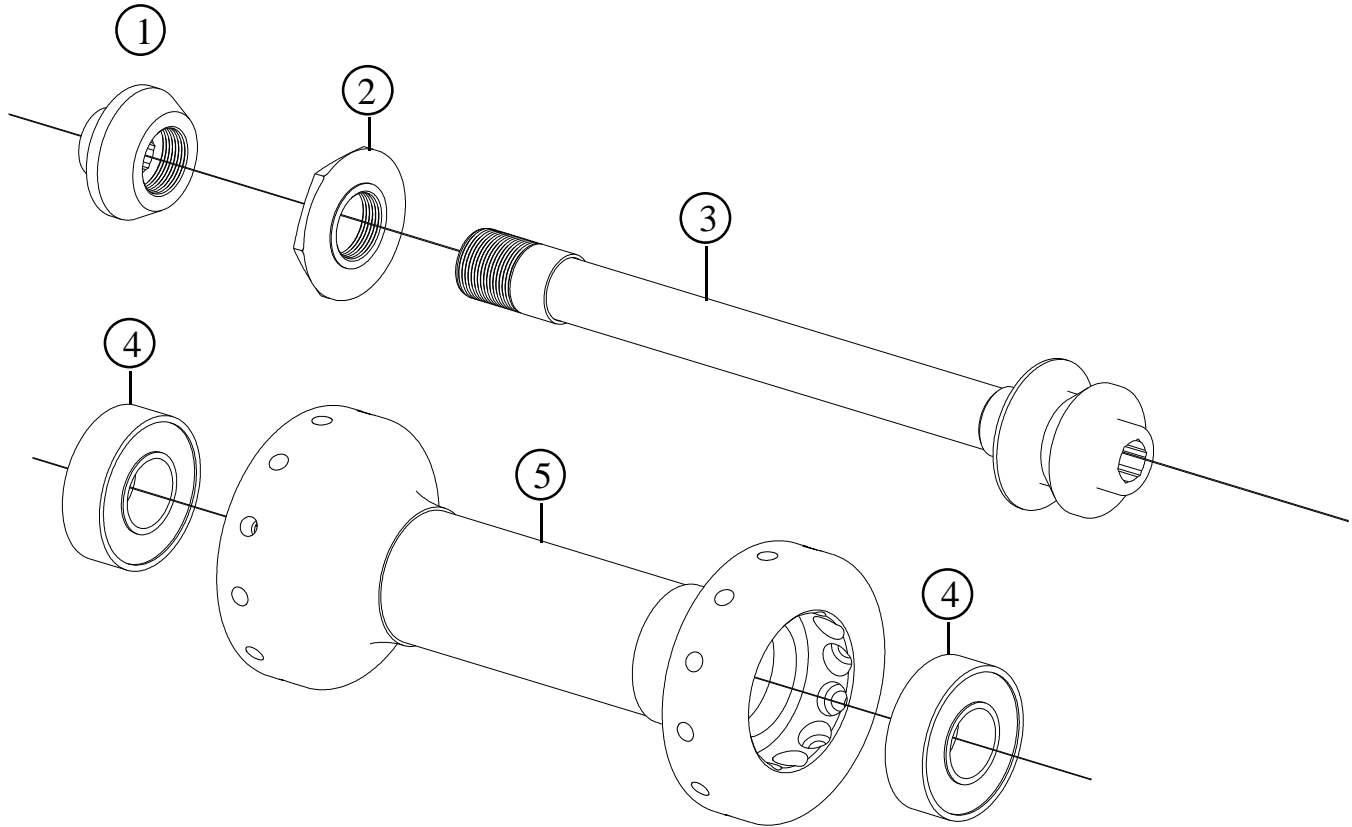
Specifications are subject to change without notice

FRM

Front Hub for Road Only

SP-R Team CA & SP-R Team CA HCB

2008 Prices for Italian consumers only



SUPPLIED ONLY AS WHEELSET SP-R21 Aerolite and SP-R21 Aerolite HCB

Item no.	Code	DESCRIPTION	Price Euro	INTERCHANGEABILITY				
				FL-R Team CA HCB	FL-R Team CA	FL-M Team/ Team Disc	FL-M Pro/ Pro Disc	SP-R Team
1	FH003CA	Lock Nut for carbon fibre axle / Light alloy	3,50	A	A	X	X	X
2	FH02CCA	Inner Nut for carbon fibre axle / Light alloy	3,00	A	A	X	X	X
3	FH04CCA	Carbon Fibre Axle with bonded light alloy ends	22,00	A	A	X	X	X
4	HB2097	Bearing Enduro 699 20x9x6mm 2RS	3,80	B	A	X	X	A
4	HB2097CH	Ceramic Bearing Enduro CH699 LLB 20x9x6mm 2RS (HCB)	20,30	A	B	X	X	B
5	FH07E24G	Hub Body 24 h: Gold anodised Flanges. Carbon F. Centre	70,00	X	X	X	X	A
5	FH07E24S	Hub Body 24 h: Silver anodised Flanges. Carbon F. Centre	70,00	X	X	X	X	A

Note: Modified from previous Spare Part Manual

A: Same parts

B: Parts are usable, but different in material, appearance, finish, size.

X: Non-interchangeable

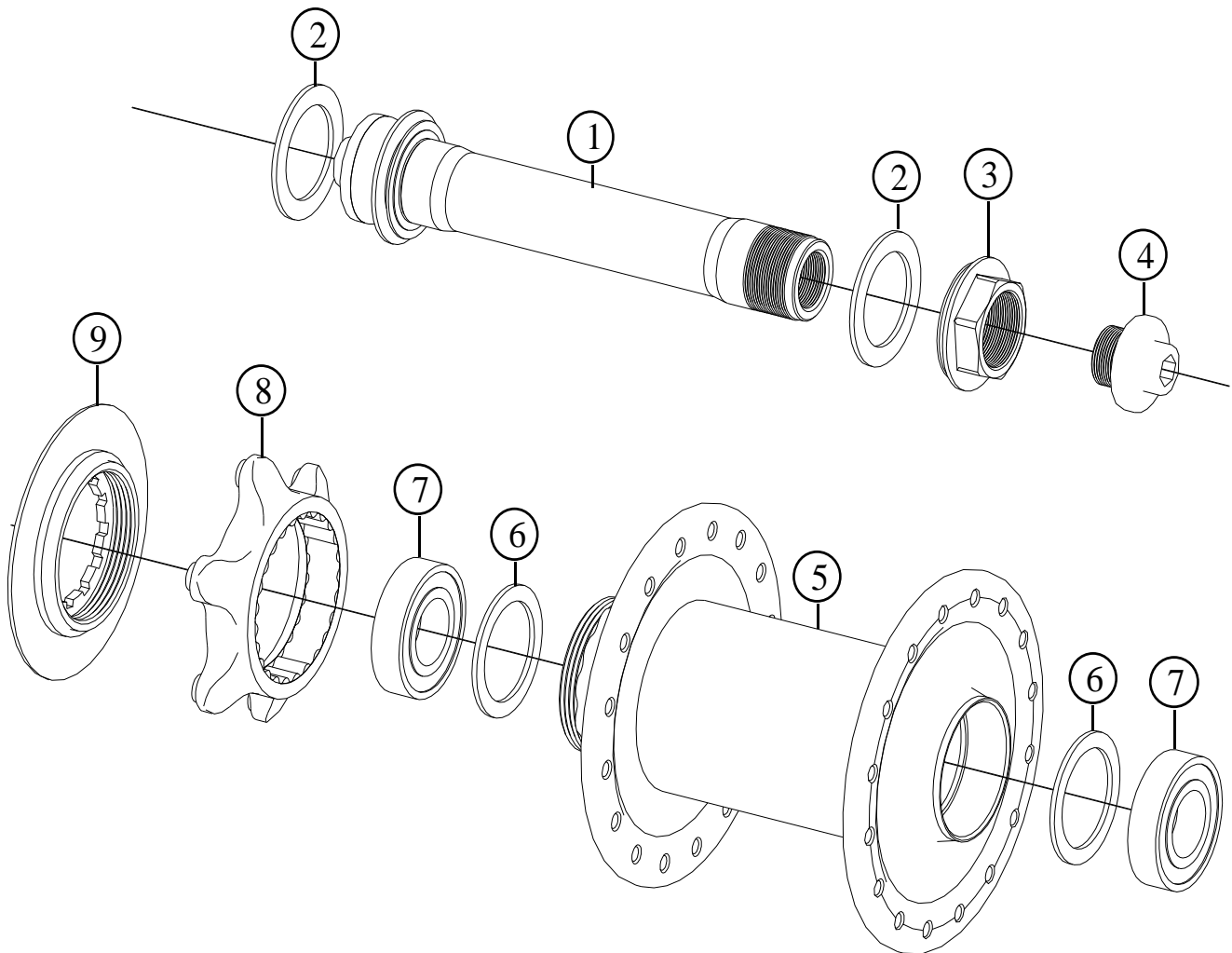
Specifications are subject to change without notice

FRM

Front Hub for MTB

FL-M Team Disc - Modified

2008 Prices for Italian consumers only



ALSO SUPPLIED ON WHEELSETS: FL-M21 XMD TR or FL-M21 XMD TR Aerolite

Item no.	Code	DESCRIPTION	Price Euro	INTERCHANGEABILITY					
				FL Comp Pro	FL-Pro 2006	SP-R FL-R Feather	FL-M Pro Disc	SP Comp Pro	FL-M Team
1	FH0315	Hub Axle Dia 15 mm with bonded end cap/ Light Alloy	34,00	X	A	X	A	X	A
2	3FH02DS	Rubber Seal: 24x17x1	0,25	X	A	X	A	X	A
3	FH0215	Inner Nut: M15x17 with rubber shield / L. alloy	3,50	X	A	X	A	X	A
4	FH0115	Axle Cap End: M10,5 Long 13,5 / Light Alloy	3,50	X	A	X	A	X	A
5	FLMTDF32	Hub Body Carbon fibre/Alloy. Gold anodised. 32H	75,00	X	X	X	X	X	X
5	FLMTDF28	Hub Body Carbon fibre/Alloy. Gold anodised. 28H	75,00	X	X	X	X	X	X
6	BS24181	Bearing Spacer 23,8x18x1,0 mm / Light Alloy	0,60	X	X	X	X	X	A
7	HB24155	Bearing 24x15x5 mm 6802 2RS	8,50	X	A	X	A	X	A
8	DH-DF3	Disc Flange without bolts for 6 holes Internat. Std. rotors	25,00	X	X	X	B	X	X
9	DH-LR2	Lock Ring for Disc Flange DH-DF3	10,50	X	X	X	B	X	X

Note: Modified from previous Spare Part Manual

A: Same parts

B: Parts are usable, but different in material, appearance, finish, size.

X: Non-interchangeable

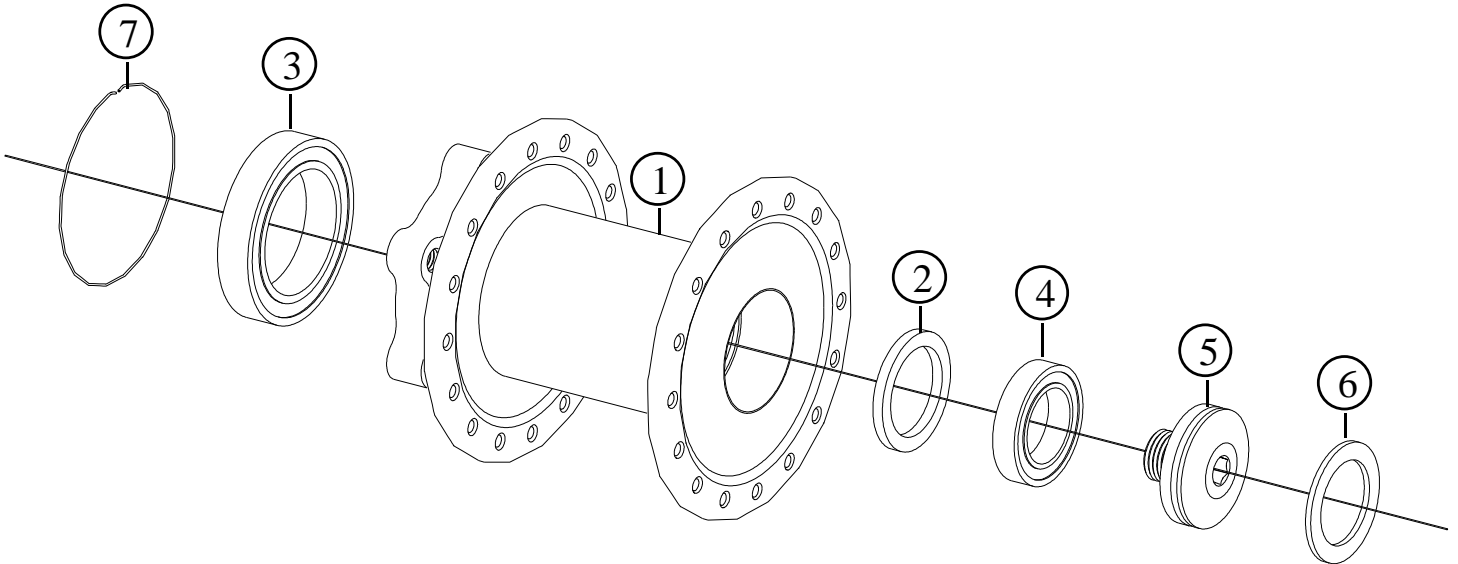
Specifications are subject to change without notice

FRM

Front Hub for MTB

Lefty FL-M Team Disc

2008 Prices for Italian consumers only



ALSO SUPPLIED ON WHEELSETS: Lefty FL-M21 XMD TR or Lefty FL-M21 XMD TR Aerolite

Item no.	Code	DESCRIPTION	Price Euro	INTERCHANGEABILITY					
				FL Comp Pro	FL-Pro 2006	SP-R FL-R Feather	FL-M Pro Disc	SP Comp Pro	FL-M Team
1	FLMTLDF32	Hub Body Carbon fibre/Alloy. Gold anodised. 32H	75,00	X	X	X	X	X	X
1	FLMTLDF24	Hub Body Carbon fibre/Alloy. Gold anodised. 24H	75,00	X	X	X	X	X	X
2	FH05A2	Bearing Spacer 23,8x18x2,2 mm / Light Alloy	0,60	X	X	X	X	X	A
3	BB37257RS	Bearing 6805 2RS 37x25x7 mm (Red Seal. Heavy duty)	15,70	X	X	X	X	X	X
4	HB24155	Bearing 24x15x5 mm 6802 2RS	8,50	X	A	X	A	X	A
5	FH116L	Lock-nut bolt in light alloy. Thread 10x1 mm	4,00	X	X	X	X	X	X
6	3FH02DS	Rubber Seal: 24x17x1	0,25	X	A	X	A	X	A
7	FH117L	Bearing Retainer spring	1,00	X	X	X	X	X	X

A: Same parts

B: Parts are usable, but different in material, appearance, finish, size.

X: Non-interchangeable

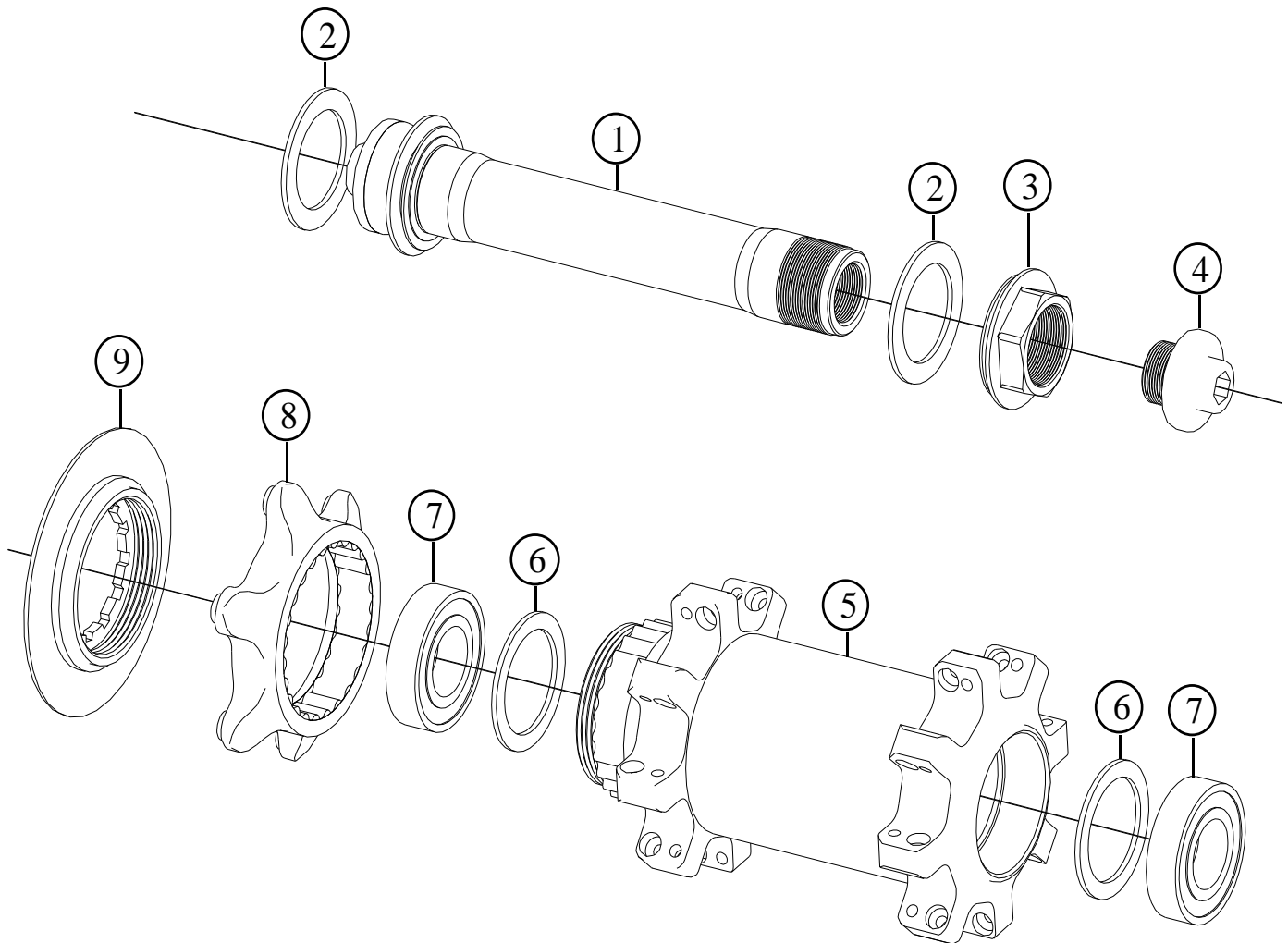
Specifications are subject to change without notice

FRM

Front Hub for MTB

SP-M Team Disc - Modified

2008 Prices for Italian consumers only



SUPPLIED ONLY ON WHEELSETS: SP-M21 XMD TR Aerolite

Item no.	Code	DESCRIPTION	Price Euro	INTERCHANGEABILITY					
				FL Comp Pro	FL-Pro 2006	SP-R FL-R Feather	FL-M Pro Disc	SP Comp Pro	FL-M Team
1	FH0315	Hub Axle Dia 15 mm with bonded end cap/ Light Alloy	34,00	X	A	X	A	X	A
2	3FH02DS	Rubber Seal: 24x17x1	0,25	X	A	X	A	X	A
3	FH0215	Inner Nut: M15x17 with rubber shield / L. alloy	3,50	X	A	X	A	X	A
4	FH0115	Axle Cap End: M10,5 Long 13,5 / Light Alloy	3,50	X	A	X	A	X	A
5	SPMTDF32	SP Hub Body. Carbon fibre/Alloy. Gold anodised. 32H	80,00	X	X	X	X	X	X
6	BS24181	Bearing Spacer 23,8x18x1,0 mm / Light Alloy	0,60	X	X	X	X	X	A
7	HB24155	Bearing 24x15x5 mm 6802 2RS	8,50	X	A	X	A	X	A
8	DH-DF3	Disc Flange without bolts for 6 holes Internat. Std. rotors	25,00	X	X	X	B	X	X
9	DH-LR2	Lock Ring for Disc Flange DH-DF3	10,50	X	X	X	B	X	X

Note: Modified from previous Spare Part Manual

A: Same parts

B: Parts are usable, but different in material, appearance, finish, size.

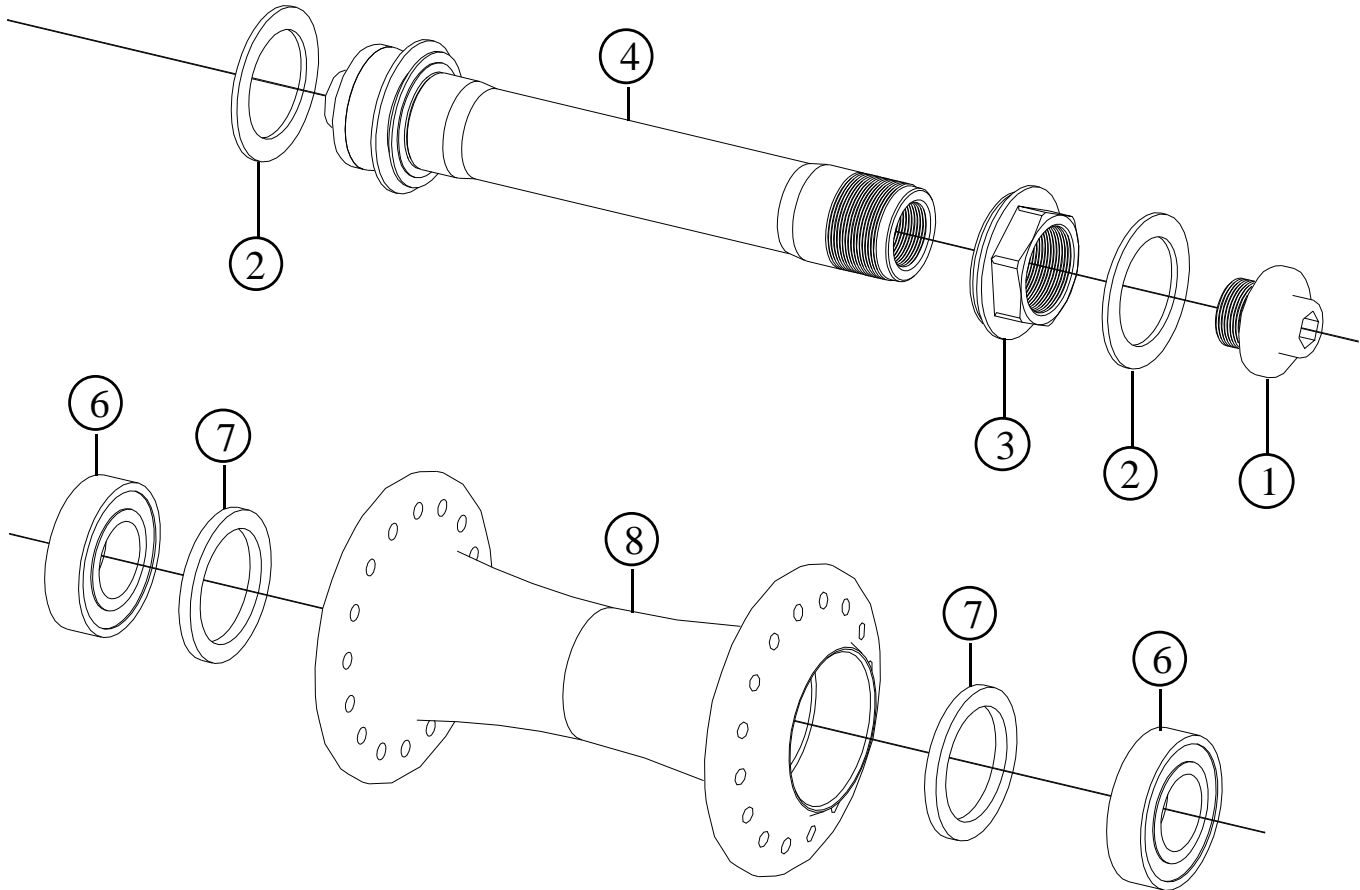
X: Non-interchangeable

Specifications are subject to change without notice

FRM

Front Hub for Road & MTB
FL-R Pro & FL-M Pro

2008 Prices for Italian consumers only



ALSO SUPPLIED ON WHEELSET: FL-R12, FL-M12 ZTR

Item no.	Code	DESCRIPTION	Price Euro	INTERCHANGEABILITY				
				FL-M Team	FL-M Team Disc	FL-M Pro Disc	SP Pro/Comp	FL-R or SP-R Team
1	FH0115	Axle Cap End: M10,5 Long 13,5 / Light Alloy	3,50	A	A	A	X	X
2	3FH02DS	Rubber Seal: 24x17x1	0,25	A	A	A	X	X
3	FH0215	Inner Nut: M15x17 with rubber shield / L. alloy	3,50	A	A	A	X	X
4	FH0315	Hub Axle 92,5 mm / Dia 15 mm / Light Alloy	34,00	A	A	A	X	X
5	FH 0415	Axle Cap End: M15 with rubber shield / L. alloy	3,50	A	A	A	X	X
6	HB24155	Bearing 24x15x5 mm 6802 2RS	8,50	A	A	A	X	X
7	FH05A1	Bearing Spacer 23,8x18x1,6 mm / Light Alloy	0,60	X	X	A	X	X
8	FH07F24	Hub Body 24 holes / Light Alloy, Black	45,00	X	X	X	X	X
8	FH07F28	Hub Body 28 holes / Light Alloy - Black	45,00	X	X	X	X	X
8	FH07F32	Hub Body 32 holes / Light Alloy - Black	45,00	X	X	X	X	X

A: Same parts

B: Parts are usable, but different in material, appearance, finish, size.

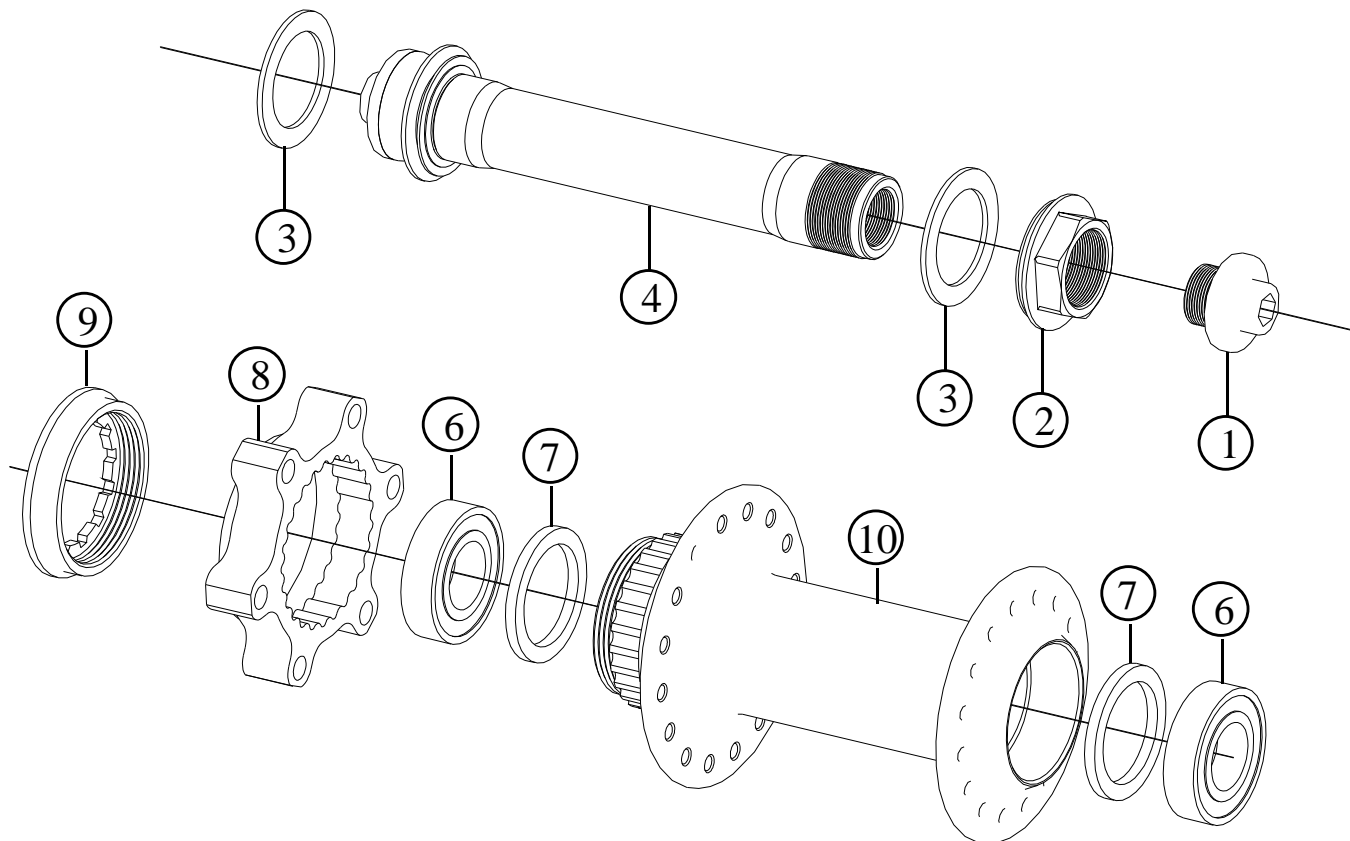
X: Non-interchangeable

Specifications are subject to change without notice

FRM

Front Hub for MTB FL-M Pro Disc

2008 Prices for Italian consumers only



ALSO SUPPLIED ON WHEELSETS: FL-M12 UFO and FL-M12 XMD TR

Item no.	Code	DESCRIPTION	Price Euro	INTERCHANGEABILITY						
				FL& SP Comp Pro	FL-R Team	SP-R Team	FL-R Pro	FL-M Comp Disc	FL-M Team	FL-M Team Disc
1	FH0115	Axle Cap End: M10,5 Long 13,5 / Light Alloy	3,50	X	X	X	A	X	A	A
2	FH0215	Inner Nut: M15x17 with rubber seal / Light alloy	3,50	X	X	X	A	X	A	A
3	3FH02DS	Rubber Seal: 24x17x1	0,25	X	A	X	A	A	A	A
4	FH0315	Hub Axle 92,5 mm / Dia 15 mm / Light Alloy	34,00	X	X	X	A	X	A	A
6	HB24155	Bearing 24x15x5 mm 6802 2RS	8,50	X	X	X	A	X	A	A
7	FH05A2	Bearing Spacer 23,8x18x2,2 mm / Light Alloy	0,60	X	X	X	A	X	X	X
8	DH-DF2	Disc Flange without ribs: 6 holes International Std.	25,00	X	X	X	X	A	X	A
9	DH-LR1	Lock Ring for Disc Flange	9,00	X	X	X	X	A	X	A
10	FH07C28	Hub Body 28 holes / Light Alloy - Black	50,00	X	X	X	X	A	X	X
10	FH07C32	Hub Body 32 holes / Light Alloy - Black	50,00	X	X	X	X	A	X	X

A: Same parts

B: Parts are usable, but different in material, appearance, finish, size.

X: Non-interchangeable

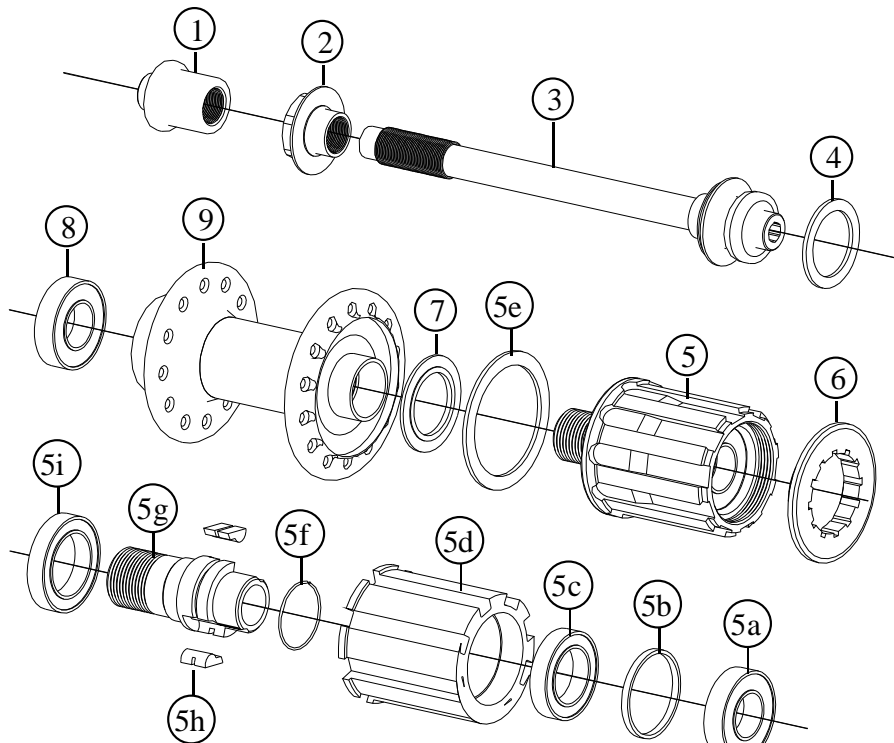
Specifications are subject to change without notice

FRM

Rear Hub for Road Only

FL-R Team CA & FL-R Team CA HCB

2008 Prices for Italian consumers only



ALSO SUPPLIED ON WHEELSET FL-R21 Aerolite & HCB, FL-R24 Aerolite Carbon Zipp & HCB

Item no.	Code	DESCRIPTION	Price Euro	INTERCHANGEABILITY			
				FL-R/M Pro 07-08	SP-R Team CA 08	FL-R Team 05-07	SP-R Team 07-08
1	RH003CA	Lock Nut for carbon fibre axle / Light alloy	3,50	X	A	X	X
2	RH02CCA	Inner Nut for carbon fibre axle / Light alloy	3,00	X	A	X	X
3	FH04CCA	Carbon Fibre Axle with bonded Ends (Stainless Steel Thread)	27,00	X	A	X	X
4	3FH02DS	Rubber Seal: 24x17x1	0,25	A	A	A	X
5	RH4SD152TDSS	Freehub Body Ass.: SH Compat. Titanium Bolt M15x2 starts. New rubber Seal	110,00	B	A	B	B
5	RH4SD152TC	Freehub Body Ass.: Campy Compat. Titanium Bolt M15 x 2 starts.	110,00	B	A	B	A
5e	RHSDRS	Freewheel Rubber seal (only for Shimano compatible outer shells)	0,50	B	A	B	B
6	RHLRSH11	Lock-ring in light alloy for cog-set – Shimano 11T	6,80	A	A	A	A
6	RHLRSH12	Lock-ring in light alloy for cog-set – Shimano 12T	6,80	A	A	A	A
6	RHLRCA11	Lock-ring in light alloy for cog-set – Campy 11T	6,80	A	A	A	A
6	RHLRCA12	Lock-ring in light alloy for cog-set – Campy 12T	6,80	A	A	A	A
8 - 5a	HB24126	Outer Bearing 24x12x6 mm 6901 2RS	7,50	A	B	A	A
8 - 5a	HB24126CH	Outer Ceramic Bearing 24x12x6mm Enduro CH6901 2RS (HCB)	19,50	B	A	B	B
5b	RH04SL1	Freewheel Body Bearing Spacer / Light Alloy	0,60	A	A	A	A
5c	HB24155	Freewheel Body Middle Bearing 24 x 15 x 5 mm 6802 2RS	8,50	A	A	A	A
5d	RH04SLSDSS	Freehub Shell Shimano Compat. Light Alloy. New rubber seal	29,70	B-A	A	B	B-A
5d	RH04RSC	Freehub Shell Campy Compat. Light Alloy	29,70	B-A	A	B	B-A
5f	RHLS07	Pawls Spring 0,7 mm	0,50	A	A	A	A
5g	RHFWB152T	Freewheel Body Fixing Bolt M15 x 2 starts / Titanium	37,60	X	X	A	X
5h	RH04LP	Freewheel pawl/High Tensile Steel (Silicium 52)	9,90 pc	A	A	A	A
5i	HB26175	Freewheel Body Inner Bearing 26x17x5 mm 6803 2RS	7,80	A	A	A	A
7	RH04SL3B	Freewheel Body Washer / Hardened Steel. 2,7mm thick	9,90	A	A	X	A
9	RH05G24S	Hub Body M15 24 h: Light Alloy Flanges / Carbon Fibre – Silver	120,00	X	X	X	X
9	RH05G28S	Hub Body M15 28 h: Light Alloy Flanges / Carbon Fibre – Silver	120,00	X	X	X	X
9	RH05G32S	Hub Body M15 32 h: Light Alloy Flanges / Carbon Fibre – Silver	120,00	X	X	X	X
9	RH05G24G	Hub Body M15 24 h: Light Alloy Flanges / Carbon Fibre – Gold	120,00	X	X	X	X
9	RH05G28G	Hub Body M15 28 h: Light Alloy Flanges / Carbon Fibre – Gold	120,00	X	X	X	X
9	RH05G32G	Hub Body M15 32 h: Light Alloy Flanges / Carbon Fibre – Gold	120,00	X	X	X	X

A: Same parts B: Parts are usable, but different in material, appearance, finish, size. X: Non-interchangeable

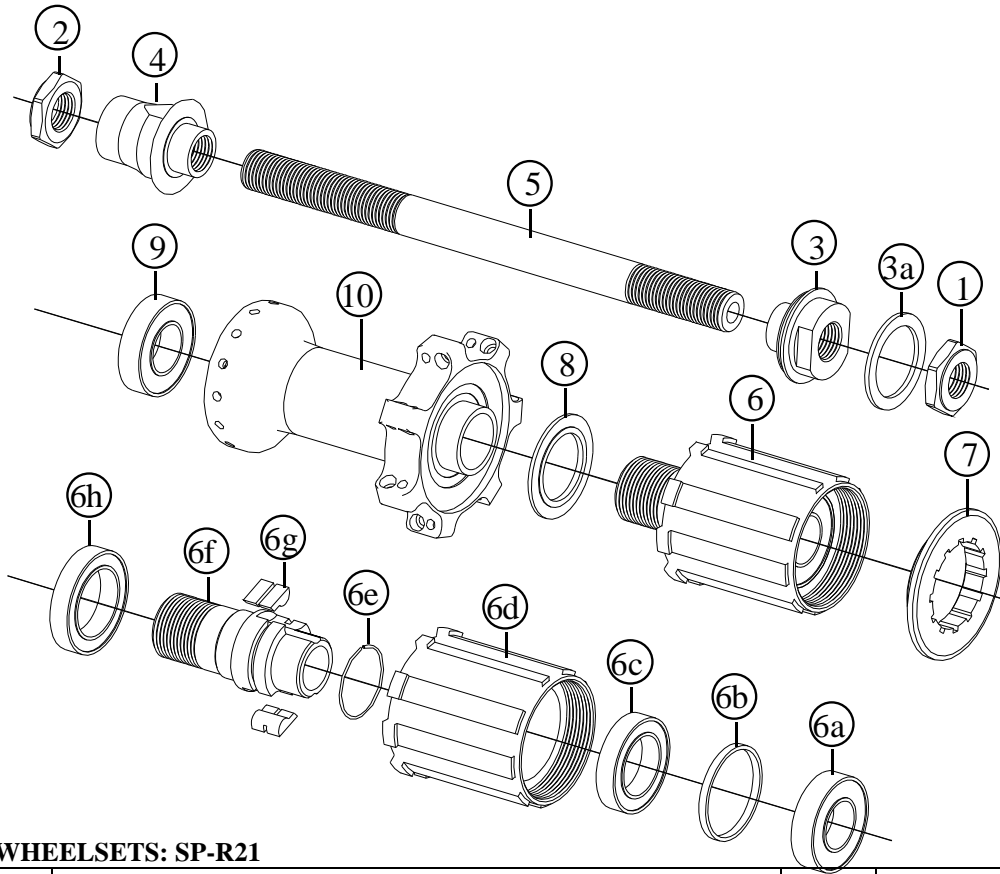
Specifications are subject to change without notice

FRM

Rear Hub for Road Only

SP-R TEAM

2008 Prices for Italian consumers only



SUPPLIED AS WHEELSETS: SP-R21

Item no.	Code	DESCRIPTION	Price Euro	INTERCHANGEABILITY			
				FL-R/M Pro 07-08	FL-R Team CA 07-08	FL-R Team 05-06	SP-R Team CA 08
1	RH01A	Right Hand Lock Nut: M10 x 17 mm / 4,5 mm thick / Steel	1,50	X	X	A	X
2	RH01B	Left hand Lock Nut: M10x17 mm / 4,5 mm / Light Alloy	2,00	X	X	A	X
3	RH02CR	Right Hand Inner Nut: M10 x 16 mm / Light Alloy	3,00	X	X	A	X
4	RH02DL	Left Hand Inner Nut: M10 x 16 mm /Light Alloy	3,50	X	X	A	X
5	RH03AA	Hub Axle 140,6 mm / Dia. 10 mm / Light alloy	18,60	X	X	A	X
6	RH4SD151TS	Freehub Body Ass.: Shimano Compat. Titanium Bolt M15x1 (1 start)	110,00	A/X	A	A	X
6	RH4SD151TC	Freehub Body Ass.: Campy Compat. Titanium Bolt M15x1 (1 start)	110,00	A/X	A	A	X
7	RHLRSH11	Lock-ring in light alloy for cog-set – Shimano 11T	6,80	A	A	A	A
7	RHLRSH12	Lock-ring in light alloy for cog-set – Shimano 12T	6,80	A	A	A	A
7	RHLRCA11	Lock-ring in light alloy for cog-set – Campy 11T	6,80	A	A	A	A
7	RHLRCA12	Lock-ring in light alloy for cog-set – Campy 12T	6,80	A	A	A	A
6a	HB24126	Freewheel Body Outer Bearing 24x12x6 mm 6901 2RS	7,50	A	A	A	A
6b	RH04SL1	Freewheel Body Bearing Spacer / Light Alloy	0,60	A	A	A	A
6c	HB24155	Freewheel Body Middle Bearing 24 x 15 x 5 mm 6802 2RS	8,50	A	A	A	A
6d	RH04SLS	Freehub Shell Shimano Compat. Light Alloy	29,70	A/X	A	A	X
6d	RH04SLC	Freehub Shell Campy Compat. Light Alloy	29,70	A/X	A	A	X
6e	RHLS07	Lips spring 0,7 mm	0,50	A	A	A	A
6f	RHFWB151T	Freewheel Body Fixing Bolt M15x 1 start / Titanium	37,60	X	X	X	X
6g	RH04LP	Freewheel Pawls /High Tensile Steel (Silicium 52)	9,90 pc	A	A	A	A
6h	HB26175	Freewheel Body Inner Bearing 26 x 17 x 5 mm 6803 2RS	7,80	A	A	A	A
8	RH04SL3B	Freewheel Body Washer / Hardened Steel. 2,7mm thick	9,90	A	A	X	A
9	HB24126	Bearing 24x12x6 mm 6901 2RS	7,50	A	A	A	A
10	RH05H28G	Hub Body M15 28 h: Gold anodised Flanges / Carbon Fibre	120,00	X	X	X	X
10	RH05H28S	Hub Body M15 28 h: Silver anodised Flanges / Carbon Fibre	120,00	X	X	X	X

Note: Modified from previous Spare Part Manual

A: Same parts

B: Parts are usable, but different in material, appearance, finish, size.

X: Non-interchangeable

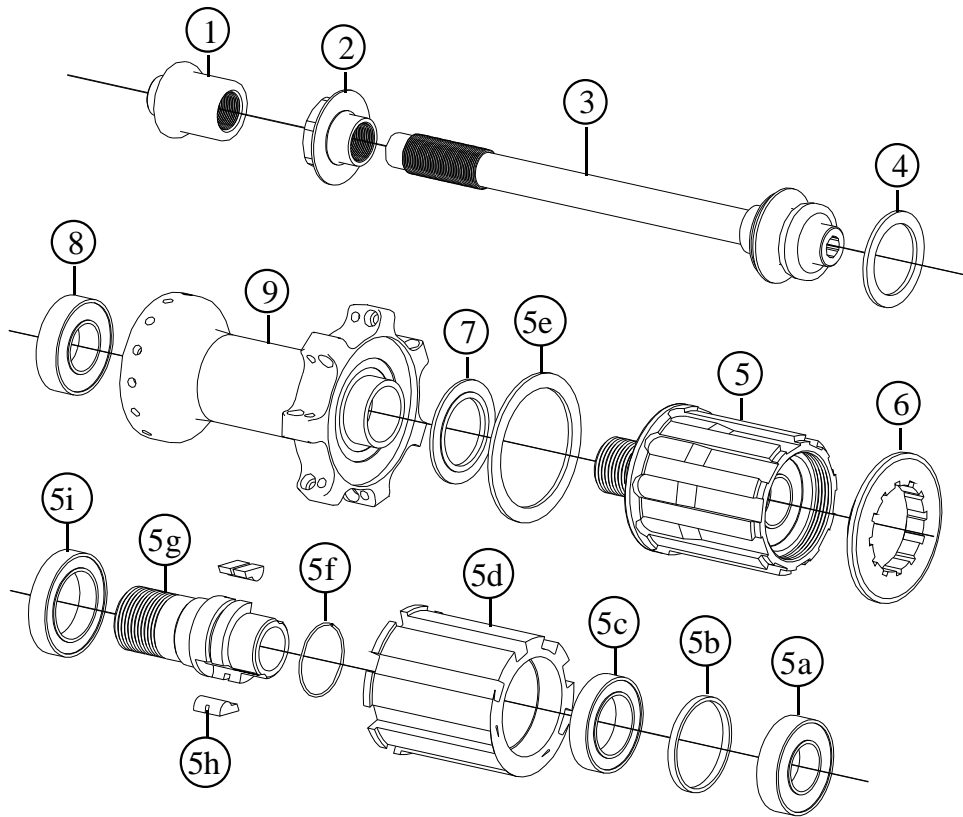
Specifications are subject to change without notice

FRM

Rear Hub for Road Only

SP-R Team CA & SP-R Team CA HCB

2008 Prices for Italian consumers only



ALSO SUPPLIED ON WHEELSET SP-R21 Aerolite & SP-R21 Aerolite HCB

Item no.	Code	DESCRIPTION	Price Euro	INTERCHANGEABILITY			
				FL-R/M Pro 07-08	FL-R Team CA 08	FL-R Team 05-07	SP-R Team 07-08
1	RH003CA	Lock Nut for carbon fibre axle / Light alloy	3,50	X	A	X	X
2	RH02CCA	Inner Nut for carbon fibre axle / Light alloy	3,00	X	A	X	X
3	FH04CCA	Carbon Fibre Axle with bonded Ends (Stainless Steel Thread)	27,00	X	A	X	X
4	3FH02DS	Rubber Seal: 24x17x1	0,25	A	A	A	X
5	RH4SD152TDSS	Freehub Body Ass.: SH Compat. Titanium Bolt M15x2 starts. New rubber Seal	110,00	B	A	B	B
5	RH4SD152TC	Freehub Body Ass.: Campy Compat. Titanium Bolt M15 x 2 starts.	110,00	B	A	B	A
5e	RHSDRS	Freewheel Rubber seal (only for Shimano compatible outer shells)	0,50	B	A	B	B
6	RHLRSH11	Lock-ring in light alloy for cog-set – Shimano 11T	6,80	A	A	A	A
6	RHLRSH12	Lock-ring in light alloy for cog-set – Shimano 12T	6,80	A	A	A	A
6	RHLRCA11	Lock-ring in light alloy for cog-set – Campy 11T	6,80	A	A	A	A
6	RHLRCA12	Lock-ring in light alloy for cog-set – Campy 12T	6,80	A	A	A	A
8 - 5a	HB24126	Outer Bearing 24x12x6 mm 6901 2RS	7,50	A	B	A	A
8 - 5a	HB24126CH	Outer Ceramic Bearing 24x12x6mm Enduro CH6901 2RS (HCB)	19,50	B	A	B	B
5b	RH04SL1	Freewheel Body Bearing Spacer / Light Alloy	0,60	A	A	A	A
5c	HB24155	Freewheel Body Middle Bearing 24x15x5 mm 6802 2RS	8,50	A	A	A	A
5d	RH04SLSDSS	Freehub Shell Shimano Compat. Light Alloy. New rubber seal	29,70	B-A	A	B	B-A
5d	RH04RSC	Freehub Shell Campy Compat. Light Alloy	29,70	B-A	A	B	B-A
5f	RHLS07	Pawls Spring 0,7 mm	0,50	A	A	A	A
5g	RHFWB152T	Freewheel Body Fixing Bolt M15 x 2 starts / Titanium	37,60	A	A	A	A
5h	RH04LP	Freewheel pawl /High Tensile Steel (Silicium 52)	9,90 pc	A	A	A	A
5i	HB26175	Freewheel Body Inner Bearing 26x17x5 mm 6803 2RS	7,80	A	A	A	A
7	RH04SL3B	Freewheel Body Washer / Hardened Steel. 1,5mm thick	9,90	X	X	X	X
9	RH05H28G	Hub Body M15 28 h: Gold anodised Flanges / Carbon Fibre	120,00	X	X	X	A
9	RH05H28S	Hub Body M15 28 h: Silver anodised Flanges / Carbon Fibre	120,00	X	X	X	A

A: Same parts

B: Parts are usable, but different in material, appearance, finish, size.

X: Non-interchangeable

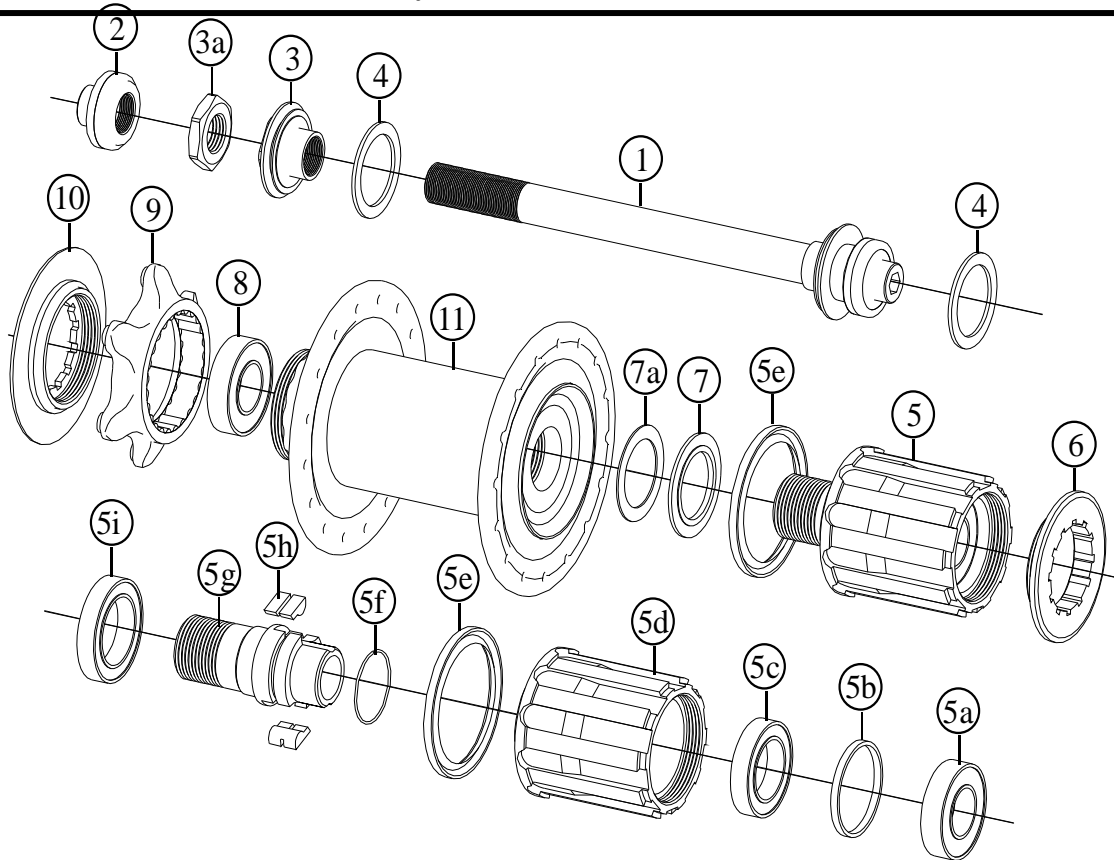
Specifications are subject to change without notice

FRM

Rear Hub for MTB

FL-M Team Disc - Modified

2008 Prices for Italian consumers only



SUPPLIED ON WHEELSETS: FL-M21 XMD TR, FL-M21 XMD TR Aerolite, Lefty FL-M21 XMD TR, Lefty FL-M21 XMD TR Aerolite

Item no.	Code	DESCRIPTION	Price Euro	INTERCHANGEABILITY				
				FL-M Pro Disc 06-07	FL-M Pro Disc 08	FL-M Pro 06-07	FL-M Pro 08	SP-M Team Disc 08
1	RHA01B	Hub Axle assembled. Lock-nut 135 mm / Light alloy	23,00	A	A	A	A	A
2	RHA01A	Axle Cup End for 5mm Allen Key / Light Alloy	3,50	A	A	A	A	A
3	RHA01C2	Left Hand Adjustable Inner Nut / Light Alloy & Lock-Nut (3a)	5,00	X	B	X	B	A
4	3FH02DS	Rubber Seal: 24x17x1	0,25	A	A	A	A	A
5	RH4SD162TLSS	Freehub Body Ass. for Lip Seal. Steel Bolt M16x2 starts. Red anodised	102,50	B	A	B	A	A
6	RHLRSH11	Lock-ring in light alloy for cog-set -Shimano 11T (series)	6,80	A	A	A	A	A
6	RHLRSH12	Lock-ring in light alloy for cog-set -Shimano 12T (optional)	6,80	A	A	A	A	A
5a	HB24126	Freewheel Body Outer Bearing 24x12x6 mm 6901 2RS	7,50	A	A	A	A	A
5b	RH04SL1	Freewheel Body Bearing Spacer / Light Alloy	0,50	A	A	A	A	A
5c	HB24155	Freewheel Body Middle Bearing 24x15x5 mm 6802 2RS	8,50	A	A	A	A	A
5d	RH04SLSLSS	Freewheel Shell for Lip Seal / Light Alloy / Red anodised	29,00	B	A	B	A	A
5e	RH04FWLS	Rubber Lip Seal for Freewheel Body (Enduro 37,5x30x2,5mm)	2,00	B	A	B	A	A
5f	RHLS07	Pawls Spring 0,7 mm	0,50	A	A	A	A	A
5g	RHFWB162S	Freewheel Body Fixing Bolt M16 x 2 starts / HT Steel	33,70	A	A	A	A	X
5h	RH04LP	Freewheel pawls /High Tensile Steel (Silicium 52)	9,90 pc	A	A	A	A	A
5i	HB26175	Freewheel Body Inner Bearing 26x17x5 mm 6803 2RS	7,80	A	A	A	A	A
7	RH04SL3A	Freewheel Body Washer / High Tens. Steel. 2,7mm thick	9,90	B	A	B	A	A
7a	RH04SL3B	Steel washer 24x17x0.5mm	0,4	X	A	X	A	A
8	HB24126	Freewheel Body Outer Bearing 24x12x6 mm 6901 2RS	7,50	A	A	A	A	A
9	DH-DF3	Disc Flange without bolts for 6 holes Internat. Std. rotors	25,00	B	B	X	X	A
10	DH-LR2	Lock Ring for Disc Flange DH-DF3	10,50	B	B	X	X	A
11	FLMTDR28	Hub Body 28 holes / Carbon fibre-Light Alloy - Gold	120,00	X	X	X	X	X
11	FLMTDR32	Hub Body 32 holes / Carbon Fibre-Light Alloy - Gold	120,00	X	X	X	X	X

Note: Modified from previous Spare Part Manual

A: Same parts

B: Parts are usable, but different in material, appearance, finish, size.

X: Non-interchangeable

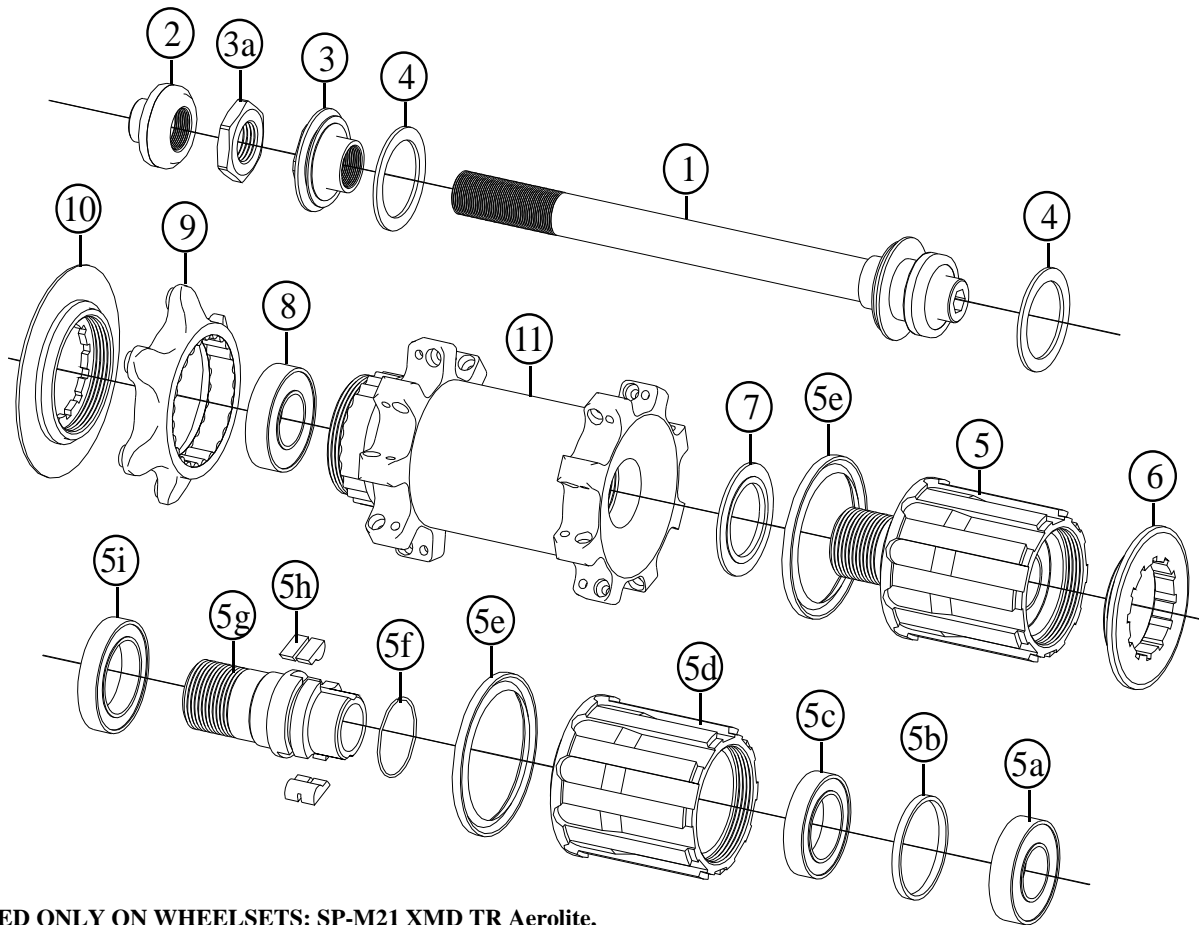
Specifications are subject to change without notice

FRM

Rear Hub for MTB

SP-M Team Disc - Modified

2008 Prices for Italian consumers only



SUPPLIED ONLY ON WHEELSETS: SP-M21 XMD TR Aerolite,

Item no.	Code	DESCRIPTION	Price Euro	INTERCHANGEABILITY				
				FL-M Pro Disc 06-07	FL-M Pro Disc 08	FL-M Pro 06-07	FL-M Pro 08	FL-M Team Disc 08
1	RHA01BR	Hub Axle assembled. Lock-nut 135mm / Light alloy	23,00	A	A	X	A	A
2	RHA01A	Axle Cup End for 5mm Allen Key / Light Alloy	3,50	A	A	X	A	A
3	RHA01C2	Left Hand Adjustable Inner Nut / Light Alloy & Lock-Nut (3a)	5,00	X	B	X	B	A
4	3FH02DS	Rubber Seal: 24x17x1	0,25	A	A	A	A	A
5	RH4SD173TLSS	Freehub Body Ass. for Lip Seal. Steel Bolt M17x3 starts. Red anodised	102,50	B	A	B	A	A
6	RHLRSH11	Lock-ring in light alloy for cog-set -Shimano 11T (series)	6,80	A	A	A	A	A
6	RHLRSH12	Lock-ring in light alloy for cog-set -Shimano 12T (optional)	6,80	A	A	A	A	A
5a	HB24126	Freewheel Body Outer Bearing 24x12x6 mm 6901 2RS	7,50	A	A	A	A	A
5b	RH04SL1	Freewheel Body Bearing Spacer / Light Alloy	0,50	A	A	A	A	A
5c	HB24155	Freewheel Body Middle Bearing 24x15x5 mm 6802 2RS	8,50	A	A	A	A	A
5d	RH04SLSLSS	Freewheel Shell for Lip Seal / Light Alloy / Red anodised	29,00	B	A	B	A	A
5e	RH04FWLS	Rubber Lip Seal for Freewheel Body (Enduro 37,5x30x2,5mm)	2,00	B	A	B	A	A
5f	RHLS07	Pawls Spring 0,7 mm	0,50	A	A	A	A	A
5g	RHFWB173S	Freewheel Body Fixing Bolt M17 x 3 starts / HT Steel	33,70	X	X	X	X	A
5h	RH04LP	Freewheel pawls /High Tensile Steel (Silicium 52)	9,90 pc	A	A	A	A	A
5i	HB26175	Freewheel Body Inner Bearing 26x17x5 mm 6803 2RS	7,80	A	A	A	A	A
7	RH04SL3A	Freewheel Body Washer / High Tens. Steel. 2,7mm thick	9,90	B	A	B	A	A
8	HB24126	Freewheel Body Outer Bearing 24x12x6 mm 6901 2RS	7,50	A	A	A	A	A
9	DH-DF3	Disc Flange without bolts for 6 holes Internat. Std. rotors	25,00	B	B	X	X	A
10	DH-LR2	Lock Ring for Disc Flange DH-DF3	10,50	B	B	X	X	A
11	FLMTDR32	SP Hub Body 32 holes. Carbon Fibre-Light Alloy - Gold	135,00	X	X	X	X	X

Note: Modified from previous Spare Part Manual

A: Same parts

B: Parts are usable, but different in material, appearance, finish, size.

X: Non-interchangeable

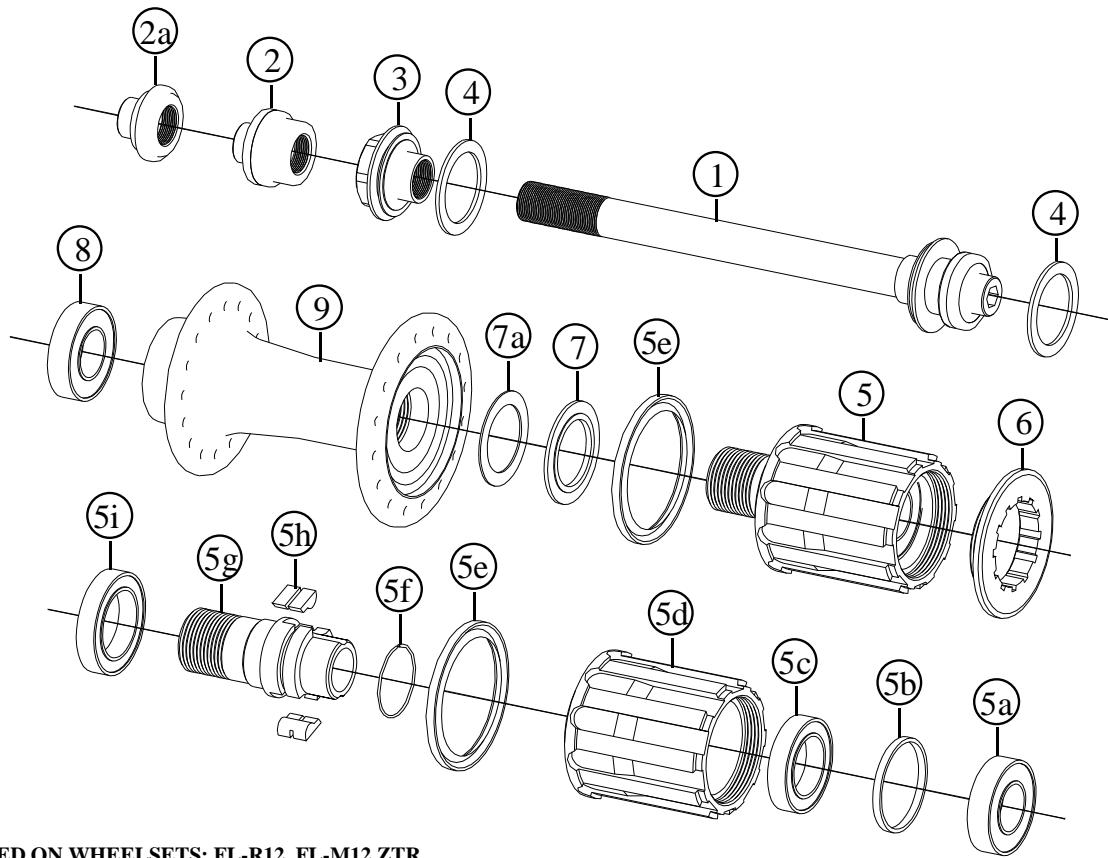
Specifications are subject to change without notice

FRM

Rear Hub for Road

FL-R Pro & FL-M Pro

2008 Prices for Italian consumers only



ALSO SUPPLIED ON WHEELSETS: FL-R12, FL-M12 ZTR

Item no.	Code	DESCRIPTION	Price Euro	INTERCHANGEABILITY				
				FL-M Team 06-07	FL-M Team Disc 06-07	FL-R Team CA 06-07	SP-M Team Disc 08	SP-R Team CA 08
1	RHA01B	Hub Axle assembled. Lock-nut 135 mm / Light alloy	23,00	X	X	X	X	X
2	RHA01AM	Axle Cup End for 5mm Allen Key / Light Alloy. MTB 135mm Locknut	3,50	A	A	X	A	X
2a	RHA01AR	Axle Cup End for 5mm Allen Key / Light Alloy. Road 130mm Locknut	3,50	X	X	X	X	X
3	RHA01C	Left Hand Adjustable Inner Nut / Light Alloy	3,50	A	A	X	A	X
4	3FH02DS	Rubber Seal: 24x17x1	0,25	A	A	A	A	A
5	RH4SD162TLSS	Freewheel Body Ass. for Lip Seal. Steel Bolt M16x2 starts. Red anodised	102,50	B	B	X	A	X
6	RHLRSH11	Lock-ring in light alloy for cog-set –Shimano 11T (series)	6,80	A	A	A	A	A
6	RHLRSH12	Lock-ring in light alloy for cog-set –Shimano 12T (optional)	6,80	A	A	A	A	A
5a	HB24126	Freewheel Body Outer Bearing 24x12x6 mm 6901 2RS	7,50	A	A	A	A	A
5b	RH04SL1	Freewheel Body Bearing Spacer / Light Alloy	0,50	A	A	A	A	A
5c	HB24155	Freewheel Body Middle Bearing 24x15x5 mm 6802 2RS	8,50	A	A	A	A	A
5d	RH04SLSLSS	Freewheel Shell for Lip Seal / Light Alloy / Red anodised	29,00	B	B	X	A	X
5e	RH04FWLS	Rubber Lip Seal for Freewheel Body (Enduro 37,5x30x2,5mm)	2,00	B	B	X	A	X
5f	RHLS07	Pawls Spring 0,7 mm	0,50	A	A	A	A	A
5g	RHFWB162S	Freewheel Body Fixing Bolt M16 x 2 starts / HT Steel	33,70	A	A	X	X	X
5h	RH04LP	Freewheel pawls /High Tensile Steel (Silicium 52)	9,90 pc	A	A	A	A	A
5i	HB26175	Freewheel Body Inner Bearing 26x17x5 mm 6803 2RS	7,80	A	A	A	A	A
7	RH04SL3A	Freewheel Body Washer / High Tens. Steel. 2,7mm thick	9,90	B	B	B	A	A
7a	RH04SL3B	Steel washer 24x17x0.5mm	0,4	X	X	X	A	X
8	HB24126	Freewheel Body Outer Bearing 24x12x6 mm 6901 2RS	7,50	A	A	A	A	A
9	RH06SH28	Hub Body M16 28 holes / Light Alloy – Black	54,00	X	X	X	X	X
9	RH06SH32	Hub Body M16 32 holes / Light Alloy - Black	54,00	X	X	X	X	X

A: Same parts.

B: Parts are usable, but different in material, appearance, finish, size, etc.

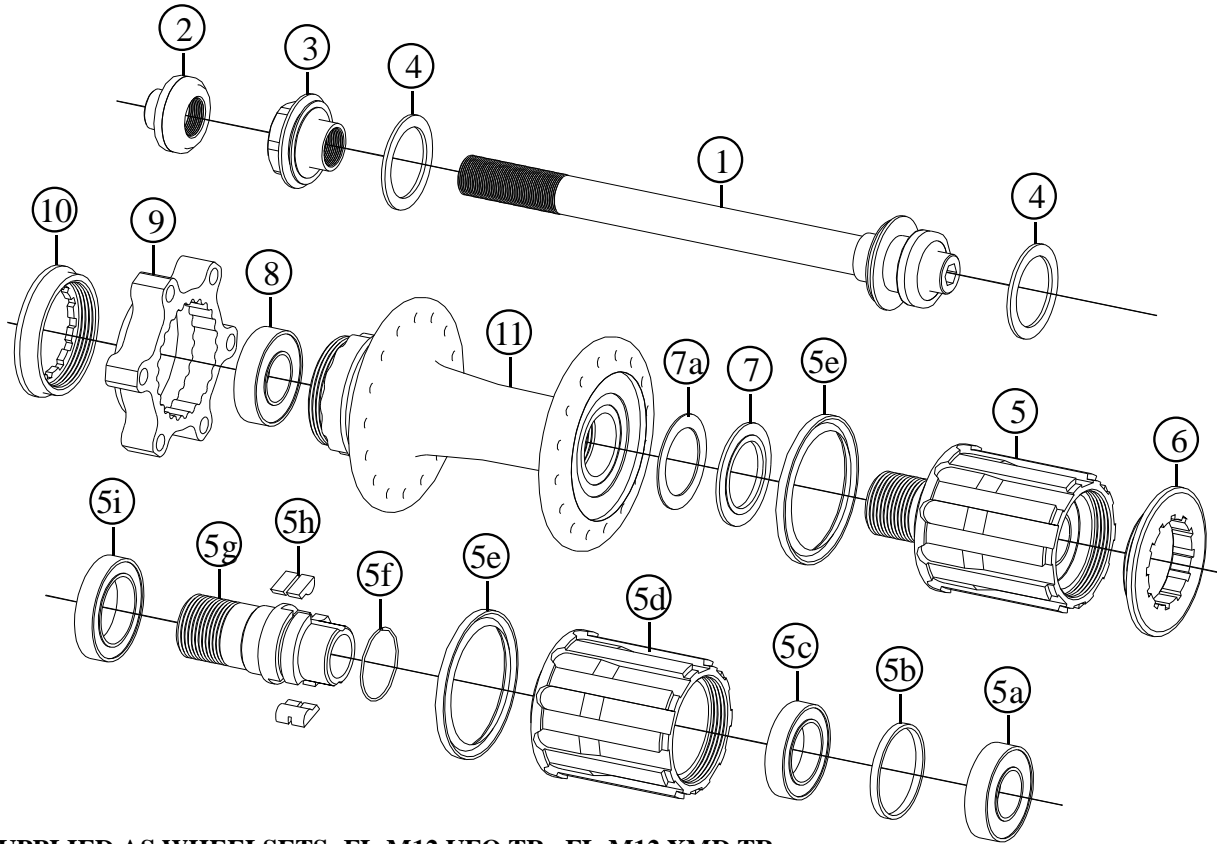
X: Non-interchangeable

Specifications are subject to change without notice

FRM

Rear Hub for MTB FL-M Pro Disc

2008 Prices for Italian consumers only



ALSO SUPPLIED AS WHEELSETS: FL-M12 UFO TR, FL-M12 XMD TR

Item no.	Code	DESCRIPTION	Price Euro	INTERCHANGEABILITY				
				FL-M Team Disc 06-07	FL-M Team Disc 08	FL-M Pro 06-07	FL-M Pro 08	SP-M Team Disc 08
1	RHA01B	Hub Axle assembled. Lock-nut 135 mm / Light alloy	23,00	A	A	A	X	A
2	RHA01A	Axle Cup End for 5mm Allen Key / Light Alloy	3,50	A	A	A	X	A
3	RHA01C	Left Hand Adjustable Inner Nut / Light Alloy	3,50	A	A	A	A	A
4	3FH02DS	Rubber Seal: 24x17x1	0,25	A	A	A	A	A
5	RH4SD162TLSS	Freehub Body Ass. for Lip Seal. Steel Bolt M16x2 starts. Red anodised	102,50	B	A	B	A	A
6	RHLRSH11	Lock-ring in light alloy for cog-set -Shimano 11T (series)	6,80	A	A	A	A	A
6	RHLRSH12	Lock-ring in light alloy for cog-set -Shimano 12T (optional)	6,80	A	A	A	A	A
5a	HB24126	Freewheel Body Outer Bearing 24x12x6 mm 6901 2RS	7,50	A	A	A	A	A
5b	RH04SL1	Freewheel Body Bearing Spacer / Light Alloy	0,50	A	A	A	A	A
5c	HB24155	Freewheel Body Middle Bearing 24x15x5 mm 6802 2RS	8,50	A	A	A	A	A
5d	RH04SLSLSS	Freewheel Shell for Lip Seal / Light Alloy / Red anodised	29,00	B	A	B	A	A
5e	RH04FWLS	Rubber Lip Seal for Freewheel Body (Enduro 37,5x30x2,5mm)	2,00	B	A	B	A	A
5f	RHLS07	Pawls Spring 0,7 mm	0,50	A	A	A	A	A
5g	RHFWSB162S	Freewheel Body Fixing Bolt M16 x 2 starts / HT Steel	33,70	A	A	A	A	X
5h	RH04LP	Freewheel pawls /High Tensile Steel (Silicium 52)	9,90 pc	A	A	A	A	A
5i	HB26175	Freewheel Body Inner Bearing 26x17x5 mm 6803 2RS	7,80	A	A	A	A	A
7	RH04SL3A	Freewheel Body Washer / High Tens. Steel. 2,7mm thick	9,90	B	A	B	A	A
7a	RH04SL3B	Steel washer 24x17x0.5mm	0,4	B	A	B	A	A
8	HB24126	Freewheel Body Outer Bearing 24x12x6 mm 6901 2RS	7,50	A	A	A	A	A
9	DH-DF2	Disc Flange 6 holes International Std. (Black anodised)	25,00	A	A	X	X	A
10	DH-LR1	Lock Ring for Disc Flange (Gold anodised)	9,00	A	A	X	X	A
11	RH05H28	Hub Body M16 28 holes / Light Alloy - Black	57,00	X	X	X	X	X
11	RH05H32	Hub Body M16 32 holes / Light Alloy - Black	57,00	X	X	X	X	X

A: Same part

B: Parts are usable, but different in material, appearance, finish, size

X: Non-interchangeable

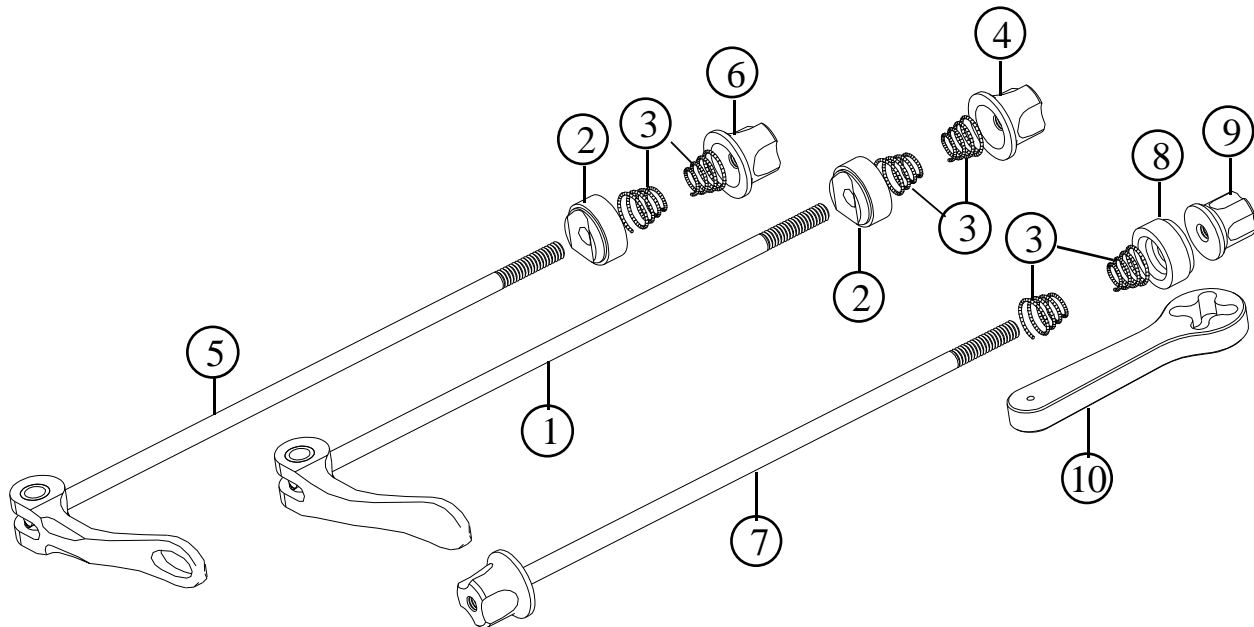
Specifications are subject to change without notice

FRM

Quick Release

FRM Team, FRM Pro & **FRM Team SL - New**

2008 Prices for Italian consumers only



Item no.	Code	DESCRIPTION	Price Euro	INTERCHANGEABILITY			
1	QRPLF	Front Pro Lever Black & Axle Assembly (Steel 4,5mm)	31,40				
1	QRPLR	Rear Pro Lever Black & Axle Assembly (Steel 4,5mm)	31,40				
2	QR00A	Washer with concave Delrin pad	2,50				
3	QR00B	Spring	0,80				
4	QR00CP	Nut for Pro axle with M4,5 Thread	2,50				
5	QRTLFL	Front Team Lever Black & Axle Assembly (Titanium 4mm)	58,00				
5	QRTLFLG	Front Team Lever Gold & Axle Assembly (Titanium 4mm)	58,00				
5	QRTLRL	Rear Team Lever Black & Axle Assembly for Road (Titanium 4mm)	58,00				
5	QRTLRLG	Rear Team Lever Gold & Axle Assembly for Road (Titanium 4mm)	58,00				
5	QRTLRLM	Rear Team Lever Black & Axle Assembly for MTB (Titanium 4mm)	58,00				
5	QRTLRLGM	Rear Team Lever Gold & Axle Assembly for MTB (Titanium 4mm)	58,00				
6	QR00C	Nut for Team axle with M4,0 thread	2,50				
7	QRTLFLSL	Front Team SL Axle Assembly (Titanium 4mm)	48,00				
7	QRTLRLSL	Rear Team SL Axle Assembly for Road (Titanium 4mm)	48,00				
7	QRTLRLMSL	Rear Team SL Axle Assembly for MTB (Titanium 4mm)	48,00				
8	QR00ASL	Washer with flat Delrin pad	2,50				
9	QR00CSL	Nut for Team SL axle with M4,0 thread	2,50				
10	SLTOOL	Tool for Team SL skewers	10,00				

Note: Modified from previous Spare Part Manual

A: Same parts

B: Parts are usable, but different in material, appearance, finish, size.

X: Non-interchangeable

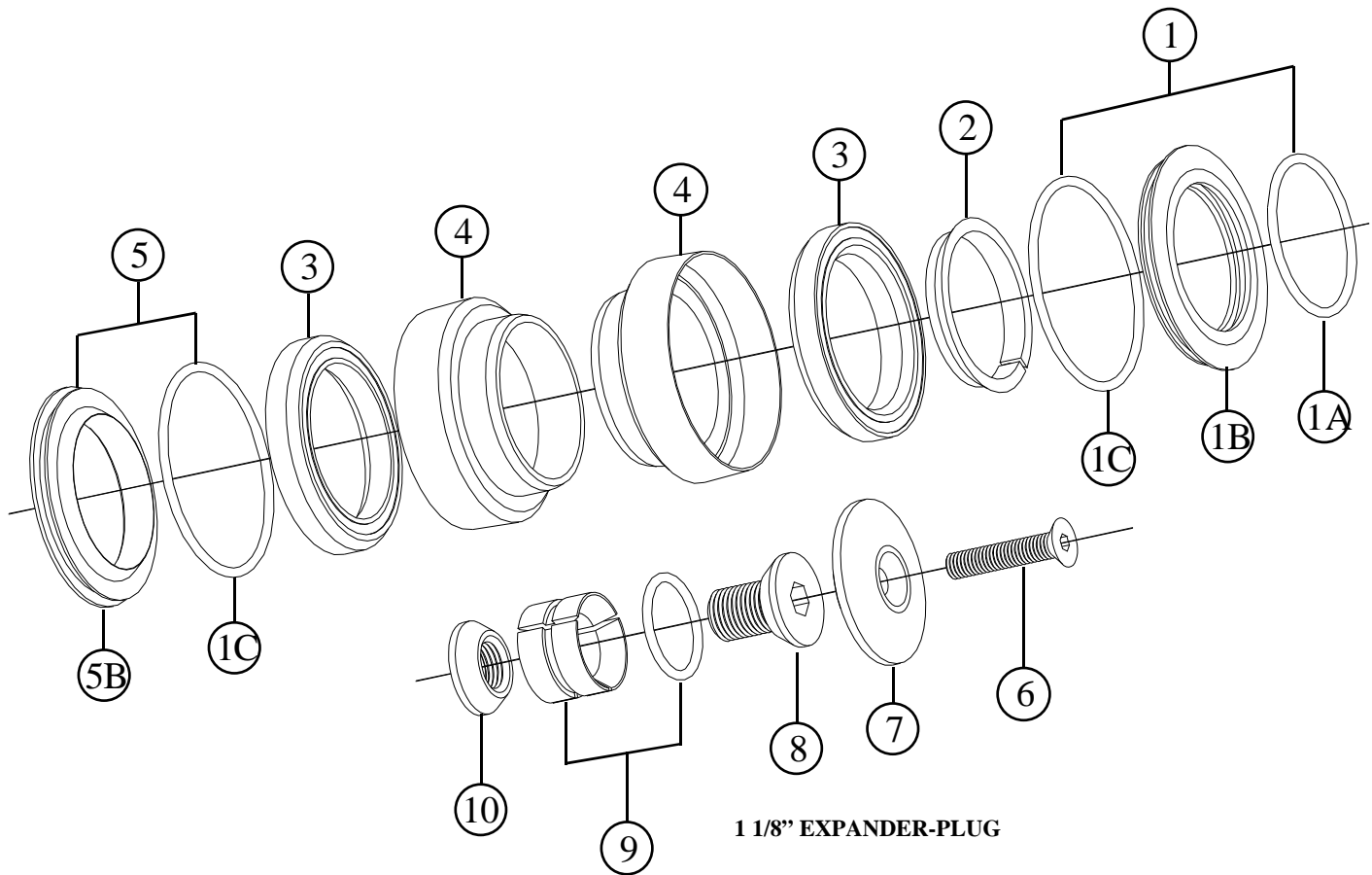
Specifications are subject to change without notice

FRM

Head Set

C-SET Pro & C-SET Team 1 1/8"

2008 Prices for Italian consumers only



Item no.	Code	DESCRIPTION	Price Euro	INTERCHANGEABILITY					
				C-Set 1"	A-Set 1"	A-Set 1 1/8"	C-Set OS	I-Set Pro	I-Set Team
1	HSC201	Upper Head Cone Assembly	6,00	X	X	X	A	X	X
1A	OR2112	O-Ring 2112 (I.D.28,30x1,78 mm)	-	X	X	X	A	X	X
1B	HSC201B	Upper Head Cone Housing / Light Alloy	6,40	X	X	X	A	X	X
1C	OR2137	O-Ring 2137 (I.D.33,05x1,78 mm)	-	X	A	X	A	X	X
2	HSC202	Upper Head Split Cone / Light Alloy	2,80	X	X	X	A	X	X
3	TH-872	Cartridge Bearing Micro ABC 36° x 36° 41,5x30,15x6,5	10,80	X	X	X	A	X	X
3	TH-872SS	As above but in Stainless Steel for the Team model	18,00	X	X	B	A	X	X
4	HSC204	Lower or Upper Head Cup Housing 34,1 mm / Black	6,80	X	X	X	A	X	X
4	HSC204G	Lower or Upper Head Cup Housing 34,1 mm / Gold	6,80	X	X	B	X	X	X
5	HSC205	Lower Head Cone Assembly	3,50	X	X	X	X	X	X
5B	HSC205A	Lower Head Cone Housing 30 mm / Light Alloy	3,50	X	X	X	X	X	X
6	TSCCE525	Bolt for play adjustment M5 x 25 Cone-Head / Steel	0,20	A	A	A	A	A	B
6	TSCCE525E	As above but in light alloy (gold) for the Team model	2,30	B	B	B	A	B	A
7	EP201	Cap / Light Alloy	4,00	X	X	A	A	A	B
7	EP201C	Cap / Carbon fibre for the Team model	9,00	X	X	A	A	B	A
8	EP102	Male Cone Bolt / Light Alloy	2,00	A	A	A	A	A	A
9	EP203	Three-Piece Expander with O-Ring 122	3,50	X	X	A	A	A	A
10	EP104	Female Cone Nut / Light Alloy	1,00	A	A	A	A	A	A

Note: Modified from previous Spare Part Manual

A: Same parts

B: Parts are usable, but different in material, appearance, finish, size.

X: Non-interchangeable

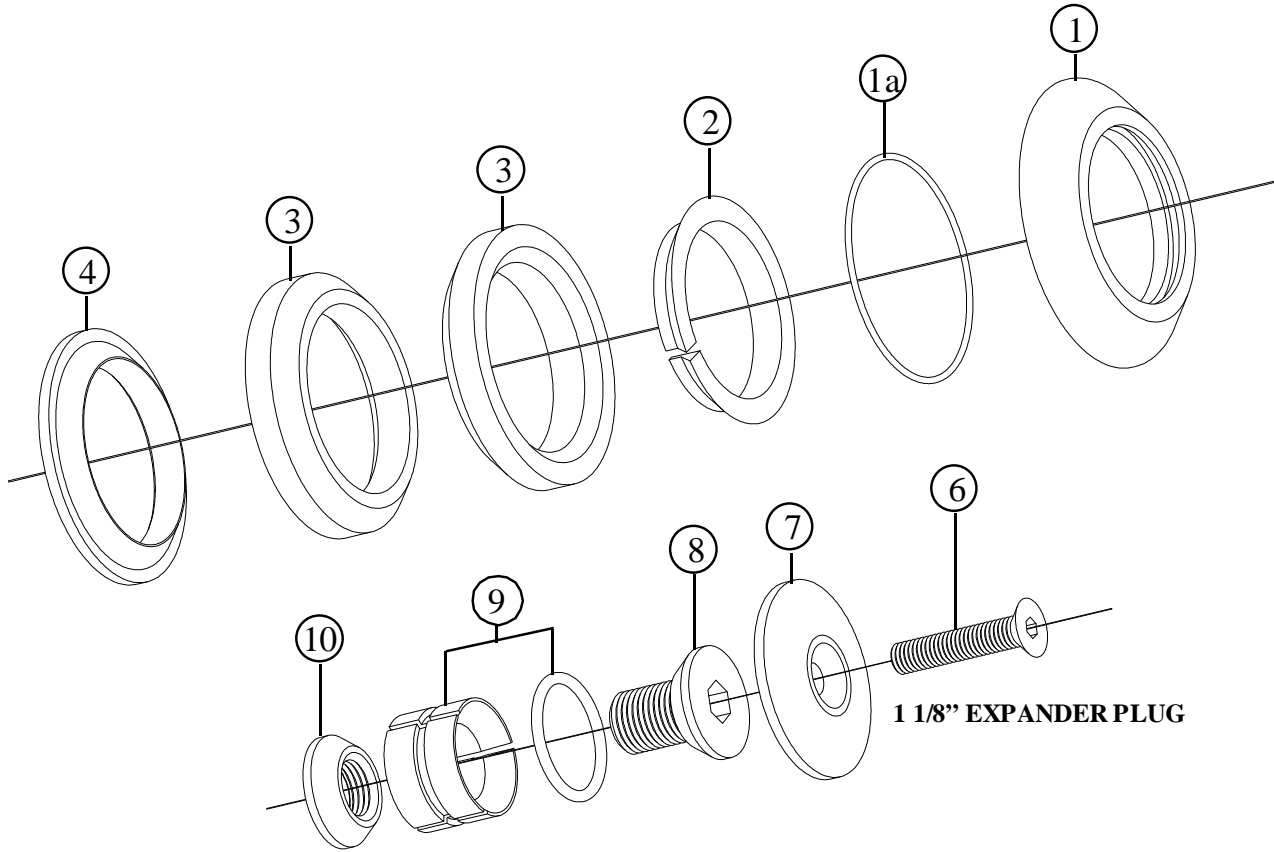
Specifications are subject to change without notice

FRM

Head Set

I-SET Pro & I-SET Team 1 1/8"

2008 Prices for Italian consumers only



Item no.	Code	DESCRIPTION	Price Euro	INTERCHANGEABILITY					
				C-Set 1"	A-Set 1"	A-Set 1 1/8"	C-Set OS	C-Set Pro	C-Set Team
1	HSI201	Upper Head Cone Housing / Light Alloy	7,00	X	X	X	X	X	X
1a	HSI210R	O-Ring	0,20	X	X	X	X	X	X
2	HSI202	Upper Head Split Cone / Light Alloy	2,30	X	X	X	X	X	X
3	TH-870	Cartridge Bearing Micro ABC 45°x45° 41,8x8mm	11,50	X	X	X	X	X	X
3	TH-870SS	As above but in Stainless Steel for the Team model	21,60	X	X	X	X	X	X
5	HSI205	Lower Head Cone	3,40	X	X	X	X	X	X
6	TSCCE525	Bolt for play adjustment M5 x 25 Cone-Head / Steel	0,20	A	A	A	A	A	B
6	TSCCE525E	As above but in light alloy (gold) for the Team model	2,30	B	B	B	B	B	A
7	EP201	Cap / Light Alloy	4,00	A	A	A	A	A	B
7	EP201C	Cap / Carbon fibre for the Team model	9,00	B	B	B	B	B	A
8	EP102	Male Cone Bolt / Light Alloy	2,00	A	A	A	A	A	A
9	EP203	Three-Piece Expander with O-Ring 122	3,50	A	A	A	A	A	A
10	EP104	Female Cone Nut / Light Alloy	1,00	A	A	A	A	A	A

Note: Modified from previous Spare Part Manual

A: Same parts

B: Parts are usable, but different in material, appearance, finish, size.

X: Non-interchangeable

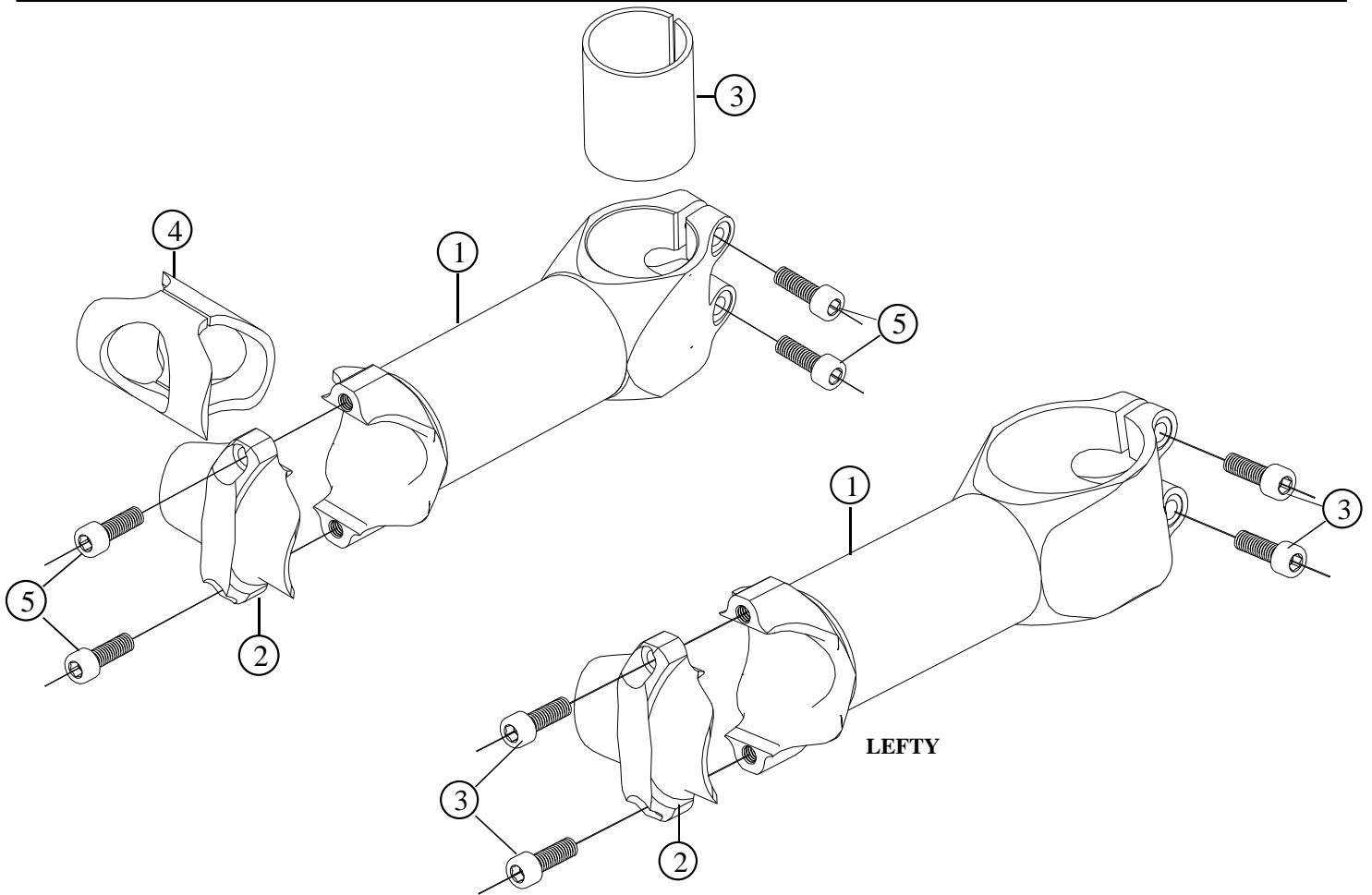
Specifications are subject to change without notice

FRM

Stem for Road & MTB

Web-Stem CF - Web-Stem FC Ti. – Web Stem 32 – Web Stem 32 Ti. Lefty Web-Stem CF – Lefty Web-Stem FC Ti.

2008 Prices for Italian consumers only



Item no.	Code	DESCRIPTION	Price Euro	INTERCHANGEABILITY		
				Web Stem	Web Stem Ti	Net Stem
1	WS05AL	Carbon fibre Stem Shaft 90 mm (Gold or Black) 31,8 mm	80,00	X	X	X
1	WS05BL	Carbon fibre Stem Shaft 100 mm (Gold or Black) 31,8 mm	80,00	X	X	X
1	WS05CL	Carbon fibre Stem Shaft 110 mm (Gold or Black) 31,8 mm	80,00	X	X	X
1	WS05DL	Carbon fibre Stem Shaft 120 mm (Gold or Black) 31,8 mm	80,00	X	X	X
1	WS05EL	Carbon fibre Stem Shaft 130 mm (Gold or Black) 31,8 mm	80,00	X	X	X
1	WS05BL	Light alloy Stem Shaft 100 mm (Black) 31,8 mm	62,00	X	X	X
1	WS05CL	Light alloy Stem Shaft 110 mm (Black) 31,8 mm	62,00	X	X	X
1	WS05DL	Light alloy Stem Shaft 120 mm (Black) 31,8 mm	62,00	X	X	X
1	WS05EL	Light alloy Stem Shaft 130 mm (Black) 31,8 mm	62,00	X	X	X
1	WS05ALL	Carbon fibre Stem Lefty Shaft 90 mm (Gold or Black) 31,8 mm	90,00	X	X	X
1	WS05BLL	Carbon fibre Stem. Lefty Shaft 100 mm (Gold or Black) 31,8mm	90,00	X	X	X
1	WS05CLL	Carbon fibre Stem. Lefty Shaft 110 mm (Gold or Black) 31,8 mm	90,00	X	X	X
1	WS05DLL	Carbon fibre Stem. Lefty Shaft 120 mm (Gold or Black) 31,8 mm	90,00	X	X	X
1	WS05ELL	Carbon fibre Stem. Lefty Shaft 130 mm (Gold or Black) 31,8 mm	90,00	X	X	X
2	WS06B	Stem Cap / Black	13,00	X	X	X
2	WS06G	Stem Cap /Gold	13,00	X	X	X
3	WS03	Sleeve from 1 1/8" to 1" fork steerer	3,00	A	A	X
4	WS04	Sleeve for 26,0 mm handlebars	8,10	X	X	X
5	TCC515S	Allen Bolt M5x15 / Steel	0,10	A	B	X
5	TCC515T	Allen Bolt M5x15 / Titanium	6,10	B	A	X

A: Same parts B: Parts are usable, but different in material, appearance, finish, size. X: Non-interchangeable

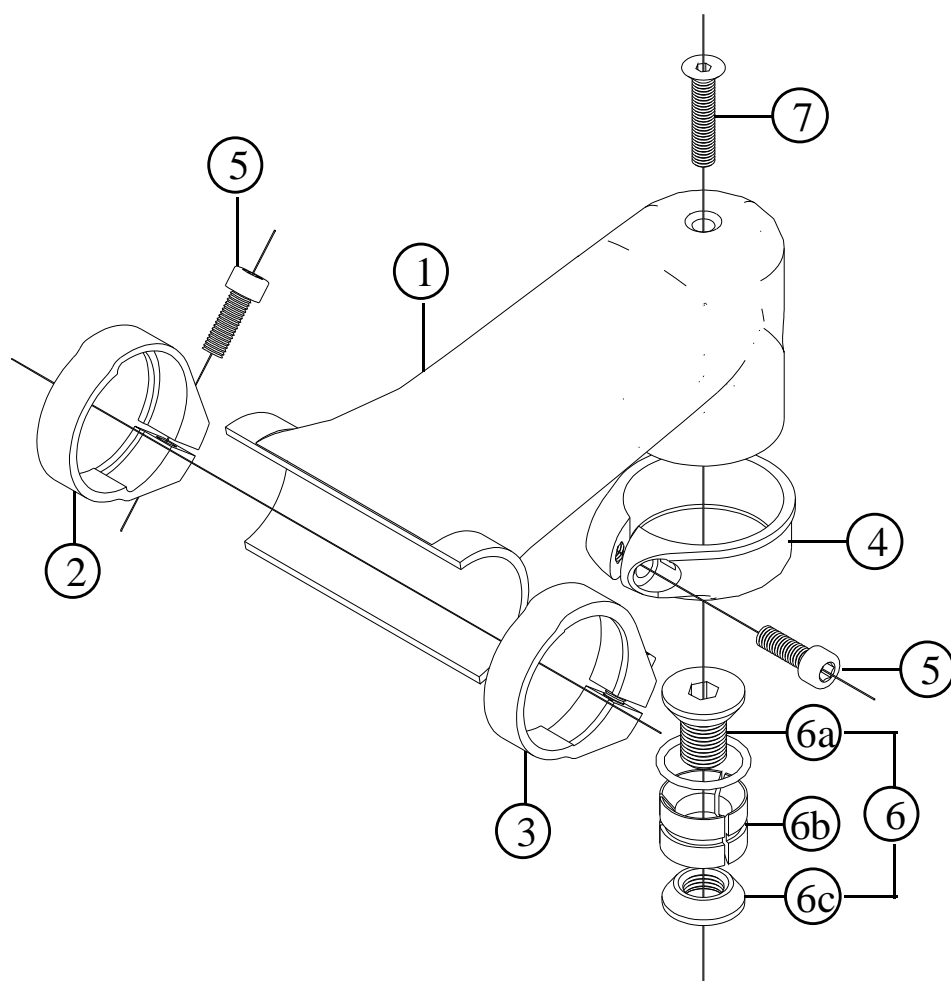
Specifications are subject to change without notice

FRM

Stem for Road

BLACK HOLE

2008 Prices for Italian consumers only



Item no.	Code	DESCRIPTION	Price Euro	INTERCHANGEABILITY			
				Web Stem	Web Stem CF Ti.	Seatpost ST-R11 ST-R21	Headset C-Set C-Set T.
1	BHSTM90	Carbon fibre Stem - Monocoque 90 mm 31,8 mm	300,00	X	X	X	X
1	BHSTM100	Carbon fibre Stem - Monocoque 100 mm 31,8 mm	300,00	X	X	X	X
1	BHSTM110	Carbon fibre Stem - Monocoque 110 mm 31,8 mm	300,00	X	X	X	X
1	BHSTM120	Carbon fibre Stem - Monocoque 120 mm 31,8 mm	300,00	X	X	X	X
1	BHSTM130	Carbon fibre Stem - Monocoque 130 mm 31,8 mm	300,00	X	X	X	X
2	BHHBCR	Right Hand Handlebar Clamp. 31,8 mm dia Black.	11,50	X	X	X	X
3	BHHBCL	Left Hand Handlebar Clamp. 31,8 mm dia Black.	11,50	X	X	X	X
4	STAC35B	SC35 Seat Clamp. 34,9 mm dia Black. Without bolt	11,50	X	X	A	X
4	STAC35G	SC35 Seat Clamp. 34,9 mm dia Gold W. Without bolt	11,50	X	X	A	X
5	TCC515T	Allen Bolt M5x15 / Titanium	6,10	X	A	A	X
6	EP100	Expander Assembly / Light Alloy	6,50	X	X	X	A
6a	EP102	Male Cone Bolt / Light Alloy	2,00	X	X	X	A
6b	EP203	Three-Piece Expander with O-Ring 122	3,50	X	X	X	A
6c	EP104	Female Cone Nut / Light Alloy	1,00	X	X	X	A
7	TSCCE525E	Bolt for play adjustment M5 x 25 Cone-Head / Light Alloy (Gold)	2,30	X	X	X	A

Note: Modified from previous Spare Part Manual

A: Same parts

B: Parts are usable, but different in material, appearance, finish, size.

X: Non-interchangeable

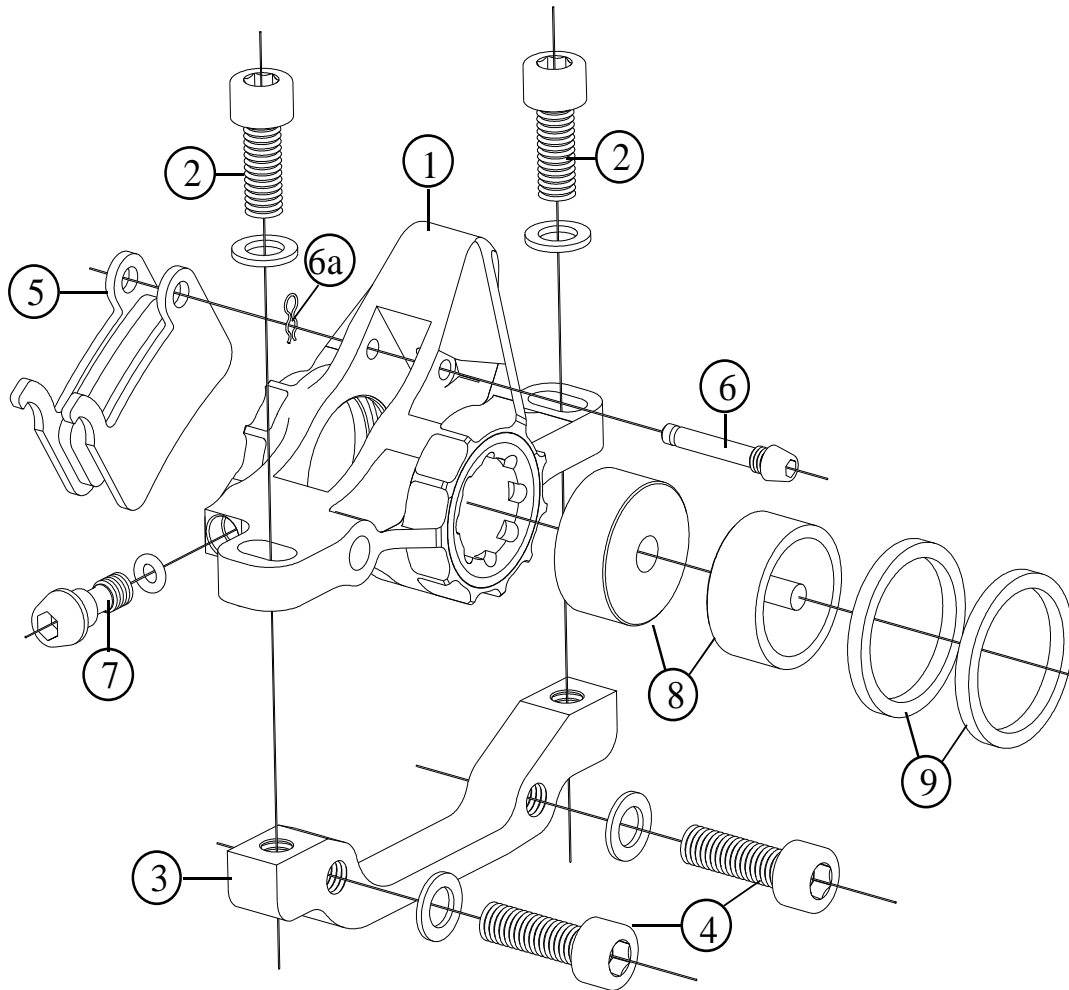
Specifications are subject to change without notice

FRM

Disc Brakes

DBR 300 & DBR 250 Caliper - New

2008 Prices for Italian consumers only



Item no.	Code	DESCRIPTION	Price Euro	INTERCHANGEABILITY	
				Shimano	XT-XTR
1	DBR300CABR	Caliper Body & Cap. Post-Mount Type. Red Anodised (DBR300 & 250)	65,00		
1	DBR300CABG	Caliper Body & Cap. Post-Mount Type. Gold Anodised (DBR300 & 250)	65,00		
2	TCC215SS	Body Fixing Bolts M6x15 & Washer. Stainless Steel (DBR300)	0,30		
2	TCC615TI	Body Fixing Bolts M6x18 & Washer. Titanium, Gold Plated (DBR250)	8,50		
3	AU01	Adapter from I.S to P-M: 160mm front or 140mm rear rotor. Bolts (4) included (DBR300 & 250)	8,60		
3	AU02	Adapter from I.S to P-M: 180mm front or 160mm rear rotor. Bolts (4) included (DBR300 & 250)	8,60		
3	AU31	Adapter for Post-Mount fork: 180mm front rotor. Bolts included (DBR300 & 250)	14,30		
4	TCC620TI	OPTIONAL: Adapter Fixing Bolts M6x18 & Washer. Titanium, Gold Plated	8,50		
5	AD014MS	Pads. XTR compat. w/spring. Metallic compound. Steel Backing (Cooper color)	20,10	B	
5	AD014SS	Pads. XTR compat. w/spring. SemiMetallic Compound. Steel Backing (Black color)	10,00	B	
5	AD014SA	Pads. XTR compat. w/spring. Semimetallic Compound. Alloy Backing (Silver color)	21,50	B	
6-6a	DBR300CB	Pads Fixing Pin. Light alloy in Gold or Red with Pin Spring (DBR300 & 250)	3,00		
7	DBR300CD	Bleed Bolt. Light Alloy & High Temperature O-Ring (DBR300 & 250)	2,50		
8	DBR300P	Pistons. 2 pieces (DBR300 & 250)	15,50		
9	DBR300S	Seals. 2 pieces (DBR300 & 250)	7,80		

A: Same parts

B: Parts are usable, but different in material, appearance, finish, size.

X: Non-interchangeable

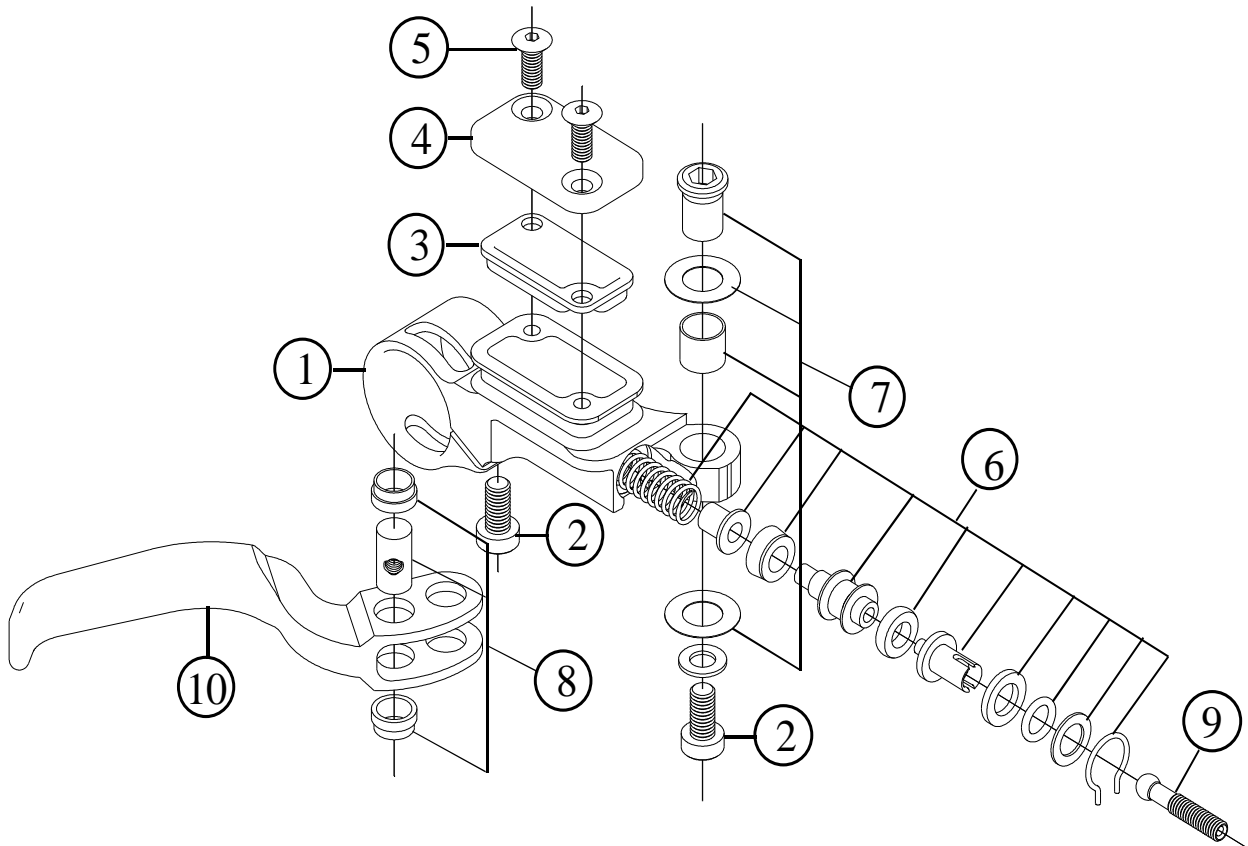
Specifications are subject to change without notice

FRM

Disc Brakes

DBR 300 & DBR 250 Brake Levers - New

2008 Prices for Italian consumers only



Item no.	Code	DESCRIPTION	Price Euro	INTERCHANGEABILITY	
1	DBR300LARR	Brake Pump Body. Right side. Red Anodised (DBR300 & 250)	45,00		
1	DBR300LARG	Brake Pump Body. Right side. Gold Anodised (DBR300 & 250)	45,00		
1	DBR300LALR	Brake Pump Body. Left side. Red Anodised (DBR300 & 250)	45,00		
1	DBR300LALG	Brake Pump Body. Left side. Gold Anodised (DBR300 & 250)	45,00		
2	TCC510S	Allen Bolt M5x10mm. Stainless Steel (DBR300)	0,15		
2	TX510TI	Torx Bolt M5x10mm. Light Alloy (DBR250)	2,10		
3	DBR300RM	Reservoir Membrane. EPDR Rubber (DBR300 & 250)	2,00		
4	DBR300LB	Reservoir Cap. Light Alloy (DBR300 & 250)	7,00		
5	TSCCE45S	Come Head Bolt. M4x5mm. Stainless Steel (DBR300)	0,05		
5	TSCCE4LAR	Come Head Bolt. M4x5mm. Light Alloy, Red Anodised (DBR250)	1,10		
5	TSCCE4LAG	Come Head Bolt. M4x5mm. Light alloy, Gold Anodised (DBR250)	1,10		
6	DBR300PK	Piston Kit. Piston Parts, Seals, Washers and Springs (DBR300 & 250)	22,30		
7	DBR300BLBA	Brake Lever Bushing & Axle	7,00		
8	DBR300BLPRA	Brake Lever Push Rod Axle & Bushings	7,00		
9	DBR300BLPR	Brake Lever Push Rod	3,00		
10	DBR300BL	Brake Lever. Right or Left. Light Alloy. Black Anodised (DBR300&250)	25,00		

A: Same parts

B: Parts are usable, but different in material, appearance, finish, size.

X: Non-interchangeable

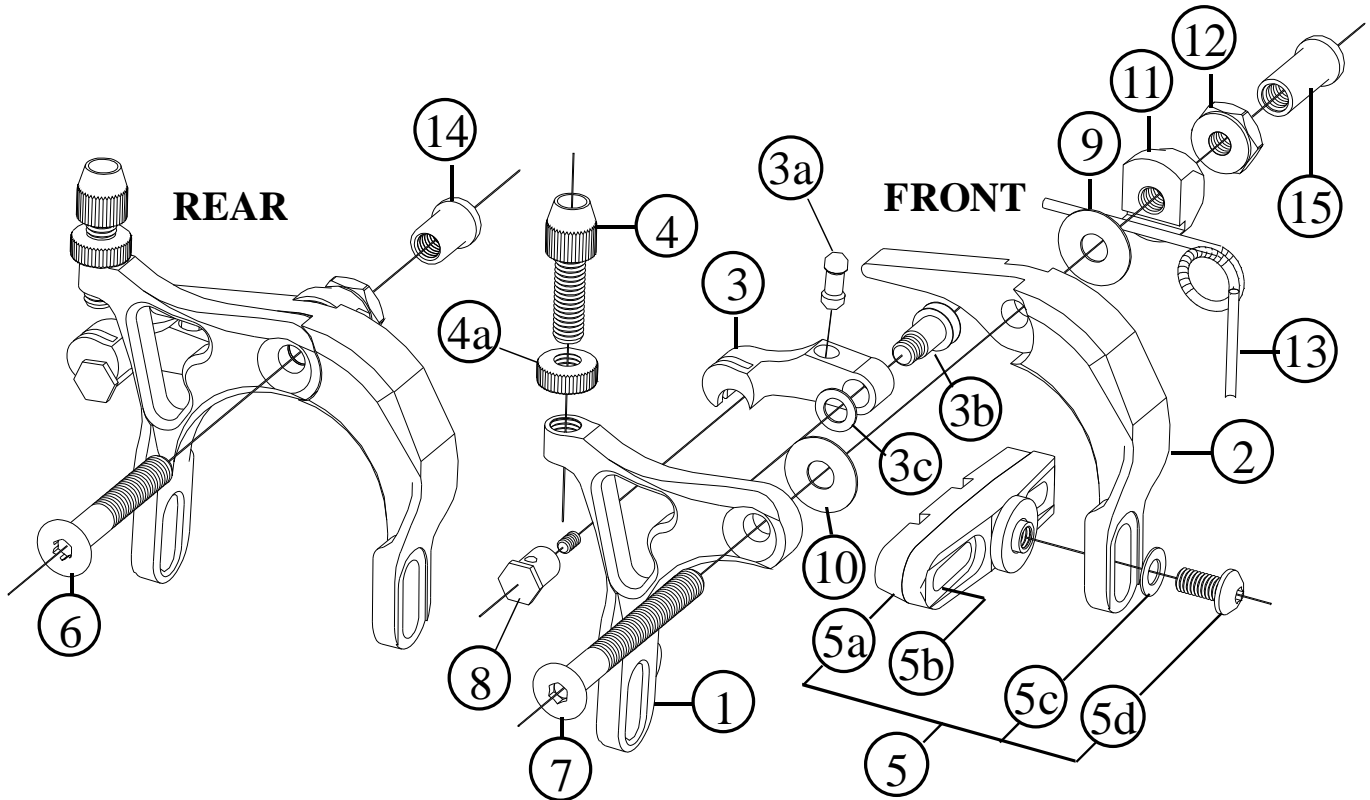
Specifications are subject to change without notice

FRM

Brakes for Road

CL2, CL2 Ti., CL2 Team Brakes

2008 Prices for Italian consumers only



Item no.	Code	DESCRIPTION	Price Euro	INTERCHANGEABILITY		
				Caliper 2004	CL2 05-07	XXXX
1	CL2AF	A Arm (Front)	18,00	X	A	
2	CL2BF	B Arm (Front)	18,00	X	A	
3	CL2C	C Arm (Front)	12,60	X	A	
3a	CL2CA	Push-Rod (Steel)	1,80	X	A	
3b	CL2CB	C-Arm Pivot (Steel)	2,00	X	A	
3c	CL2CC	Pivot Washer (9x6x0,5 mm)	0,30	X	A	
4	CL201	Cable Adjusting Barrel (M6)	3,00	X	A	
4a	CL202	Cable Adjusting Nut	2,00	X	A	
5	CL2-PH	Pad Holder. Light Alloy / Steel Bolt & CL2 Multistage P	Set of 2 pcs 12,00	B	B	
5	CL2-PH Ti.	Pad Holder Skeleton type. Titanium Bolt & CL2 Multistage Pad	Set of 2 pcs 37,70	B	B	
5	CL2-PH Team	Pad Holder. Carbon fibre body / Titanium Bolt & CL2 Multistage Pads	Set of 2 pcs 83,10	B	B	
5a	461	Replacement Pads CL2 Multistage 3 Color	Set of 2 pcs 7,70	B	B	
5a	2006-05-04	Corima Replacement Pads for Carbon Fibre Rims	Set of 2 pcs 14,80	B	A	
5d	TCC510Ti.	Pad Holder Fixing Bolt in Titanium (Button Head, M5x10 mm)	6,50	B	A	
6	CL204	Rear Brake Axle in Steel (M6x40 mm)	5,00	X	A	
6	CL204Ti.	Rear Brake Axle in Titanium (M6x40 mm)	11,00	X	A	
7	CL205	Front Brake Axle in Steel (M6x55 mm)	6,50	X	A	
7	CL205Ti.	Front Brake Axle in Titanium (M6x55 mm)	13,00	X	A	
8	CL210	Cable Anchor (Light Alloy)	3,60	X	A	
9	WD016	Plastic Washer (16x6x0,6 mm)	0,50	X	A	
10	WD0161	Plastic Washer (16x6x1 mm)	0,50	X	A	
11	CL206	Spring Holder (Light Alloy)	2,50	A	A	
12	CL207	Lock-Nut (Light Alloy)	1,50	X	A	
13	CL2RS	Steel Spring	0,80	X	A	
14	CL209	Rear Axle Lock-Nut (Short)	3,00	X	A	
15	CL208	Front Axle Lock-Nut (Long)	3,00	X	A	

Note: Modified from previous Spare Part Manual

A: Same parts

B: Parts are usable, but different in material, appearance, finish, size.

X: Non-interchangeable

Specifications are subject to change without notice

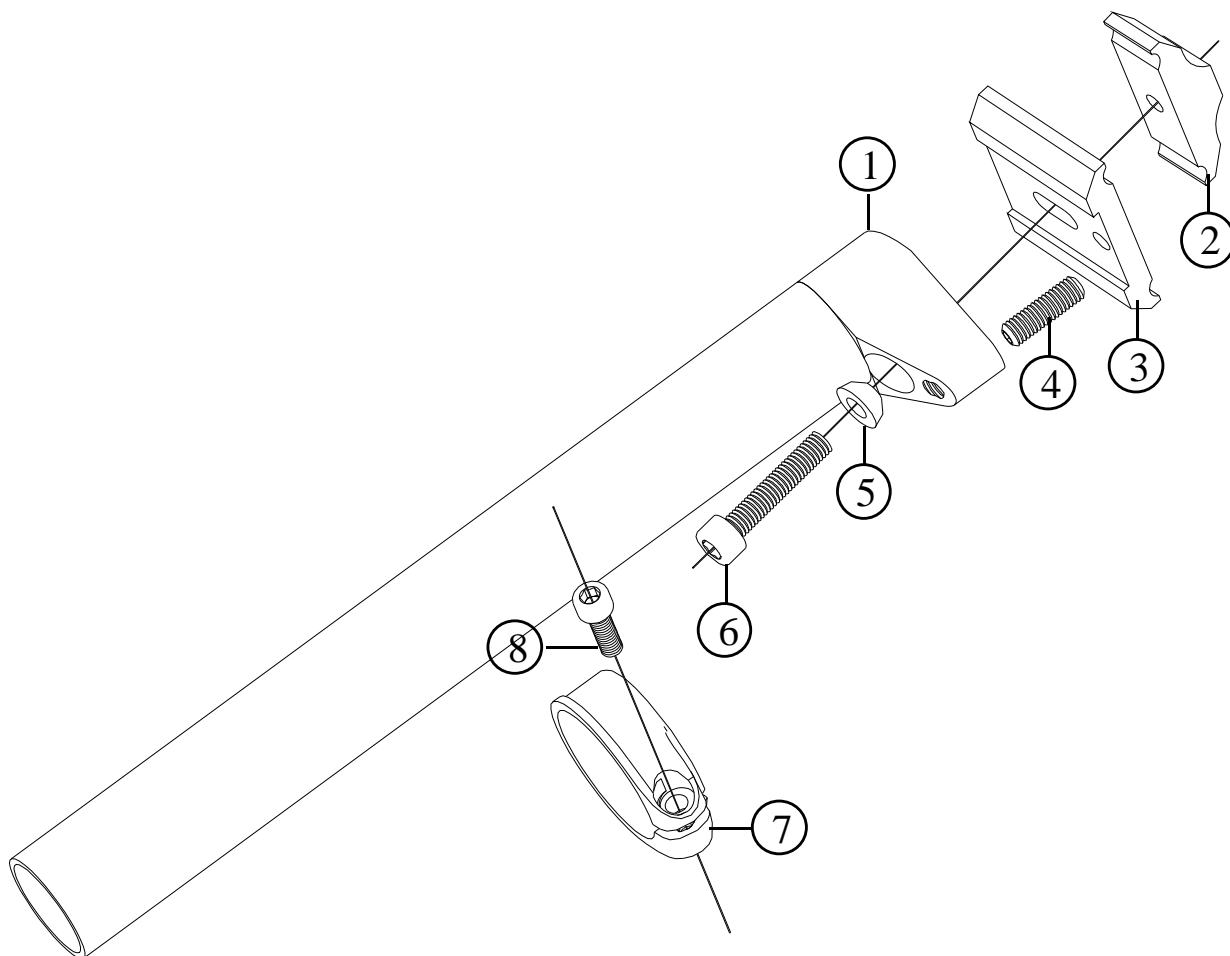
FRM

Seatpost and Seat Collar for Road & MTB

ST-R21 Carbon ST-R21 Carbon Ti.

ST-M21 Carbon ST-M21 Carbon Ti.

2008 Prices for Italian consumers only



Item no.	Code	DESCRIPTION	Price Euro	INTERCHANGEABILITY				
				ST-M10 ST-M20	ST-M11	ST-M21 Carbon	ST-R11	ST-R21 Carbon
1	STR211B	Carbon Fibre Post 27,2 x 250 mm (ST-R21 Carbon)	80,00	X	X	X	B	-
1	STM211B	Carbon Fiber Post 27,2 x 350 mm (ST-M21 Carbon)	105,00	X	B	-	X	X
2	STOS03	Rails Clamp for M6 Steel Bolt (Silver anodised)	10,00	X	A	B	A	A
2	STOS03T	Rails Clamp for M7 Titanium Bolt (Black anodised)	10,00	X	B	A	B	A
3	STOS02	Rails Platform / Light Alloy	13,00	X	A	A	A	A
4	STOS04	Dowel	0,10	X	A	A	A	A
5	STOS05	Half-Ball / Light Alloy for M6 Steel Bolt	1,00	X	A	A	A	A
6	TCC630	Allen Bolt M6x35 mm /Steel	0,35	X	A	B	A	B
6	TCC730T	Allen Bolt M7x35 mm in Titanium	13,10	X	B	A	B	A
7	STAC35B	SC35 Seat Clamp. 34,9 mm dia Black. Without Bolt	11,50					
7	STAC35G	SC35 Seat Clamp. 34,9 mm dia Gold. Without Bolt	11,50					
7	STAC32B	SC32 Seat Clamp. 31,6 mm dia Black. Without Bolt	11,50					
7	STAC32G	SC32 Seat Clamp. 31,6 mm dia Gold. Without Bolt	11,50					
8	TCC515S	Allen Bolt M5x15 / Steel	0,10					
8	TCC515T	Allen Bolt M5x15 / Titanium	6,10					

A: Same parts

B: Parts are usable, but different in material, appearance, finish, size.

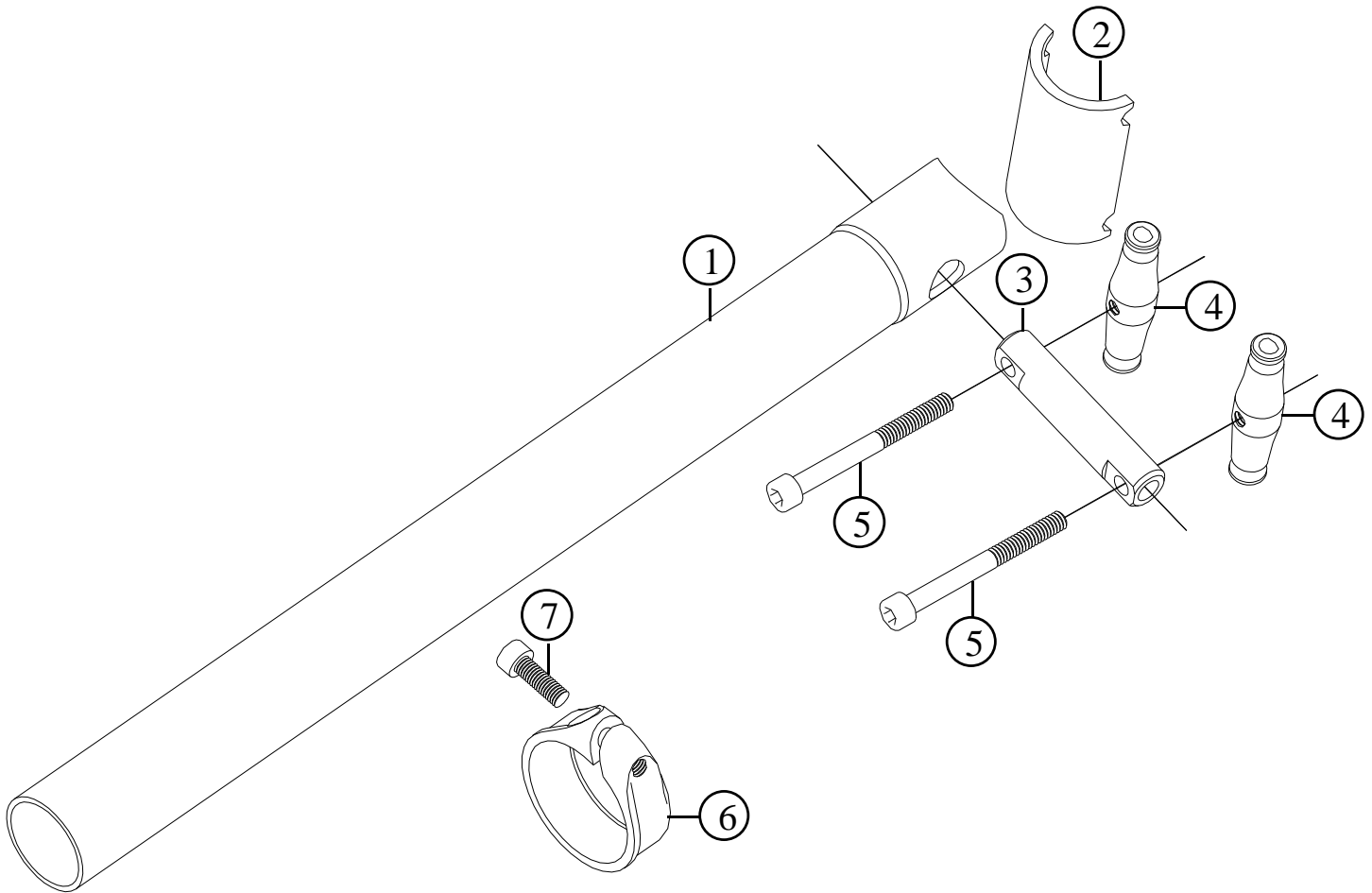
X: Non-interchangeable

Specifications are subject to change without notice

FRM

Seatpost for MTB

ST-M10 **ST-M10 OS** **ST-M10 Ti.** **ST-M10 OS Ti.** **ST-M20 Carbon Ti.**
2008 Prices for Italian consumers only



Item no.	Code	DESCRIPTION	Price Euro	INTERCHANGEABILITY				
				ST-M9	ST-M11	ST-R11	ST-R21	Black Hole
1	STM101B	Light Alloy Post 27,2 x 350 mm . Externally double butted - ST-M10	40,00	X	X	X	X	X
1	STM101C	Light Alloy Post 30,9 x 350 mm . Externally double butted - ST-M10	49,30	X	X	X	X	X
1	STM101D	Light Alloy Post 31,6 x 350 mm . Externally double butted - ST-M10	49,30	X	X	X	X	X
1	STM201B	Carbon Fiber Post 27,2 x 350 mm - ST-M20 Carbon Ti.	92,00	X	X	X	X	X
2	STM102	Rails Cradle for Steel Bolts. Light Alloy. Black anodised	6,00	X	X	X	X	X
2	STM102C	Rails Cradle for Titanium Bolts Light Alloy. Red anodised	8,00	X	X	X	X	X
3	STM103	Pin for Steel Bolts. Silver anodised	6,00	X	X	X	X	X
3	STM103T	Pin for Titanium bolts. Black anodised	6,50	X	X	X	X	X
4	STM104	Rail Clamp for M5 Steel Bolts. Silver	6,00	X	X	X	X	X
4	STM104T	Rail Clamp for M6 Titanium Bolts. Black	6,00	X	X	X	X	X
5	TCC550	Allen Bolt M5x50 mm in Steel	0,35	X	X	X	X	X
5	TCC558T	Allen bolt M6x50 mm in Titanium	13,00	X	X	X	X	X
6	STAC35B	SC35 Seat Clamp. 34,9 mm dia Black. Without Bolt	11,50					
6	STAC35G	SC35 Seat Clamp. 34,9 mm dia Gold. Without Bolt	11,50					
6	STAC32B	SC32 Seat Clamp. 31,6 mm dia Black. Without Bolt	11,50					
6	STAC32G	SC32 Seat Clamp. 31,6 mm dia Gold. Without Bolt	11,50					
7	TCC515S	Allen Bolt M5x15 / Steel	0,10					
7	TCC515T	Allen Bolt M5x15 / Titanium	6,10					

Note: Modified from previous Spare Part Manual

A: Same parts

B: Parts are usable, but different in material, appearance, finish, size.

X: Non-interchangeable

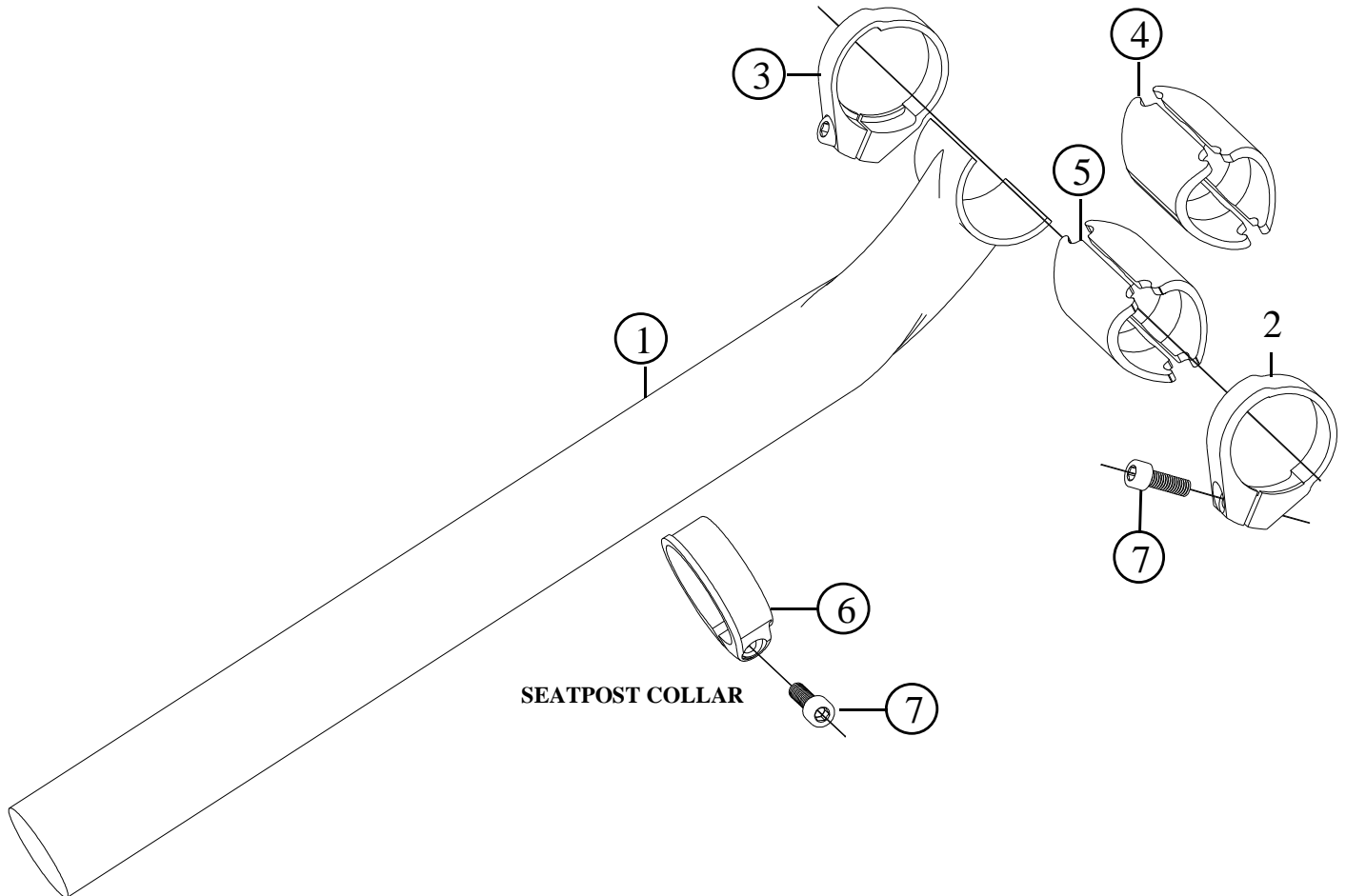
Specifications are subject to change without notice

FRM

Seatpost for Road & MTB

ST-R Black Hole ST-M Black Hole

2008 Prices for Italian consumers only



SEATPOST COLLAR

Item no.	Code	DESCRIPTION	Price Euro	INTERCHANGEABILITY			
				ST-M11	ST-R11	ST-M21	ST-R21
1	STMRH	Seatpost 31,6x250mm. Carbon Fibre	250,00	X	X	X	X
1	STMBH	Seatpost 31,6x350mm. Carbon fibre	250,00	X	X	X	X
2	STBHCR	Right Hand Clamp. Black anodised	11,50	X	X	X	X
3	STBHCL	Left Hand Clamp. Black anodised	11,50	X	X	X	X
4	STBHRS	Craddle for regular railed saddles. Asymmetric. Titan anodised (2pcs)	14,00	X	X	X	X
5	STBHBHS	Claddel specific for FRM Black Hole Saddle. Black anodised (2pcs)	14,00	X	X	X	X
6	STAC35B	SC35 Seat Clamp. 34,9 mm dia Black. Without Bolt	11,50				
6	STAC35G	SC35 Seat Clamp. 34,9 mm dia Gold W. Without Bolt	11,50				
7	TCC515T	Allen Bolt M5x15 / Titanium	6,10				

Note: Modified from previous Spare Part Manual

A: Same parts

B: Parts are usable, but different in material, appearance, finish, size.

X: Non-interchangeable

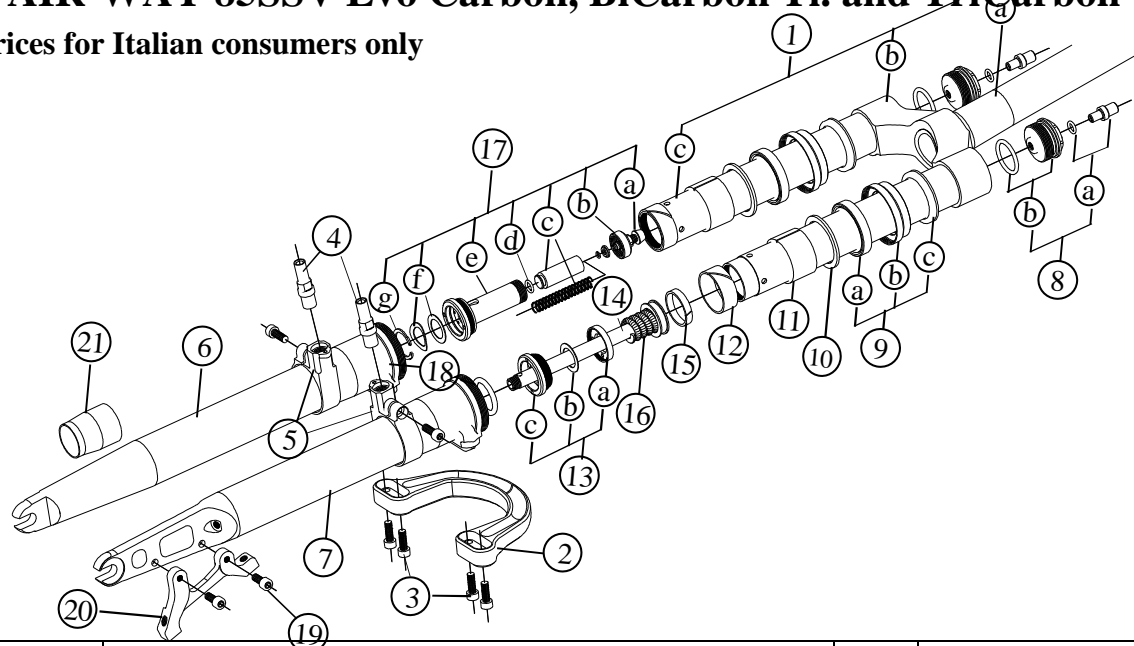
Specifications are subject to change without notice

FRM

MTB Suspension Fork

AIR-WAY 85SSV Evo Carbon, BiCarbon Ti. and TriCarbon Ti.

2008 Prices for Italian consumers only



Item no.	Code	DESCRIPTION	Price Euro	INTERCHANGEABILITY			
				Air-Way 110SSV	Air-Way 90SSV	Air-Way 83RB	Air-Way 100
1	06E30	Crown Assembly / Light Alloy Steerer Tube (85SSV Carbon)	231,00	X	X	X	X
1	06CE30	Crown Assembly / Carbon Fibre Steerer Tube (85SSV Bi & TriCarbon)	308,00	X	X	X	X
2	03RBEVO	Reversed Brace / Light Alloy	68,00	X	X	A	X
3	TCC512S	Brace Fixing Bolt / Allen M5x12 mm / Steel	0,10	A	A	A	A
3	TCC512Ti	Brace Fixing Bolt / Allen M5x12 mm / Titanium	6,10	A	A	A	A
4	05S	Brake Stud / Light Alloy M10x8 mm (V-Brake model only)	4,00	X	X	A	X
5	05C	Right Hand or Left Hand V-Brake Replaceable Collars (V-Brake model only)	10,00	X	X	A	X
6	01RBC30EVO	Right Lower Leg / Carbon Fibre	151,00	X	X	X	X
7	02RBC30EVO	Left Lower Leg / Carbon Fibre	174,00	X	X	X	X
8	21A30	Air Valve Assembly	11,00	A	A	X	X
8a	21D	Air Valve & O-Ring 2025 (I.D. 6,07x1,78 mm)	5,00	A	A	X	X
8b	21B30	Air Valve Body & O-Ring 128 (I.D. 20,63x 1,78 mm)	6,00	A	A	X	X
9	AW30SA	Seals Assembly	11,00	A	A	X	A
9b	1730	Oil Seal Lock Ring / Light Alloy	5,00	A	A	X	A
9a	16N	Oil Seal 30x40x7 mm TTO	3,00	A	A	X	A
9c	SA30	Dust Seal	3,00	A	A	X	A
10	15N	Shim / Light Alloy 37,5x30x2 mm	1,50	A	A	X	A
11	14N	Upper Bushing / Iglodur W300 34x30x20 mm	6,50	A	A	X	A
12	13N	Lower Bushing / Polyzene 31,75x29,1x12 mm	4,00	A	A	X	X
13	07SP	Oil Valve Assembly	7,20	A	A	X	X
13a	07SPA	Oil Valve Cap	1,50	A	A	X	X
13b	07SPB	Oil Valve Shim—Steel 21,8x14,8x0,3mm	0,20	A	A	X	X
13c	07SPC	Oil Valve Body / Synthetic	5,50	A	A	X	X
14	08SP	Piston/Shaft/Spring Assembly. 128mm long shaft / Light Alloy	16,00	X	X	X	X
15	11SP	Piston Seal FG 15049 4,9x1,5 mm	0,50	A	A	X	A
16	09SP	Negative – Top-Out Spring—Green 18,4 x 25 mm	3,00	A	A	X	X
17	SSV	SSV Valve Assembly	15,00	A	A	X	X
17a	SSVA	Bolt in Light Alloy with Spring Plate and Circlip	3,00	A	A	X	X
17b	SSVB	SSV Valve Cap—Synthetic	1,50	A	A	X	X
17c	SSVC	SSV Piston and Spring dia. 8,6x50 mm	3,50	A	A	X	X
17d	SSVD	O-Ring 2031	-	A	A	X	X
17e	SSVE	SSV Body	6,40	A	A	X	X
17f	SSVF	Steel Shims 21,8x14,8x0,3 mm (One flat – One bent)	0,50	A	A	X	X
17g	SSVG	Seeger 22V1	0,10	A	A	X	X
18	10A	Bottom-Out Damper / O-Ring	0,50	A	A	X	A
19	24A	Disc Mount Fixing Bolt / Allen M5 x12 mm. Steel	0,10	A	A	X	X
19	TCC512Ti	Disc Mount Fixing Bolt / Allen M5x12 mm. Titanium	6,10	A	A	X	A
20	AW1	Post-Mount AW1 Disc Brake Mount for 160mm rotors / Light Alloy	18,20	X	X	X	X
21	OST30	Oil Seal Tool for 30 mm stanchions	4,00	A	A	X	X
		Motul Fork Oil Factory Line – Light 5W 200 cc	11,80	A	A	A	A
		Motul Fork Oil Factory Line – Light 5W 1.000 cc	25,40	A	A	A	A

A: Same parts B: Parts are usable, but different in material, appearance, finish, size, etc. X: Non-interchangeable

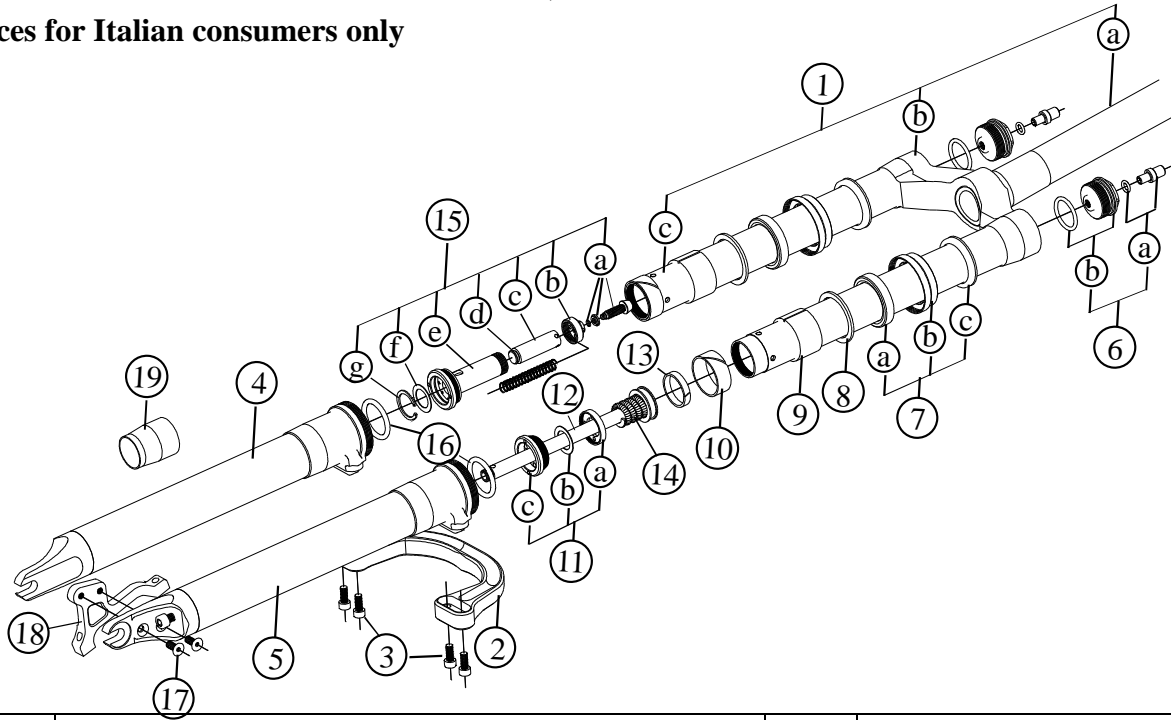
Specifications are subject to change without notice

FRM

MTB Suspension Fork

AIR-WAY 90SSV Carbon, BiCarbon and BiCarbon Ti.

2008 Prices for Italian consumers only



Item no.	Code	DESCRIPTION	Price Euro	INTERCHANGEABILITY			
				Air-Way 110SSV	Air-Way 85SSV	Air-Way 83 RB	Air-Way 100
1	06M30	Crown Assembly / Light Alloy Steerer Tube (90SSV Carbon)	270,00	X	X	X	X
1	06CM30	Crown Assembly / Carbon Fibre Steerer Tube (90SSV BiCarbon)	351,00	X	X	X	X
2	03N06	Reversed Brace / Light Alloy	68,00	A	X	X	X
3	04	Brace Fixing Bolt / Allen M5x12mm / Steel	0,25	A	X	X	X
3	04T	Brace Fixing Bolt / Allen M5x12mm / Titanium	6,10	A	X	X	X
4	01CN07	Right Lower Leg / Carbon Fibre	185,00	A	X	X	X
5	02CN07	Left Lower Leg / Carbon Fibre (Post-Mount dropout)	221,00	A	X	X	X
6	21A30	Air Valve Assembly	11,00	A	A	X	X
6a	21D	Air Valve & O-Ring 2025 (I.D. 6,07x1,78 mm)	5,00	A	A	X	X
6b	21B30	Air Valve Body & O-Ring 128 (I.D. 20,63x 1,78 mm)	6,00	A	A	X	X
7	AW30SA	Seals Assembly	11,00	A	A	X	A
7b	1730	Oil Seal Lock Ring / Light Alloy	5,00	A	A	X	A
7a	16N	Oil Seal 30x40x7 mm TTO	3,00	A	A	X	A
7c	SA30	Dust Seal	3,00	A	A	X	A
8	15N	Shim / Light Alloy 37,5x30x2 mm	1,50	A	A	X	A
9	14N	Upper Bushing / Iglodur W300 34x30x20 mm	6,50	A	A	X	A
10	13N	Lower Bushing / Polyzene 31,75x29,1x12 mm	4,00	A	A	X	X
11	07SP	Oil Valve Assembly	7,20	A	A	X	X
11a	07SPA	Oil Valve Cap	1,50	A	A	X	X
11b	07SPB	Oil Valve Shim—Steel 21,8x14,8x0,3mm	0,20	A	A	X	X
11c	07SPC	Oil Valve Body / Synthetic	5,50	A	A	X	X
12	08MSP	Piston/Shaft/Spring Assembly. 183mm long Shaft / Light Alloy	17,00	X	X	X	X
13	11SP	Piston Seal FG 15049 4,9x1,5 mm	0,50	A	A	X	X
14	09SP	Negative – Top-Out Spring—Green 18,4 x 25 mm	3,00	A	A	X	X
15	SSV	SSV Valve Assembly	15,00	A	A	X	X
15a	SSVA	Bolt in Light Alloy with Spring Plate and Circlip	3,00	A	A	X	X
15b	SSVB	SSV Valve Cap—Synthetic	1,50	A	A	X	X
15c	SSVC	SSV Piston and Spring dia. 8,6x50 mm	3,50	A	A	X	X
15d	SSVD	O-Ring 2031	-	A	A	X	X
15e	SSVE	SSV Body	6,40	A	A	X	X
15f	SSVF	Steel Shims 21,8x14,8x0,3 mm (One flat – One bent)	0,50	A	A	X	X
15g	SSVG	Seeger 22V1	0,10	A	A	X	X
16	10A	Bottom-Out Damper / O-Ring	0,50	A	A	A	A
17	24A	Disc Mount Fixing Bolt / Cone Head M5 x12mm	0,15	A	X	X	X
18	AW2	Post-Mount AW2 Disc Brake Mount for 160mm rotors/ Light Alloy	18,20	B	X	X	X
19	OST30	Oil Seal Tool for 30 mm stanchions	4,00	A	A	X	A
		Motul Fork Oil Factory Line – Light 5W 200 cc	11,80	A	A	A	A
		Motul Fork Oil Factory Line – Light 5W 1.000 cc	25,40	A	A	A	A

A: Same parts B: Parts are usable, but different in material, appearance, finish, size, etc. X: Non-interchangeable

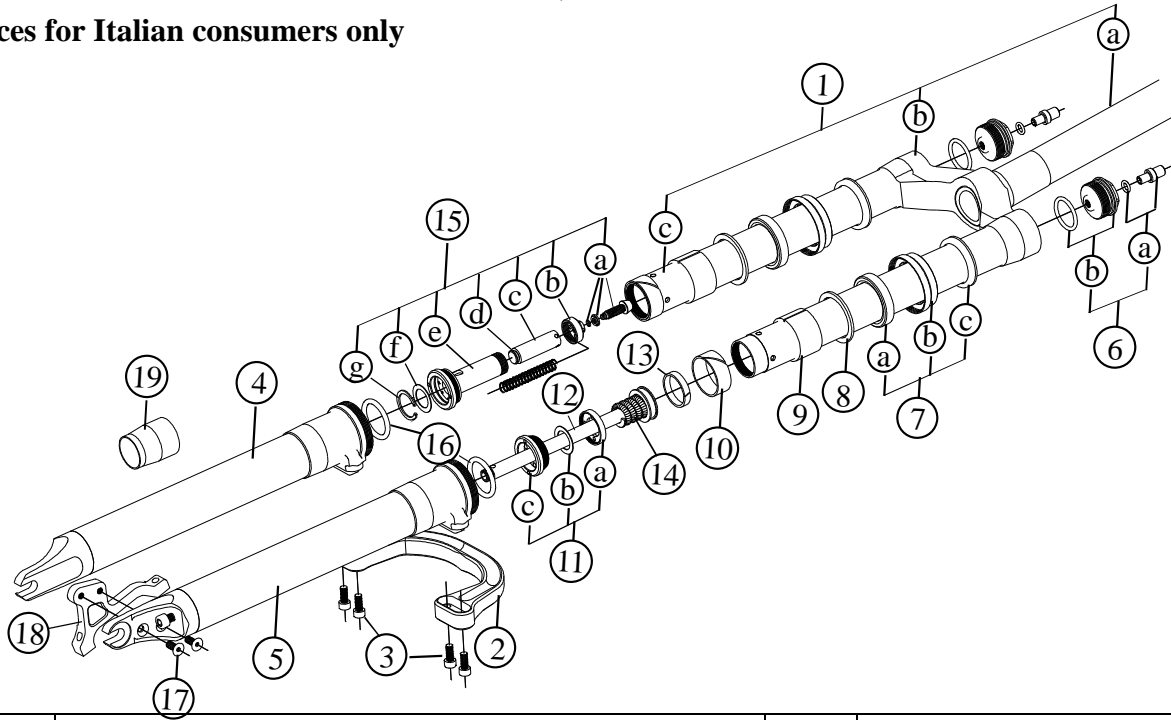
Specifications are subject to change without notice

FRM

MTB Suspension Fork

AIR-WAY 110SSV Carbon, BiCarbon and BiCarbon Ti.

2008 Prices for Italian consumers only



Item no.	Code	DESCRIPTION	Price Euro	INTERCHANGEABILITY			
				Air-Way 90SSV	Air-Way 85SSV	Air-Way 83 RB	Air-Way 100
1	06N30	Crown Assembly / Light Alloy Steerer Tube (110SSV Carbon)	270,00	X	X	X	X
1	06CN30	Crown Assembly / Carbon Fibre Steerer Tube (110SSV BiCarbon)	351,00	X	X	X	X
2	03N06	Reversed Brace / Light Alloy	68,00	A	X	X	X
3	04	Brace Fixing Bolt / Allen M5x12mm / Steel	0,25	A	X	X	X
3	04T	Brace Fixing Bolt / Allen M5x12mm / Titanium	6,10	A	X	X	X
4	01CN07	Right Lower Leg / Carbon Fibre	185,00	A	X	X	X
5	02CN07	Left Lower Leg / Carbon Fibre (Post-Mount dropout)	221,00	A	X	X	X
6	21A30	Air Valve Assembly	11,00	A	A	X	X
6a	21D	Air Valve & O-Ring 2025 (I.D. 6,07x1,78 mm)	5,00	A	A	X	X
6b	21B30	Air Valve Body & O-Ring 128 (I.D. 20,63x 1,78 mm)	6,00	A	A	X	X
7	AW30SA	Seals Assembly	11,00	A	A	X	A
7b	1730	Oil Seal Lock Ring / Light Alloy	5,00	A	A	X	A
7a	16N	Oil Seal 30x40x7 mm TTO	3,00	A	A	X	A
7c	SA30	Dust Seal	3,00	A	A	X	A
8	15N	Shim / Light Alloy 37,5x30x2 mm	1,50	A	A	X	A
9	14N	Upper Bushing / Iglodur W300 34x30x20 mm	6,50	A	A	X	A
10	13N	Lower Bushing / Polyzene 31,75x29,1x12 mm	4,00	A	A	X	X
11	07SP	Oil Valve Assembly	7,20	A	A	X	X
11a	07SPA	Oil Valve Cap	1,50	A	A	X	X
11b	07SPB	Oil Valve Shim—Steel 21,8x14,8x0,3mm	0,20	A	A	X	X
11c	07SPC	Oil Valve Body / Synthetic	5,50	A	A	X	X
12	08NSP	Piston/Shaft/Spring Assembly. 151mm long Shaft / Light Alloy	17,00	X	X	X	X
12	11SP	Piston Seal FG 15049 4,9x1,5 mm	0,50	A	A	X	X
14	09SP	Negative – Top-Out Spring—Green 18,4 x 25 mm	3,00	A	A	X	X
15	SSV	SSV Valve Assembly	15,00	A	A	X	X
15a	SSVA	Bolt in Light Alloy with Spring Plate and Circlip	3,00	A	A	X	X
15b	SSVB	SSV Valve Cap—Synthetic	1,50	A	A	X	X
15c	SSVC	SSV Piston and Spring dia. 8,6x50 mm	3,50	A	A	X	X
15d	SSVD	O-Ring 2031	-	A	A	X	X
15e	SSVE	SSV Body	6,40	A	A	X	X
15f	SSVF	Steel Shims 21,8x14,8x0,3 mm (One flat – One bent)	0,50	A	A	X	X
15g	SSVG	Seeger 22V1	0,10	A	A	X	X
16	10A	Bottom-Out Damper / O-Ring	0,50	A	A	A	A
17	24A	Disc Mount Fixing Bolt / Cone Head M5 x12mm	0,15	A	X	X	X
18	AW3	Post-Mount AW3 Disc Brake Mount for 180mm rotors/ Light Alloy	18,20	B	X	X	X
19	OST30	Oil Seal Tool for 30 mm stanchions	4,00	A	A	X	A
		Motul Fork Oil Factory Line – Light 5W 200 cc	11,80	A	A	A	A
		Motul Fork Oil Factory Line – Light 5W 1.000 cc	25,40	A	A	A	A

A: Same parts B: Parts are usable, but different in material, appearance, finish, size, etc. X: Non-interchangeable

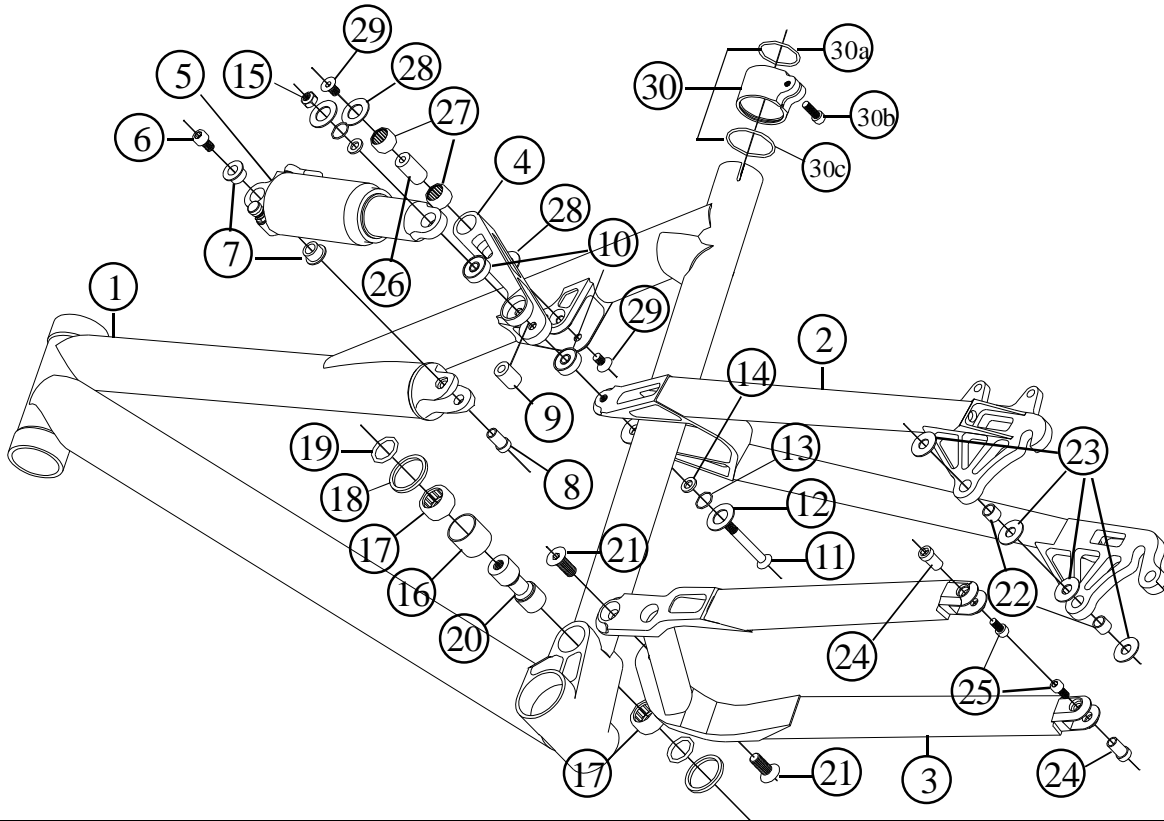
Specifications are subject to change without notice

FRM

Suspension Frame

12 HP

2008 Prices for Italian consumers only



Item no.	Code	DESCRIPTION	Price Euro	INTERCHANGEABILITY		
				Be Active Plus	10HP	Be Mad
1	12HPMF06	Main Frame Black anodised (17,5" –19" – 20,5")	600,00	X	X	X
2	SSBAP03	Seat-Stay Assembly	200,00	A	X	X
3	CSBAP03	Chain-Stay Assembly	200,00	A	X	X
4	12HPSL06	Swing Link (Gold anodised)	29,00	X	X	X
5	XFO2P165	Rear Shock Rock Shox Monarch Stable Platform (165 mm eye to eye)	265,90	A	A	X
6	TCE610	Allen Bolt M6 x 10 mm	0,14	X	A	X
7	UESBAXF	Spacer of Shock Upper Eye (2 pcs) Specify Shock Type	1,00 pc	A	A	X
8	HLP03	Axle of the Shock Upper Eye (Light Alloy)	2,14	X	A	X
9	LEAXF	Axle of Shock Lower Eye. Specify Shock type	1,00	A	A	A
10	BB1966	Ball Bearing 19x6x62RS (2 pcs)	2,50 pc	X	A	X
11	TSE650	Cone-Headed Bolt M6x50 mm (Non Commercial - Special Design)	6,30	X	X	X
12	WD022	Plastic Washer dia. 22 mm (2 pcs)	0,56 pc	A	A	X
13	OR12085	O-Ring 11,7x0,85 (2pcs)	0,10 pc	X	X	X
14	SW1215	Steel Washer 12x1,5 mm (6pcs)	0,05 pc	X	A	X
15	SNM6	Self-Locking nut M6	0,09	A	A	A
16	MPRS	Bearings Spacer	1,00	A	A	A
17	MPR96	Main Pivot Needle Bearing (2pcs)	6,50 pc	A	A	A
18	WD030	Plastic Washer dia. 30 mm (2pcs)	0,75 pc	A	A	A
19	ORD22	O-Ring dia. 22 mm (2pcs)	0,14 pc	A	A	A
20	MPA97	Main Pivot Axle (Light Alloy with Steel Sleeves)	9,70	A	A	A
21	TSE820	Cone-Headed Bolt M8x20 (2 pcs)	0,23 pc	A	A	A
22	HLB96	DU Horst Link Bushing (2 pcs)	0,61 pc	A	X	A
23	WD018	Plastic Washer dia. 18 mm (4 pcs)	0,52 pc	A	X	A
24	HLP96	Horst Link Axle (2pcs)	2,14 pc	A	X	X
25	TCE610	Allen Bolt M6x10 (2 pcs)	0,14 pc	A	X	X
26	RAA96	Rocker Arm Axle (hardened steel)	3,50 pc	A	X	X
27	RAR96	Bocker Arm Needle Bearing (2pcs)	4,80 pc	A	X	X
28	WD022	Plastic Washer dia. 22 mm (2pcs)	0,56 pc	A	X	X
29	TSE610	Cone-Headed Bolt M6x10 mm (2 pcs)	0,14 pc	A	X	X
30	SSC286	Seatpost Clamp	6,00	X	A	X
		Decals Kit	26,00			

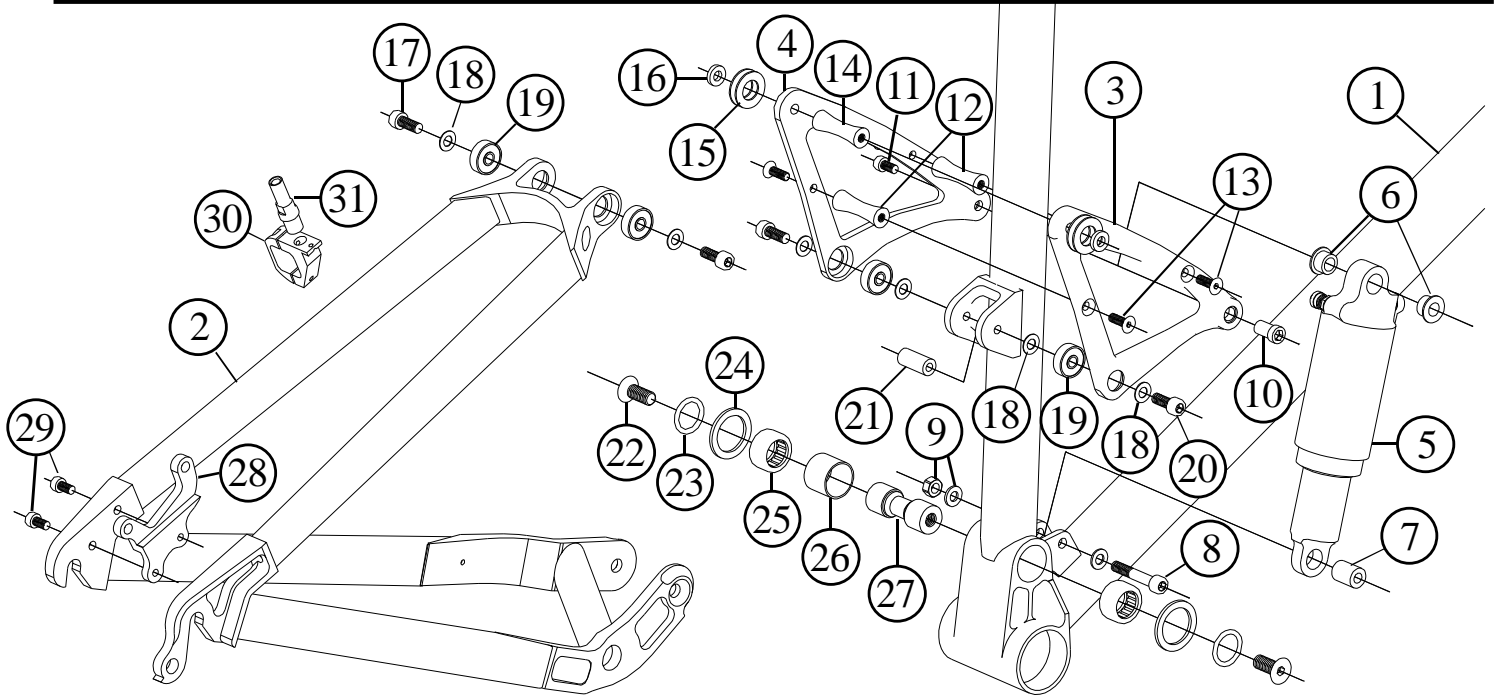
A: Same parts B: Parts are usable, but different in material, appearance, finish, size, etc. X: Non-interchangeable

Specifications are subject to change without notice

FRM

10HP & 10HP Team

2008 Prices for Italian consumers only



Item no.	Code	DESCRIPTION	Price Euro	INTERCHANGEABILITY		
				12 HP	Be Active Plus	Be Mad 2004-2005
1	HPMF03	Main Frame Titan anodised (17,5" –19" – 20,5")	590,00	X	X	X
2	HPS03	One-Piece Suspension	400,00	X	X	X
3	HPRAR04	Rocker Arm Right Plate (Black Anodised)	21,,80	X	X	X
4	HPRAL04	Rocker Arm Left Plate (Black Anodised)	21,80	X	X	X
5	XFO2P165	Rear Shock Rock Shox Monarch Stable Platform (165 mm eye to eye)	265,90	A	A	X
5	HRV200S	Rear Shock DT XR Carbon (165 mm eye to eye)	649,40	A	A	X
6	UES10HP	Spacer of the Shock Upper Eye (2 pcs) Specify shock type	1,50	A	A	X
7	LEAXF	Axle of Shock Lower Eye – Specify shock type	1,00	A	A	A
8	TCE635	Allen Bolt M6 x 35 & Washer	0,27	X	B	B
8	TCE635Ti.	OPTIONAL: Allen Bolt M6 x 35 Titanium	12,60	X	A	A
9	SNM6	Self-Locking nut M6 & Washer	0,09	A	A	A
10	HLP03	Axle of the Shock Upper Eye (Light Alloy)	2,14	A	B	X
11	TCE610	Allen Bolt M6x10	0,14	A	A	X
11	TCE610E	OPTIONAL: Allen Bolt M6x10 Light Alloy	1,70	B	A	X
12	HPRS5	Fuse-Shaped Spacer M5 (2pcs)	3,40 pc	X	X	A
13	TSE515	Cone-Headed Bolt M5x15 (4 pcs)	0,14 pc	X	X	A
14	HPRS6	Fuse-Shaped Spacer M6	3,40	X	X	X
15	WD022	Plastic Washer dia. 22 mm (4 pcs)	0,56 pc	A	A	A
16	BW1245	Brass Washer 12x4,5 mm (2pcs)	0,50 pc	X	X	X
17	TCE625	Allen Bolt M6x25 (2pcs)	0,22 pc	X	X	X
17	TCE625Ti.	OPTIONAL: Allen Bolt M6x25 Light Alloy (2pcs)	2,30 pc	X	X	X
18	SW1215	Steel Washer 12x1,5 mm (6pcs)	0,05 pc	A	X	A
19	BB1966	Ball Bearing 19x6x62RS (4pcs)	2,50 pc	A	X	A
20	TCE620	Allen Bolt M6x20 (2pcs)	0,20 pc	X	X	B
20	TCE620Ti.	OPTIONAL: Allen Bolt M6x20 Light Alloy (2pcs)	2,00 pc	X	X	A
21	HPRAS6	Light Alloy Rod M6	3,00	X	X	X
22	TSE820	Cone-Headed Bolt M8x20 (2 pcs)	0,23 pc	A	B	B
22	TSE820Ti.	OPTIONAL: Cone-Headed Bolt M8x20 Light Alloy (2 pcs)	3,50 pc	B	A	A
23	ORD22	O-Ring dia. 22 mm (2pcs)	0,14 pc	A	A	A
24	WD030	Plastic Washer dia. 30 mm (2pcs)	0,75 pc	A	A	A
25	MPR96	Main Pivot Needle Bearing (2pcs)	6,50 pc	A	A	A
26	MPRS	Bearings Spacer	1,00	A	A	A
27	MPA97	Main Pivot Axle (Light alloy with steel sleeves)	9,70	A	A	A
28	DISC96	Disc Brake Adaptor	18,90	X	A	A
29	TCE512	Allen Bolt M5 x12 mm Steel (2pcs)	0,10 pc	X	A	A
29	TCC512Ti	OPTIONAL Allen Bolt M5 x12 mm Titanium (2pcs)	6,10 pc	X	A	A

Note: Modified from previous Spare Part Manual

A: Same parts B: Parts are usable, but different in material, appearance, finish, size, etc. X: Non-interchangeable

FRM

Manufactured and distributed by:

The Bike Shop

Via Mattei 18/a

48025 Riolo Terme (RA)

Italy

tel. +39 0546 70310

fax +39 0546 74623

e-mail: info@frmbike.com

www.frmbike.com