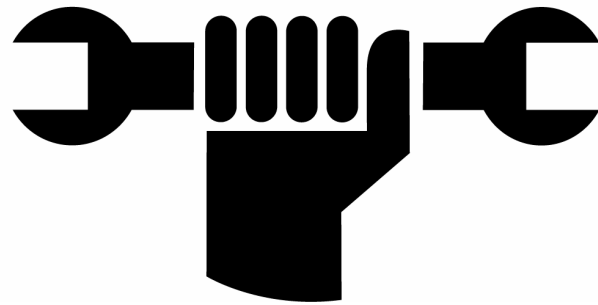


***FRM***



2007

SPARE PART

MANUAL

&

PRICE LIST

# INDEX

## CRANKSETS

CU2-R 110 Integral Drive (Road) Modif  
CU2-M TR Integral Drive (MTB) Modif  
CU2-M 2x9 Integral Drive ( MTB) Modif

## FRONT HUBS

FL-R Team CA (Road)  
SP-R Team (Road)  
FL-M Team (MTB)  
FL-M Team Disc (MTB)  
**FL-M Team Lefty Disc (MTB) New**  
FL-R Pro (Road)& FL-M Pro (MTB)  
FL-M Pro Disc (MTB)

## REAR HUBS

FL-R Team CA (Road)  
SP-R Team (Road)  
FL-M Team (MTB) Modif.  
FL-M Team Disc (MTB) Modif.  
FL-R Pro (Road)  
FL-M Pro (MTB) Modif  
FL-M Pro Disc (MTB) Modif

## DISC ROTORS

UNIROTOR Pro 160  
**UNIROTOR Pro 180 New**  
UNIROTOR Team 160

## QUICK RELEASE

TEAM

## HEADSET

C-SET  
C-SET Team 1 1/8"

## STEMS

WEB-STEM CF & CF Ti.  
**WEB-STEM 32 & 32 Ti. New**  
**LEFTY WEB-STEM CF & CF Ti.**  
**BLACK HOLE**

## BRAKE LEVERS

DP4 (MTB)  
DP4 SL (MTB)

## MTB BRAKES

DP4  
DP4 Ti.

## ROAD BRAKES

Page 3 CL2  
Page 4 CL2 Ti.  
Page 5 **CL2 Team New** Page 27

## SEATPOSTS

Page 6 ST-R11  
Page 7 ST-R21 Carbon  
Page 8 ST-R21 Carbon Ti.  
Page 9 ST-M11  
Page 10 ST-M21 Carbon  
Page 11 ST-M21 Carbon Ti. Page 28  
Page 12

ST-M10  
ST-M10 Ti.  
Page 13 ST-M20 Carbon  
Page 14 ST-M20 Carbon Ti. Page 29  
Page 15

## SUSPENSION FORKS

Page 16  
Page 17 **AIR-WAY 85 SSV Carbon New**  
Page 18 **AIR-WAY 85 SSV BiCarbon New**  
Page 19 **AIR-WAY 85 SSV BiCarbon Ti. New** Page 30

**AIR-WAY 110 SSV Carbon New**  
**AIR-WAY 110 SSV BiCarbon New**  
**AIR-WAY 110 SSV BiCarbon Ti. New** Page 31

## SUSPENSION FRAMES

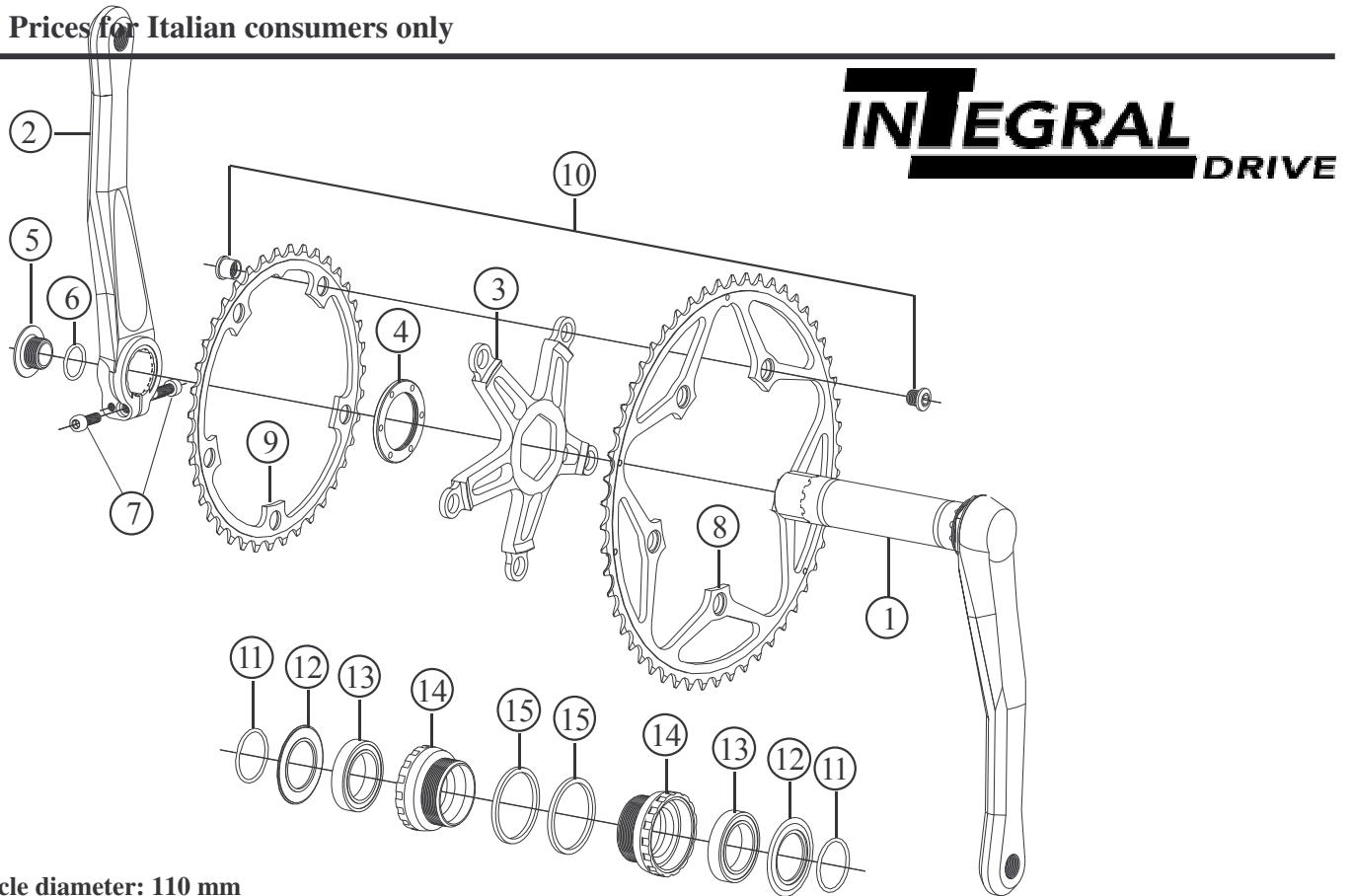
12HP Modif Page 32  
Page 21 10HP Page 33

# FRM

Front Crankset for Road

## CU2-R110 & R110 Ti. INTEGRAL DRIVE

2007 Prices for Italian consumers only



Bolt circle diameter: 110 mm

Item no.	Code	DESCRIPTION	Price Euro	INTERCHANGEABILITY			
				CU2-R 130 ISIS	CU2-R 110 ISIS	CU2-M TR Integral	CU2-R 130 Integral
1	CU16R	Integral Right Arm with Axle (L.116,5 mm) 170-172,5-175 mm - Black	155,00	X	X	X	A
2	CU16L	Clamp Type Left Arm 170-172,5-175 mm - Black	105,00	X	X	X	A
3	CU27R	5 Arm spider (110 mm B.D.C.) Black or Gold Works	80,00	X	X	B	B
4	CU006	Spider Lock Ring	4,80	A	A	A	A
5	CU18	Bolt for Play Adjustment	2,50	X	X	A	A
6	OR2056	O-Ring 2056 ( I.D. 14 x 1,78 mm)	-	X	X	A	A
7	TCC515/512S	1 Allen Bolt M5x15 and 1 Allen bolt M5x12 / Steel	0,20	X	X	A	A
7	TCC515Ti TCC512Ti	1 Allen Bolt M5x15 and 1 Allen bolt M5x12 / Titanium	6,10 6,10	X	X	A	A
8	CU1753110	Chain Ring FRM Pro 50T (110 mm B.C.D.)	53,90	X	A	X	X
	CU21739110	Chain Ring FRM Pro 39T (110 mm B.C.D.)	24,90	X	A	X	X
8	CU17500	Chain Ring FRM Pro 50T (110 mm B.C.D.)	53,90	X	A	X	X
9	CU1736I	Chain Ring FRM Pro 36T (110 mm B.C.D.)	24,90	X	A	X	X
9	CU1734I	Chain Ring FRM Pro 34T (110 mm B.C.D.)	24,90	X	A	X	X
10	CU004	Chainring Fixing Bolt & Nut Black (each)	2,40	A	A	A	A
10	CU004G	Chainring Fixing Bolt & Nut Gold (each)	2,60	A	A	A	A
11	OR2093	O-Ring 2093 (I.D. 23,52 x 1,78 mm)	-	X	X	A	A
12	CU19	Dust Shield (plastic)	2,00	X	X	A	A
13	BB37257	Bearing 6805 2RS 37x25x7 mm	11,00	X	X	A	A
14	CU20R CU20L	Right hand Cup (BC 1,37x24T) English Thread / Shell Width 68 mm Left hand Cup (BC 1,37x24T) English Thread / Shell Width 68 mm	13,70	X X	X X	A A	A A
14	CU21	Right & Left hand Cup (M36x24T) Italian Thread / Shell Width 70 mm	13,70	X	X	A	A
15	CU22	Spacer 2,5 mm thick. DO NOT USE WITH ITALIAN 70mm BB SHELLS	1,00	X	X	A	A

A: Same parts

B: Parts are usable, but different in material, appearance, finish, size.

X: Non-interchangeable

Specifications are subject to change without notice

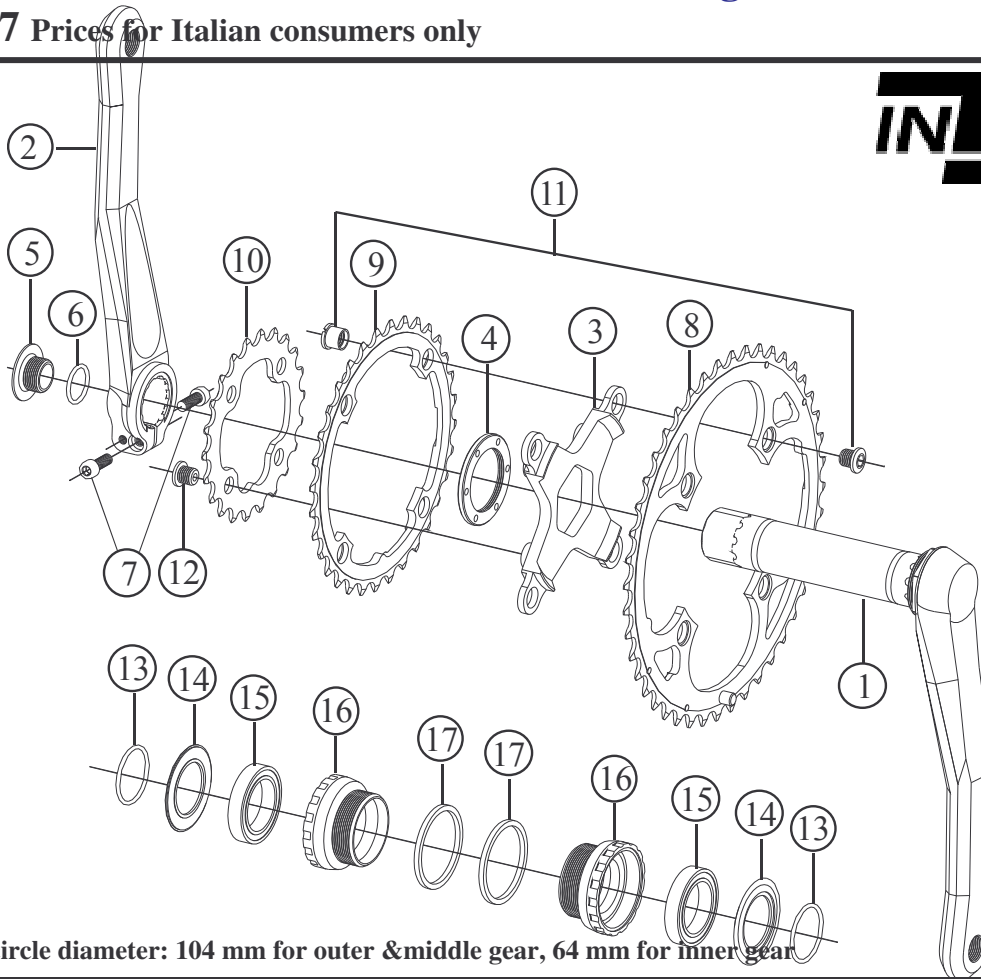
# FRM

Front Crankset for MTB

## CU2-M TR & M TR Ti. Integral Drive - Modified

2007 Prices for Italian consumers only

# INTEGRAL DRIVE



Bolt circle diameter: 104 mm for outer & middle gear, 64 mm for inner gear

Item no.	Code	DESCRIPTION	Price Euro	INTERCHANGEABILITY			
				CU2-M 2X9 Integral	CU2-OS 3X Integral	CU2-M TR ISIS	CU2-M 2x9 ISIS
1	CU23R	Integral Right Arm with Axle 170-172,5-175 mm - Black	155,00	A	X	X	X
2	CU24L	Clamp Type Left Arm 170-172,5-175 mm - Black	105,00	A	X	X	X
3	CU25M	4 Arm Spider for triple rings (110/64 mm B.C.D.) Black or Gold	71,00	B	B	X	X
4	CU006	Spider Lock Ring	4,80	A	A	A	A
5	CU18	Bolt for Play Adjustment	2,50	A	A	X	X
6	OR2056	O-Ring 2056 (I.D. 14 x 1,78 mm)	-	A	A	X	X
7	TCC515/512S	1 Allen Bolt M5x15 and 1 Allen bolt M5x12 / Steel	0,10	A	A	X	X
7	TCC515Ti TCC512Ti	1 Allen Bolt M5x15 and 1 Allen bolt M5x12 / Titanium	6,10 6,10	X	X	A	A
8	CU18440	Chain Ring FRM Pro 44T (104 mm B.C.D.)	52,90	X	A	A	X
8	CU18420	Chain Ring FRM Pro 42T (104 mm B.C.D.)	52,90	X	A	A	X
9	CU1832M	Chain Ring FRM Pro 32T (104 mm B.C.D.)	30,60	X	A	A	X
10	CU2122I	Chain Ring FRM Pro 22T (64 mm B.C.D.)	15,70	X	A	A	X
11	CU004	Chainring Fixing Bolt & Nut (each)	2,40	A	A	A	A
10	CU004G	Chainring Fixing Bolt & Nut Gold (each)	2,60	A	A	A	A
12	CU005	Inner Gear Fixing Bolt Unit (4 pcs)	1,5	X	A	A	X
13	OR2093	O-Ring 2093 (I.D. 23,52 x 1,78 mm)	-	A	A	X	X
14	CU19	Dust Shield (plastic)	2,00	A	A	X	X
15	BB37257RS	Bearing 6805 2RS 37x25x7 mm (Red Seal for heavy duty)	16,50	A	A	X	X
16	CU20R CU20L	Right hand Cup (BC 1,37x24T) English Thread / Shell Width 68 mm Left hand Cup (BC 1,37x24T) English Thread / Shell Width 68 mm	13,70	A A	A A	X X	X X
17	CU22	Spacer 2,5 mm thick. DO NOT USE WITH 73 mm BB SHELLS	1,00	A	A	X	X

Note: Modified parts from model 2006

A: Same parts

B: Parts are usable, but different in material, appearance, finish, size.

X: Non-interchangeable

Specifications are subject to change without notice

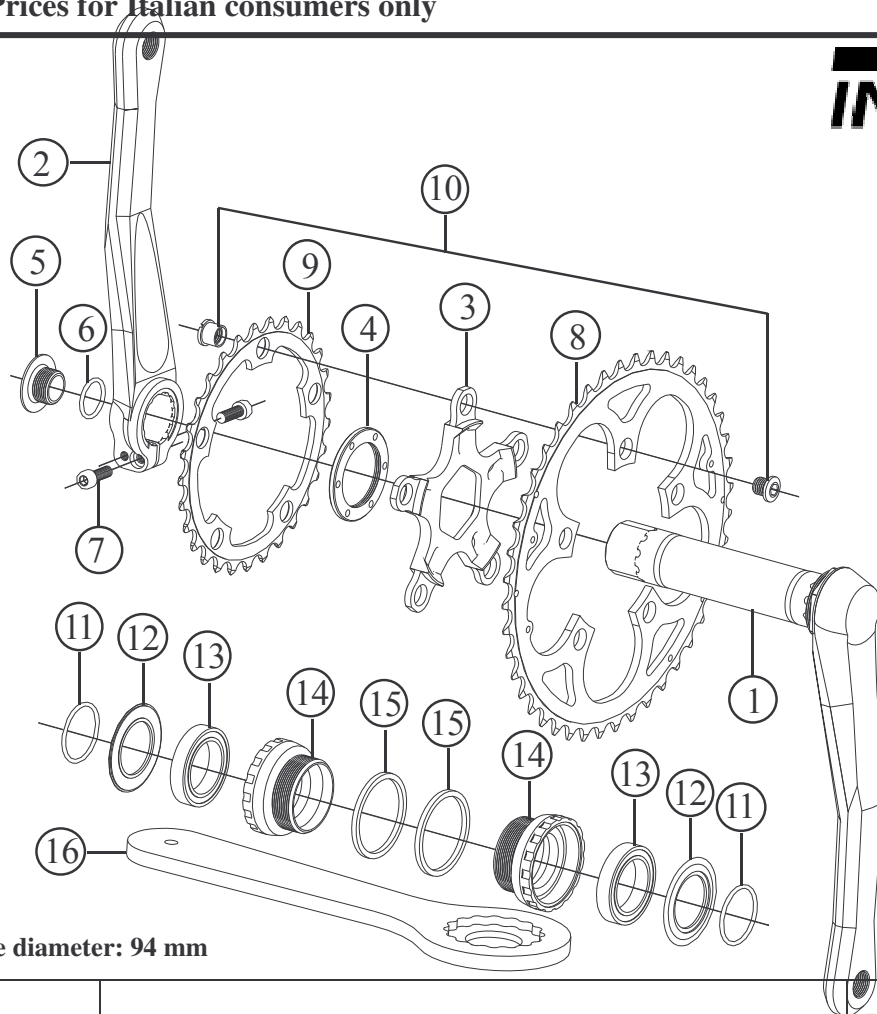
# FRM

Front Crankset for MTB

## CU2-M 2x9 & M2x9 Ti. Integral Drive - Modified

2007 Prices for Italian consumers only

# INTEGRAL DRIVE



Bolt circle diameter: 94 mm

Item no.	Code	DESCRIPTION	Price Euro	INTERCHANGEABILITY			
				CU2-M TR Integral	CU2-OS 3X Integral	CU2-M TR ISIS	CU2-M 2x9 ISIS
1	CU23R	Integral Right Arm with Axle 170-172,5-175 mm – Black	155,00	A	X	X	X
2	CU24L	Clamp Type Left Arm 170-172,5-175 mm - Black	105,00	A	X	X	X
3	CU28M	5 Arm Spider (94 mm B.C.D.) Black or Gold	71,00	B	B	X	X
4	CU006	Spider Lock Ring	4,80	A	A	A	A
5	CU18	Bolt for Play Adjustment	2,50	A	A	X	X
6	OR2056	O-Ring 2056 ( I.D. 14 x 1,78 mm)	-	A	A	X	X
7	TCC515/510S	1 Allen Bolt M5x15 and 1 Allen bolt M5x10 / Steel	0,10	A	A	X	X
7	TCC515Ti TCC512Ti	1 Allen Bolt M5x15 and 1 Allen bolt M5x12 / Titanium	6,10 6,10	X	X	A	A
8	CU19440	Chain Ring FRM Pro 44T (94 mm B.C.D.)	52,90	X	X	X	A
8	CU19420	Chain Ring FRM Pro 42T (94 mm B.C.D.)	52,90	X	X	X	A
9	CU1929I	Chain Ring FRM Pro 29T (94 mm B.C.D.)	26,90	X	X	X	A
10	CU004	Chainring Fixing Bolt & Nut (4 sets)	2,40	A	A	A	A
10	CU004G	Chainring Fixing Bolt & Nut Gold (each)	2,60	A	A	A	A
11	OR2093	O-Ring 2093 (I.D. 23,52 x 1,78 mm)	-	A	A	X	X
12	CU19	Dust Shield (plastic)	2,00	A	A	X	X
13	BB37257RS	Bearing 6805 2RS 37x25x7 mm (Red Seal for heavy duty)	16,50	A	A	X	X
14	CU20R CU20L	Right hand Cup (BC 1,37x24T) English Thread / Shell Width 68 mm Left hand Cup (BC 1,37x24T) English Thread / Shell Width 68 mm	13,70	A A	A A	X X	X X
15	CU22	Spacer 2,5 mm thick. DO NOT USE WITH 73 mm BB SHELLS	1,00	A	A	X	X
16	CU26	Tool for Bottom Bracket Cups	18,00	A	A	X	X

Note: Modified parts from model 2006

A: Same parts

B: Parts are usable, but different in material, appearance, finish, size.

X: Non-interchangeable

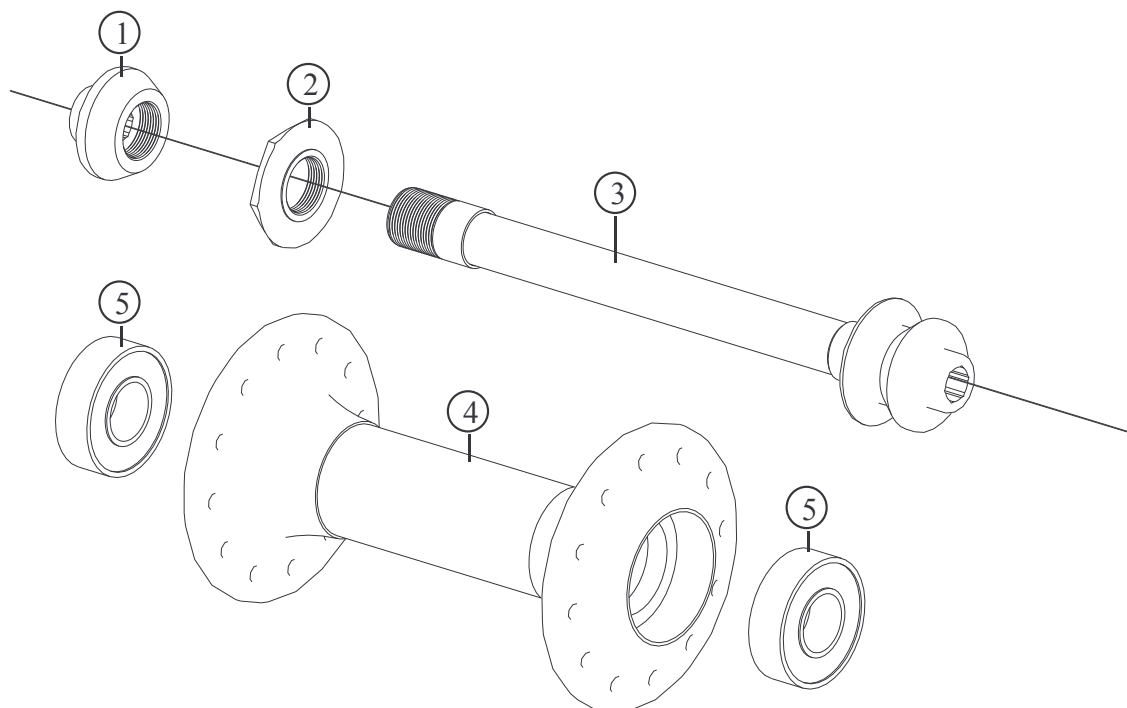
Specifications are subject to change without notice

# FRM

Front Hub for Road Only

## FL-R TEAM CA

2007 Prices for Italian consumers only



ALSO SUPPLIED ON WHEELSET: FL-R 21 Aerolite FL-R23 Aerolite Carbon and FL-R24 Aerolite Carbon Zipp

Item no.	Code	DESCRIPTION	Price Euro	INTERCHANGEABILITY					
				FL Comp	FL Pro	LF-M Team/ Team Disc	FL-M Pro/ Comp Disc	SP CompPro	FL or SP-R Feather
1	FH003CA	Lock Nut for carbon fibre axle / Light alloy – Team CA	3,50	X	X	X	X	X	X
2	FH02CCA	Inner Nut for carbon fibre axle (Light alloy – Team CA	3,00	X	X	X	X	X	X
3	FH04CCA	Carbon Fibre Axle with bonded light alloy ends – Team CA	21,50	X	X	X	X	X	X
4	FH06B20G	Hub Body 20 h: Alloy Flanges (Gold)+Carbon Fibre Centre	70,00	X	X	X	X	X	X
4	FH07B24G	Hub Body 24 h: Alloy Flanges (Gold)+Carbon Fibre Centre	70,00	X	X	X	X	X	X
4	FH07B28G	Hub Body 28 h: Alloy Flanges (Gold)+Carbon Fibre Centre	70,00	X	X	X	X	X	X
4	FH07B32G	Hub Body 32 h: Alloy Flanges (Gold)+Carbon Fibre Centre	70,00	X	X	X	X	X	X
4	FH06B20S	Hub Body 20 h: Alloy Flanges (Silver)+Carbon Fibre Cent.	70,00	X	X	X	X	X	X
4	FH07B24S	Hub Body 24 h: Alloy Flanges (Silver)+Carbon Fibre Cent.	70,00	X	X	X	X	X	X
4	FH07B28S	Hub Body 28 h: Alloy Flanges (Silver)+Carbon Fibre Cent.	70,00	X	X	X	X	X	X
4	FH07B32S	Hub Body 32 h: Alloy Flanges (Silver)+Carbon Fibre Cent.	70,00	X	X	X	X	X	X
5	HB2097	Bearing 699 20x9x6 mm 2RS	10,00	X	X	X	X	X	A

A: Same parts

B: Parts are usable, but different in material, appearance, finish, size.

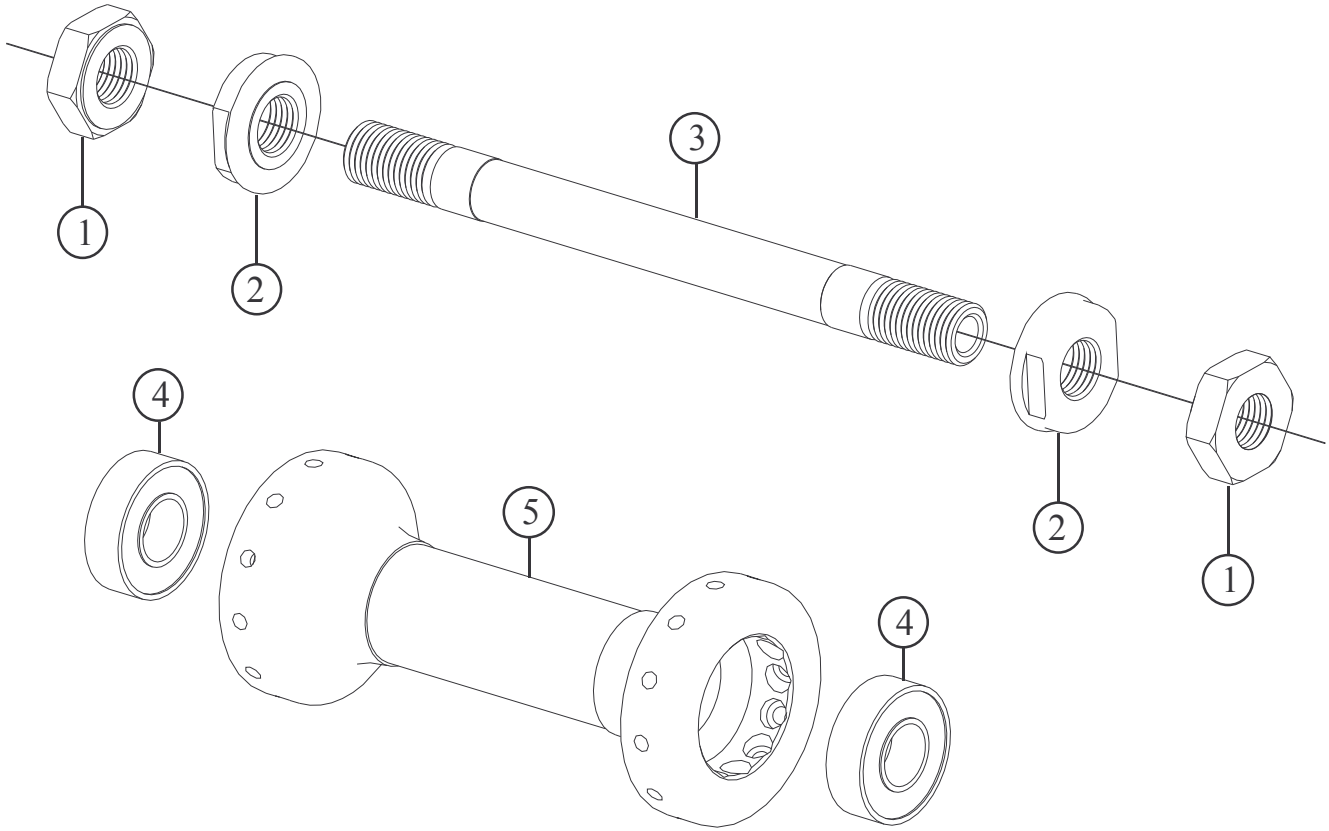
X: Non-interchangeable

Specifications are subject to change without notice

# FRM

Front Hub for Road Only  
**SP-R TEAM**

**2007 Prices for Italian consumers only**



**SUPPLIED ONLY AS WHEELSET SP-R21**

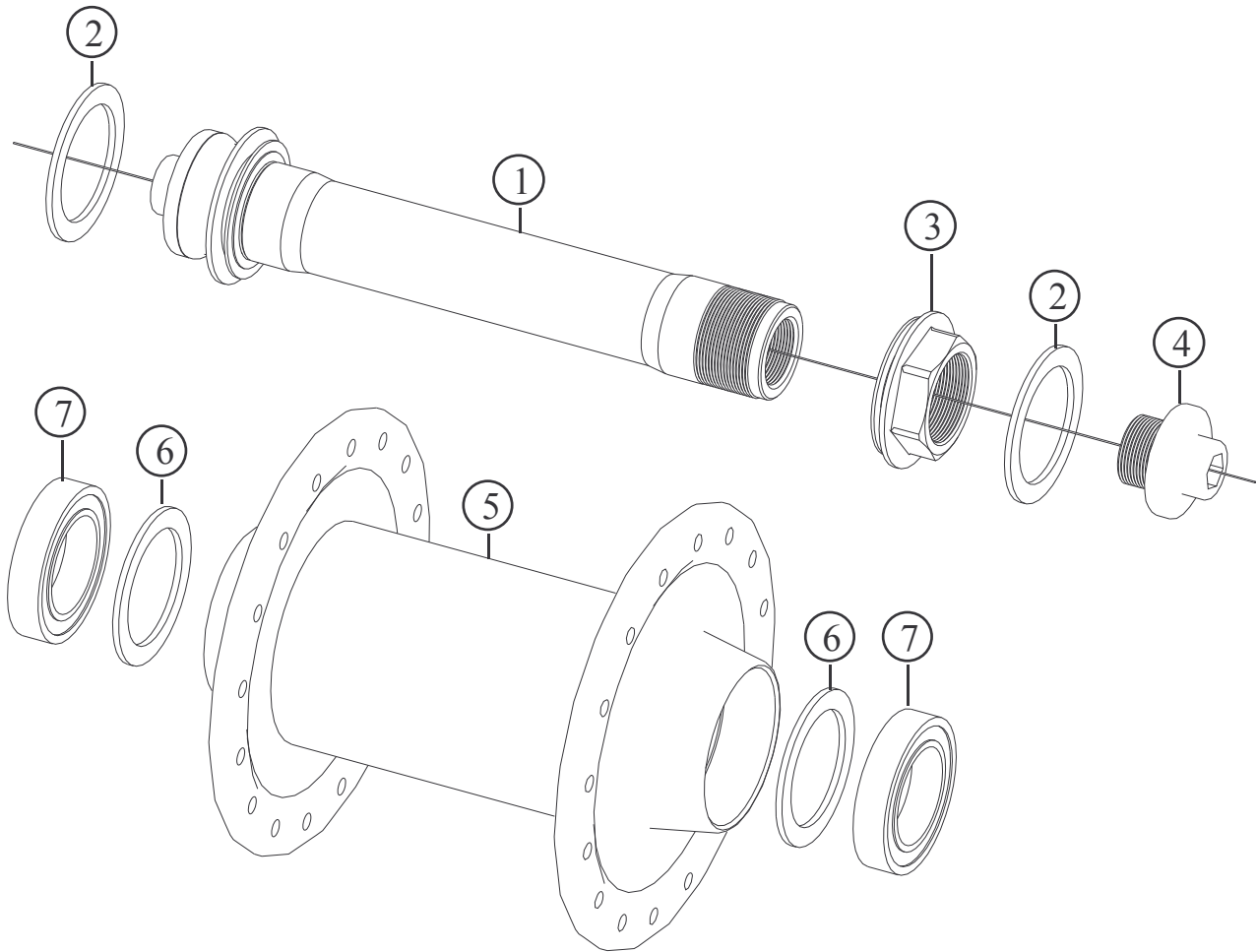
Item no.	Code	DESCRIPTION	Price Euro	INTERCHANGEABILITY						
				FL Comp	FL Pro	FL-R Feather	FL-M Comp Disc	FL-M Pro Disc	SP Comp	SP Pro
1	FH01C	Lock Nut: M9 x 17 mm / Thickness 5,5 mm / Light Alloy	1,90	B	X	A	B	X	B	X
2	FH02C	Inner Nut: M9 x 16 mm / Dia. 20 mm / Light Alloy	3,00	X	X	A	X	X	X	X
3	FH04C	Hub Axle 109 mm / Dia. 9mm / Light alloy	16,50	B	X	A	B	X	B	X
4	HB2097	Bearing 20x9x7 mm 2RS	10,00	X	X	A	X	X	X	X
5	FH07E24G	Hub Body 24 h: Gold anodised Flanges. Carbon F. Centre	65,00	X	X	X	X	X	X	X
5	FH07E24S	Hub Body 24 h: Silver anodised Flanges. Carbon F. Centre	65,00	X	X	X	X	X	X	X

A: Same parts  
B: Parts are usable, but different in material, appearance, finish, size.  
X: Non-interchangeable

Specifications are subject to change without notice

**FRM**  
Front Hub for MTB  
**FL-M TEAM**

**2007 Prices for Italian consumers only**



**ALSO SUPPLIED ON WHEELSETS: FL-M21 ZTR**

Item no.	Code	DESCRIPTION	Price Euro	INTERCHANGEABILITY					
				FL Comp Pro	FL-Pro 2006	SP-R FL-R Feather	FL-M Pro Disc	SP Comp Pro	FL-M Team Disc
1	FH0315	Hub Axle Dia 15 mm with bonded end cap/ Light Alloy	33,25	X	A	X	A	X	A
2	3FH02DS	Rubber Seal: 24x17x1	0,25	X	A	X	A	X	A
3	FH0215	Inner Nut: M15x17 with rubber shield / L. alloy	3,25	X	A	X	A	X	A
4	FH0115	Axle Cap End: M10,5 Long 13,5 / Light Alloy	2,00	X	A	X	A	X	A
5	FLMTVF32	Hub Body Carbon fibre/Alloy. Gold anodised. 32H	62,00	X	B	X	X	X	X
5	FLMTVF28	Hub Body Carbon fibre/Alloy. Gold anodised. 28H	62,00	X	B	X	X	X	X
6	BS24181	Bearing Spacer 23,8x18x1,0 mm / Light Alloy	0,60	X	X	X	X	X	A
7	HB24155	Bearing 24x15x5 mm 6802 2RS	9,50	X	A	X	A	X	A

**A: Same parts**

**B: Parts are usable, but different in material, appearance, finish, size.**

**X: Non-interchangeable**

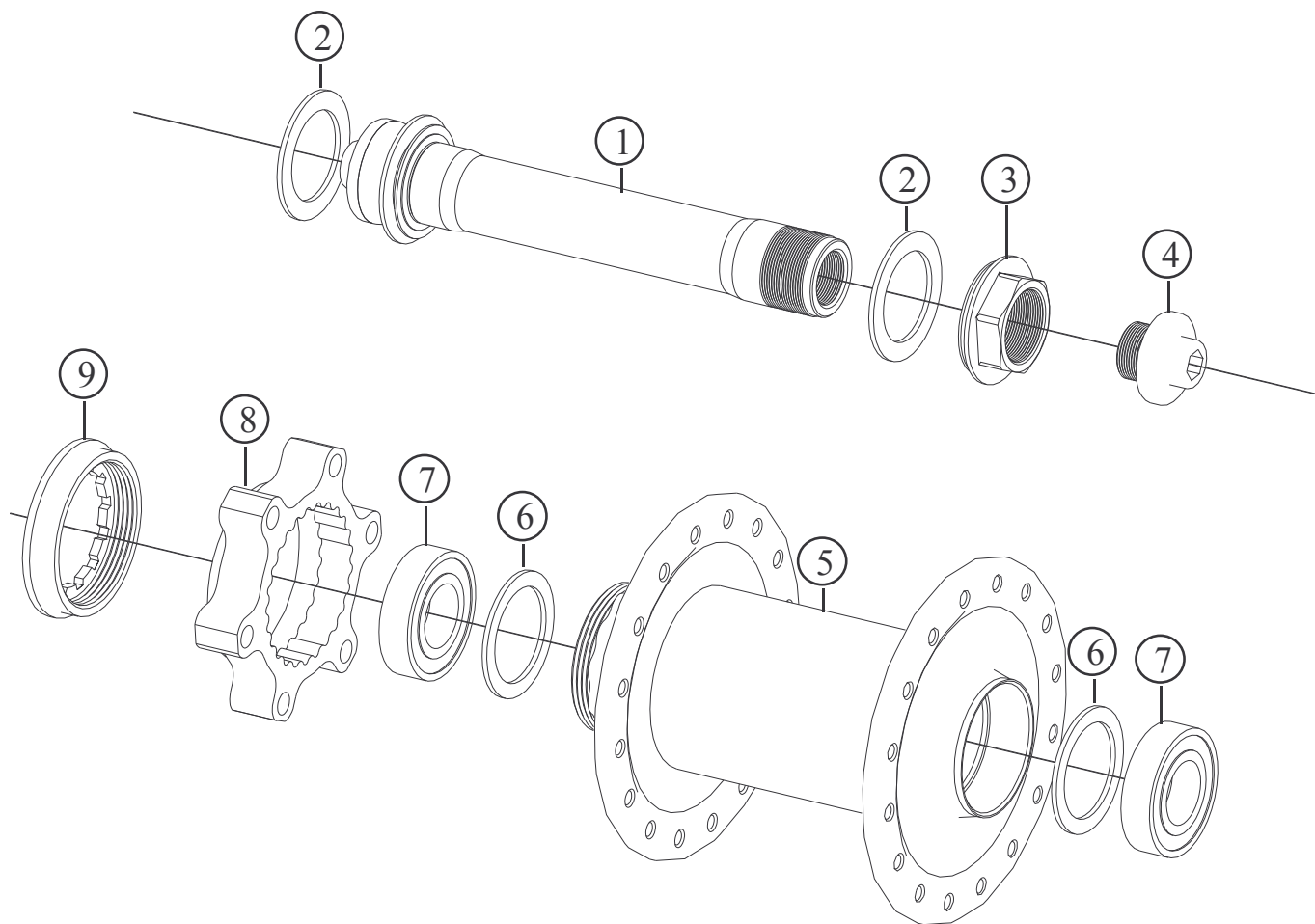
Specifications are subject to change without notice

# FRM

## Front Hub for MTB

### FL-M TEAM DISC

**2007 Prices for Italian consumers only**



**ALSO SUPPLIED ON WHEELSETS: FL-M21 Olympic Disc**

Item no.	Code	DESCRIPTION	Price Euro	INTERCHANGEABILITY					
				FL Comp Pro	FL-Pro 2006	SP-R FL-R Feather	FL-M Pro Disc	SP Comp Pro	FL-M Team
1	FH0315	Hub Axle Dia 15 mm with bonded end cap/ Light Alloy	33,25	X	A	X	A	X	A
2	3FH02DS	Rubber Seal: 24x17x1	0,25	X	A	X	A	X	A
3	FH0215	Inner Nut: M15x17 with rubber shield / L. alloy	3,25	X	A	X	A	X	A
4	FH0115	Axle Cap End: M10,5 Long 13,5 / Light Alloy	2,00	X	A	X	A	X	A
5	FLMTDF32	Hub Body Carbon fibre/Alloy. Gold anodised. 32H	62,00	X	B	X	X	X	X
5	FLMTDF28	Hub Body Carbon fibre/Alloy. Gold anodised. 28H	62,00	X	B	X	X	X	X
6	BS24181	Bearing Spacer 23,8x18x1,0 mm / Light Alloy	0,60	X	X	X	X	X	A
7	HB24155	Bearing 24x15x5 mm 6802 2RS	9,50	X	A	X	A	X	A
8	DH-DF2	Disc Flange without ribs: 6 holes International Std.	25,00	X	X	X	A	X	X
9	DH-LR1	Lock Ring for Disc Flange	9,00	X	X	X	A	X	X

**A:** Same parts

**B:** Parts are usable, but different in material, appearance, finish, size.

**X:** Non-interchangeable

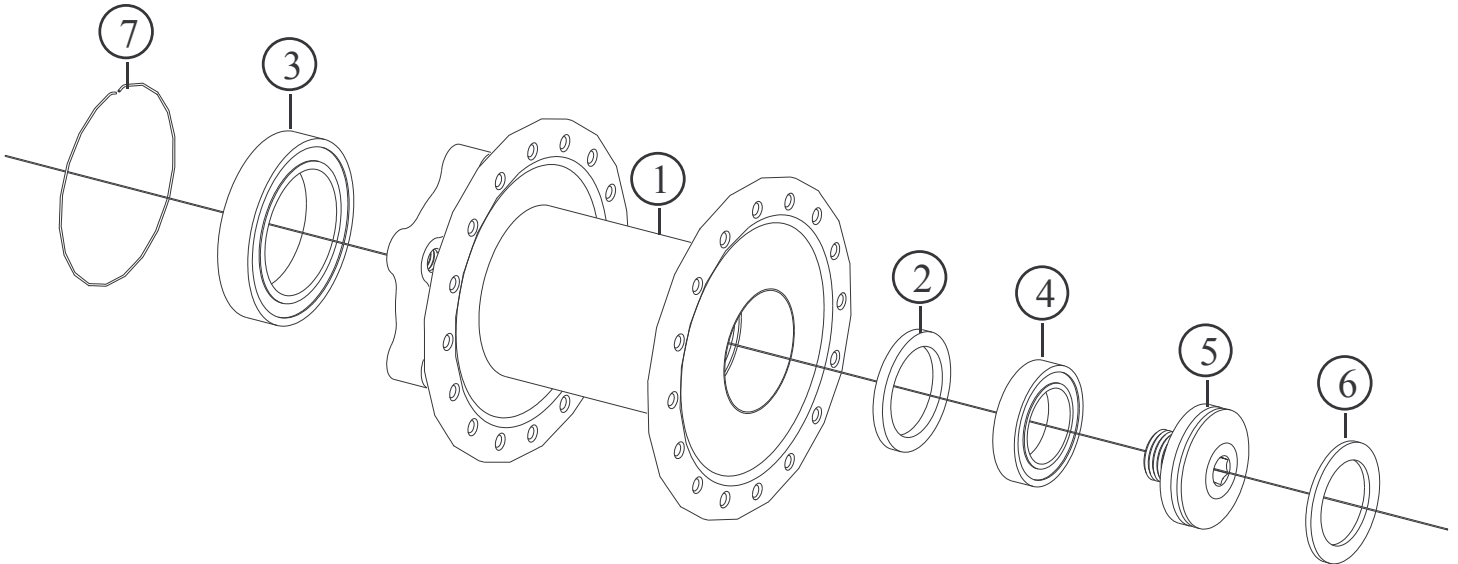
Specifications are subject to change without notice

# FRM

Front Hub for MTB

## FL-M TEAM LEFTY DISC - NEW

2007 Prices for Italian consumers only



ALSO SUPPLIED ON WHEELSETS: FL-M21 Olympic Lefty Disc or FL-M21 Tubular Lefty Disc

Item no.	Code	DESCRIPTION	Price Euro	INTERCHANGEABILITY					
				FL Comp Pro	FL-Pro 2006	SP-R FL-R Feather	FL-M Pro Disc	SP Comp Pro	FL-M Team
1	FLMTLDF32	Hub Body Carbon fibre/Alloy. Gold anodised. 32H	75,00	X	B	X	X	X	X
1	FLMTLDF24	Hub Body Carbon fibre/Alloy. Gold anodised. 24H	75,00	X	B	X	X	X	X
2	FH05A2	Bearing Spacer 23,8x18x2,2 mm / Light Alloy	0,60	X	X	X	X	X	A
3	BB37257RS	Bearing 6805 2RS 37x25x7 mm (Red Seal. Heavy duty)	16,50	X	X	X	X	X	X
4	HB24155	Bearing 24x15x5 mm 6802 2RS	9,50	X	A	X	A	X	A
5	FH116L	Lock-nut bolt in light alloy. Thread 10x1 mm	2,50	X	X	X	X	X	X
6	3FH02DS	Rubber Seal: 24x17x1	0,25	X	A	X	A	X	A
7	FH117L	Bearing Retainer spring	1,00	X	X	X	X	X	X

A: Same parts

B: Parts are usable, but different in material, appearance, finish, size.

X: Non-interchangeable

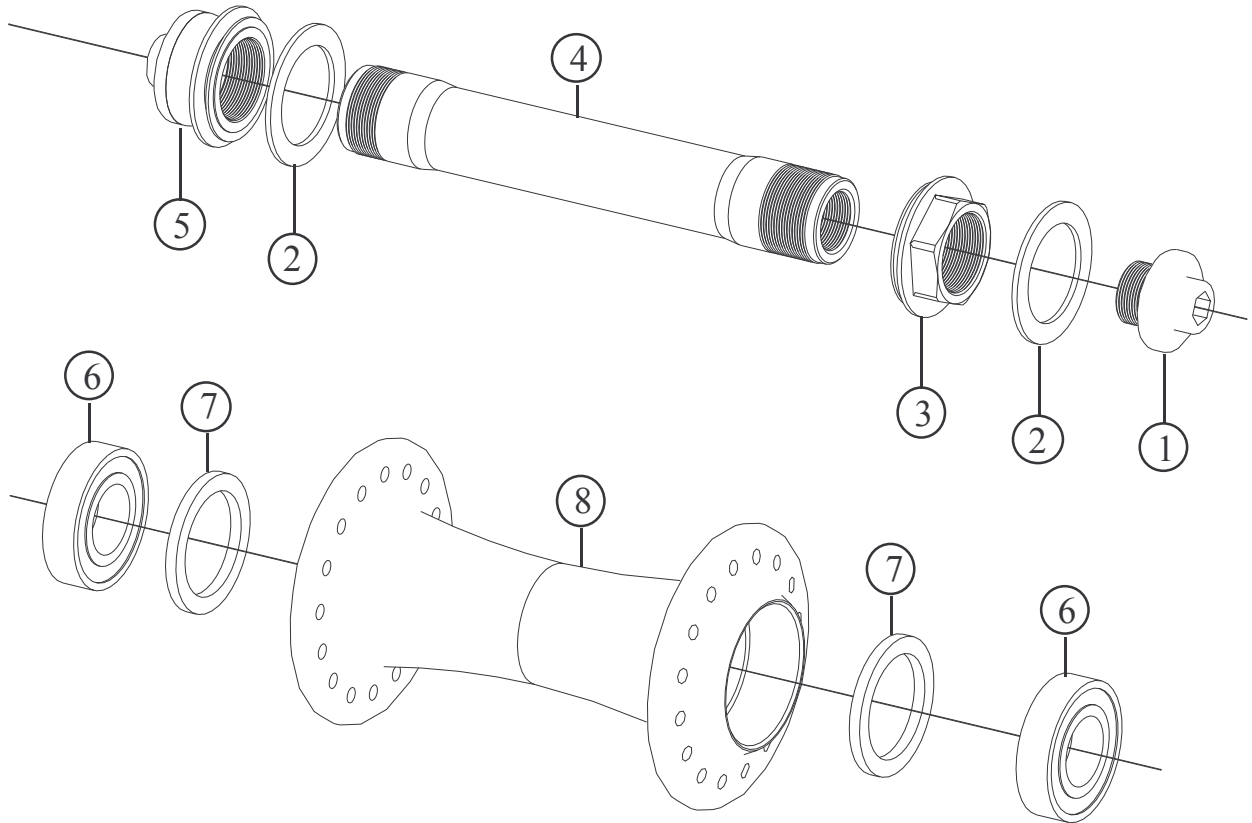
Specifications are subject to change without notice

# FRM

## Front Hub for Road & MTB

### FL-R PRO & FL-M PRO

**2007 Prices for Italian consumers only**



**ALSO SUPPLIED ON WHEELSET: FL-R12, FL-M12 and FL-M12 ZTR**

Item no.	Code	DESCRIPTION	Price Euro	INTERCHANGEABILITY					
				FL-M Team	FL-M Team Disc	FL-M Pro/Comp Disc	FL-M15 Pro Disc	SP Pro/Comp	FL-R or SP-R Feather
1	FH0115	Axle Cap End: M10,5 Long 13,5 / Light Alloy	2,00	A	A	X	A	X	X
2	3FH02DS	Rubber Seal: 24x17x1	0,25	A	A	A	A	X	X
3	FH0215	Inner Nut: M15x17 with rubber shield / L. alloy	3,25	A	A	X	A	X	X
4	FH0315	Hub Axle 92,5 mm / Dia 15 mm / Light Alloy	31,00	A	A	X	A	X	X
5	FH 0415	Axle Cap End: M15 with rubber shield / L. alloy	3,25	A	A	X	A	X	X
6	HB24155	Bearing 24x15x5 mm 6802 2RS	9,50	A	A	X	A	X	X
7	FH05A1	Bearing Spacer 23,8x18x1,6 mm / Light Alloy	0,60	X	X	X	A	X	X
8	FH07F24	Hub Body 24 holes / Light Alloy, Black	45,00	X	X	X	X	X	X
8	FH07F28	Hub Body 28 holes / Light Alloy - Black	45,00	X	X	X	X	X	X
8	FH07F32	Hub Body 32 holes / Light Alloy - Black	45,00	X	X	X	X	X	X

**A: Same parts**

**B: Parts are usable, but different in material, appearance, finish, size.**

**X: Non-interchangeable**

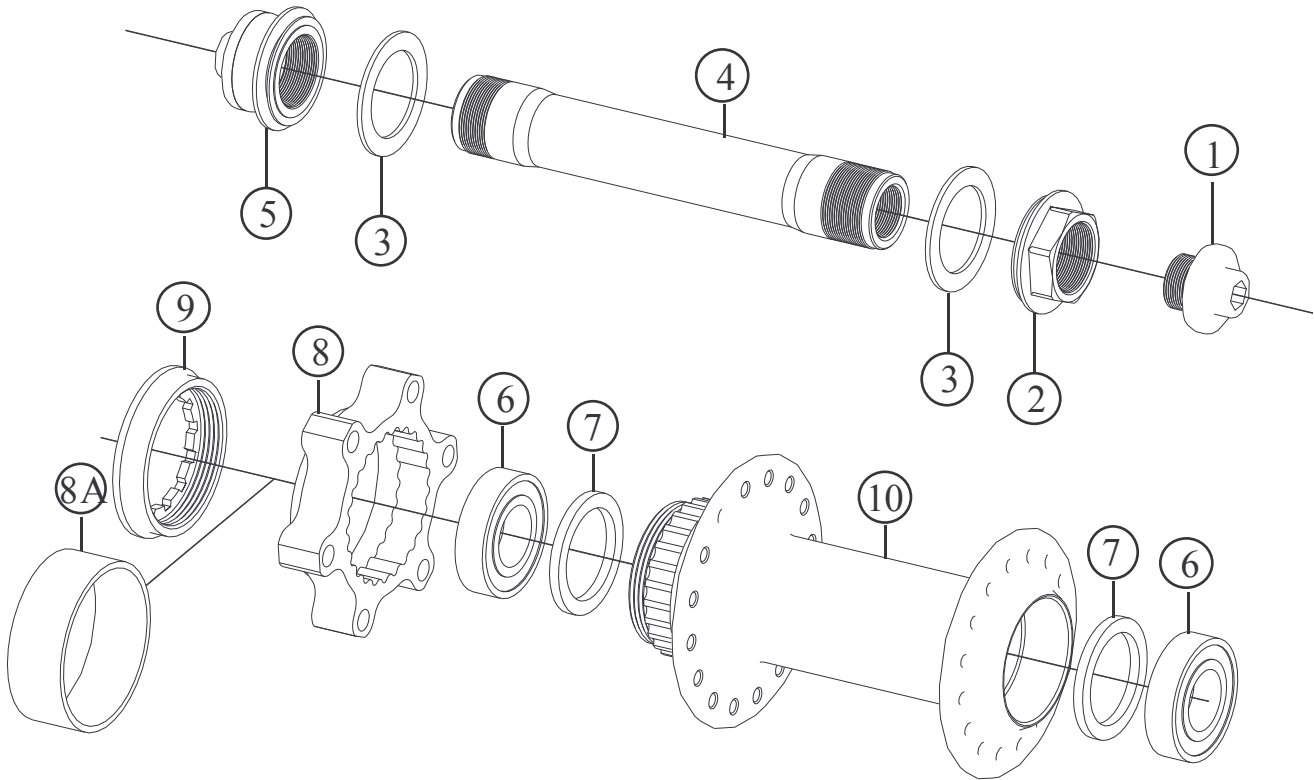
Specifications are subject to change without notice

# FRM

## Front Hub for MTB

### FL-M PRO DISC

**2007 Prices for Italian consumers only**



**ALSO SUPPLIED ON WHEELSETS: FL-M12 Disc and FL-M12 Olympic Disc**

Item no.	Code	DESCRIPTION	Price Euro	INTERCHANGEABILITY							
				FL&SP Comp Pro	FL-R Feather	SP-R Feather	FL-M Pro 15	FL-M Comp Disc	FL-M Pro 15	FL-M Team	FL-M Team Disc
1	FH0115	Axle Cap End: M10,5 Long 13,5 / Light Alloy	1,90	X	X	X	A	X	A	A	A
2	FH0215	Inner Nut: M15x17 with rubber seal / Light alloy	3,25	X	X	X	A	X	A	A	A
3	3FH02DS	Rubber Seal: 24x17x1	0,25	X	A	X	A	A	A	A	A
4	FH0315	Hub Axle 92,5 mm / Dia 15 mm / Light Alloy	31,00	X	X	X	A	X	A	A	A
5	FH 0415	Axle Cap End: M15 with rubber seal / Light alloy	3,25	X	X	X	A	X	A	A	A
6	HB24155	Bearing 24x15x5 mm 6802 2RS	9,50	X	X	X	A	X	A	A	A
7	FH05A2	Bearing Spacer 23,8x18x2,2 mm / Light Alloy	0,60	X	X	X	A	X	A	X	X
8	DH-DF2	Disc Flange without ribs: 6 holes International Std.	25,00	X	X	X	X	B	X	X	A
8A	DH-VB1	Plastic spacer for V-Brake use (Optional)	4,15	X	X	X	X	A	X	X	A
9	DH-LR1	Lock Ring for Disc Flange	8,30	X	X	X	X	A	X	X	A
10	FH07C28	Hub Body 28 holes / Light Alloy - Black	47,00	X	X	X	X	A	X	X	X
10	FH07C32	Hub Body 32 holes / Light Alloy - Black	47,00	X		X	X	X	A	X	X

**A: Same parts**

**B: Parts are usable, but different in material, appearance, finish, size.**

**X: Non-interchangeable**

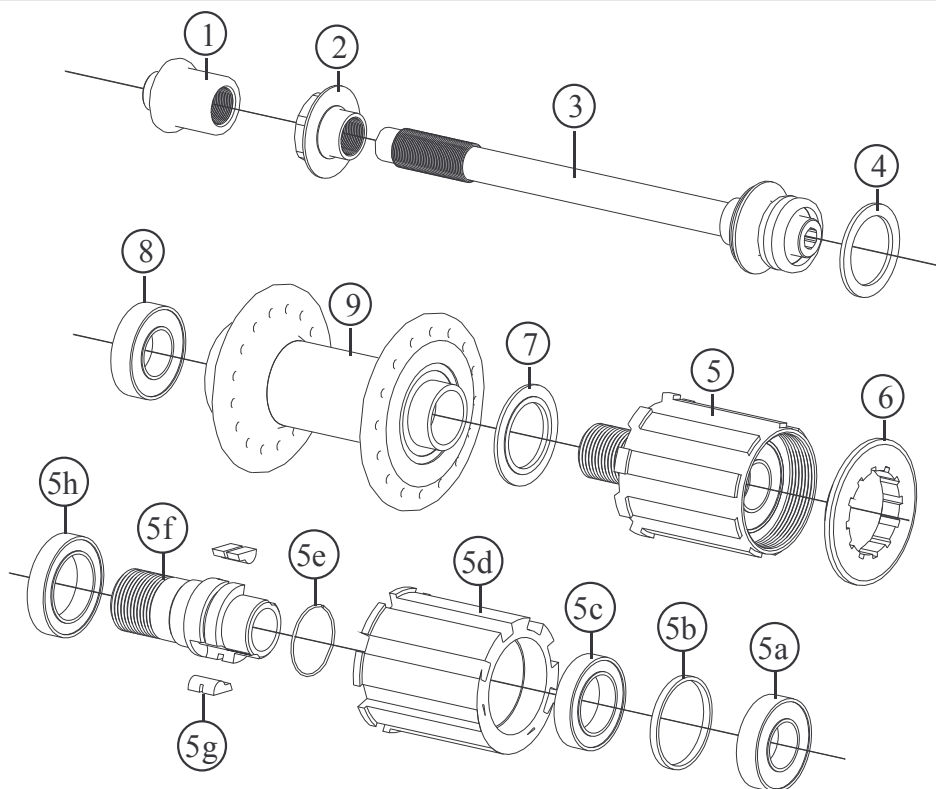
Specifications are subject to change without notice

# FRM

## Rear Hub for Road Only

### FL-R TEAM CA

**2007 Prices for Italian consumers only**



**ALSO SUPPLIED ON WHEELSET FL-R 21Aerolite, FL-R 23 Aerolite Carbon and FL-R24 Aerolite Carbon Zipp**

Item no.	Code	DESCRIPTION	Price Euro	INTERCHANGEABILITY				
				FL-R Comp 2004/05	FL-R Pro 2004/05	FL-R Pro 2006	SP-R Team 04/05	SP-R Team 2006
1	RH003CA	Lock Nut for carbon fibre axle / Light alloy	3,50	X	X	X	X	X
2	RH02CCA	Inner Nut for carbon fibre axle / Light alloy	3,00	X	X	X	X	X
3	FH04CCA	Carbon Fibre Axle with bonded Ends (Stainless Steel Thread)	25,50	X	X	X	X	X
4	3FH02DS	Rubber Seal: 24x17x1	0,25	A	A	A	X	A
5	RH4SD16TS	Freehub Body Ass.: Shimano Compat. Light Alloy/Titanium	110,00	B	A	A	A	A
5	RH4SD16TC	Freehub Body Ass.: Campy Compat. Light Alloy/Titanium	110,00					
6	RHLRSH11	Lock-ring in light alloy for cog-set – Shimano 11T	6,70	A	A	A	A	A
6	RHLRSH12	Lock-ring in light alloy for cog-set – Shimano 12T	6,70	A	A	A	A	A
6	RHLRCA11	Lock-ring in light alloy for cog-set – Campy 11T	6,70	A	A	A	A	A
6	RHLRCA12	Lock-ring in light alloy for cog-set – Campy 12T	6,70	A	A	A	A	A
5a	HB24126	Freewheel Body Outer Bearing 24x12x6 mm 6901 2RS	9,00	A	A	A	A	A
5b	RH04SL1	Freewheel Body Bearing Spacer / Light Alloy	0,50	A	A	A	A	A
5c	HB24155	Freewheel Body Middle Bearing 24 x 15 x 5 mm 6802 2RS	9,50	A	A	A	A	A
5d	RH04SLS	Freehub Shell Shimano Compat. Light Alloy	29,00	A	A	A	A	A
5d	RH04SLC	Freehub Shell Campy Compat. Light Alloy	29,00					
5e	RHLS07	Lips spring 0,7 mm	0,50	A	A	A	A	A
5f	RH04SD5	Freewheel Body Fixing Bolt M15x1start / Titanium	40,00	B	A	A	A	A
5g	RH04LP	Freewheel lip /High Tensile Steel	5,40 pc	A	A	A	A	A
5h	HB26175	Freewheel Body Inner Bearing 26 x 17 x 5 mm 6803 2RS	11,50					
7	RH04SL3B	Freewheel Body Washer / Hardened Steel. 1,5 mm thick	3,00	X	X	X	X	X
8	HB24126	Bearing 24x12x6 mm 6901 2RS	9,90	A	A	A	A	A
9	RH05G24S	Hub Body M15 24 h: Light Alloy Flanges / Carbon Fibre – Silver	115,00	X	X	X	X	X
9	RH05G28S	Hub Body M15 28 h: Light Alloy Flanges / Carbon Fibre – Silver	115,00	X	X	X	X	X
9	RH05G32S	Hub Body M15 32 h: Light Alloy Flanges / Carbon Fibre – Silver	115,00	X	X	X	X	X
9	RH05G24G	Hub Body M15 24 h: Light Alloy Flanges / Carbon Fibre – Gold	115,00	X	X	X	X	X
9	RH05G28G	Hub Body M15 28 h: Light Alloy Flanges / Carbon Fibre – Gold	115,00	X	X	X	X	X
9	RH05G32G	Hub Body M15 32 h: Light Alloy Flanges / Carbon Fibre – Gold	115,00	X	X	X	X	X

Note: Modified parts from model 2006 A: Same parts B: Parts are usable, but different in material, appearance, finish, size. X: Non-interchangeable

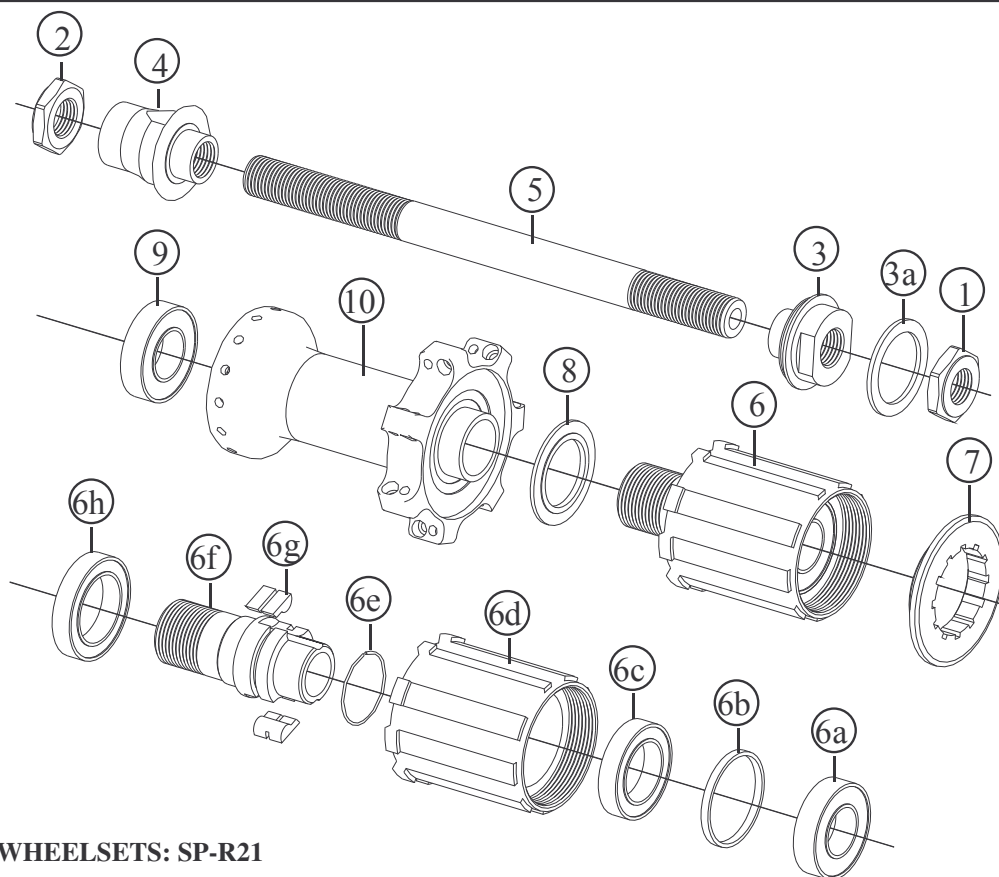
Specifications are subject to change without notice

# FRM

Rear Hub for Road Only

## SP-R TEAM

2007 Prices for Italian consumers only



SUPPLIED AS WHEELSETS: SP-R21

Item no.	Code	DESCRIPTION	Price Euro	INTERCHANGEABILITY					
				FL-R Comp SD	FL-R Pro SD	FL-R Team SD	SP Comp SD	SP Pro SD	
1	RH01A	Right Hand Lock Nut: M10 x 17 mm / 4,5 mm thick / Steel	1,50	A	A	A	A	A	
2	RH01B	Left hand Lock Nut: M10x17 mm / 4,5 mm / Light Alloy	1,90	B	A	A	B	A	
3	RH02CR	Right Hand Inner Nut: M10 x 16 mm / Light Alloy	3,00	A	A	A	A	A	
4	RH02DL	Left Hand Inner Nut: M10 x 16 mm /Light Alloy	3,50	X	X	A	A	A	
5	RH03AA	Hub Axle 140,6 mm / Dia. 10 mm / Light alloy	18,60	B	A	A	B	A	
6	RH4SD16TS	Freehub Body Ass.: Shimano Compat. Light Alloy/Titanium	110,00	X	X	A	X	X	
6	RH4SD16TC	Freehub Body Ass.: Campy Compat. Light Alloy/Titanium	110,00	A	A	A	A	A	
7	RHLRSH11	Lock-ring in light alloy for cog-set – Shimano 11T	6,70	A	A	A	A	A	
7	RHLRSH12	Lock-ring in light alloy for cog-set – Shimano 12T	6,70						
7	RHLRCA11	Lock-ring in light alloy for cog-set – Campy 11T	6,70						
7	RHLRCA12	Lock-ring in light alloy for cog-set – Campy 12T	6,70						
6a	HB24126	Freewheel Body Outer Bearing 24x12x6 mm 6901 2RS	9,00						
6b	RH04SL1	Freewheel Body Bearing Spacer / Light Alloy	0,50						
6c	HB24155	Freewheel Body Middle Bearing 24 x 15 x 5 mm 6802 2RS	9,50						
6d	RH04SLS	Freehub Shell Shimano Compat. Light Alloy	29,00						
6d	RH04SLC	Freehub Shell Campy Compat. Light Alloy	29,00	A	A	A	A	A	
6e	RHLS07	Lips spring 0,7 mm	0,50	A	A	A	A	A	
6f	RH04SD5	Freewheel Body Fixing Bolt M16x1 (2 starts)/ Titanium	40,00	A	A	A	A	A	
6g	RH04LP	Freewheel lip /High Tensile Steel	5,40 pc	X	X	A	X	X	
6h	HB26175	Freewheel Body Inner Bearing 26 x 17 x 5 mm 6803 2RS	11,50	A	A	A	A	A	
8	RH04SL3A	Freewheel Body Washer / Hardened Steel. 2,5 mm thick	3,00	A	A	A	A	A	
9	HB24126	Bearing 24x12x6 mm 6901 2RS	9,00	A	A	A	A	A	
10	RH05H28G	Hub Body M15 28 h: Gold anodised Flanges / Carbon Fibre	100,00	X	X	X	X	X	
10	RH05H28S	Hub Body M15 28 h: Silver anodised Flanges / Carbon Fibre	100,00	X	X	X	X	X	

A: Same parts B: Parts are usable, but different in material, appearance, finish, size. X: Non-interchangeable

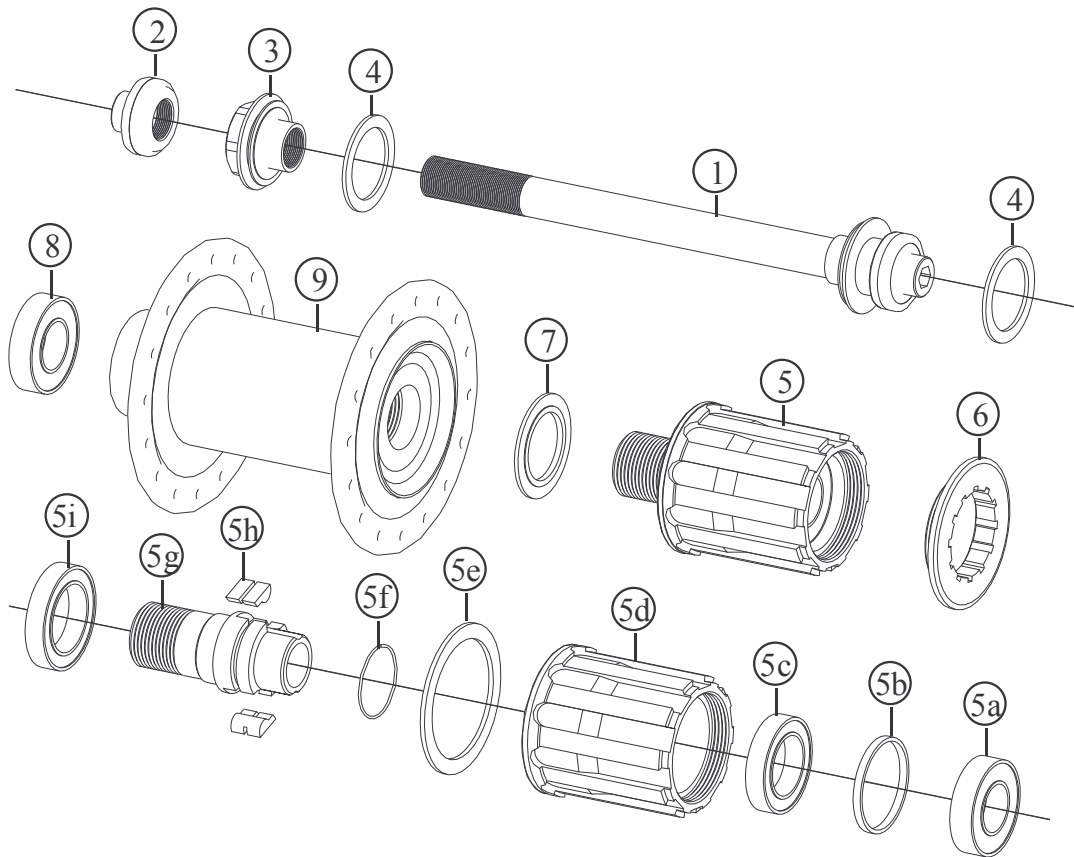
Specifications are subject to change without notice

# FRM

Rear Hub for MTB

## FL-M TEAM - Modified

2007 Prices for Italian consumers only



### SUPPLIED ON WHEELSETS: FL-M21 ZTR

Item no.	Code	DESCRIPTION	Price Euro	INTERCHANGEABILITY					
				FL-M Comp/Pro 04-05	FL-M Comp/Pro Disc 04/05	SP-M Pro	FL-M Pro 2006	FL-M Pro Disc 2006	FL-M Team Disc 2006
1	RHA01D	Hub Axle Assembled MTB. Lock-nut 135 mm / Light alloy	21,00	X	X	X	A	A	A
2	RHA01A	Axle Cup End for 5mm Allen Key / Light Alloy	1,90	X	X	X	A	A	A
3	RHA01C	Left Hand Adjustable Inner Nut / Light Alloy	3,00	X	X	X	A	A	A
4	3FH02DS	Rubber Seal: 24x17x1	0,25	A	A	X	A	A	A
5	RH4SD16TDSS	Freehub Body Assembly with Dust Seal. Light Alloy/Steel	105,50	B	B	B	A	A	A
6	RHLRSH11	Lock-ring in light alloy for cog-set –Shimano 11T (series)	6,70	A	A	A	A	A	A
6	RHLRSH12	Lock-ring in light alloy for cog-set –Shimano 12T (optional)	6,70	A	A	A	A	A	A
5a	HB24126	Freewheel Body Outer Bearing 24x12x6 mm 6901 2RS	9,00	A	A	A	A	A	A
5b	RH04SL1	Freewheel Body Bearing Spacer / Light Alloy	0,50	A	A	A	A	A	A
5c	HB24155	Freewheel Body Middle Bearing 24 x 15 x 5 mm 6802 2RS	9,50	B	B	B	A	A	A
5d	RH04SLSDSS	Freewheel Shell for Shimano with Dust Seal / Light Alloy	29,00	A	A	A	A	A	A
5e	RH04FWDS	Rubber Dust Seal for Freewheel Body	0,50	A	A	A	A	A	A
5f	RHLS07	Lips Spring 0,7 mm	0,50						
5g	RH04SD5	Freewheel Body Fixing Bolt M16x1 (2 starts) / HT Steel	35,00						
5h	RH04LP	Freewheel lip/High Tensile Steel pc.	5,40						
5i	HB26175	Freewheel Body Inner Bearing 26 x 17 x 5 mm 6803 2RS	11,50	X	X	X	A	A	A
7	RH04SL3A	Freewheel Body Washer / High Tens. Steel. 2,5 mm thick	3,00	A	A	A	A	A	A
8	HB24126	Freewheel Body Outer Bearing 24x12x6 mm 6901 2RS	9,00	A	A	A	A	A	A
9	FLTRB32	Hub Body Carbon fibre/Alloy. Gold anodised. 32H	100,00	X	X	X	B	X	X
9	FLTRB28	Hub Body Carbon fibre/Alloy. Gold anodised. 28H	100,00	X	X	X	B	X	X

Note: Modified parts from model 2006

A: Same parts B: Parts are usable, but different in material, appearance, finish, size. X: Non-interchangeable

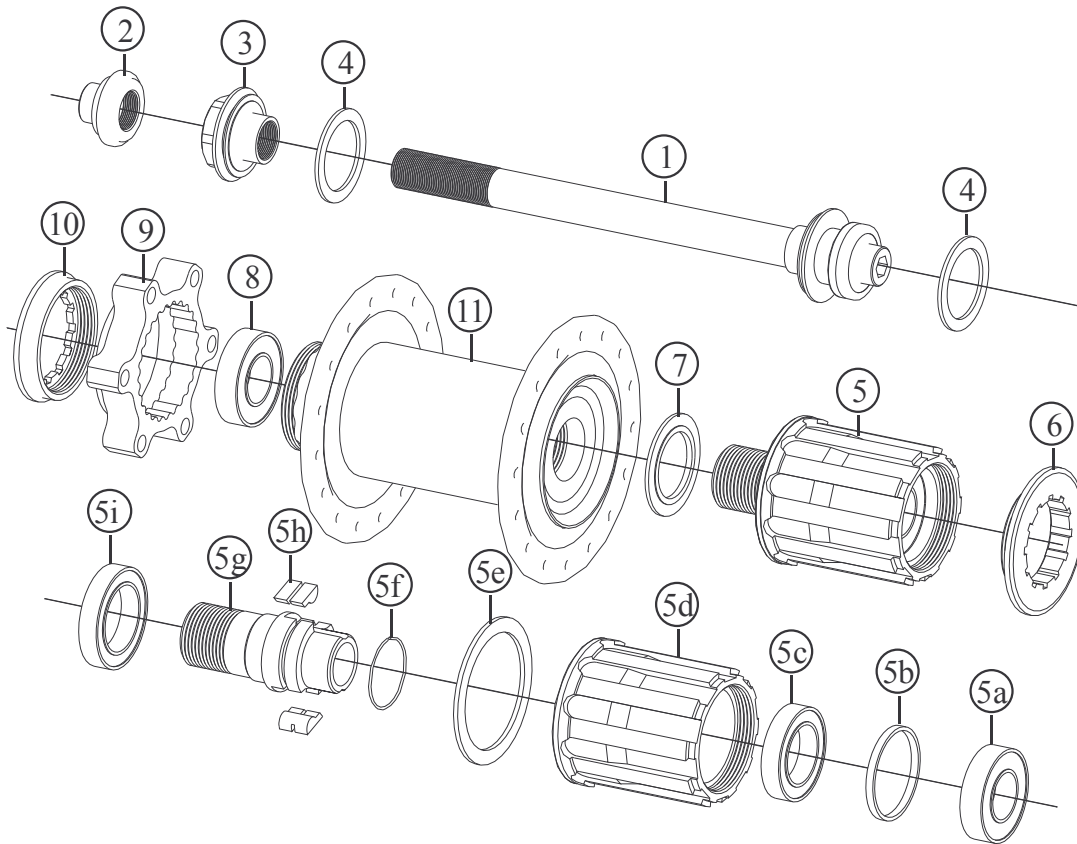
Specifications are subject to change without notice

# FRM

Rear Hub for MTB

## FL-M TEAM DISC - Modified

2007 Prices for Italian consumers only



SUPPLIED ON WHEELSETS: FL-M21 Olympic Disc, FL-M Tubular Disc, FL-M21 Lefty Disc

Item no.	Code	DESCRIPTION	Price Euro	INTERCHANGEABILITY					
				FL-M Pro Disc 2006	FL-M Comp/Pro Disc 04/05	FL-M Pro 2006	FL-M Comp/Pro Disc 2004/05	SP-M Comp	SP-M Pro
1	RHA01B	Hub Axle assembled. Lock-nut 135 mm / Light alloy	21,00	A	X	A	X	X	X
2	RHA01A	Axle Cup End for 5mm Allen Key / Light Alloy	1,90	A	X	A	X	X	X
3	RHA01C	Left Hand Adjustable Inner Nut / Light Alloy	3,00	A	X	A	X	X	X
4	3FH02DS	Rubber Seal: 24x17x1	0,25	A	X	A	X	X	X
5	RH4SD16TDSS	Freehub Body Assembly with Dust Seal. Light Alloy/Steel	105,50	A	B	A	B	B	B
6	RHLRSH11	Lock-ring in light alloy for cog-set –Shimano 11T (series)	6,70	A	A	A	A	A	A
6	RHLRSH12	Lock-ring in light alloy for cog-set –Shimano 12T (optional)	6,70	A	A	A	A	A	A
5a	HB24126	Freewheel Body Outer Bearing 24x12x6 mm 6901 2RS	9,00	A	A	A	A	A	A
5b	RH04SL1	Freewheel Body Bearing Spacer / Light Alloy	0,50	A	A	A	A	A	A
5c	HB24155	Freewheel Body Middle Bearing 24 x 15 x 5 mm 6802 2RS	9,50	A	B	A	B	B	B
5d	RH04SLSDSS	Freewheel Shell for Shimano with Dust Seal / Light Alloy	29,00	A	A	A	A	A	A
5e	RH04FWDS	Rubber Dust Seal for Freewheel Body	0,50	A	A	A	A	A	A
5f	RHLS07	Lips Spring 0,7 mm	0,50	A	X	A	X	X	X
5g	RH04SD5	Freewheel Body Fixing Bolt M16x1 (2 starts) / HT Steel	35,00						
5h	RH04LP	Freewheel lip /High Tensile Steel	5,40						
5i	HB26175	Freewheel Body Inner Bearing 26 x 17 x 5 mm 6803 2RS	11,50						
7	RH04SL3A	Freewheel Body Washer / High Tens. Steel. 2,5 mm thick	3,00	A	A	A	A	A	A
8	HB24126	Freewheel Body Outer Bearing 24x12x6 mm 6901 2RS	9,00	A	A	A	A	A	A
9	DH-DF2	Disc Flange 6 holes International Std. (Black anodised)	25,00	A	X	X	B	X	X
10	DH-LR1	Lock Ring for Disc Flange (Gold anodised)	8,50	A	X	X	A	X	X
11	FLMTDR28	Hub Body 28 holes / Carbon fibre-Light Alloy – Gold	104,00	B	X	B	X	X	X
11	FLMTDR32	Hub Body 32 holes / Carbon Fibre-Light Alloy - Gold	104,00	B	X	B	X	X	X

Note: Modified parts from model 2006

A: Same parts B: Parts are usable, but different in material, appearance, finish, size. X: Non-interchangeable

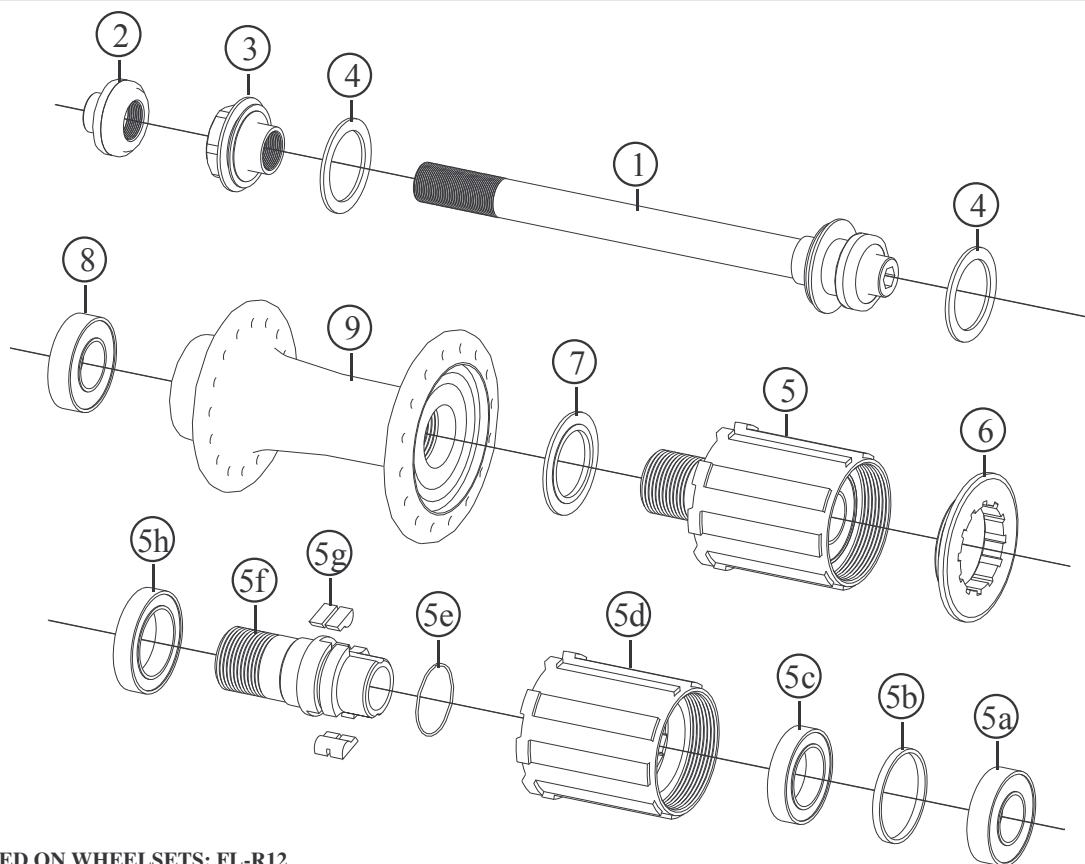
Specifications are subject to change without notice

# FRM

## Rear Hub for Road

### FL-R PRO - MODIFIED

**2007 Prices for Italian consumers only**



ALSO SUPPLIED ON WHEELSETS: FL-R12

Item no.	Code	DESCRIPTION	Price Euro	INTERCHANGEABILITY						
				FL-M Team 2006	FL-M Team Disc 2006	FL-R Team & CA 2005/06	FL-M Pro 2004/05	SP-M Comp Pro 04/05	SP-R Comp Pro 04/05	SP-R Team 04/06
1	RHA01B	Hub Axle Assembled Road. Lock-nut 130 mm / Light alloy	21,00	X	X	X	X	X	X	X
2	RHA01A	Short Axle Cup End for 5mm Allen Key / Light Alloy	1,90	X	X	X	X	X	X	X
3	RHA01C	Left Hand Adjustable Inner Nut / Light Alloy	3,00	A	A	X	X	X	X	X
4	3FH02DS	Rubber Seal: 24x17x1	0,25	A	A	A	A	A	X	X
5	RH4SD16TS	Freehub Body Ass.: Shimano Compat. Light Alloy/Titanium	110,00	A	A	B	B	B	B	B
5	RH4SD16TC	Freehub Body Ass.: Campy Compat. Light Alloy/Titanium	110,00	A	A	B	B	B	B	B
6	RHLRSH11	Lock-ring in light alloy for cog-set – Shimano 11T	6,70	A	A	A	A	A	A	A
6	RHLRSH12	Lock-ring in light alloy for cog-set – Shimano 12T	6,70	A	A	A	A	A	A	A
6	RHLRCA11	Lock-ring in light alloy for cog-set – Campy 11T	6,70	A	A	A	A	A	A	A
6	RHLRCA12	Lock-ring in light alloy for cog-set – Campy 12T	6,70	A	A	A	A	A	A	A
5a	HB24126	Freewheel Body Outer Bearing 24x12x6 mm 6901 2RS	9,00	A	A	A	A	A	A	A
5b	RH04SL1	Freewheel Body Bearing Spacer / Light Alloy	0,50	A	A	A	A	A	A	A
5c	HB24155	Freewheel Body Middle Bearing 24 x 15 x 5 mm 6802 2RS	9,50	A	A	A	A	A	A	A
5d	RH04SLS	Freehub Shell Shimano Compat. Light Alloy	29,00	A	A	B	B	B	B	B
5d	RH04SLC	Freehub Shell Campy Compat. Light Alloy	29,00	A	A	B	B	B	B	B
5e	RHLS07	Lips spring 0,7 mm	0,50	A	A	A	A	A	A	A
5f	RH04SD5	Freewheel Body Fixing Bolt M16x1 (2 starts)/ Titanium	40,00	A	A	B	B	B	B	B
5g	RH04LP	Freewheel lip /High Tensile Steel	5,40 pc	A	A	A	A	A	A	A
5h	HB26175	Freewheel Body Inner Bearing 26 x 17 x 5 mm 6803 2RS	11,50	A	A	A	A	A	A	A
7	RH04SL3A	Freewheel Body Washer / High Tens. Steel. 2,5 mm thick	3,00	A	A	A	A	A	A	A
8	HB24126	Freewheel Body Outer Bearing 24x12x6 mm 6901 2RS	9,00	A	A	A	A	A	A	A
9	RH06SH28	Hub Body M16 28 holes / Light Alloy – Black	54,00	X	X	X	X	X	X	X
9	RH06SH32	Hub Body M16 32 holes / Light Alloy – Black	54,00	X	X	X	X	X	X	X

Note: Modified parts from model 2006 A: Same parts. B: Parts are usable, but different in material, appearance, finish, size, etc. X: Non-interchangeable

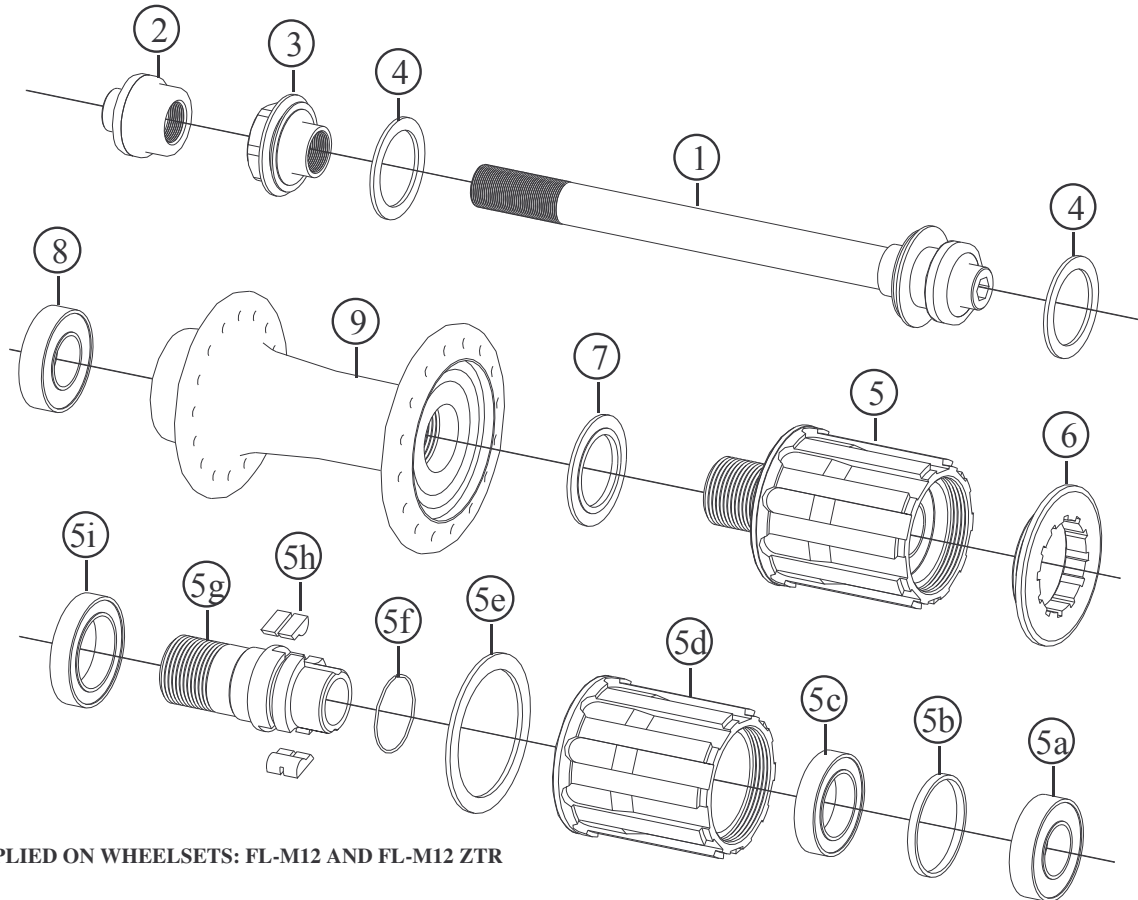
Specifications are subject to change without notice

# FRM

Rear Hub for MTB

## FL-M PRO - Modified

2007 Prices for Italian consumers only



ALSO SUPPLIED ON WHEELSETS: FL-M12 AND FL-M12 ZTR

Item no.	Code	DESCRIPTION	Price Euro	INTERCHANGEABILITY						
				FL-M Team 2006	FL-M Team Disc 2006	FL-R Team & CA 2005/06	FL-M Pro 2004/05	SP-M Comp Pro 04/05	SP-R Comp Pro 04/05	SP-R Team 04/06
1	RHA01B	Hub Axle Assembled Road. Lock-nut 130 mm / Light alloy	21,00	X	X	X	X	X	X	X
2	RHA01L	Long Axle Cup End for 5mm Allen Key / Light Alloy	1,90	X	X	X	X	X	X	X
3	RHA01C	Left Hand Adjustable Inner Nut / Light Alloy	3,00	A	A	X	X	X	X	X
4	3FH02DS	Rubber Seal: 24x17x1	0,25	A	A	A	A	A	X	X
5	RH4SD16TDSS	Freehub Body Assembly with Dust Seal. Light Alloy/Steel	105,50	A	A	B	B	B	B	B
6	RHLRSH11	Lock-ring in light alloy for cog-set - Shimano 11T (series)	6,70	A	A	A	A	A	A	A
6	RHLRSH12	Lock-ring in light alloy for cog-set - Shimano 12T (optional)	6,70	A	A	A	A	A	A	A
5a	HB24126	Freewheel Body Outer Bearing 24x12x6 mm 6901 2RS	9,00	A	A	A	A	A	A	A
5b	RH04SL1	Freewheel Body Bearing Spacer / Light Alloy	0,50	A	A	A	A	A	A	A
5c	HB24155	Freewheel Body Middle Bearing 24 x 15 x 5 mm 6802 2RS	9,50	A	A	A	A	A	A	A
5d	RH04SLSDSS	Freewheel Shell for Shimano with Dust Seal / Light Alloy	29,00	A	A	A	A	A	A	A
5e	RH04FWDS	Rubber Dust Seal for Freewheel Body	0,50	X	X	X	A	A	X	X
5f	RHLS07	Lips Spring 0,7 mm	0,50	A	A	A	A	A	A	A
5g	RH04SD5	Freewheel Body Fixing Bolt M16x1 (2 starts) / HT Steel	35,00	A	A	B	B	B	B	B
5h	RH04LP	Freewheel lip /High Tensile Steel	5,40	A	A	A	A	A	A	A
5i	HB26175	Freewheel Body Inner Bearing 26 x 17 x 5 mm 6803 2RS	11,50	A	A	A	A	A	A	A
7	RH04SL3A	Freewheel Body Washer / High Tens. Steel. 2,5 mm thick	3,00	A	A	A	A	A	A	A
8	HB24126	Freewheel Body Outer Bearing 24x12x6 mm 6901 2RS	9,00	A	A	A	A	A	A	A
9	RH06SH28	Hub Body M16 28 holes / Light Alloy - Black	54,00	X	X	X	X	X	X	X
9	RH06SH32	Hub Body M16 32 holes / Light Alloy - Black	54,00	X	X	X	X	X	X	X

Note: Modified parts from model 2006 A: Same parts. B: Parts are usable, but different in material, appearance, finish, size, etc. X: Non-interchangeable

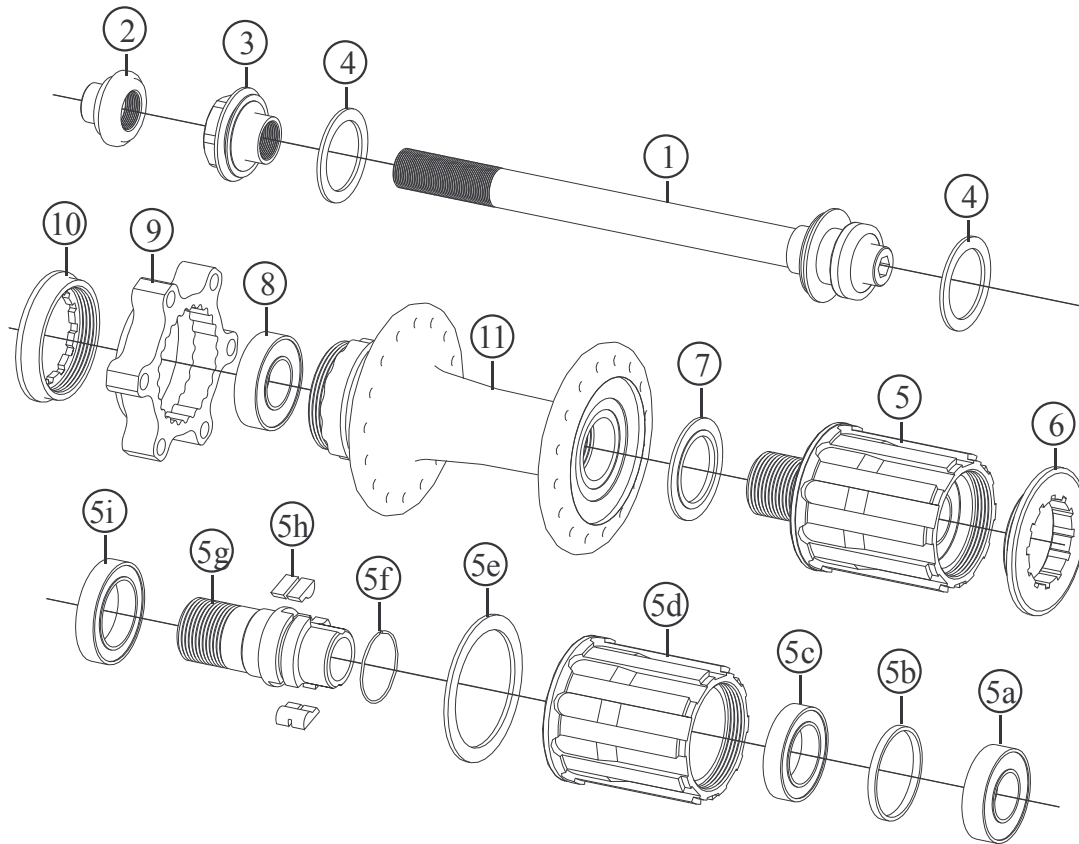
Specifications are subject to change without notice

# FRM

Rear Hub for MTB

## FL-M PRO DISC - Modified

2007 Prices for Italian consumers only



ALSO SUPPLIED AS WHEELSETS: FL-M12 Disc and FL-M12 Olympic Disc

Item no.	Code	DESCRIPTION	Price Euro	INTERCHANGEABILITY				
				FL-M Team Disc 2006	FL-M Comp/Pro 2004/05	FL-M Pro 2006	FL-M Comp/Pro Disc 2004/05	SP-M Comp
1	RHA01B	Hub Axle assembled. Lock-nut 135 mm / Light alloy	21,00	A	X	A	X	X
2	RHA01A	Axle Cup End for 5mm Allen Key / Light Alloy	1,90	A	X	A	X	X
3	RHA01C	Left Hand Adjustable Inner Nut / Light Alloy	3,00	A	X	A	X	X
4	3FH02DS	Rubber Seal: 24x17x1	0,25	A	X	A	X	X
5	RH4SD16TDSS	Freehub Body Assembly with Dust Seal. Light Alloy/Steel	105,50	A	B	A	B	B
6	RHLRSH11	Lock-ring in light alloy for cog-set -Shimano 11T (series)	6,70					
6	RHLRSH12	Lock-ring in light alloy for cog-set -Shimano 12T (optional)	6,70					
5a	HB24126	Freewheel Body Outer Bearing 24x12x6 mm 6901 2RS	9,00	A	A	A	A	A
5b	RH04SL1	Freewheel Body Bearing Spacer / Light Alloy	0,50	A	A	A	A	A
5c	HB24155	Freewheel Body Middle Bearing 24 x 15 x 5 mm 6802 2RS	9,50	A	A	A	A	A
5d	RH04SLSDSS	Freewheel Shell for Shimano with Dust Seal / Light Alloy	29,00	A	A	A	A	A
5e	RH04FWDS	Rubber Dust Seal for Freewheel Body	0,50	A	B	A	B	B
5f	RHLS07	Lips Spring 0,7 mm	0,50	A	A	A	A	A
5g	RH04SD5	Freewheel Body Fixing Bolt M16x1 (2 starts) / HT Steel	35,00	A	A	A	A	A
5h	RH04LP	Freewheel lip /High Tensile Steel pc.	5,40					
5i	HB26175	Freewheel Body Inner Bearing 26 x 17 x 5 mm 6803 2RS	11,50					
7	RH04SL3A	Freewheel Body Washer / High Tens. Steel. 2,5 mm thick	3,00	A	A	A	A	A
8	HB24126	Freewheel Body Outer Bearing 24x12x6 mm 6901 2RS	9,00	A	A	A	A	A
9	DH-DF2	Disc Flange 6 holes International Std. (Black anodised)	25,00	A	X	X	B	X
10	DH-LR1	Lock Ring for Disc Flange (Gold anodised)	8,50	A	X	X	A	X
11	RH05H28	Hub Body M16 28 holes / Light Alloy - Black	57,00	B	X	B	X	X
11	RH05H32	Hub Body M16 32 holes / Light Alloy - Black	57,00	B	X	B	X	X

Note: Modified parts from model 2006

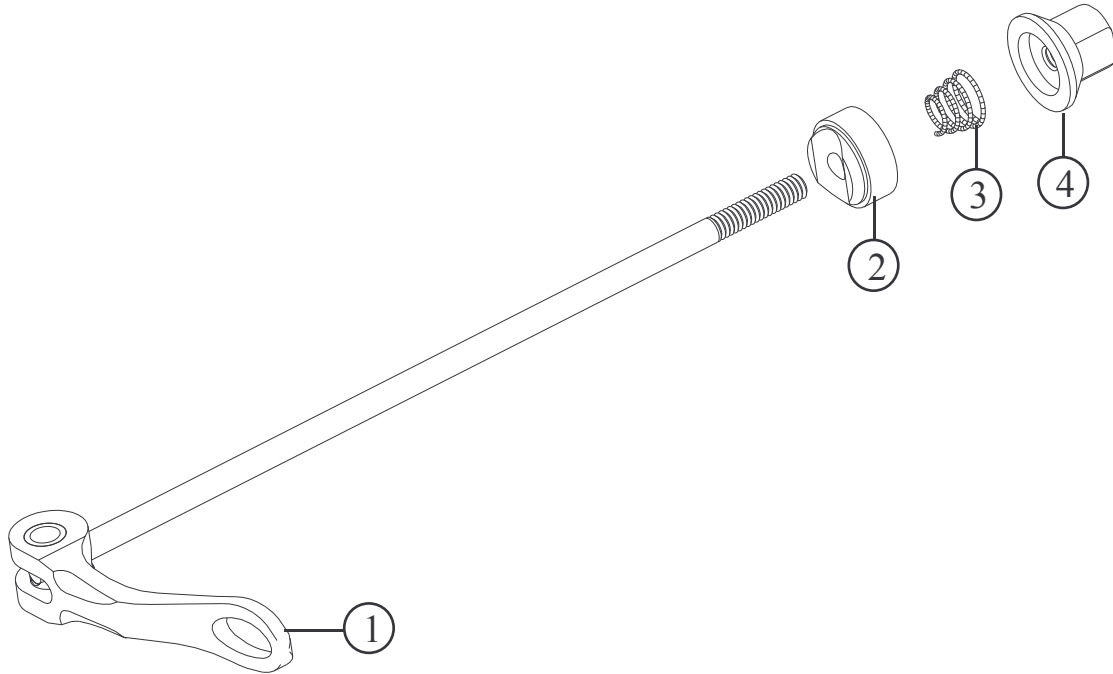
A: Same part B: Parts are usable, but different in material, appearance, finish, size X: Non-interchangeable

Specifications are subject to change without notice



**FRM**  
Quick Release  
**FRM Team**

**2007 Prices for Italian consumers only**



Item no.	Code	DESCRIPTION	Price Euro	INTERCHANGEABILITY					
				FRM1	FRM2	FRM3			
1	QRTLF	Front Team Lever Black & Axle Assembly (Titanium 4mm)	58,00						
1	QRTLFG	Front Team Lever Gold & Axle Assembly (Titanium 4mm)	58,00						
1	QRTLR	Rear Team Lever Black & Axle Assembly (Titanium 4mm)	58,00						
1	QRTLRG	Rear Team Lever Gold & Axle Assembly (Titanium 4mm)	58,00						
2	QR00A	Washer	2,50						
3	QR00B	Spring	0,20						
4	QR00C	Nut for Team axle	2,50						

A: Same parts  
B: Parts are usable, but different in material, appearance, finish, size.  
X: Non-interchangeable

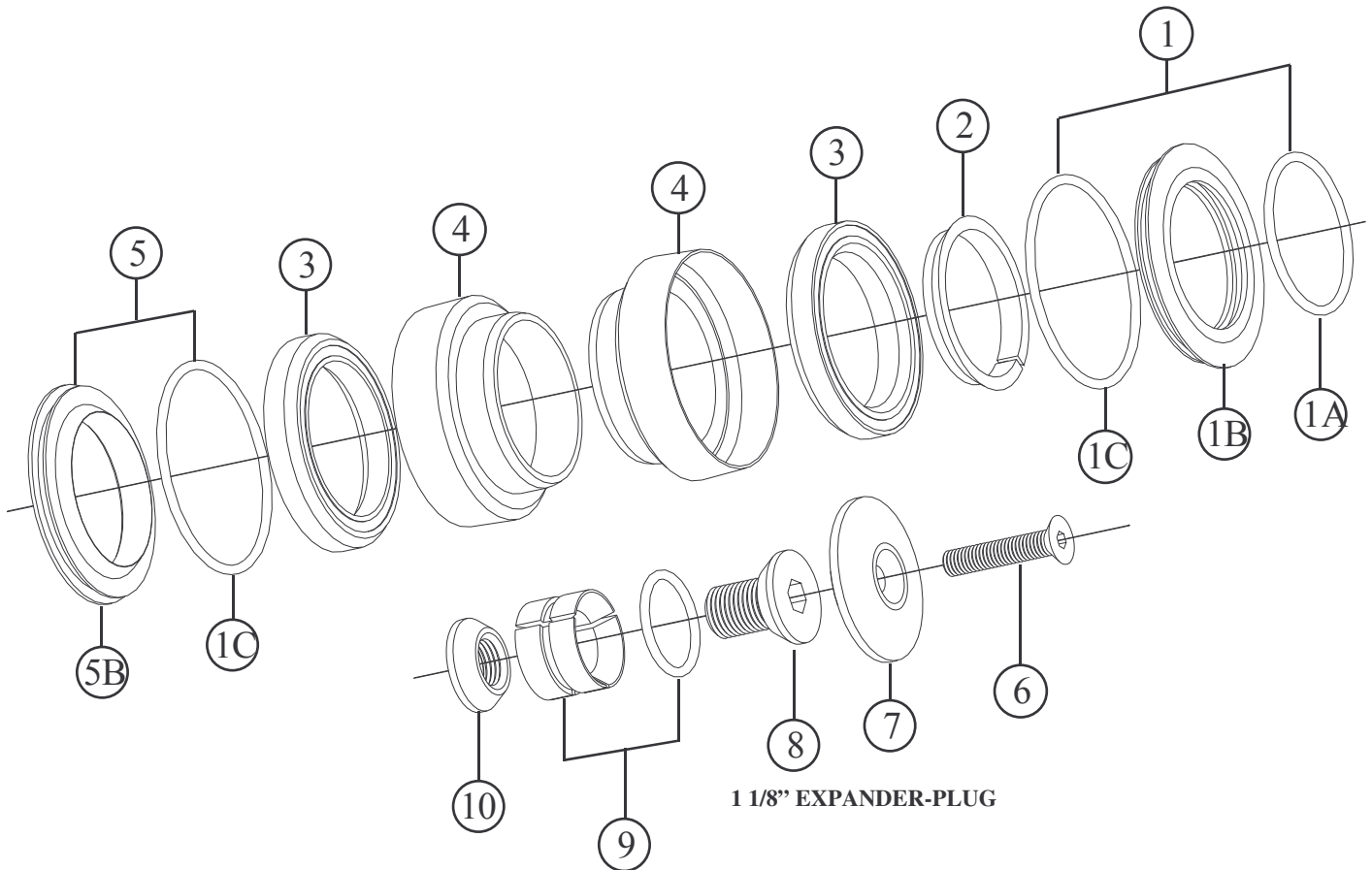
Specifications are subject to change without notice

# FRM

Head Set

## C-SET & C-SET TEAM 1 1/8"

2007 Prices for Italian consumers only



Item no.	Code	DESCRIPTION	Price Euro	INTERCHANGEABILITY						
				C-Set 1"	A-Set 1"	A-Set 1 1/8"	C-Set OS			
1	HSC201	Upper Head Cone Assembly	5,60	X	X	X	A			
1A	OR2112	O-Ring 2112 (I.D.28,30x1,78 mm)	-	X	X	X	A			
1B	HSC201B	Upper Head Cone Housing / Light Alloy	5,40	X	X	X	A			
1C	OR2137	O-Ring 2137 (I.D.33,05x1,78 mm)	-	X	A	X	A			
2	HSC202	Upper Head Split Cone / Light Alloy	2,30	X	X	X	A			
3	TH-872	Cartridge Bearing Micro ABC 36° x 36° 41,5x30,15x6,5	9,50	X	X	X	A			
3	TH-872SS	As above but in Stainless Steel for the Team model	18,00	X	X	B	A			
4	HSC204	Lower or Upper Head Cup Housing 34,1 mm / Black	6,40	X	X	X	A			
4	HSC204G	Lower or Upper Head Cup Housing 34,1 mm / Gold	10,40	X	X	B	X			
5	HSC205	Lower Head Cone Assembly	3,40	X	X	X	X			
5B	HSC205A	Lower Head Cone Housing 30 mm / Light Alloy	3,30	X	X	X	X			
6	TSCCE525	Bolt for play adjustment M5 x 25 Cone-Head / Steel	0,20	A	A	A	A			
6	TSCCE525E	As above but in light alloy (gold) for the Team model	2,20	B	B	B	A			
7	EP201	Cap / Light Alloy	4,00	X	X	A	A			
7	EP201C	Cap / Carbon fibre for the Team model	9,00	X	X	A	A			
8	EP102	Male Cone Bolt / Light Alloy	2,00	A	A	A	A			
9	EP203	Three-Piece Expander with O-Ring 122	3,00	X	X	A	A			
10	EP104	Female Cone Nut / Light Alloy	1,00	A	A	A	A			

A: Same parts

B: Parts are usable, but different in material, appearance, finish, size.

X: Non-interchangeable

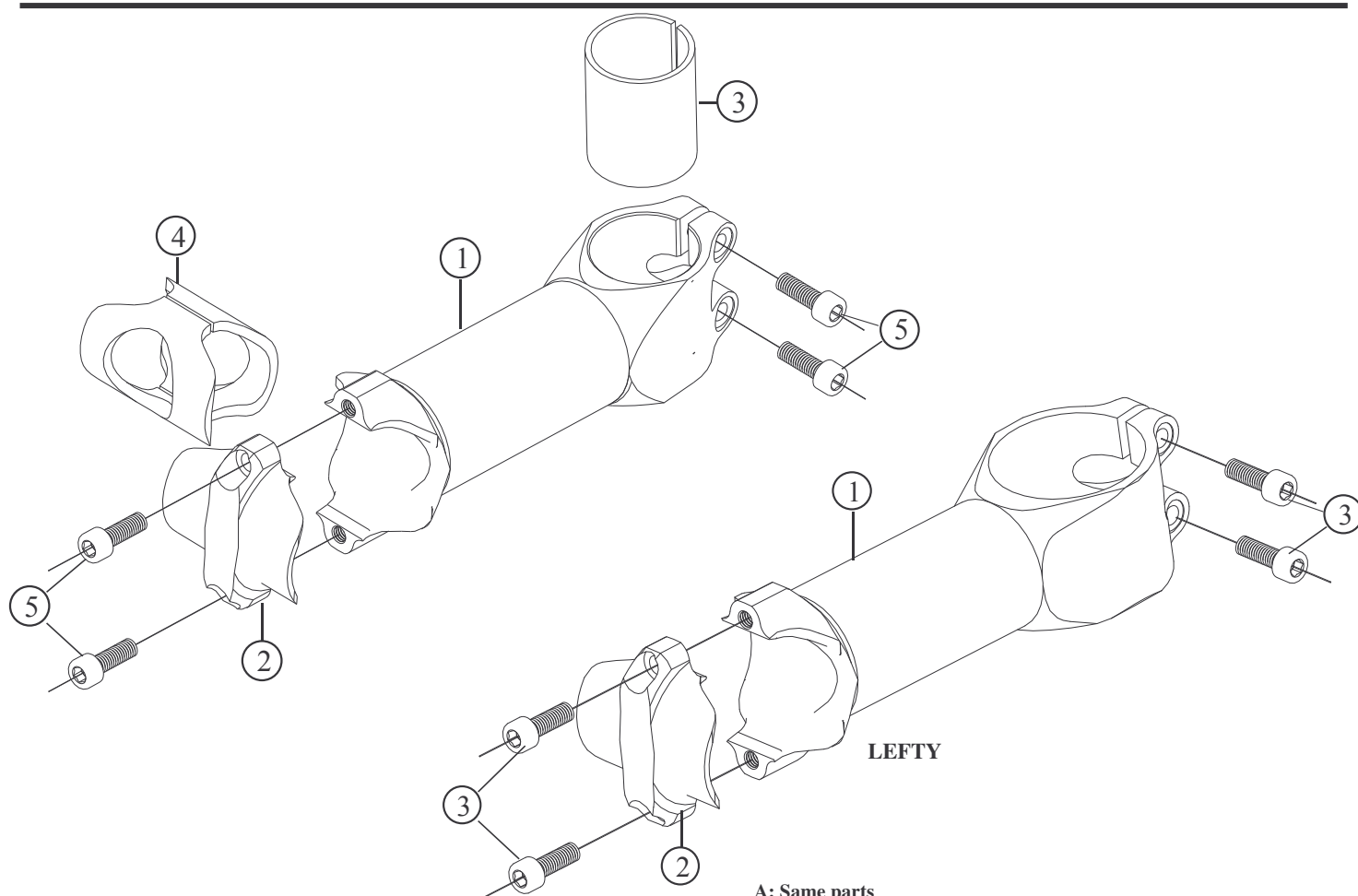
Specifications are subject to change without notice

# FRM

Stem for Road & MTB

## Web-Stem CF - Web-Stem FC Ti. – Web Stem 32 – Web Stem 32 Ti.- NEW Web-Stem CF Lefty - Web-Stem FC Lefty Ti. - NEW

2007 Prices for Italian consumers only



A: Same parts

Item no.	Code	DESCRIPTION	Price Euro	INTERCHANGEABILITY		
				Web Stem WC	Web Stem WC Ti	Net Stem
1	WS05AL	Carbon fibre Stem Shaft 90 mm (Gold or Black) 31,8 mm	77,00	X	X	X
1	WS05BL	Carbon fibre Stem Shaft 100 mm (Gold or Black) 31,8 mm	77,00	X	X	X
1	WS05CL	Carbon fibre Stem Shaft 110 mm (Gold or Black) 31,8 mm	77,00	X	X	X
1	WS05DL	Carbon fibre Stem Shaft 120 mm (Gold or Black) 31,8 mm	77,00	X	X	X
1	WS05EL	Carbon fibre Stem Shaft 130 mm (Gold or Black) 31,8 mm	77,00	X	X	X
1	WS05BL	Light alloy Stem Shaft 100 mm (Black) 31,8 mm	61,20	X	X	X
1	WS05CL	Light alloy Stem Shaft 110 mm (Black) 31,8 mm	61,20	X	X	X
1	WS05DL	Light alloy Stem Shaft 120 mm (Black) 31,8 mm	61,20	X	X	X
1	WS05EL	Light alloy Stem Shaft 130 mm (Black) 31,8 mm	61,20	X	X	X
1	WS05ALL	Carbon fibre Stem Lefty Shaft 90 mm (Gold or Black) 31,8 mm	90,00	X	X	X
1	WS05BLL	Carbon fibre Stem. Lefty Shaft 100 mm (Gold or Black) 31,8mm	90,00	X	X	X
1	WS05CLL	Carbon fibre Stem. Lefty Shaft 110 mm (Gold or Black) 31,8 mm	90,00	X	X	X
1	WS05DLL	Carbon fibre Stem. Lefty Shaft 120 mm (Gold or Black) 31,8 mm	90,00	X	X	X
1	WS05ELL	Carbon fibre Stem. Lefty Shaft 130 mm (Gold or Black) 31,8 mm	90,00	X	X	X
2	WS06B	Stem Cap / Black	12,00	X	X	X
2	WS06G	Stem Cap /Gold	12,00	X	X	X
3	WS03	Sleeve for 1" forks	3,00	A	A	X
4	WS04	Sleeve for 26,0 mm handlebars	7,20	X	X	X
5	TCC515S	Allen Bolt M5x15 / Steel	0,10	A	B	X
5	TCC515T	Allen Bolt M5x15 / Titanium	6,10	B	A	X

A: Same parts B: Parts are usable, but different in material, appearance, finish, size. X: Non-interchangeable

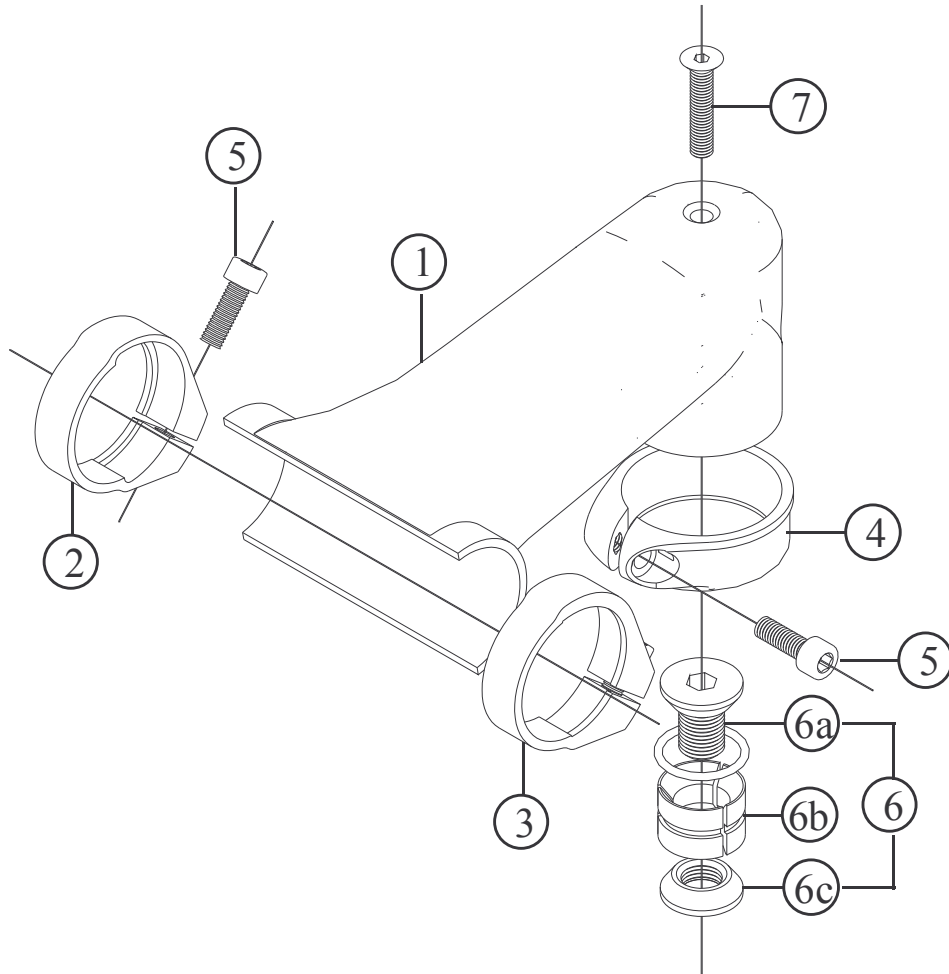
Specifications are subject to change without notice

# FRM

Stem for Road

## BLACK HOLE - NEW

2007 Prices for Italian consumers only



Item no.	Code	DESCRIPTION	Price Euro	INTERCHANGEABILITY			
				Web Stem WC	Web Stem CF Ti.	Seatpost ST-R11 ST-R21	Headset C-Set C-Set T.
1	BHSTM90	Carbon fibre Stem - Monocoque 90 mm 31,8 mm	240,00	X	X	X	X
1	BHSTM100	Carbon fibre Stem - Monocoque 100 mm 31,8 mm	240,00	X	X	X	X
1	BHSTM110	Carbon fibre Stem - Monocoque 110 mm 31,8 mm	240,00	X	X	X	X
1	BHSTM120	Carbon fibre Stem - Monocoque 120 mm 31,8 mm	240,00	X	X	X	X
1	BHSTM130	Carbon fibre Stem - Monocoque 130 mm 31,8 mm	240,00	X	X	X	X
2	BHHBCR	Right Hand Handlebar Clamp. 31,8 mm dia Black.	11,00	X	X	X	X
3	BHHBCL	Left Hand Handlebar Clamp. 31,8 mm dia Black.	11,00	X	X	X	X
4	STAC35B	SC35 Seat Clamp. 34,9 mm dia Black. With steel bolt	11,50	X	X	A	X
4	STAC35G	SC35 Seat Clamp. 34,9 mm dia Gold W. With steel bolt	11,50	X	X	A	X
5	TCC515T	Allen Bolt M5x15 / Titanium	6,10	X	A	A	X
6	EP100	Expander Assembly / Light Alloy	6,00	X	X	X	A
6a	EP102	Male Cone Bolt / Light Alloy	2,00	X	X	X	A
6b	EP203	Three-Piece Expander with O-Ring 122	3,00	X	X	X	A
6c	EP104	Female Cone Nut / Light Alloy	1,00	X	X	X	A
7	TSCCE525E	Bolt for play adjustment M5 x 25 Cone-Head / Light Alloy (Gold)	2,20	X	X	X	A

A: Same parts B: Parts are usable, but different in material, appearance, finish, size. X: Non-interchangeable

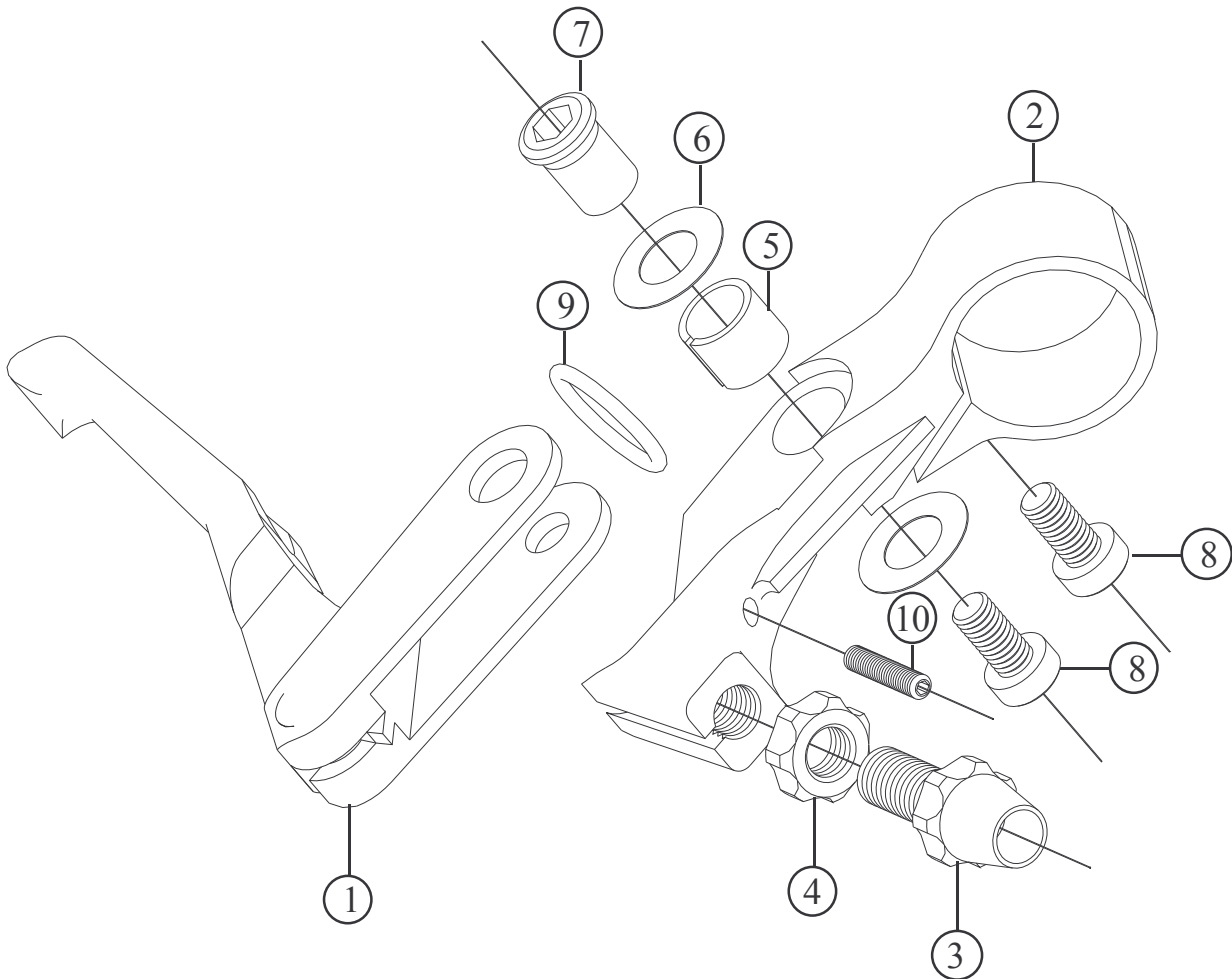
Specifications are subject to change without notice

# FRM

Brake Lever for MTB

**DP4 - DP4 SL**

**2007 Prices for Italian consumers only**



Item no.	Code	DESCRIPTION	Price Euro	INTERCHANGEABILITY				
				DP3	DP4 2003			
1	BL01R2	Right hand Brake Lever / Light Alloy	28,00	B	B			
1	BL01L2	Left Hand Brake Lever / Light Alloy	28,00	B	B			
2	BL02R	Right hand Brake Body / Light Alloy - Black	28,00	B	A			
2	BL02L	Left Hand Brake Body / Light Alloy - Black	28,00	B	A			
2	BL02RG	Right hand Brake Body / Light Alloy - Gold	28,00	B	A			
2	BL02LG	Left Hand Brake Body / Light Alloy - Gold	28,00	B	A			
3	BL03	Cable Adjusting Body / Light Alloy	3,20	A	A			
4	BL04	Cable Adjusting Nut / Light Alloy	2,00	A	A			
5	BL05	Bushing / DU	0,50	A	A			
6	BL06	Shim / Nylon 0,3 mm thick	0,05	A	A			
7	BL07	Pivot / Light Alloy	2,00	A	A			
8	TCC510	Allen bolt M5x10 / Steel	0,15	A	A			
8	TCC510E	Torx bolt M5x10 aluminium (DP4 SL)	1,70	B	B			
9	OR2056	Return Spring / Silicon O-Ring 2056 (I.D.14x1,78mm)	0,20	X	A			
10	BL08	Reach Adjusting Dowel	0,05	A	A			

**A:** Same parts

**B:** Parts are usable, but different in material, appearance, finish, size.

**X:** Non-interchangeable

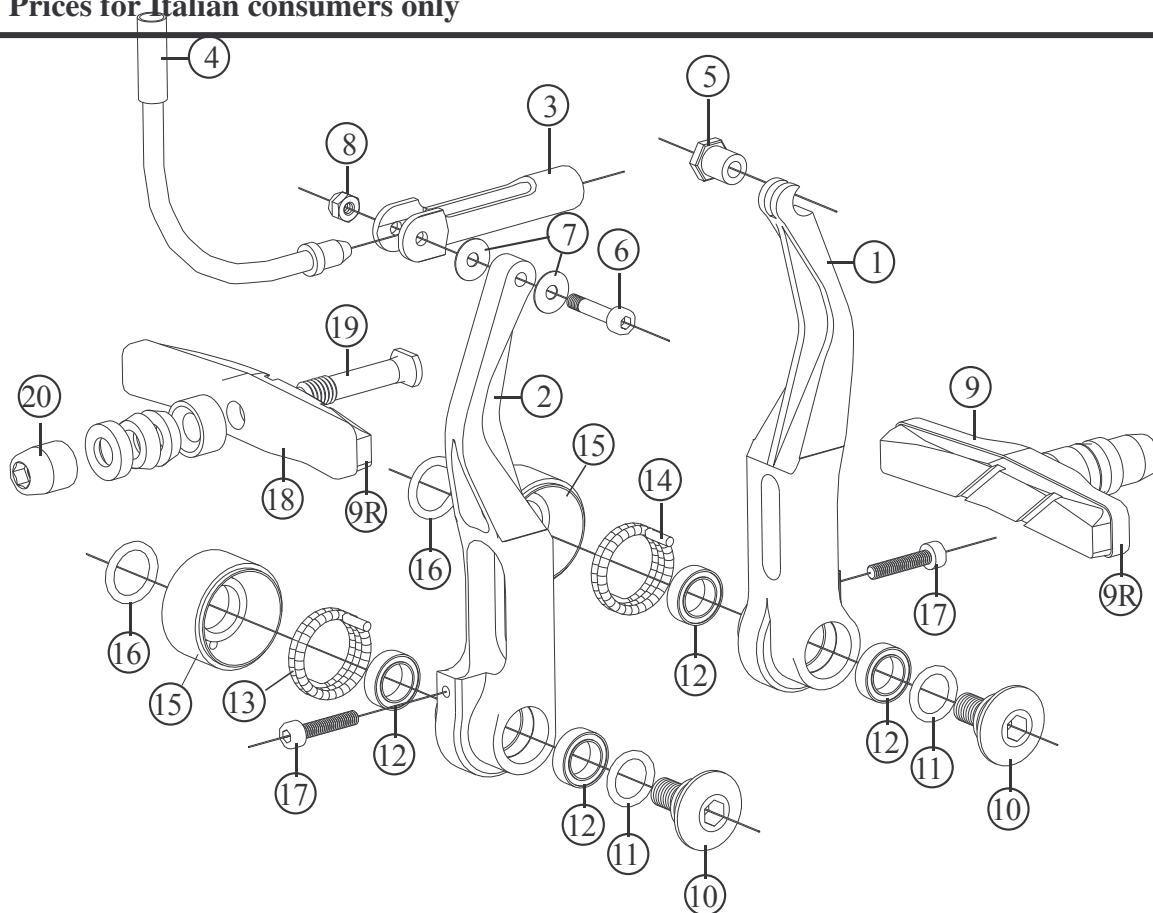
Specifications are subject to change without notice

# FRM

## V-Brakes for MTB

### DP4 - DP4 Ti.

**2007 Prices for Italian consumers only**



Item no.	Code	DESCRIPTION	Price Euro	INTERCHANGEABILITY	
				Direct Pull	Swing Link
1	VB01L	Left Arm – Black	30,00	X	X
1	VB01LG	Left Arm – Gold	30,00	X	X
2	VB01R	Right Arm - Black	30,00	X	X
2	VB01R	Right Arm - Gold	30,00	X	X
3	VB03	Inner Cable Lead Hook	8,00	A	X
4	VB04	Inner Cable Lead Unit (90°)	5,00	A	X
5	VB05	Cable fixing Nut and Dowell	2,00	A	A
6	VB06	Allen Bolt M3x16 mm	0,06	A	X
7	VB07	Plastic Washer	0,04	A	X
8	2040401	Self-locking Nut M3	0,03	A	X
9	955VC	Cartridge-Type Pad Holder with Multicondition pads & hardware. Set (pair)	10,50	X	X
9R	955VCR	Replacement Pads. Multicondition. Set (Pair)	4,00	X	X
10	VB08	Fixing Bolt (M6) / Light Alloy	2,50	X	X
11	OR108	O-Ring 108 (I.D. 8,73 x 1,78 mm)	-	X	X
12	VB12835	Bearing 12x8x3,5 ZZ	2,00	X	X
13	VB09CS	Clockwise Spring	0,80	X	X
14	VB09ACS	Anti-Clockwise spring	0,80	X	X
15	VB10	Spring Shield	1,30	X	X
16	OR2043	O-Ring 2043 (I.D. 10,82 x 1,78 mm)	-	X	X
17	TCC315	Spring Tension Adjustment Screw (Allen Bolt M3x15 mm)	0,06	B	B
19	DP4 Ti.-PHST	Pad Holder Stud in Titanium for DP4 Ti.	8,00	X	X
20	DP4 Ti.-PHN	Pad Holder Nut in Light Alloy (Gold anodized) for DP4 Ti.	2,00	X	X

**A:** Same parts

**B:** Parts are usable, but different in material, appearance, finish, size.

**X:** Non-interchangeable

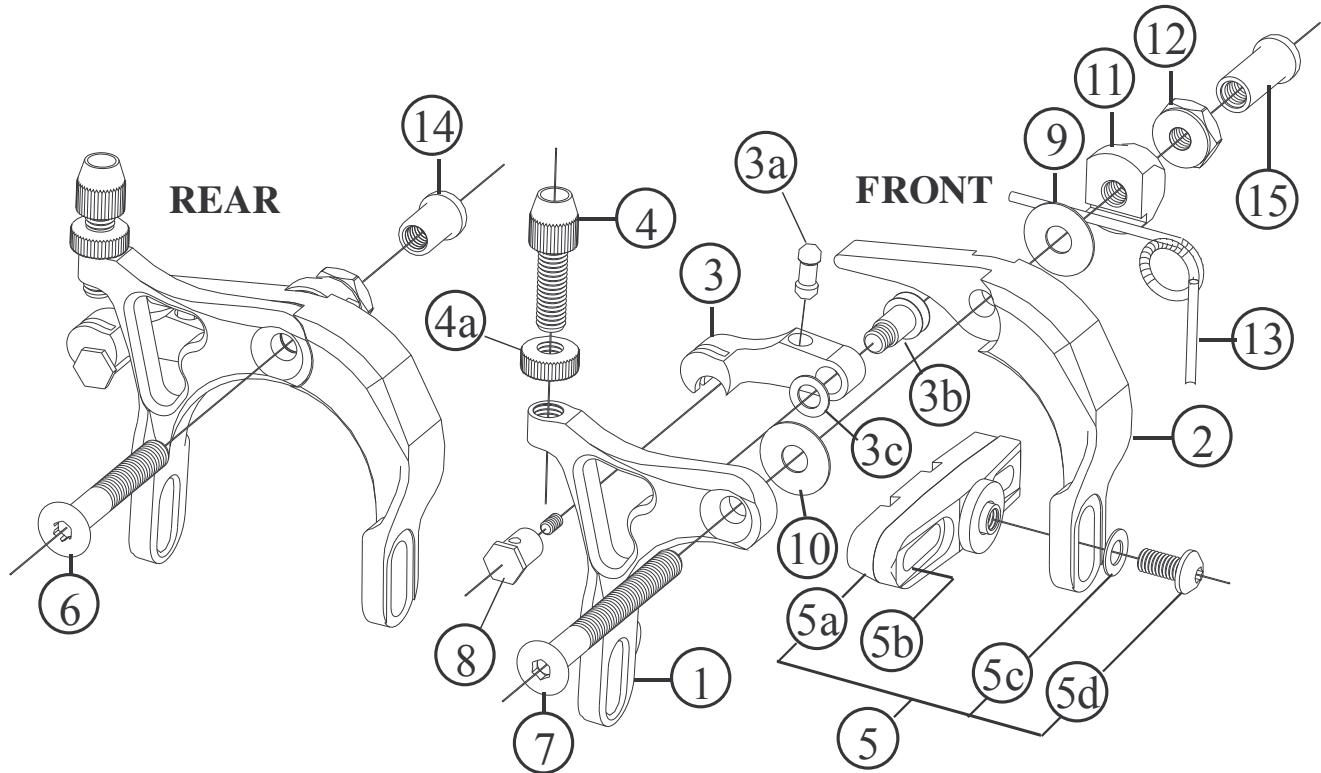
Specifications are subject to change without notice

# FRM

Brakes for Road

## CL2, CL2 Ti., **CL2 Team CALIPER - New**

2006 Prices for Italian consumers only



Item no.	Code	DESCRIPTION	Price Euro	INTERCHANGEABILITY	
				Caliper 2004	CL2 2005
1	CL2AF	A Arm (Front)	18,00	X	A
2	CL2BF	B Arm (Front)	18,00	X	A
3	CL2C	C Arm (Front)	12,60	X	A
3a	CL2CA	Push-Rod (Steel)	1,80	X	A
3b	CL2CB	C-Arm Pivot (Steel)	1,80	X	A
3c	CL2CC	Pivot Washer (9x6x0,5 mm)	0,30	X	A
4	CL201	Cable Adjusting Barrel (M6)	2,80	X	A
4a	CL202	Cable Adjusting Nut	1,60	X	A
5	CL2-PH	Pad Holder. Steel Hardware & Multicondition Pads	Set of 2 pcs 11,20	B	B
5	CL2-PH Ti.	Pad Holder. Alloy /Ti. Hardware & Swiss Stop Green Pads	Set of 2 pcs 33,40	B	B
5	<b>CL2-PH Team</b>	<b>Pad Holder. Carbon fibre body. Alloy/Ti. Hardware &amp; S.S.G. Pads</b>	<b>Set of 2 pcs 71,20</b>	B	B
5a	461	Multicondition 3 Stage Replacement Pads	Set of 2 pcs 3,40	B	B
5a	2006-04-04	Swiss Stop Green Replacement Pads	Set of 2 pcs 10,30	B	B
5a	2006-05-04	Corima Replacement Pads for Carbon Fibre Rims	Set of 2 pcs 13,00	B	A
5b	CL2A-PH	Cartridge Pad Holder in light Alloy	Set of 2 pcs 8,00	B	A
5c	SW	Steel Washer	0,05	A	A
5d	TCC510	Pad Holder Fixing Bolt in Steel (M5x10 mm)	0,10	B	A
5d	TCC510Ti.	Pad Holder Fixing Bolt in Titanium (M5x10 mm)	6,80	B	A
6	CL204	Rear Brake Axle in Steel (M6x40 mm)	5,00	X	A
6	CL204Ti.	Rear Brake Axle in Titanium (M6x40 mm)	11,00	X	A
7	CL205	Front Brake Axle in Steel (M6x55 mm)	6,50	X	A
7	CL205Ti.	Front Brake Axle in Titanium (M6x55 mm)	13,00	X	A
8	CL210	Cable Anchor Light Alloy)	3,60	X	A
9	WD016	Plastic Washer (16x6x0,6 mm)	0,50	X	A
10	WD0161	Plastic Washer (16x6x1 mm)	0,50	X	A
11	CL206	Spring Holder (Light Alloy)	2,50	A	A
12	CL207	Lock-Nut (Light Alloy)	1,10	X	A
13	CL2RS	Steel Spring	0,80	X	A
14	CL209	Rear Axle Lock-Nut (Short)	2,50	X	A
15	CL208	Front Axle Lock-Nut (Long)	2,50	X	A

**A: Same parts B: Parts are usable, but different in material, appearance, finish, size. X: Non-interchangeable**

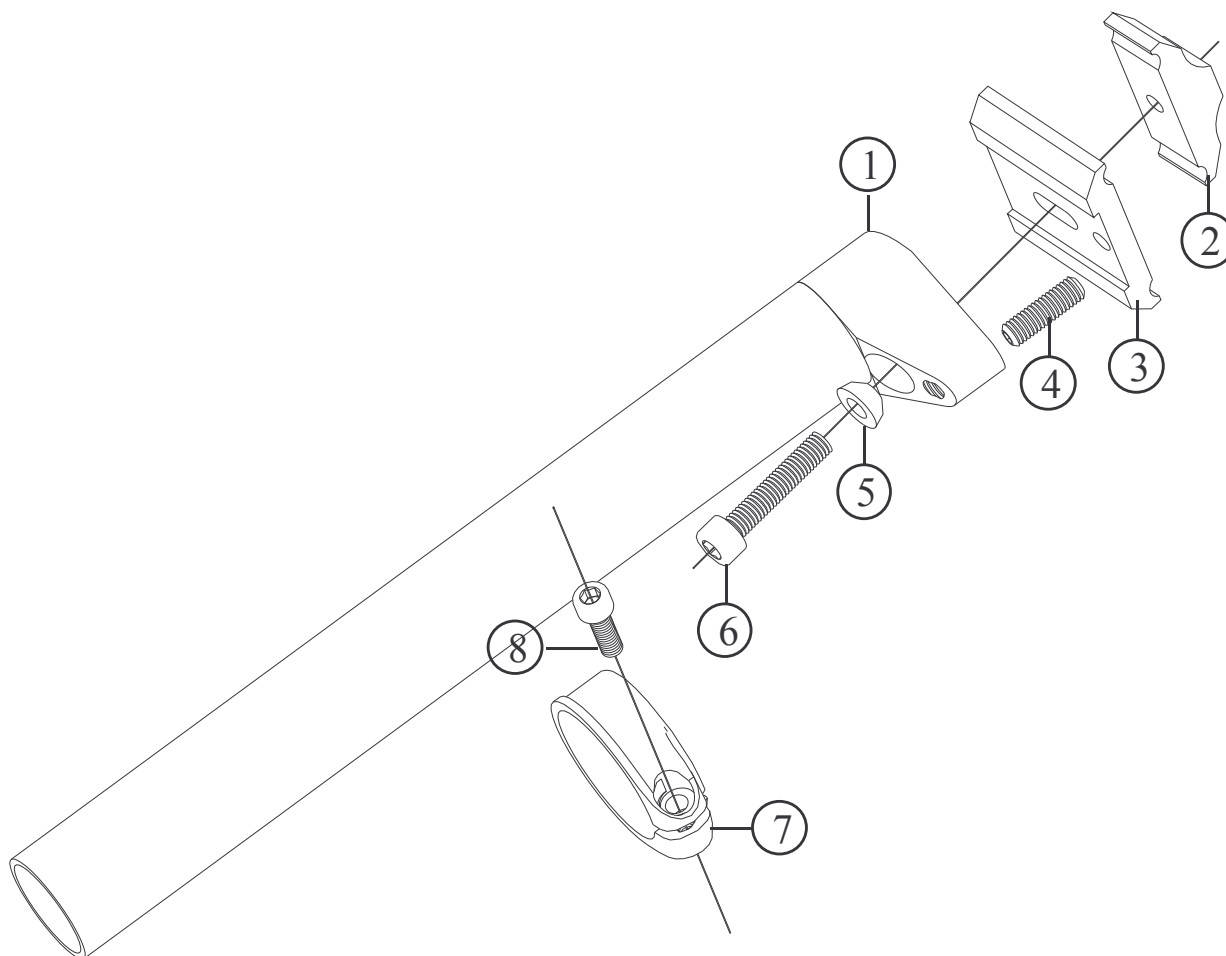
Specifications are subject to change without notice

# FRM

Seatpost for Road & MTB

**ST-R11 ST-R21 Carbon ST-R21 Carbon Ti.**  
**ST-M11 ST-M21 Carbon ST-M21 Carbon Ti.**

**2007 Prices for Italian consumers only**



Item no.	Code	DESCRIPTION	Price Euro	INTERCHANGEABILITY				
				ST-M10 ST-M20	ST-M11	ST-M21 Carbon	ST-R11	ST-R21 Carbon
1	STR111B	Light Alloy Post 27,2 x 250 mm (ST-R 11)	46,00	X	B	B	-	B
1	STR211B	Carbon Fibre Post 27,2 x 250 mm (ST-R21 Carbon)	80,00	X	B	B	B	-
1	STM111B	Light Alloy Post 27,2 x 350 mm (ST-M11)	53,00	X	-	B	B	B
1	STM211B	Carbon Fiber Post 27,2 x 350 mm (ST-M21 Carbon)	105,00	X	B	-	B	B
2	STOS03	Rails Clamp for M6 Steel Bolt (Silver anodised)	10,00	X	A	A	A	A
2	STOS03T	Rails Clamp for M7 Titanium Bolt (Black anodised)	10,00					
3	STOS02	Rails Platform / Light Alloy	13,00	X	A	A	A	A
4	STOS04	Dowel	0,10	X	A	A	A	A
5	STOS05	Half-Ball / Light Alloy for M6 Steel Bolt	1,00	X	A	A	A	A
6	TCC630	Allen Bolt M6x30 mm /Steel	0,35	X	A	A	A	A
6	TCC730T	Allen Bolt M7x30 mm in Titanium	13,00	X	B	B	B	B
7	STAC35B	SC35 Seat Clamp. 34,9 mm dia Black. With steel bolt	11,50					
7	STAC35G	SC35 Seat Clamp. 34,9 mm dia Gold W. With steel bolt	11,50					
8	TCC515S	Allen Bolt M5x15 / Steel	0,10					
8	TCC515T	Allen Bolt M5x15 / Titanium	6,10					

A: Same parts

B: Parts are usable, but different in material, appearance, finish, size.

X: Non-interchangeable

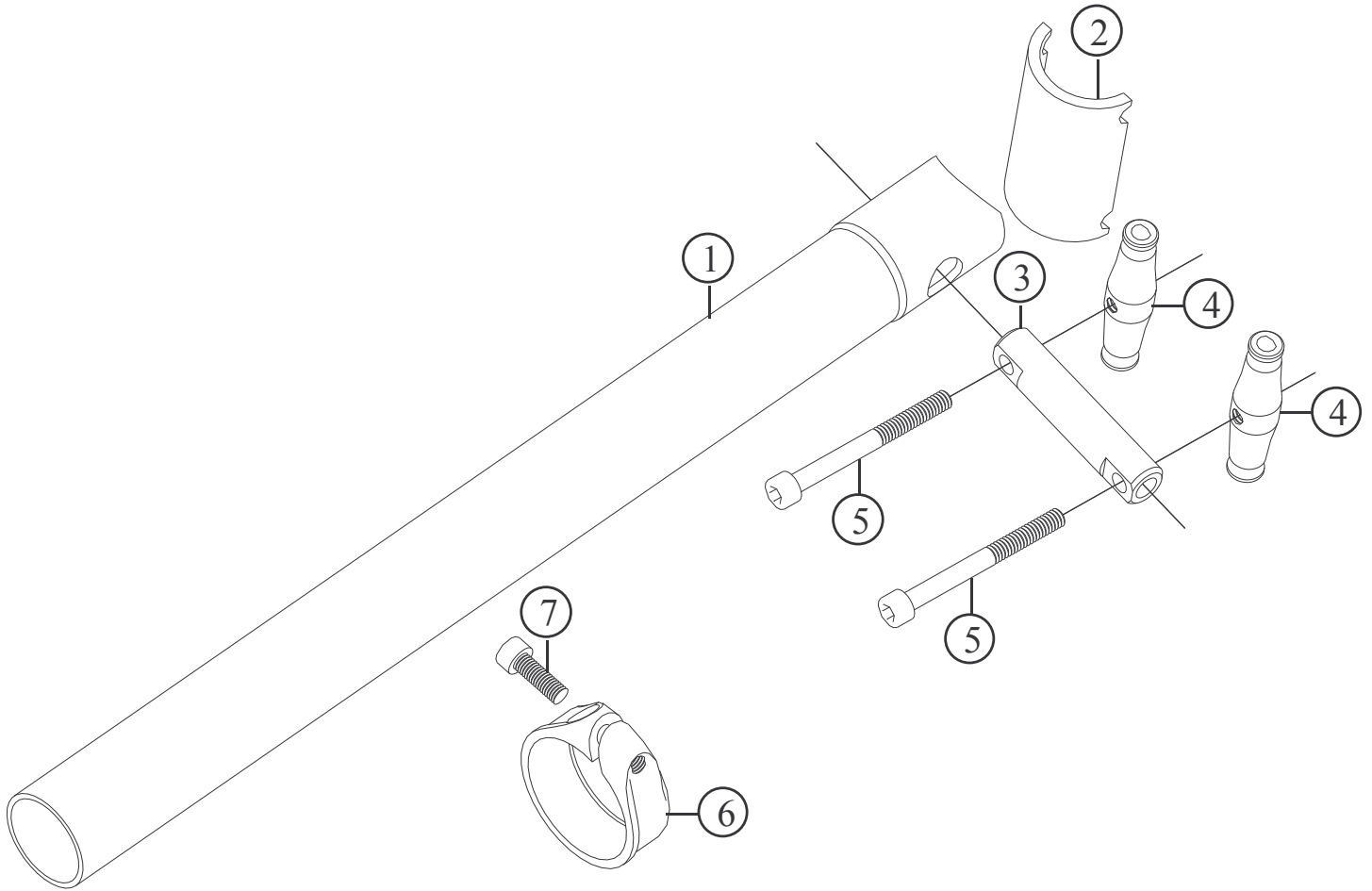
Specifications are subject to change without notice

# FRM

Seatpost for MTB

**ST-M10 ST-M10 Ti. ST-M20 Carbon ST-M20 Carbon Ti.**

**2007 Prices for Italian consumers only**



Item no.	Code	DESCRIPTION	Price Euro	INTERCHANGEABILITY			
				ST-M9	ST-M11	ST-R11	ST-R21
1	STM101B	Light Alloy Post 27,2 x 350 mm (ST-M10)	40,00	X	X	X	X
1	STM201B	Carbon Fiber Post 27,2 x 350 mm (ST-M20 Carbon)	92,00	X	X	X	X
2	STM102	Rails Cradle / Light Alloy	6,00	X	X	X	X
3	STM103	Pin for Steel Bolts	6,00	X	X	X	X
3	STM103T	Hollow pin for Titanium bolts. Black (ST-M20 Carbon Ti.)	6,50	X	X	X	X
4	STM104	Rail Clamp for M5 Steel Bolts	6,00	X	X	X	X
4	STM104T	Rail Clamp for M6 Titanium Bolts. Black (ST-M20 C. Ti.)	6,00	X	X	X	X
5	TCC550	Allen Bolt M5x50 mm in Steel	0,35	X	X	X	X
5	TCC558T	Allen bolt M6x50 mm in Titanium (ST-M20 Carbon Ti.)	13,00	X	X	X	X
6	STAC35B	SC35 Seat Clamp. 34,9 mm dia Black. With steel bolt	11,50				
6	STAC35G	SC35 Seat Clamp. 34,9 mm dia Gold W. With steel bolt	11,50				
7	TCC515S	Allen Bolt M5x15 / Steel	0,20				
7	TCC515T	Allen Bolt M5x15 / Titanium	6,10				

A: Same parts

B: Parts are usable, but different in material, appearance, finish, size.

X: Non-interchangeable

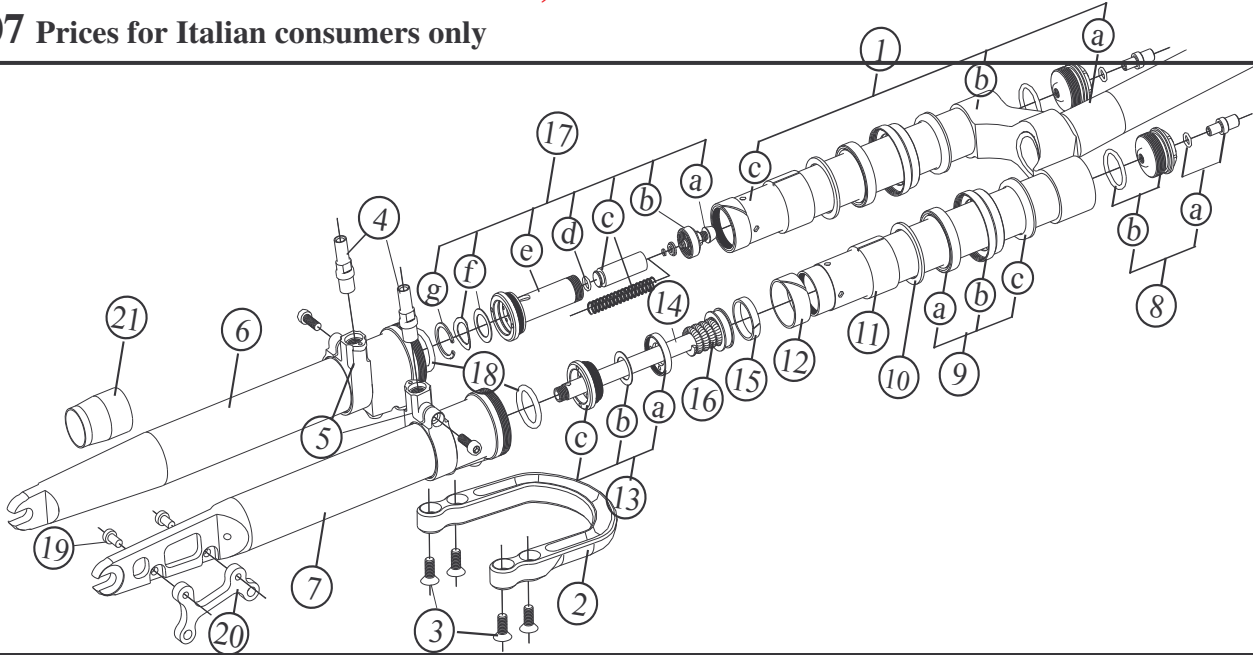
Specifications are subject to change without notice

# FRM

## Suspension Fork

### AIR-WAY 85 SSV CARBON, BICARBON and BICARBON Ti. - NEW

2007 Prices for Italian consumers only



Item no.	Code	DESCRIPTION	Price Euro	INTERCHANGEABILITY				
				Air-Way 110 SSV	Air-Way 83 RB	Air-Way 83 FullCar.	Air-Way 100	Air-Way 120 -125
1	06E30	Crown Assembly / Light Alloy Steerer Tube (85 SSV Carbon)	231,00	X	A-B	B	X	X
1	06CE30	Crown Assembly / Carbon Fibre Steerer Tube (85 SSV BiCarbon)	308,00	X	B	A	X	X
2	03RB	Reversed Brace / Light Alloy	68,00	X	A	X	X	X
3	04	Brace Fixing Bolt / Cone Head M6x14 mm / Steel	0,25	A	A	X	A	A
3	04T	Brace Fixing Bolt / Cone Head M6x14 mm / Titanium laser etched	10,30	A	A	X	A	A
4	05S	Brake Stud / Light Alloy M10x8 mm (V-Brake model only)	4,00	X	A	X	X	X
5	05C	Right Hand or Left Hand V-Brake Replaceable Collars	10,00	X	A	X	X	X
6	01RBC30	Right Lower Leg / Carbon Fibre	151,00	X	X	X	X	X
7	02RBC30	Left Lower Leg / Carbon Fibre	174,00	X	X	X	X	X
8	21A30	Air Valve Assembly	10,30	A	A	A	A	A
8a	21D	Air Valve & O-Ring 2025 (I.D. 6,07x1,78 mm)	4,10	A	A	A	A	A
8b	21B30	Air Valve Body & O-Ring 128 (I.D. 20,63x 1,78 mm)	4,10	A	A	A	A	A
9	AW30SA	Seals Assembly	13,00	A	B	B	X	X
9b	1730	Oil Seal Lock Ring / Light Alloy	5,00	A	B	B	X	X
9a	16N	Oil Seal 30x40x7 mm TTO	5,00	A	X	X	X	X
9c	SA30	Dust Seal	3,00	A	X	X	X	X
10	15N	Shim / Light Alloy 37,5x30x2 mm	1,50	A	A	A	X	X
11	14N	Upper Bushing / Iglodur W300 34x30x20 mm	6,50	A	A	A	X	X
12	13N	Lower Bushing / Polyzene 31,75x29,1x12 mm	4,00	A	A	A	A	A
13	07SP	Oil Valve Assembly	7,20	A	A	A	A	A
13a	07SPA	Oil Valve Cap	1,50	A	A	A	A	A
13b	07SPB	Oil Valve Shim—Steel 21,8x14,8x0,3mm	0,20	A	A	A	A	A
13c	07SPC	Oil Valve Body / Synthetic	5,50	A	A	A	A	A
14	08SP	Piston/Shaft/Spring Assembly / Light Alloy	16,00	X	X	X	X	X
15	11SP	Piston Seal FG 15049 4,9x1,5 mm	0,50	A	A	A	A	A
16	09SP	Negative – Top-Out Spring—Green 18,4 x 25 mm	3,00	A	A	A	X	A
17	SSV	SSV Valve Assembly	15,00	A	X	X	X	X
17a	SSVA	Bolt in Light Alloy with Spring Plate and Circlip	3,00	A	X	X	X	X
17b	SSVB	SSV Valve Cap—Synthetic	1,50	A	X	X	X	X
17c	SSVC	SSV Piston and Spring dia. 8,6x50 mm	3,50	A	X	X	X	X
17d	SSVD	O-Ring 2031	-	A	X	X	X	X
17e	SSVE	SSV Body	6,40	A	X	X	X	X
17f	SSVF	Steel Shims 21,8x14,8x0,3 mm (One flat – One bent)	0,50	A	X	X	X	X
17g	SSVG	Seeger 22V1	0,10	A	X	X	X	X
18	10A	Bottom-Out Damper / O-Ring	1,00	A	A	A	A	A
19	24A	Disc Mount Fixing Bolt / Allen M5 x10 mm	0,15	A	A	A	A	A
20	24	Disc Brake Mount / Light Alloy	18,60	X	A	A	X	X
21	OST30	Oil Seal Tool for 30 mm stanchions	4,00	A	A	A	X	X
		Motul Fork Oil Factory Line – Light 5W 200 cc	13,00	A	A	A	A	A
		Motul Fork Oil Factory Line – Light 5W 1.000 cc	30,00	A	A	A	A	A

A: Same parts B: Parts are usable, but different in material, appearance, finish, size, etc. X: Non-interchangeable

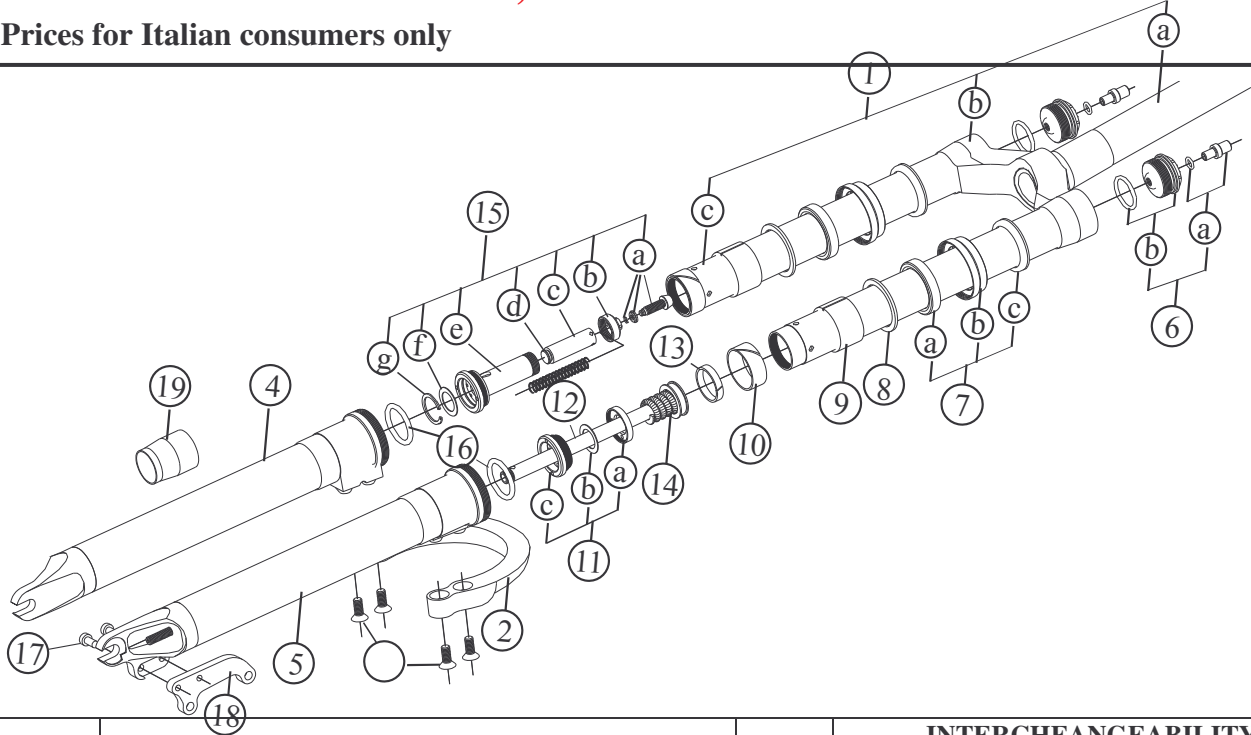
Specifications are subject to change without notice

# FRM

## Suspension Fork

### AIR-WAY 110 SSV CARBON, BICARBON and BICARBON Ti. - NEW

2007 Prices for Italian consumers only



Item no.	Code	DESCRIPTION	Price Euro	INTERCHANGEABILITY				
				Air-Way 85 SSV	Air-Way 83 RB	Air-Way 83 FullCar.	Air-Way 100	Air-Way 120-125
1	06N30	Crown Assembly / Light Alloy Steerer Tube (110 SSV Carbon)	270,00	X	A-B	B	X	X
1	06CN30	Crown Assembly / Carbon Fibre Steerer Tube (110 SSV BiCarbon)	351,00	X	B	A	X	X
2	03N06	Reversed Brace / Light Alloy (revised and lighter)	68,00	X	A	X	X	X
3	04	Brace Fixing Bolt / Cone Head M6x14 mm / Steel	0,25	A	A	X	A	A
3	04T	Brace Fixing Bolt / Cone Head M6x14 mm / Titanium laser etched	9,50	A	A	X	A	A
4	01CN07	Right Lower Leg / Carbon Fibre	185,00	X	X	X	X	X
5	02CN07	Left Lower Leg / Carbon Fibre	221,00	X	X	X	X	X
6	21A30	Air Valve Assembly	10,30	A	A	A	A	A
6a	21D	Air Valve & O-Ring 2025 (I.D. 6,07x1,78 mm)	4,10	A	A	A	A	A
6b	21B30	Air Valve Body & O-Ring 128 (I.D. 20,63x 1,78 mm)	4,10	A	A	A	A	A
7	AW30SA	Seals Assembly	13,00	A	B	B	X	X
7b	1730	Oil Seal Lock Ring / Light Alloy	5,00	A	B	B	X	X
7a	16N	Oil Seal 30x40x7 mm TTO	5,00	A	X	X	X	X
7c	SA30	Dust Seal	3,00	A	X	X	X	X
8	15N	Shim / Light Alloy 37,5x30x2 mm	1,50	A	A	A	X	X
9	14N	Upper Bushing / Iglodur W300 34x30x20 mm	6,50	A	A	A	X	X
10	13N	Lower Bushing / Polyzene 31,75x29,1x12 mm	4,00	A	A	A	A	A
11	07SP	Oil Valve Assembly	7,20	A	A	A	A	A
11a	07SPA	Oil Valve Cap	1,50	A	A	A	A	A
11b	07SPB	Oil Valve Shim—Steel 21,8x14,8x0,3mm	0,20	A	A	A	A	A
11c	07SPC	Oil Valve Body / Synthetic	5,50	A	A	A	A	A
12	08NSP	Piston/Shaft/Spring Assembly / Light Alloy	17,00	X	X	X	X	X
12	11SP	Piston Seal FG 15049 4,9x1,5 mm	0,50	A	A	A	A	A
14	09SP	Negative – Top-Out Spring—Green 18,4 x 25 mm	3,00	A	A	A	X	A
15	SSV	SSV Valve Assembly	15,00	A	X	X	X	X
15a	SSVA	Bolt in Light Alloy with Spring Plate and Circlip	3,00	A	X	X	X	X
15b	SSVB	SSV Valve Cap—Synthetic	1,50	A	X	X	X	X
15c	SSVC	SSV Piston and Spring dia. 8,6x50 mm	3,50	A	X	X	X	X
15d	SSVD	O-Ring 2031	-	A	X	X	X	X
15e	SSVE	SSV Body	6,40	A	X	X	X	X
15f	SSVF	Steel Shims 21,8x14,8x0,3 mm (One flat – One bent)	0,50	A	X	X	X	X
15g	SSVG	Seeger 22V1	0,10	A	X	X	X	X
16	10A	Bottom-Out Damper / O-Ring	1,00	A	A	A	A	A
17	24A	Disc Mount Fixing Bolt / Allen M5 x10 mm	0,15	A	A	A	A	A
18	24N	Disc Brake Mount / Light Alloy	18,60	X	A	A	X	X
19	OST30	Oil Seal Tool for 30 mm stanchions	4,00	A	A	A	X	X
		Motul Fork Oil Factory Line – Light 5W 200 cc	13,00	A	A	A	A	A
		Motul Fork Oil Factory Line – Light 5W 1.000 cc	30,00	A	A	A	A	A

A: Same parts B: Parts are usable, but different in material, appearance, finish, size, etc. X: Non-interchangeable

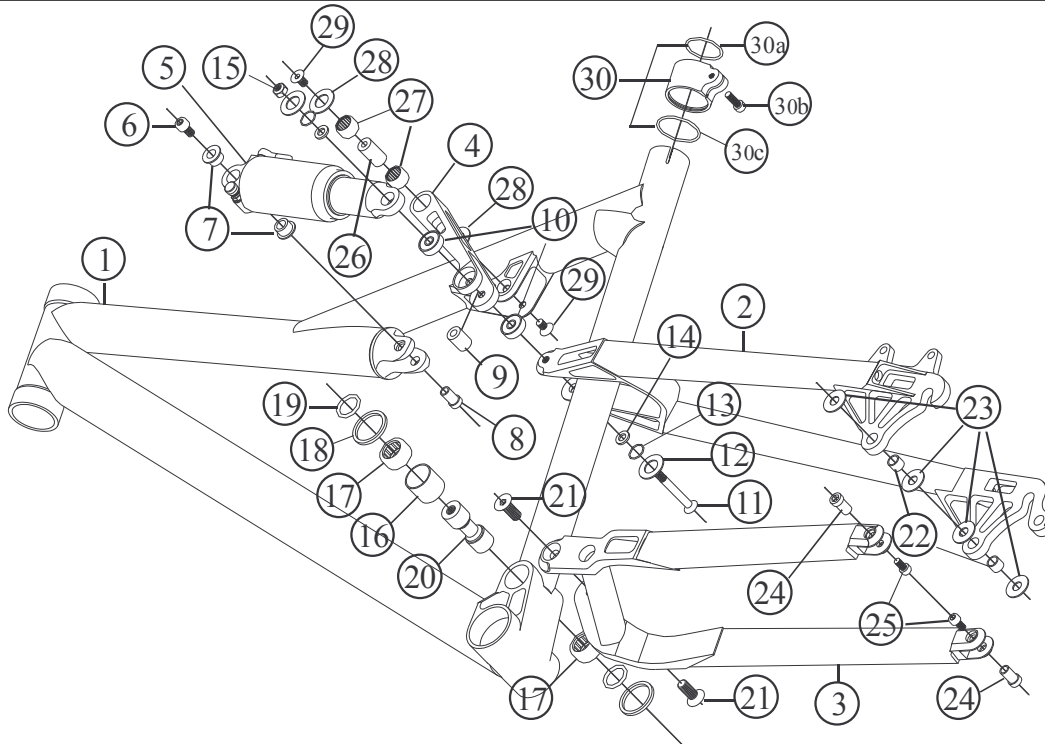
Specifications are subject to change without notice

# FRM

## Suspension Frame

### 12 HP - Modified

**2007 Prices for Italian consumers only**



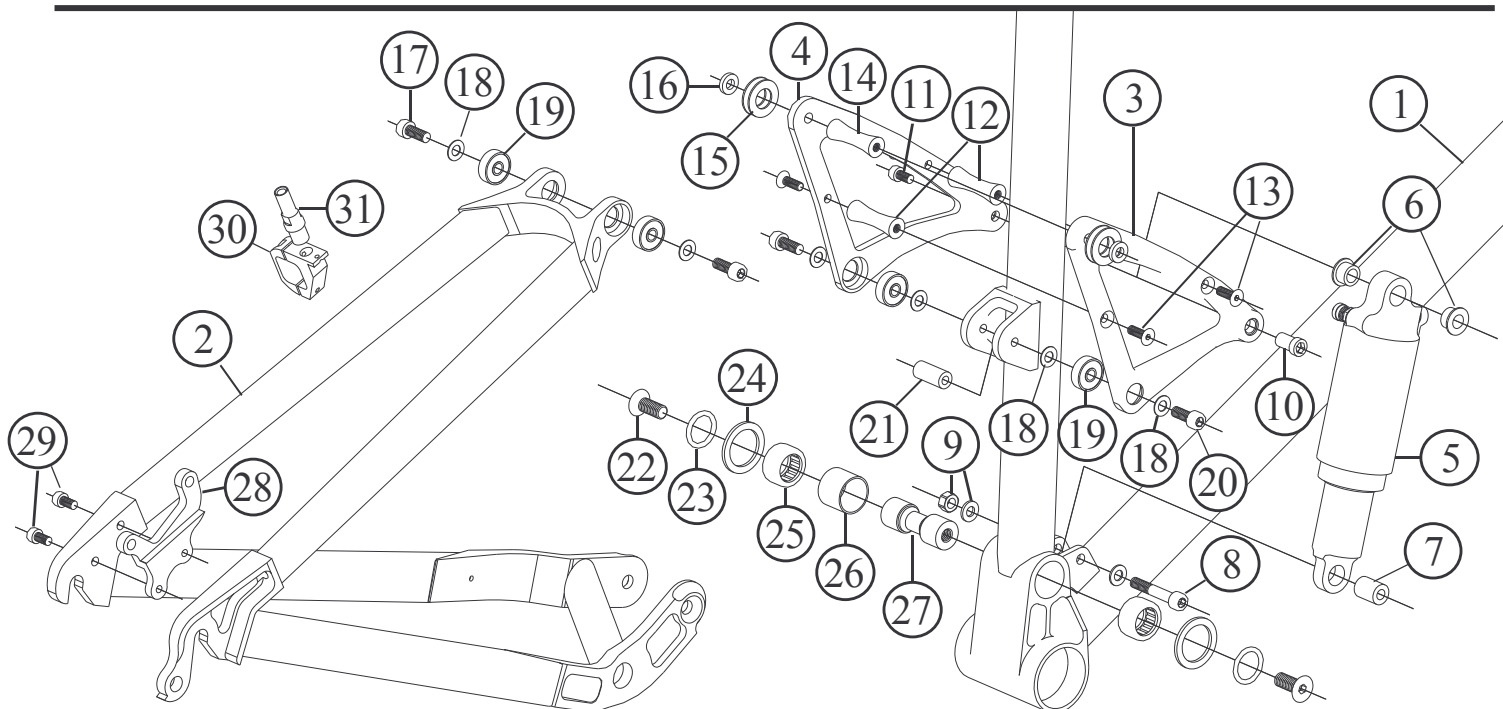
Item no.	Code	DESCRIPTION	Price Euro	INTERCHANGEABILITY		
				Be Active Plus	10HP	Be Mad
1	12HPMF06	Main Frame Black anodised (17,5" – 19" – 20,5")	600,00	X	X	X
2	SSBAP03	Seat-Stay Assembly: modified with beafier tubes	200,00	A	X	X
3	CSBAP03	Chain-Stay Assembly	200,00	A	X	X
4	12HPSL06	Swing Link (Gold anodised)	29,00	X	X	X
5	XFO2P165	Rear Shock Rock Shox MC3,3 Stable Platform+Lockable (165 mm eye to eye)	250,00	A	A	X
5	HRV200S	Rear Shock DT HRV200 Stable Platform (165 mm eye to eye)	450,00	A	A	X
6	TCE610	Allen Bolt M6 x 10 mm	0,14	X	A	X
7	UESBAXF	Spacer of Shock Upper Eye (2 pcs) Specify Shock Type	1,00 pc	A	A	X
8	HLP03	Axle of the Shock Upper Eye (Light Alloy)	2,14	X	A	X
9	LEAXF	Axle of Shock Lower Eye. Specify Shock type	1,00	A	A	A
10	BB1966	Ball Bearing 19x6x62RS (2 pcs)	2,50 pc	X	A	X
11	TSE650	Cone-Headed Bolt M6x50 mm (Non Commercial - Special Design)	6,30	X	X	X
12	WD022	Plastic Washer dia. 22 mm (2 pcs)	0,56 pc	A	A	X
13	OR12085	O-Ring 11,7x0,85 (2pcs)	0,10 pc	X	X	X
14	SW1215	Steel Washer 12x1,5 mm (6pcs)	0,05 pc	X	A	X
15	SNM6	Self-Locking nut M6	0,09	A	A	A
16	MPRS	Bearings Spacer	1,00	A	A	A
17	MPR96	Main Pivot Needle Bearing (2pcs)	6,50 pc	A	A	A
18	WD030	Plastic Washer dia. 30 mm (2pcs)	0,75 pc	A	A	A
19	ORD22	O-Ring dia. 22 mm (2pcs)	0,14 pc	A	A	A
20	MPA97	Main Pivot Axle (Light Alloy with Steel Sleeves)	9,70	A	A	A
21	TSE820	Cone-Headed Bolt M8x20 (2 pcs)	0,23 pc	A	A	A
22	HLB96	DU Horst Link Bushing (2 pcs)	0,61 pc	A	X	A
23	WD018	Plastic Washer dia. 18 mm (4 pcs)	0,52 pc	A	X	A
24	HLP96	Horst Link Axle (2pcs)	2,14 pc	A	X	X
25	TCE610	Allen Bolt M6x10 (2 pcs)	0,14 pc	A	X	X
26	RAA96	Rocker Arm Axle (hardened steel )	3,50 pc	A	X	X
27	RAR96	Bocker Arm Needle Bearing (2pcs)	4,80 pc	A	X	X
28	WD022	Plastic Washer dia. 22 mm (2pcs)	0,56 pc	A	X	X
29	TSE610	Cone-Headed Bolt M6x10 mm (2 pcs)	0,14 pc	A	X	X
30	SSC	Sealed Seatpost Clamp	17,50	A	A	X
30a	ORSSC1	O-Ring 2106 26,07x1,78	0,14	A	A	X
30b	ORSSC2	O-Ring 2125 31,47x1,78	0,15	A	A	X
30c	TCE515	Allen Bolt M5x15	0,10	A	A	X

**A: Same parts B: Parts are usable, but different in material, appearance, finish, size, etc. X: Non-interchangeable**

Specifications are subject to change without notice

# FRM 10HP

2007 Prices for Italian consumers only



Item no.	Code	DESCRIPTION	Price Euro	INTERCHANGEABILITY		
				12HP	Be Active Plus	Be Mad 2004-2005
1	HPMF03	Main Frame Titan anodised (17,5" – 19" – 20,5")	590,00	X	X	X
2	HPS03	One-Piece Suspension	400,00	X	X	X
3	HPRAR04	Rocker Arm Right Plate (Black Anodised)	21,80	X	X	X
4	HPRAL04	Rocker Arm Left Plate (Black Anodised)	21,80	X	X	X
5	XFO2P165	Rear Shock Rock Shox MC3,3 Stable Platform+Lockable (165 mm eye to eye)	250,00	A	A	X
5	HRV200S	Rear Shock DT HRV200 Stable Platform (165 mm eye to eye)	450,00	A	A	X
6	UES10HP	Spacer of the Shock Upper Eye (2 pcs) Specify shock type	1,50	A	A	X
7	LEAXF	Axle of Shock Lower Eye – Specify shock type	1,00	A	A	A
8	TCE635	Allen Bolt M6 x 35 & Washer	0,27	X	B	B
8	TCE635Ti.	OPTIONAL: Allen Bolt M6 x 35 Titanium	8,50	X	A	A
9	SNM6E	OPTIONAL: Self-Locking Nut M6 Light Alloy	0,90	B	B	B
9	SNM6	Self-Locking nut M6 & Washer	0,09	A	A	A
10	HLP03	Axle of the Shock Upper Eye (Light Alloy)	2,14	A	B	X
11	TCE610	Allen Bolt M6x10	0,14	A	A	X
11	TCE610E	OPTIONAL: Allen Bolt M6x10 Light Alloy	1,50	B	A	X
12	HPRS5	Fuse-Shaped Spacer M5 (2pcs)	3,40 pc	X	X	A
13	TSE515	Cone-Headed Bolt M5x15 (4 pcs)	0,14 pc	X	X	A
14	HPRS6	Fuse-Shaped Spacer M6	3,40	X	X	X
15	WD022	Plastic Washer dia. 22 mm (4 pcs)	0,56 pc	A	A	A
16	BW1245	Brass Washer 12x4,5 mm (2pcs)	0,50 pc	X	X	X
17	TCE625	Allen Bolt M6x25 (2pcs)	0,22 pc	X	X	X
17	TCE625Ti.	OPTIONAL: Allen Bolt M6x25 Titanium (2pcs)	8,50 pc	X	X	X
18	SW1215	Steel Washer 12x1,5 mm (6pcs)	0,05 pc	A	X	A
19	BB1966	Ball Bearing 19x6x62RS (4pcs)	2,50 pc	A	X	A
20	TCE620	Allen Bolt M6x20 (2pcs)	0,20 pc	X	X	B
20	TCE620Ti.	OPTIONAL: Allen Bolt M6x20 Titanium (2pcs)	7,50 pc	X	X	A
21	HPRAS6	Light Alloy Rod M6	3,00	X	X	X
22	TSE820	Cone-Headed Bolt M8x20 (2 pcs)	0,23 pc	A	B	B
22	TSE820Ti.	OPTIONAL: Cone-Headed Bolt M8x20 Titanium (2 pcs) Laser Etched	12,10 pc	B	A	A
23	ORD22	O-Ring dia. 22 mm (2pcs)	0,14 pc	A	A	A
24	WD030	Plastic Washer dia. 30 mm (2pcs)	0,75 pc	A	A	A
25	MPR96	Main Pivot Needle Bearing (2pcs)	6,50 pc	A	A	A
26	MPRS	Bearings Spacer	1,00	A	A	A
27	MPA97	Main Pivot Axle (Light alloy with steel sleeves)	9,70	A	A	A
28	DISC96	Disc Brake Adaptor	18,90	X	A	A
29	TCE512	Allen Bolt M5 x12 mm (2pcs)	0,10 pc	X	A	A
30	CB99	V-Brake Collar (2pcs)	12,90 pc	A	A	X
31	ACS96	Brake stud M8	4,00	A	A	X

A: Same parts B: Parts are usable, but different in material, appearance, finish, size, etc. X: Non-interchangeable

# *FRM*

**Manufactured and distributed by:**

**The Bike Shop**

**Via Mattei 18/a**

**48025 Riolo Terme (RA)**

**Italy**

**tel. +39 0546 70310**

**fax +39 0546 74623**

**e-mail: [info@frmbike.com](mailto:info@frmbike.com)**

**[www.frmbike.com](http://www.frmbike.com)**