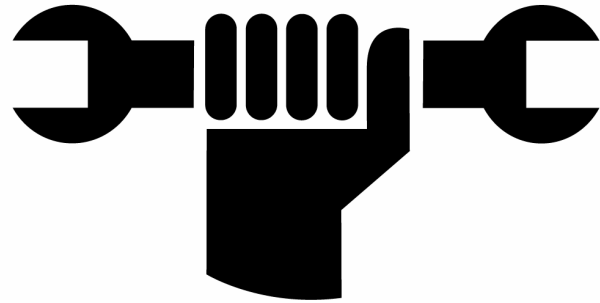


FRM



2006

SPARE PART

MANUAL

&

PRICE LIST

INDEX

CRANKSETS

CU2-R 110 Integral Drive (Road) Page 3 Modif
CU2-M TR Integral Drive (MTB) Page 4 Modif
CU2-M 2x9 Integral Drive (MTB) Page 5 Modif

BOTTOM BRACKET

CU2-BB ISIS AL (Road) Page 6 Modif.

FRONT HUBS

FL-R Pro (Road)& FL-M Pro (MTB) Page 7 Modif
FL-R Team & Team CA (Road) Page 8 Modif.
FL-M Team (MTB) Page 9 New
FL-M Pro Disc (MTB) Page 10 Modif
FL-M Team Disc (MTB) Page 11 New
SP-R Team (Road) See 2005 Manual

REAR HUBS

FL-R Pro (road) & FL-M Pro (MTB) Page 12 Modif.
FL-R Team & Team CA (Road) Page 13 Modif.
FL-M Pro Disc (MTB) Page 14 Modif
FL-M Team (MTB) Page 15 New
FL-M Team Disc (MTB) Page 16 New
SP-R Team (Road) See 2005 Manual

QUICK RELEASE

FRM Pro–FRM Team See 2005 Manual

ROAD WHEELSET

REAR FL-R23 Aerolite Carbon (R.) Page 17 New
FRONT FL-R23 Aerolite Carbon (R) Page 18 New
REAR FL-R21 Aerolite (Road) Page 19 Modif
FRONT FL-R21 Aerolite (Road) Page 20 Modif
REAR SP-R21 (Road) Page 21
FRONT SP-R21 (Road) Page 22
REAR FL-R12 (Road) Page 23 Modif
FRONT FL-R12 (Road) Page 24 Modif

HEADSET

C-SET & C-SET Team 1 1/8” Page 25 Modif.
C-SET OS 1 1/8” See 2005 Manual
A-SET 1 1/8” See 2005 Manual

STEMS

WEB-STEM CF & WEB-STEM 32 Page 26 New

SEATPOSTS

ST-M10, ST-M20 Carbon & Ti. See 2005 Manual
ST-M11, ST-M21 Carbon & Ti See 2005 Manual
ST-R11, ST-R21 Carbon & Ti. See 2005 Manual

BRAKE LEVERS

DP4 & DP4 SL (MTB) Page 27 Modif.

BRAKES

DP4 & DP4 Ti. (MTB) Page 28 Modif.
CL2 & CL2 Ti.(Road) Page 29 Modif.

DISC ROTORS

UNIROTOR PRO & TEAM Page 30 New

SUSPENSION FORKS

AIR-WAY 90 Carbon /Bicarbon / Ti. Page 31 Modif.
AIR-WAY 100 / Carbon / Bicarbon See 2005 Manual
AIR-WAY 125 /Carbon See 2005 Manual

SUSPENSION FRAMES

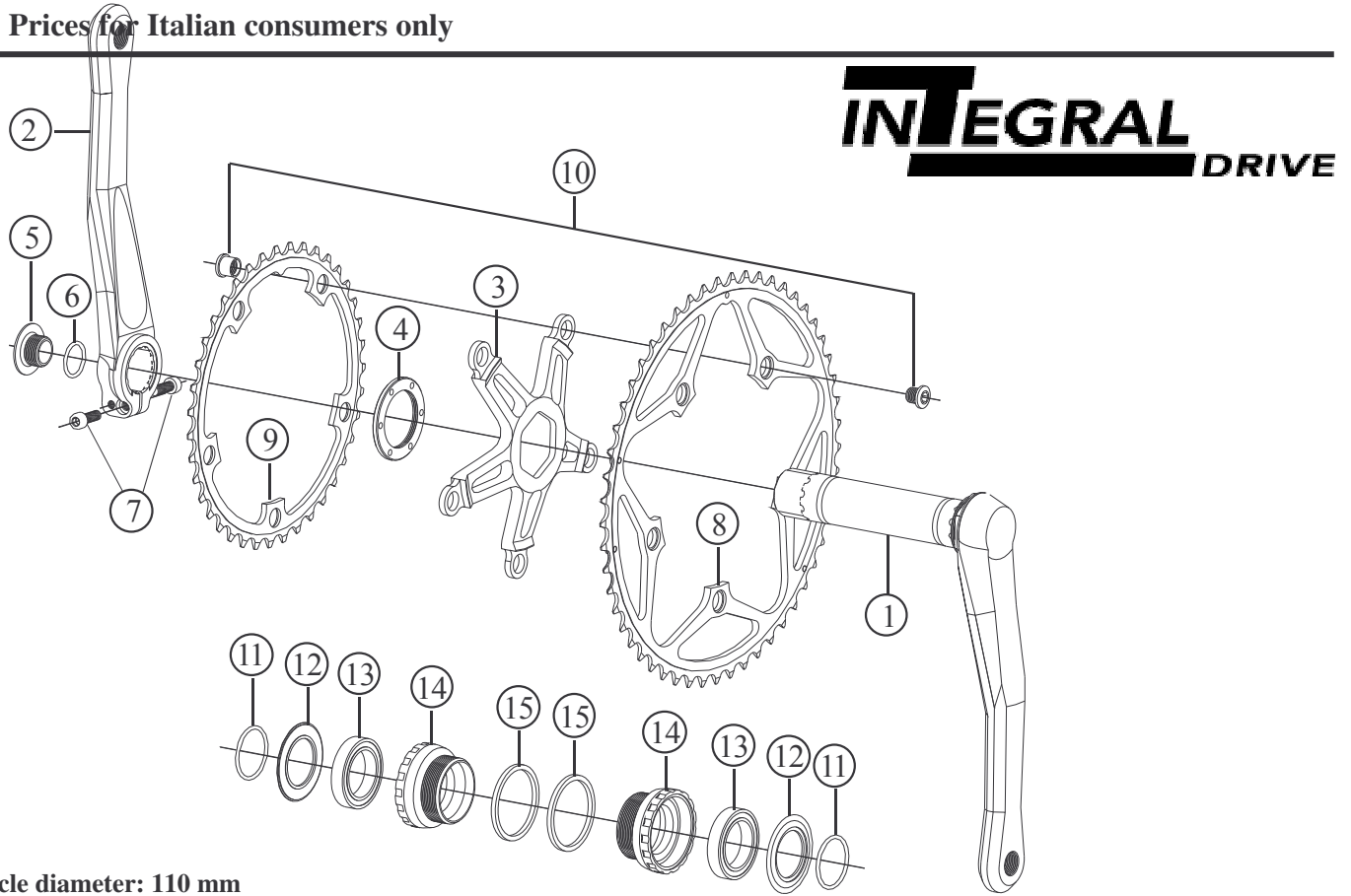
12HP Page 32 New
10HP Page 33 Modif

FRM

Front Crankset for Road

CU2-R110 & **R110 Ti**. INTEGRAL DRIVE -Modified

2006 Prices for Italian consumers only



Bolt circle diameter: 110 mm

Item no.	Code	DESCRIPTION	Price Euro	INTERCHANGEABILITY			
				CU2-R 130 ISIS	CU2-R 110 ISIS	CU2-M TR Integral	CU2-R 130 Integral
1	CU16R	Integral Right Arm with Axle (L.116,5 mm) 170-172,5-175 mm - Black	155,00	X	X	X	A
2	CU16L	Clamp Type Left Arm 170-172,5-175 mm - Black	105,00	X	X	X	A
3	CU27R	5 Arm spider (110 mm B.D.C.) Black or Gold Works	80,00	X	X	B	B
4	CU006	Spider Lock Ring	4,80	A	A	A	A
5	CU18	Bolt for Play Adjustment	2,50	X	X	A	A
6	OR2056	O-Ring 2056 (I.D. 14 x 1,78 mm)	-	X	X	A	A
7	TCC515/512S	1 Allen Bolt M5x15 and 1 Allen bolt M5x12 / Steel	0,20	X	X	A	A
7	TCC515Ti TCC512Ti	1 Allen Bolt M5x15 and 1 Allen bolt M5x12 / Titanium	5,70 5,70	X	X	A	A
8	CU1753110	Chain Ring FRM Pro 50T (110 mm B.C.D.)	53,90	X	A	X	X
	CU21739110	Chain Ring FRM Pro 39T (110 mm B.C.D.)	24,80	X	A	X	X
8	CU17500	Chain Ring FRM Pro 50T (110 mm B.C.D.)	53,90	X	A	X	X
9	CU1736I	Chain Ring FRM Pro 36T (110 mm B.C.D.)	24,80	X	A	X	X
9	CU1734I	Chain Ring FRM Pro 34T (110 mm B.C.D.)	24,80	X	A	X	X
10	CU004	Chainring Fixing Bolt & Nut Black (each)	2,40	A	A	A	A
10	CU004G	Chainring Fixing Bolt & Nut Gold (each)	2,50	A	A	A	A
11	OR2093	O-Ring 2093 (I.D. 23,52 x 1,78 mm)	-	X	X	A	A
12	CU19	Dust Shield (plastic)	2,00	X	X	A	A
13	BB37257	Bearing 6805 2RS 37x25x7 mm	11,00	X	X	A	A
14	CU20R CU20L	Right hand Cup (BC 1,37x24T) English Thread / Shell Width 68 mm Left hand Cup (BC 1,37x24T) English Thread / Shell Width 68 mm	13,70	X X	X X	A A	A A
14	CU21	Right & Left hand Cup (M36x24T) Italian Thread / Shell Width 70 mm	13,70	X	X	A	A
15	CU22	Spacer 2,5 mm thick. DO NOT USE WITH ITALIAN 70mm BB SHELLS	1,00	X	X	A	A

Note: Modified parts from model 2005

A: Same parts

B: Parts are usable, but different in material, appearance, finish, size.

X: Non-interchangeable

Specifications are subject to change without notice

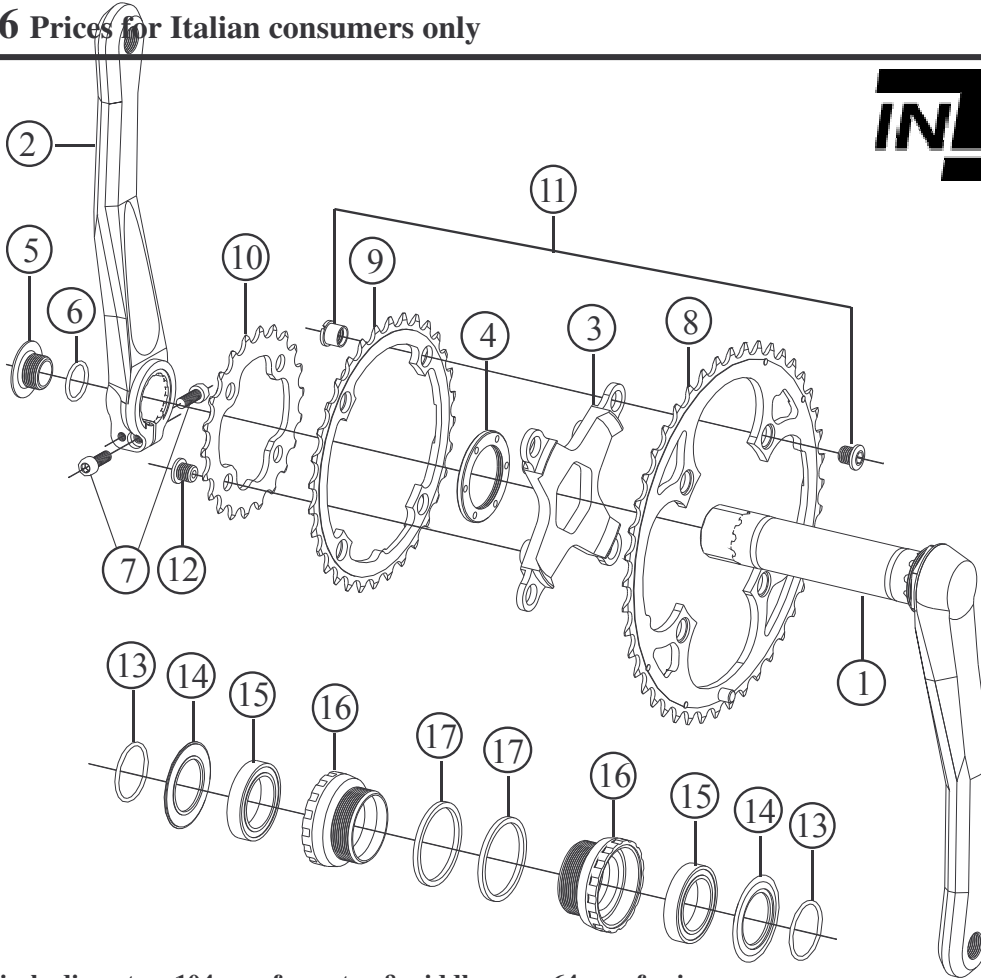
FRM

Front Crankset for MTB

CU2-M TR & **M TR Ti**. Integral Drive – Modified

2006 Prices for Italian consumers only

INTEGRAL DRIVE



Bolt circle diameter: 104 mm for outer & middle gear, 64 mm for inner gear

Item no.	Code	DESCRIPTION	Price Euro	INTERCHANGEABILITY			
				CU2-M 2X9 Integral	CU2-OS 3X Integral	CU2-M TR ISIS	CU2-M 2x9 ISIS
1	CU23R	Integral Right Arm with Axle 170-172,5-175 mm - Black	155,00	A	X	X	X
2	CU24L	Clamp Type Left Arm 170-172,5-175 mm - Black	105,00	A	X	X	X
3	CU25M	4 Arm Spider for triple rings (110/64 mm B.C.D.) Black or Gold	71,00	B	B	X	X
4	CU006	Spider Lock Ring	4,80	A	A	A	A
5	CU18	Bolt for Play Adjustment	2,50	A	A	X	X
6	OR2056	O-Ring 2056 (I.D. 14 x 1,78 mm)	-	A	A	X	X
7	TCC515/512S	1 Allen Bolt M5x15 and 1 Allen bolt M5x12 / Steel	0,20	A	A	X	X
7	TCC515Ti TCC512Ti	1 Allen Bolt M5x15 and 1 Allen bolt M5x12 / Titanium	5,70 5,70	X	X	A	A
8	CU1844O	Chain Ring FRM Pro 44T (104 mm B.C.D.)	50,20	X	A	A	X
9	CU1832M	Chain Ring FRM Pro 32T (104 mm B.C.D.)	28,50	X	A	A	X
10	CU2122I	Chain Ring FRM Pro 22T (64 mm B.C.D.)	14,00	X	A	A	X
11	CU004	Chainring Fixing Bolt & Nut (each)	2,40	A	A	A	A
10	CU004G	Chainring Fixing Bolt & Nut Gold (each)	2,50	A	A	A	A
12	CU005	Inner Gear Fixing Bolt Unit (4 pcs)	1,5	X	A	A	X
13	OR2093	O-Ring 2093 (I.D. 23,52 x 1,78 mm)	-	A	A	X	X
14	CU19	Dust Shield (plastic)	2,00	A	A	X	X
15	BB37257RS	Bearing 6805 2RS 37x25x7 mm (Red Seal for heavy duty)	16,50	A	A	X	X
16	CU20R CU20L	Right hand Cup (BC 1,37x24T) English Thread / Shell Width 68 mm Left hand Cup (BC 1,37x24T) English Thread / Shell Width 68 mm	13,70	A A	A A	X X	X X
17	CU22	Spacer 2,5 mm thick. DO NOT USE WITH 73 mm BB SHELLS	1,00	A	A	X	X

Note: Modified parts from model 2005

A: Same parts

B: Parts are usable, but different in material, appearance, finish, size.

X: Non-interchangeable

Specifications are subject to change without notice

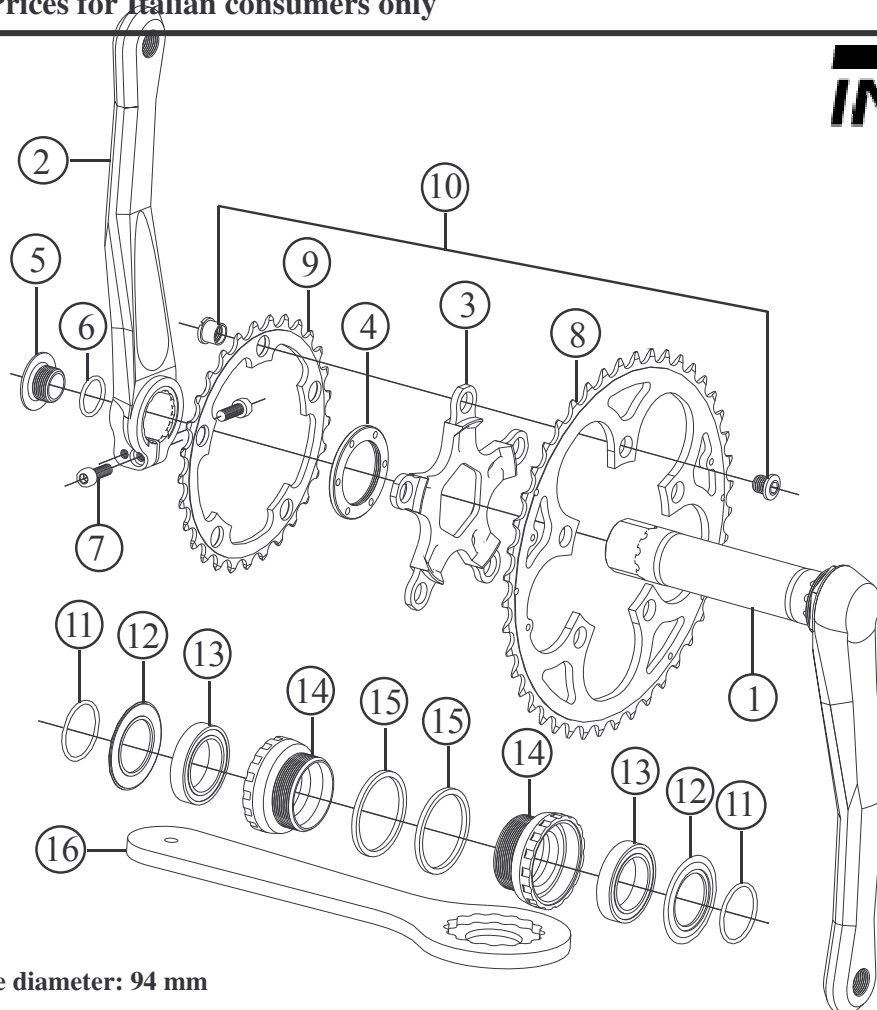
FRM

Front Crankset for MTB

CU2-M 2x9 & M2x9 Ti. Integral Drive – Modified

2006 Prices for Italian consumers only

INTEGRAL DRIVE



Bolt circle diameter: 94 mm

Item no.	Code	DESCRIPTION	Price Euro	INTERCHANGEABILITY			
				CU2-M TR Integral	CU2-OS 3X Integral	CU2-M TR ISIS	CU2-M 2x9 ISIS
1	CU23R	Integral Right Arm with Axle 170-172,5-175 mm – Black	155,00	A	X	X	X
2	CU24L	Clamp Type Left Arm 170-172,5-175 mm - Black	105,00	A	X	X	X
3	CU28M	5 Arm Spider (94 mm B.C.D.) Black or Gold	71,00	B	B	X	X
4	CU006	Spider Lock Ring	4,80	A	A	A	A
5	CU18	Bolt for Play Adjustment	2,50	A	A	X	X
6	OR2056	O-Ring 2056 (I.D. 14 x 1,78 mm)	-	A	A	X	X
7	TCC515/510S	1 Allen Bolt M5x15 and 1 Allen bolt M5x10 / Steel	0,20	A	A	X	X
7	TCC515Ti TCC512Ti	1 Allen Bolt M5x15 and 1 Allen bolt M5x12 / Titanium	5,7 5,7	X	X	A	A
8	CU19440	Chain Ring FRM Pro 44T (94 mm B.C.D.)	54,00	X	X	X	A
9	CU1929I	Chain Ring FRM Pro 29T (94 mm B.C.D.)	25,50	X	X	X	A
10	CU004	Chainring Fixing Bolt & Nut (4 sets)	2,40	A	A	A	A
10	CU004G	Chainring Fixing Bolt & Nut Gold (each)	2,50	A	A	A	A
11	OR2093	O-Ring 2093 (I.D. 23,52 x 1,78 mm)	-	A	A	X	X
12	CU19	Dust Shield (plastic)	2,00	A	A	X	X
13	BB37257RS	Bearing 6805 2RS 37x25x7 mm (Red Seal for heavy duty)	16,50	A	A	X	X
14	CU20R CU20L	Right hand Cup (BC 1,37x24T) English Thread / Shell Width 68 mm Left hand Cup (BC 1,37x24T) English Thread / Shell Width 68 mm	13,70	A A	A A	X X	X X
15	CU22	Spacer 2,5 mm thick. DO NOT USE WITH 73 mm BB SHELLS	1,00	A	A	X	X
16	CU26	Tool for Bottom Bracket Cups	20,00	A	A	X	X

Note: Modified parts from model 2005

A: Same parts

B: Parts are usable, but different in material, appearance, finish, size.

X: Non-interchangeable

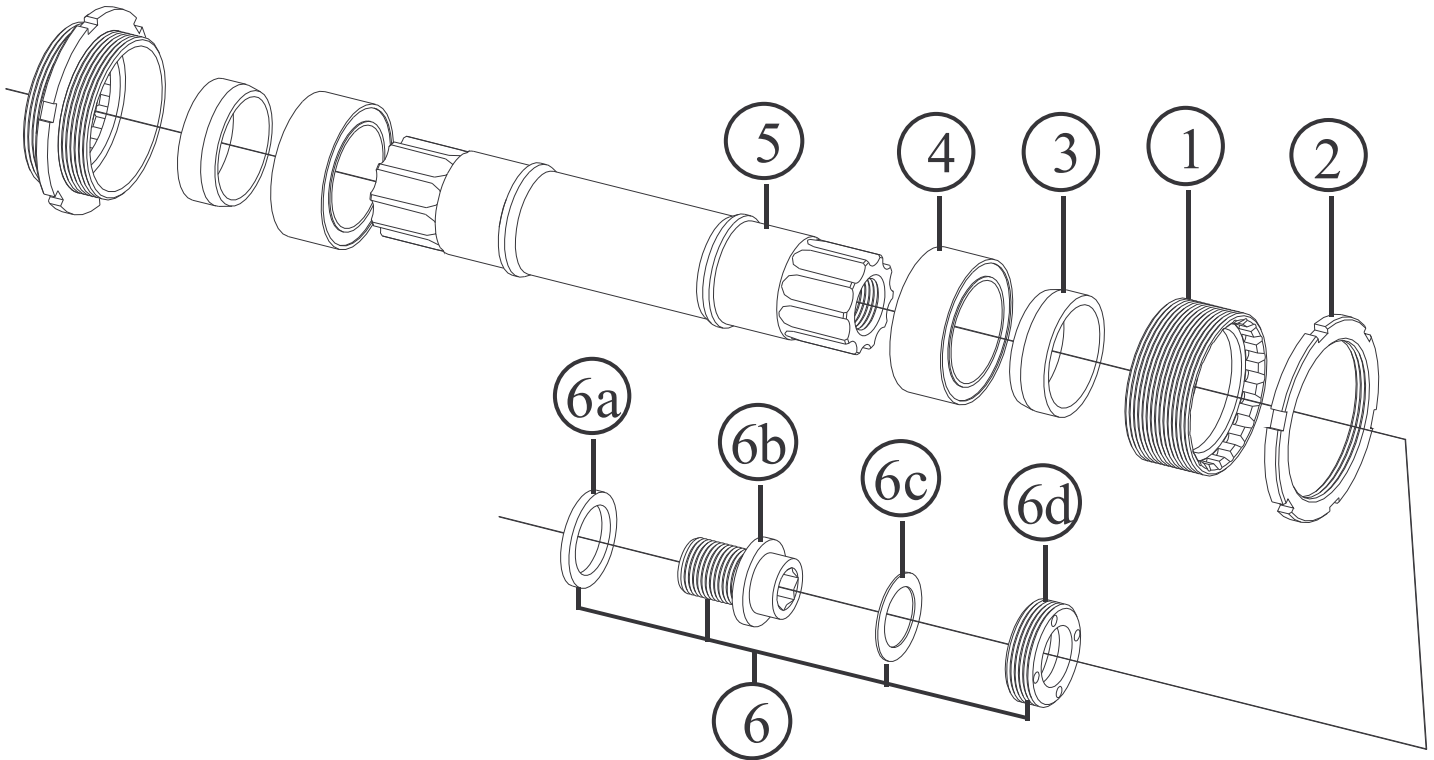
Specifications are subject to change without notice

FRM

Bottom Bracket Assembly

CU2-BB ISIS AL IMPROVED

2006 Prices for Italian consumers only



Spindle length: 108 or 113 mm

Item no.	Code	DESCRIPTION	Price Euro	INTERCHANGEABILITY		
				ISIS 2003	ISIS 2004	CU2-BB Quadro
1	BB003AR BB003AL	Right hand Cup (BC 1,37"x24T) English Thread for Shell Width 68 mm Left hand Cup (BC 1,37"x24T) English Thread for Shell Width 68 mm	10,30	A A	A A	X X
1	BB004A	Right hand & Left hand Cup (M36x24T) Italian Thread for Shell Width 70 mm	10,30	A	A	X
2	BB001R BB001L	Right hand Lock-Ring (BC 1,37"x24T) English Thread for Shell Width 68 mm Left hand Lock-Ring (BC 1,37"x24T) English Thread for Shell Width 68 mm	4,60	A A	A A	A A
2	BB002	Right hand Lock-Ring (M36x24T) Italian Thread for Shell Width 70 mm	4,60	A	A	A
3	BB008OS	Male Shoulder: 8,5 mm long for 113 mm spindle. Bore 21,5 mm	1,00	X	X	X
3	BB009OS	Male Shoulder: 6,0 mm long for 108 mm spindle. Bore 21,5 mm	1,00	X	X	X
4	DR2231LLB	Bearing 31x21,5x12 mm TWIN BALL RACE	8,50	X	X	X
5	BB011	Alloy spindle 108 mm long	54,00	X	X	X
5	BB012	Alloy spindle 113 mm long	54,00	X	X	X
6	CU003	Self-Extracting Bolt assembly (M12)	4,75	A	A	X
6a	CU002A	Brass Washer (Self-Extracting System)	0,35	A	A	X
6b	CU002B	M 12 Crank Arm Fixing Bolt in Light Alloy (Self-Extracting System)	2,20	A	A	X
6c	CU001C	Plastic Washer (Self-Extracting System)	0,10	A	A	X
6d	CU001D	Crank Arm Cap in Light Alloy (Self-Extracting System)	2,10	A	A	X

Note: Modified parts from model 2005

A: Same parts

B: Parts are usable, but different in material, appearance, finish, size.

X: Non-interchangeable

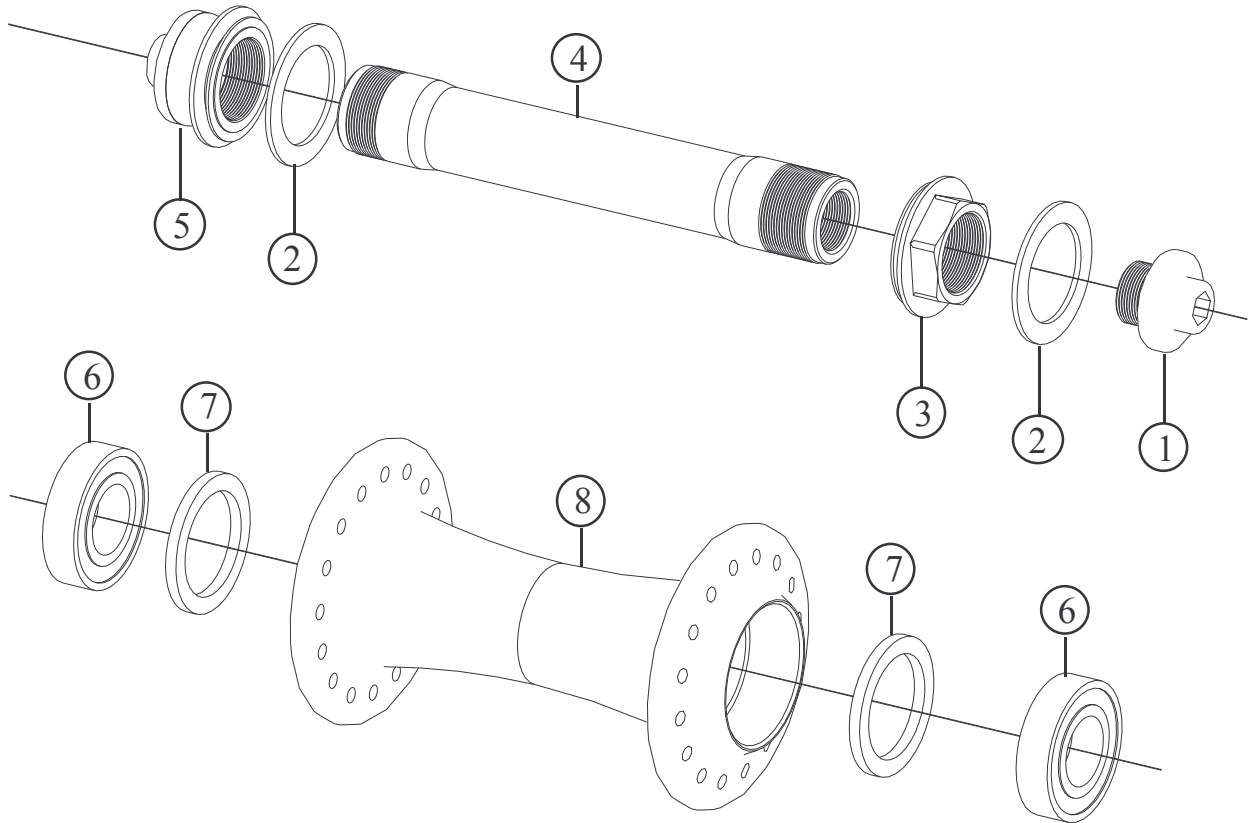
Specifications are subject to change without notice

FRM

Front Hub for Road & MTB

FL-R PRO & FL-M PRO – Modified

2006 Prices for Italian consumers only



ALSO SUPPLIED ON WHEELSET: FL-R12, FL-M12 and FL-M12 ZTR

Item no.	Code	DESCRIPTION	Price Euro	INTERCHANGEABILITY					
				FL-M Team	FL-M Team Disc	FL-M Pro/Comp Disc	FL-M15 Pro Disc	SP Pro/Comp	FL-R or SP-R Feather
1	FH0115	Axle Cap End: M10,5 Long 13,5 / Light Alloy	2,00	A	A	X	A	X	X
2	3FH02DS	Rubber Seal: 24x17x1	0,25	A	A	A	A	X	X
3	FH0215	Inner Nut: M15x17 with rubber shield / L. alloy	3,25	A	A	X	A	X	X
4	FH0315	Hub Axle 92,5 mm / Dia 15 mm / Light Alloy	31,00	A	A	X	A	X	X
5	FH 0415	Axle Cap End: M15 with rubber shield / L. alloy	3,25	A	A	X	A	X	X
6	HB24155	Bearing 24x15x5 mm 6802 2RS	8,40	A	A	X	A	X	X
7	FH05A1	Bearing Spacer 23,8x18x1,6 mm / Light Alloy	0,60	X	X	X	A	X	X
8	FH07F24	Hub Body 24 holes / Light Alloy, Black	45,00	X	X	X	X	X	X
8	FH07F28	Hub Body 28 holes / Light Alloy - Black	45,00	X	X	X	X	X	X
8	FH07F32	Hub Body 32 holes / Light Alloy - Black	45,00	X	X	X	X	X	X

Note: Modified parts from model 2005

A: Same parts

B: Parts are usable, but different in material, appearance, finish, size.

X: Non-interchangeable

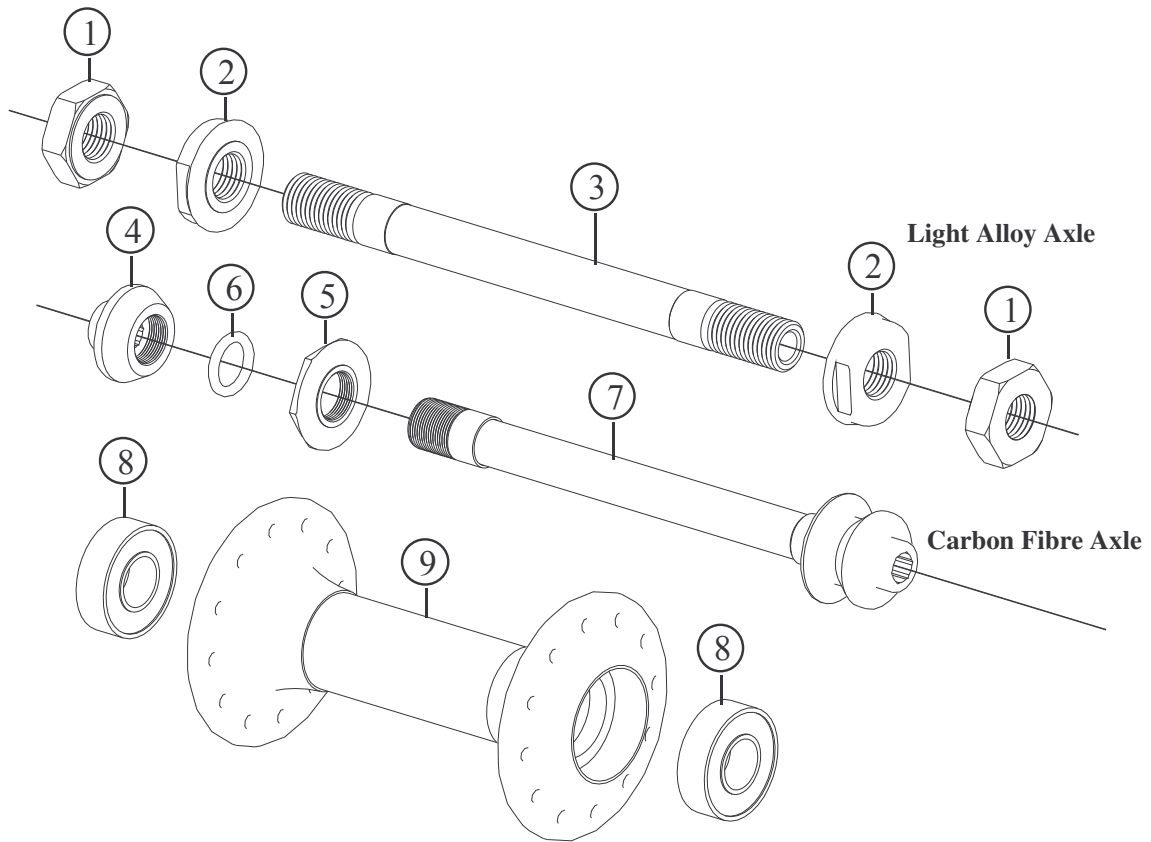
Specifications are subject to change without notice

FRM

Front Hub for Road Only

FL-R TEAM & TEAM CA - New

2006 Prices for Italian consumers only



FL-R TEAM CA ALSO SUPPLIED ON WHEELSET: FL-R 21 Aerolite and FL-R23 Aerolite Carbon

Item no.	Code	DESCRIPTION	Price Euro	INTERCHANGEABILITY					
				FL Comp	FL Pro	LF-M Team/ Team Disc	FL-M Pro/ Comp Disc	SP CompPro	FL or SP-R Feather
1	FH003	Lock Nut: M9 x 17 mm / Thickness 5,5 mm / Light Alloy	1,90	X	X	X	X	X	A
2	FH02C	Inner Nut: M9 x 16 mm / Dia. 20 mm / Light Alloy	3,00	X	X	X	X	X	A
3	FH04C	Hub Axle 109 mm / Dia. 9mm / Light alloy	16,50	X	X	X	X	X	A
4	FH003CA	Lock Nut for carbon fibre axle / Light alloy – Team CA	3,50	X	X	X	X	X	X
5	FH02CCA	Inner Nut for carbon fibre axle (Light alloy – Team CA)	3,00	X	X	X	X	X	X
6	FH02DCA	Silicon O-Ring - Team CA	0,20	X	X	X	X	X	X
7	FH04CCA	Carbon Fibre Axle with bonded light alloy ends – Team CA	21,50	X	X	X	X	X	X
8	HB2097	Bearing 699 20x9x6 mm 2RS	9,90	X	X	X	X	X	A
9	FH06B20G	Hub Body 20 h: Alloy Flanges (Gold)+Carbon Fibre Centre	70,00	X	X	X	X	X	X
9	FH07B24G	Hub Body 24 h: Alloy Flanges (Gold)+Carbon Fibre Centre	70,00	X	X	X	X	X	X
9	FH07B28G	Hub Body 28 h: Alloy Flanges (Gold)+Carbon Fibre Centre	70,00	X	X	X	X	X	X
9	FH07B32G	Hub Body 32 h: Alloy Flanges (Gold)+Carbon Fibre Centre	70,00	X	X	X	X	X	X
9	FH06B20S	Hub Body 20 h: Alloy Flanges (Silver)+Carbon Fibre Cent.	70,00	X	X	X	X	X	X
9	FH07B24S	Hub Body 24 h: Alloy Flanges (Silver)+Carbon Fibre Cent.	70,00	X	X	X	X	X	X
9	FH07B28S	Hub Body 28 h: Alloy Flanges (Silver)+Carbon Fibre Cent.	70,00	X	X	X	X	X	X
9	FH07B32S	Hub Body 32 h: Alloy Flanges (Silver)+Carbon Fibre Cent.	70,00	X	X	X	X	X	X

A: Same parts

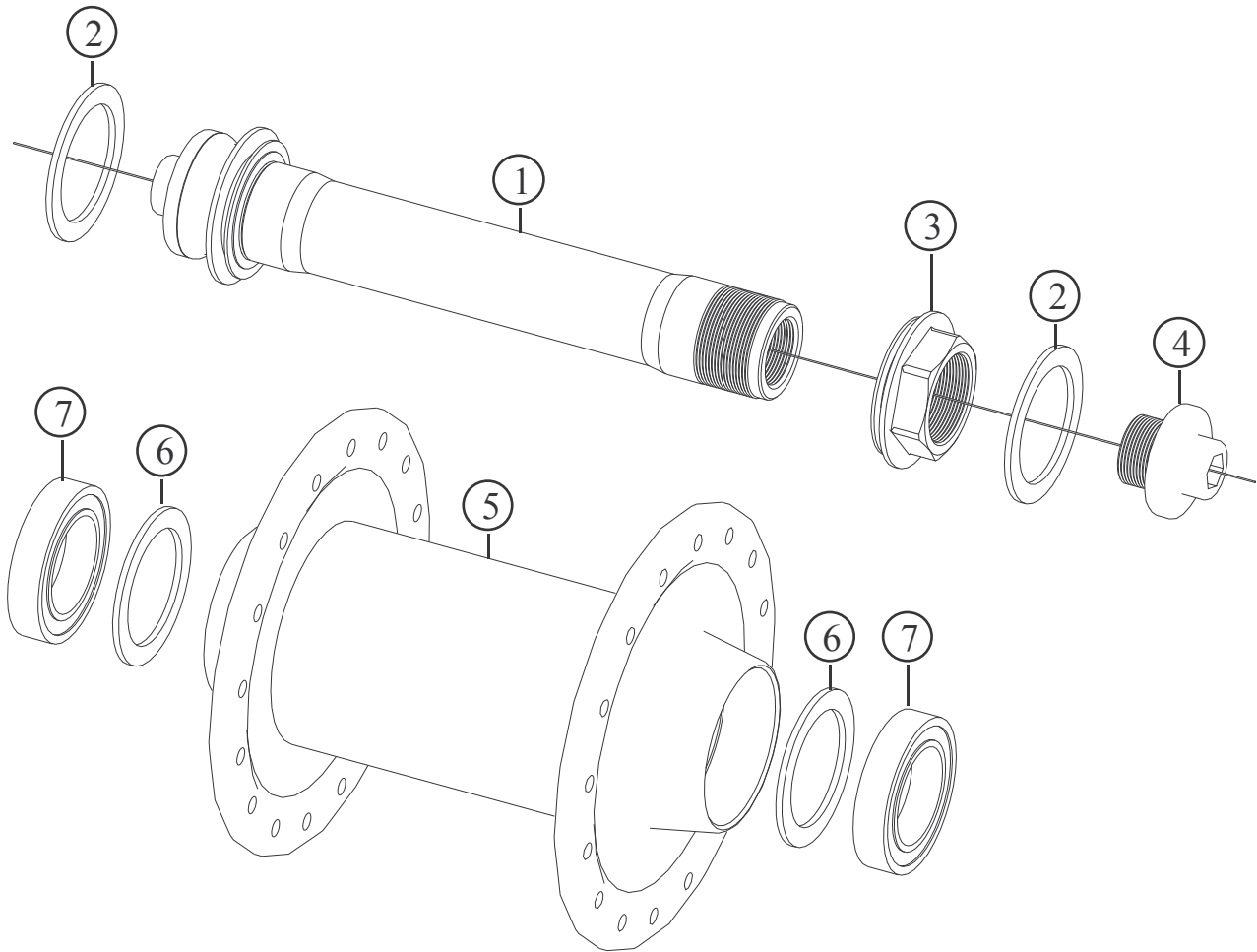
B: Parts are usable, but different in material, appearance, finish, size.

X: Non-interchangeable

Specifications are subject to change without notice

FRM
Front Hub for MTB
FL-M TEAM - New

2006 Prices for Italian consumers only



ALSO SUPPLIED ON WHEELSETS: FL-M21 ZTR

Item no.	Code	DESCRIPTION	Price Euro	INTERCHANGEABILITY					
				FL Comp Pro	FL-Pro 2006	SP-R FL-R Feather	FL-M Pro Disc	SP Comp Pro	FL-M Team Disc
1	FH0315	Hub Axle Dia 15 mm with bonded end cap/ Light Alloy	33,25	X	A	X	A	X	A
2	3FH02DS	Rubber Seal: 24x17x1	0,25	X	A	X	A	X	A
3	FH0215	Inner Nut: M15x17 with rubber shield / L. alloy	3,25	X	A	X	A	X	A
4	FH0115	Axle Cap End: M10,5 Long 13,5 / Light Alloy	2,00	X	A	X	A	X	A
5	FLMTVF32	Hub Body Carbon fibre/Alloy. Gold anodised. 32H	62,00	X	B	X	X	X	X
5	FLMTVF28	Hub Body Carbon fibre/Alloy. Gold anodised. 28H	62,00	X	B	X	X	X	X
6	BS24181	Bearing Spacer 23,8x18x1,0 mm / Light Alloy	0,60	X	X	X	X	X	A
7	HB24155	Bearing 24x15x5 mm 6802 2RS	8,40	X	A	X	A	X	A

A: Same parts
B: Parts are usable, but different in material, appearance, finish, size.
X: Non-interchangeable

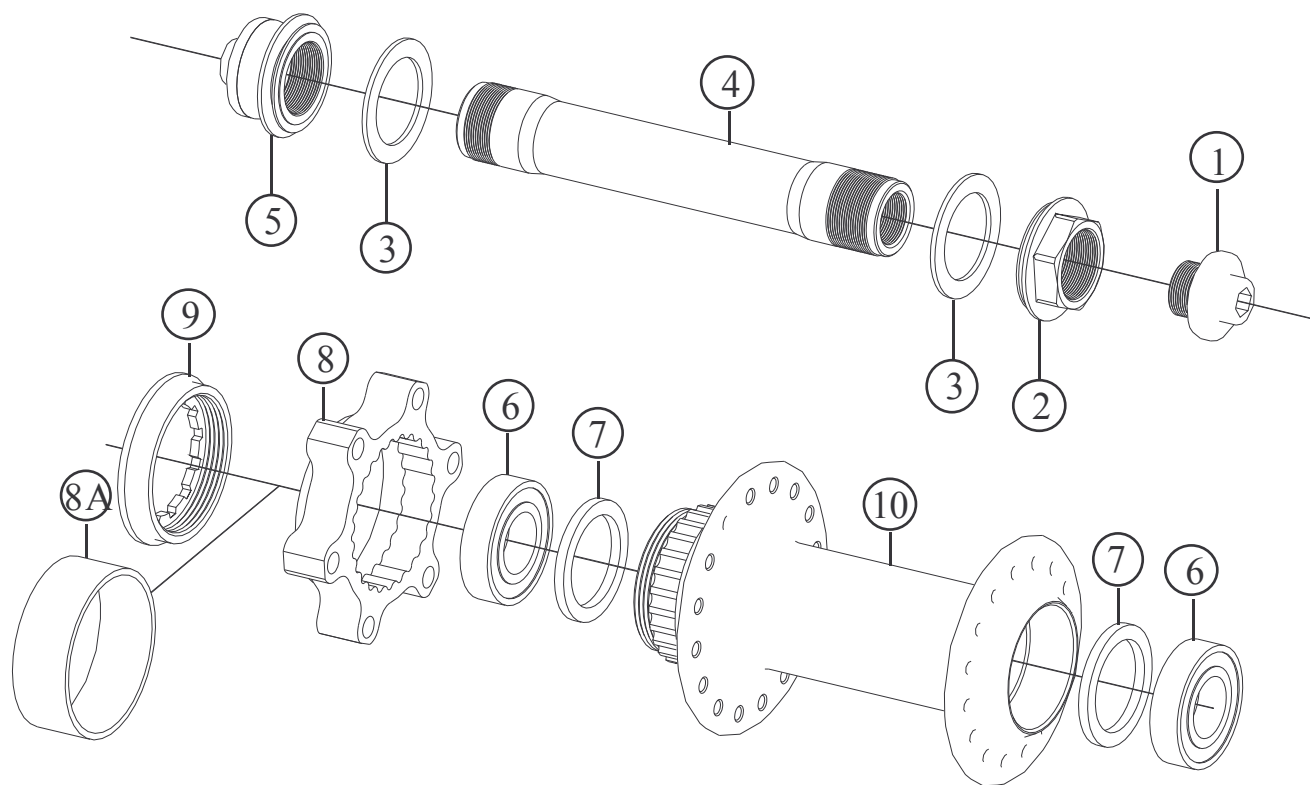
Specifications are subject to change without notice

FRM

Front Hub for MTB

FL-M PRO DISC - Modified

2006 Prices for Italian consumers only



ALSO SUPPLIED ON WHEELSETS: FL-M12 Disc and FL-M12 Olympic Disc

Item no.	Code	DESCRIPTION	Price Euro	INTERCHANGEABILITY							
				FL& SP Comp Pro	FL-R Feather	SP-R Feather	FL-M Pro 15	FL-M Comp Disc	FL-M Pro 15	FL-M Team	FL-M Team Disc
1	FH0115	Axle Cap End: M10,5 Long 13,5 / Light Alloy	1,90	X	X	X	A	X	A	A	A
2	FH0215	Inner Nut: M15x17 with rubber seal / Light alloy	3,25	X	X	X	A	X	A	A	A
3	3FH02DS	Rubber Seal: 24x17x1	0,25	X	A	X	A	A	A	A	A
4	FH0315	Hub Axle 92,5 mm / Dia 15 mm / Light Alloy	31,00	X	X	X	A	X	A	A	A
5	FH 0415	Axle Cap End: M15 with rubber seal / Light alloy	3,25	X	X	X	A	X	A	A	A
6	HB24155	Bearing 24x15x5 mm 6802 2RS	8,40	X	X	X	A	X	A	A	A
7	FH05A2	Bearing Spacer 23,8x18x2,2 mm / Light Alloy	0,60	X	X	X	A	X	A	X	X
8	DH-DF2	Disc Flange without ribs: 6 holes International Std.	25,00	X	X	X	X	B	X	X	A
8A	DH-VB1	Plastic spacer for V-Brake use	4,15	X	X	X	X	A	X	X	A
9	DH-LR1	Lock Ring	8,30	X	X	X	X	A	X	X	A
10	FH07C28	Hub Body 28 holes / Light Alloy - Black	47,00	X	X	X	X	A	X	X	X
10	FH07C32	Hub Body 32 holes / Light Alloy - Black	47,00	X		X	X	X	A	X	X
11	OR2056	Silicon O-Ring 2056 (I.D.14x1,78mm)	0,20	X		X	X	A	X	X	X

Note: Modified parts from model 2005

A: Same parts

B: Parts are usable, but different in material, appearance, finish, size.

X: Non-interchangeable

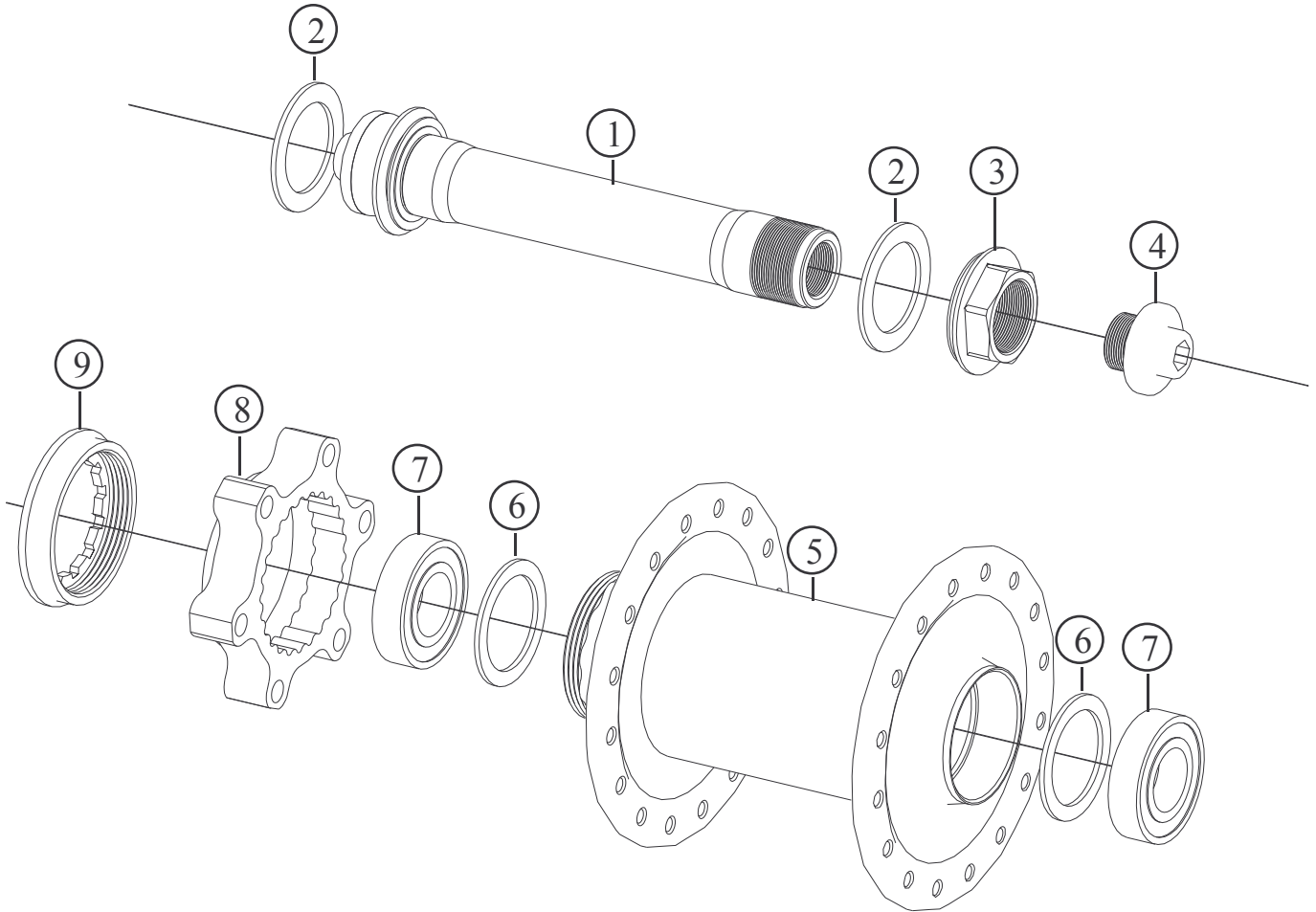
Specifications are subject to change without notice

FRM

Front Hub for MTB

FL-M TEAM DISC- New

2006 Prices for Italian consumers only



ALSO SUPPLIED ON WHEELSETS: FL-M21 Olympic Disc

Item no.	Code	DESCRIPTION	Price Euro	INTERCHANGEABILITY					
				FL Comp Pro	FL-Pro 2006	SP-R FL-R Feather	FL-M Pro Disc	SP Comp Pro	FL-M Team
1	FH0315	Hub Axle Dia 15 mm with bonded end cap/ Light Alloy	33,25	X	A	X	A	X	A
2	3FH02DS	Rubber Seal: 24x17x1	0,25	X	A	X	A	X	A
3	FH0215	Inner Nut: M15x17 with rubber shield / L. alloy	3,25	X	A	X	A	X	A
4	FH0115	Axle Cap End: M10,5 Long 13,5 / Light Alloy	2,00	X	A	X	A	X	A
5	FLMTDF32	Hub Body Carbon fibre/Alloy. Gold anodised. 32H	62,00	X	B	X	X	X	X
5	FLMTDF28	Hub Body Carbon fibre/Alloy. Gold anodised. 28H	62,00	X	B	X	X	X	X
6	BS24181	Bearing Spacer 23,8x18x1,0 mm / Light Alloy	0,60	X	X	X	X	X	A
7	HB24155	Bearing 24x15x5 mm 6802 2RS	8,40	X	A	X	A	X	A
8	DH-DF2	Disc Flange without ribs: 6 holes International Std.	25,00	X	X	X	A	X	X
9	DH-LR1	Lock Ring	8,30	X	X	X	A	X	X

A: Same parts

B: Parts are usable, but different in material, appearance, finish, size.

X: Non-interchangeable

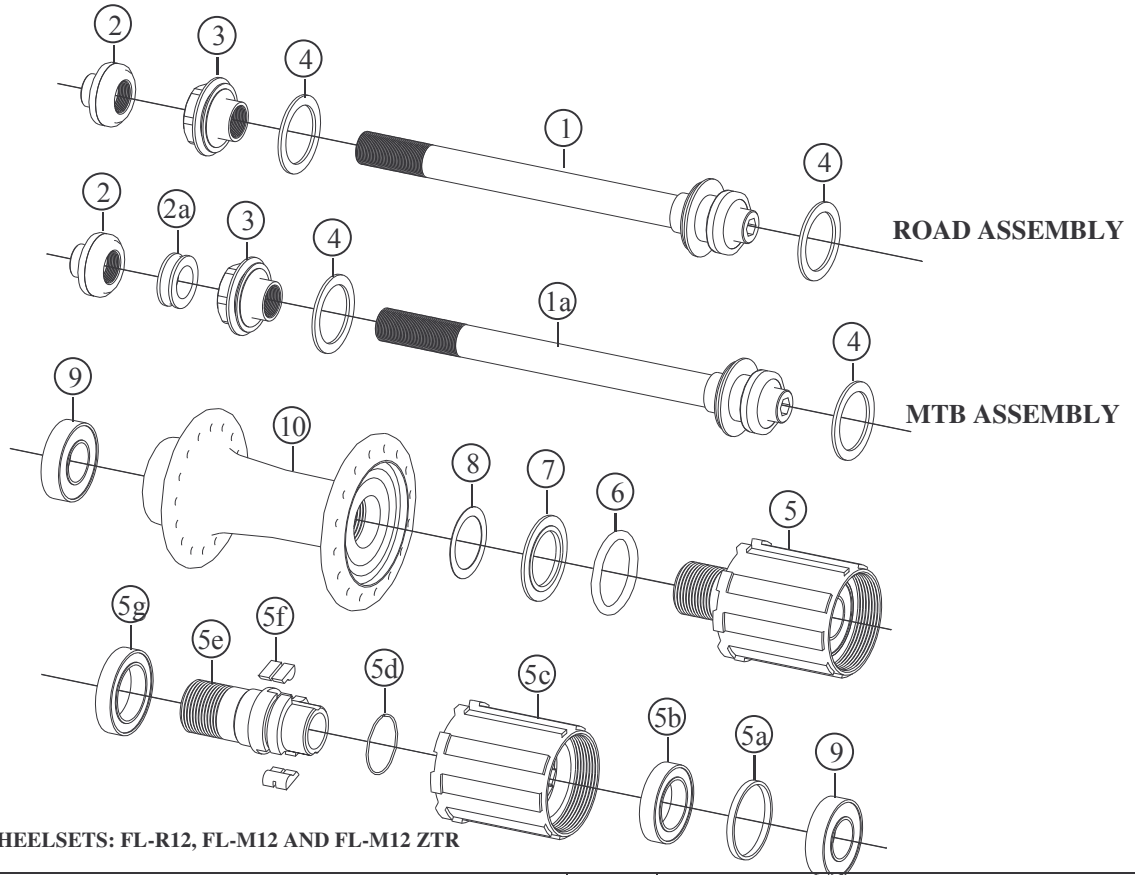
Specifications are subject to change without notice

FRM

Rear Hub for Road & MTB

FL-R PRO & FL-M PRO - Modified

2006 Prices for Italian consumers only



ALSO SUPPLIED ON WHEELSETS: FL-R12, FL-M12 AND FL-M12 ZTR

Item no.	Code	DESCRIPTION	Price Euro	INTERCHANGEABILITY						
				FL-M Team 2006	FL-M Team Disc 2006	FL-R Team & CA 2005/06	FL-M Pro 2004/05	SP-M Comp Pro 04/05	SP-R Comp Pro 04/05	SP-R Team 04/06
1	RHA01B	Hub Axle Assembled Road. Lock-nut 130 mm / Light alloy	21,00	X	X	X	X	X	X	X
1a	RHA01D	Hub Axle Assembled MTB. Lock-nut 135 mm / Light alloy	21,00	A	A	X	X	X	X	X
2	RHA01A	Axle Cup End for 5mm Allen Key / Light Alloy	1,90	X	X	X	X	X	X	X
2a	RH02FL	Spacer 5 mm thick / Light Alloy	1,00	X	X	X	A	A	X	X
3	RHA01C	Left Hand Adjustable Inner Nut / Light Alloy	3,00	A	A	X	X	X	X	X
4	3FH02DS	Rubber Seal: 24x17x1	0,25	A	A	A	A	A	X	X
5	RH4SD16T	Freehub Body Ass.: Sly Device 16T / Light Alloy/Steel	89,90	A	A	B	B	B	B	B
5a	RH04SL1	Freewheel Body Bearing Spacer / Light Alloy	0,50	A	A	A	A	A	A	A
5b	HB24155	Freewheel Body Middle Bearing 24 x 15 x 5 mm 6802 2RS	9,50	A	A	A	A	A	A	A
5c	RH04SLS	Freewheel Body for Shimano / Light Alloy	29,00	A	A	A	A	A	A	A
5d	RHLS07	Lips spring 0,7 mm	0,50	A	A	A	A	A	A	A
5e	RH04SD5	Freewheel Body Fixing Bolt M16 / High Tensile Steel	35,00	A	A	B	B	B	B	B
5f	RH04LP	Freewheel lip /High Tensile Steel	5,40 pc	A	A	A	A	A	A	A
5g	HB26175	Freewheel Body Inner Bearing 26 x 17 x 5 mm 6803 2RS	10,90	A	A	A	A	A	A	A
6	OR128SIL	O-Ring 128 in Silicon Rubber (Red)	0,60	A	A	X	X	X	X	X
7	RH04SL3A	Freewheel Body Washer / High Tens. Steel. 2,5 mm thick	3,00	A	A	A	A	A	A	A
8	RH04SHI	Steel shim 21,8x16,2x0,2	0,2	A	A	X	X	X	X	X
9	HB24126	Freewheel Body Outer Bearing 24x12x6 mm 6901 2RS	8,40	A	A	A	A	A	A	A
10	RH06H28	Hub Body M16 28 holes / Light Alloy – Black	54,00	X	X	X	X	X	X	X
10	RH06H32	Hub Body M16 32 holes / Light Alloy - Black	54,00	X	X	X	X	X	X	X
	RHLRSH11	Lock-ring in light alloy for cog-set – Shimano 11T	8,50	A	A	A	A	A	A	A
	RHLRSH12	Lock-ring in light alloy for cog-set – Shimano 12T	8,50	A	A	A	A	A	A	A
	RHLRCA11	Lock-ring in light alloy for cog-set – Campy 11T	8,50	A	A	A	A	A	A	A
	RHLRCA12	Lock-ring in light alloy for cog-set – Campy 12T	8,50	A	A	A	A	A	A	A

Note: Modified parts from model 2005 A: Same parts. B: Parts are usable, but different in material, appearance, finish, size, etc. X: Non-interchangeable

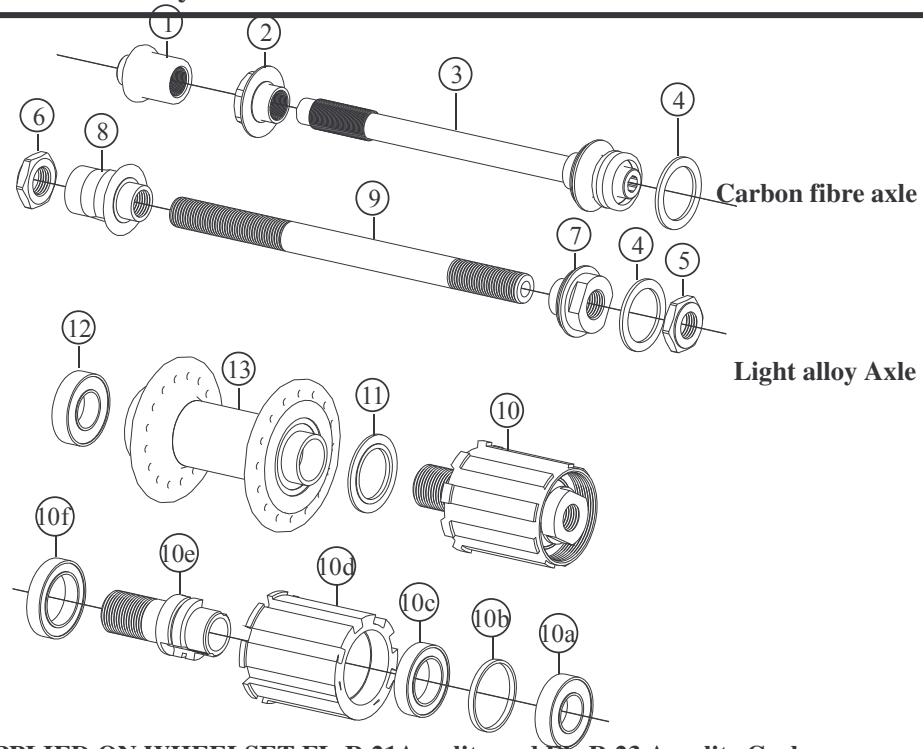
Specifications are subject to change without notice

FRM

Rear Hub for Road Only

FL-R TEAM - Modified & FL-R TEAM CA - New

2006 Prices for Italian consumers only



FL-R TEAM CA IS ALSO SUPPLIED ON WHEELSET FL-R 21Aerolite and FL-R 23 Aerolite Carbon

Item no.	Code	DESCRIPTION	Price Euro	INTERCHANGEABILITY				
				FL-R Comp 2004/05	FL-R Pro 2004/05	FL-R Pro 2006	SP-R Team 04/05	SP-R Team 2006
1	RH003CA	Lock Nut for carbon fibre axle / Light alloy – Team CA	3,50	X	X	X	X	X
2	RH02CCA	Inner Nut for carbon fibre axle (Light alloy – Team CA)	3,00	X	X	X	X	X
3	FH04CCA	Carbon Fibre Axle with bonded light alloy ends – Team CA	25,50	X	X	X	X	X
4	3FH02DS	Rubber Seal: 24x17x1	0,25	A	A	A	X	A
5	RH01A	Right Hand Lock Nut: M10 x 17 mm / 4,5 mm thick / Steel	1,50	A	A	A	A	A
6	RH01B	Left hand Lock Nut: M10x17 mm / 4,5 mm / Light Alloy	1,90	B	A	A	A	A
7	RH02CRS	Right Hand Inner Nut: M10 x 16 mm / Light Alloy	3,00	B	B	A	X	A
8	RH02DL	Left Hand Inner Nut: M10 x 16 mm / Light Alloy	3,50	X	X	X	X	X
9	RH03AA	Hub Axle 140,6 mm / Dia. 10 mm / Light alloy	18,60	B	A	A	A	A
10	RHSD15	Freewheel Body: Sly Device 15T / Light Alloy-Titanium	89,90	B	A	A	A	A
10A	HB24126	Freewheel Body Outer Bearing 24x12x6 mm 6901 2RS	8,40	A	A	A	A	A
10B	RH04SL1	Freewheel Body Bearing Spacer / Light Alloy	0,50	A	A	A	A	A
10C	HB24155	Freewheel Body Middle Bearing 24 x 15 x 5 mm 6802 2RS	9,50	A	A	A	A	A
10D	RH04SLS	Freewheel Body for Shimano / Light Alloy	29,00	A	A	A	A	A
10D	RH04SLC	Freewheel Body for Campagnolo / Light Alloy	29,00	A	A	A	A	A
10E	RH04SD2	Freewheel Body Fixing Bolt M15 Titanium with lips and spring	38,40	B	A	A	A	A
10F	HB26175	Freewheel Body Inner Bearing 26 x 17 x 5 mm 6803 2RS	10,90	A	A	A	A	A
11	RH04SL3B	Freewheel Body Washer / Hardened Steel. 1,5 mm thick	3,00	X	X	X	X	X
12	HB24126	Bearing 24x12x6 mm 6901 2RS	8,40	A	A	A	A	A
13	RH05G24	Hub Body M15 24 h: Light Alloy Flanges / Carbon Fibre – Silver	115,00	X	X	X	X	X
13	RH05G28	Hub Body M15 28 h: Light Alloy Flanges / Carbon Fibre – Silver	115,00	X	X	X	X	X
13	RH05G32	Hub Body M15 32 h: Light Alloy Flanges / Carbon Fibre – Silver	115,00	X	X	X	X	X
13	RH05G24G	Hub Body M15 24 h: Light Alloy Flanges / Carbon Fibre – Gold	115,00	X	X	X	X	X
13	RH05G28G	Hub Body M15 28 h: Light Alloy Flanges / Carbon Fibre – Gold	115,00	X	X	X	X	X
13	RH05G32G	Hub Body M15 32 h: Light Alloy Flanges / Carbon Fibre – Gold	115,00	X	X	X	X	X
	RHLRSH11	Lock-ring in light alloy for cog-set – Shimano 11T	8,50	A	A	A	A	A
	RHLRSH12	Lock-ring in light alloy for cog-set – Shimano 12T	8,50	A	A	A	A	A
	RHLRCA11	Lock-ring in light alloy for cog-set – Campy 11T	8,50	A	A	A	A	A
	RHLRCA12	Lock-ring in light alloy for cog-set – Campy 12T	8,50	A	A	A	A	A

Note: Modified parts from model 2005 A: Same parts B: Parts are usable, but different in material, appearance, finish, size. X: Non-interchangeable

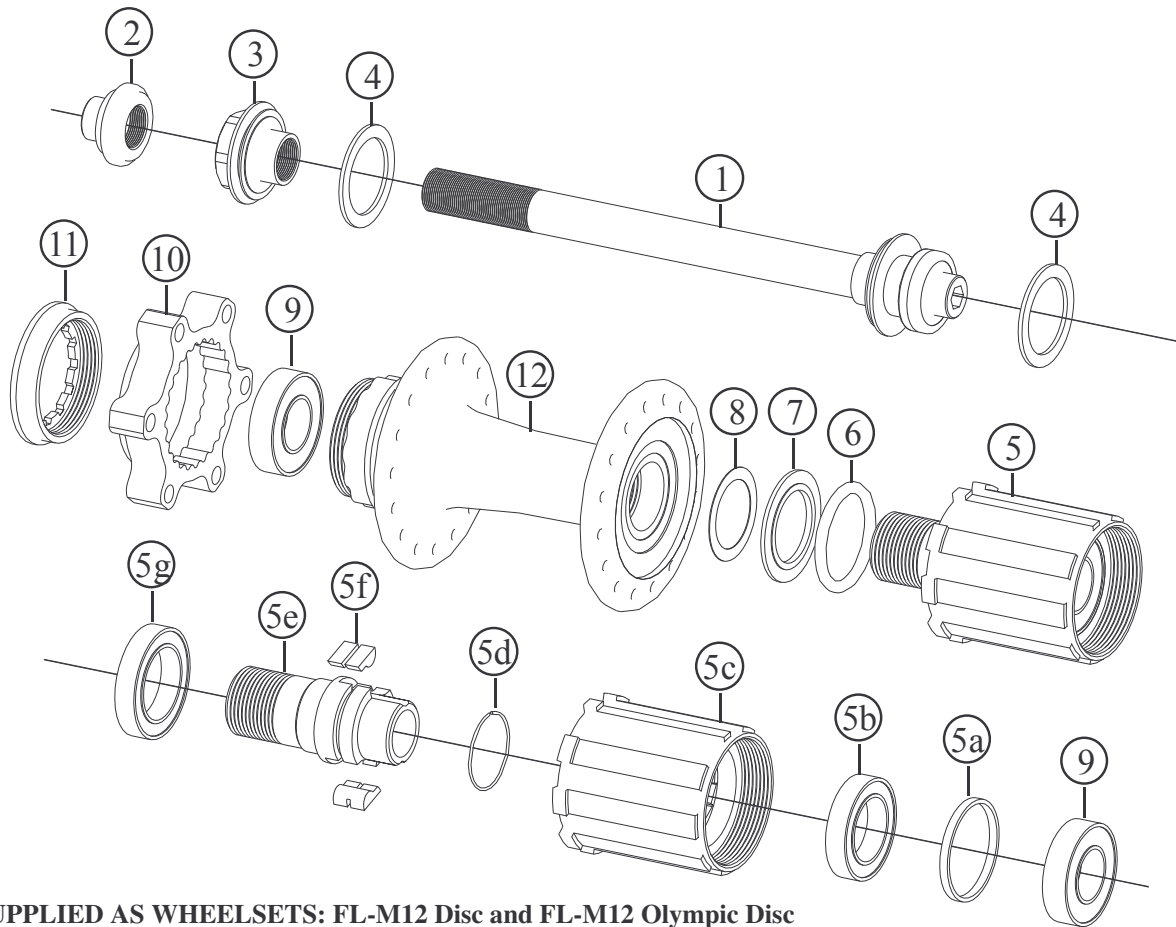
Specifications are subject to change without notice

FRM

Rear Hub for MTB

FL-M PRO DISC - Modified

2006 Prices for Italian consumers only



ALSO SUPPLIED AS WHEELSETS: FL-M12 Disc and FL-M12 Olympic Disc

Item no.	Code	DESCRIPTION	Price Euro	INTERCHANGEABILITY					
				FL-M Team Disc 2006	FL-M Comp/Pro 2004/05	FL-M Pro 2006	FL-M Comp/Pro Disc 2004/05	SP-M Comp	SP-M Pro
1	RHA01B	Hub Axle assembled. Lock-nut 135 mm / Light alloy	21,00	A	X	A	X	X	X
2	RHA01A	Axle Cup End for 5mm Allen Key / Light Alloy	1,90	A	X	A	X	X	X
3	RHA01C	Left Hand Adjustable Inner Nut / Light Alloy	3,00	A	X	A	X	X	X
4	3FH02DS	Rubber Seal: 24x17x1	0,25	A	X	A	X	X	X
5	RH4SD16T	Freehub Body Ass.: Sly Device 16T / Light Alloy/Steel	89,90	A	B	A	B	B	B
5a	RH04SL1	Freewheel Body Bearing Spacer / Light Alloy	0,50	A	A	A	A	A	A
5b	HB24155	Freewheel Body Middle Bearing 24x15x5 mm 6802 2RS	9,50	A	A	A	A	A	A
5c	RH04SLS	Freewheel Body for Shimano / Light Alloy	29,00	A	A	A	A	A	A
5d	RHLS07	Lips spring 0,7 mm	0,50	A	A	A	A	A	A
5e	RH04SD5	Freewheel Body Fixing Bolt M16 / High Tensile Steel	35,00	A	B	A	B	B	B
5f	RH04LP	Freewheel lip /High Tensile Steel	5,40 pc	A	A	A	A	A	A
5g	HB26175	Freewheel Body Inner Bearing 26x17x5 mm 6803 2RS	10,90	A	A	A	A	A	A
6	OR128SIL	O-Ring 128 in Silicon Rubber (Red)	0,60	A	X	A	X	X	X
7	RH04SL3A	Freewheel Body Washer / High Tens. Steel. 2,5 mm thick	3,00	A	A	A	A	A	A
8	RH04SHI	Steel shim 21,8x16,2x0,2	0,2	A	X	A	X	X	X
9	HB24126	Freewheel Body Outer Bearing 24x12x6 mm 6901 2RS	8,40	A	A	A	A	A	A
10	DH-DF2	Disc Flange 6 holes International Std. (Black anodised)	25,00	A	X	X	B	X	X
11	DH-LR1	Lock Ring (Gold anodised)	8,30	A	X	X	A	X	X
12	RH05H28	Hub Body M16 28 holes / Light Alloy - Black	57,00	B	X	B	X	X	X
12	RH05H32	Hub Body M16 32 holes / Light Alloy - Black	57,00	B	X	B	X	X	X
	RHLRSH11	Lock-ring in light alloy for cog-set - Shimano 11T	8,50	A	A	A	A	A	A
	RHLRSH12	Lock-ring in light alloy for cog-set - Shimano 12T	8,50	A	A	A	A	A	A

Note: Modified parts from model 2005

A: Same part B: Parts are usable, but different in material, appearance, finish, size X: Non-interchangeable

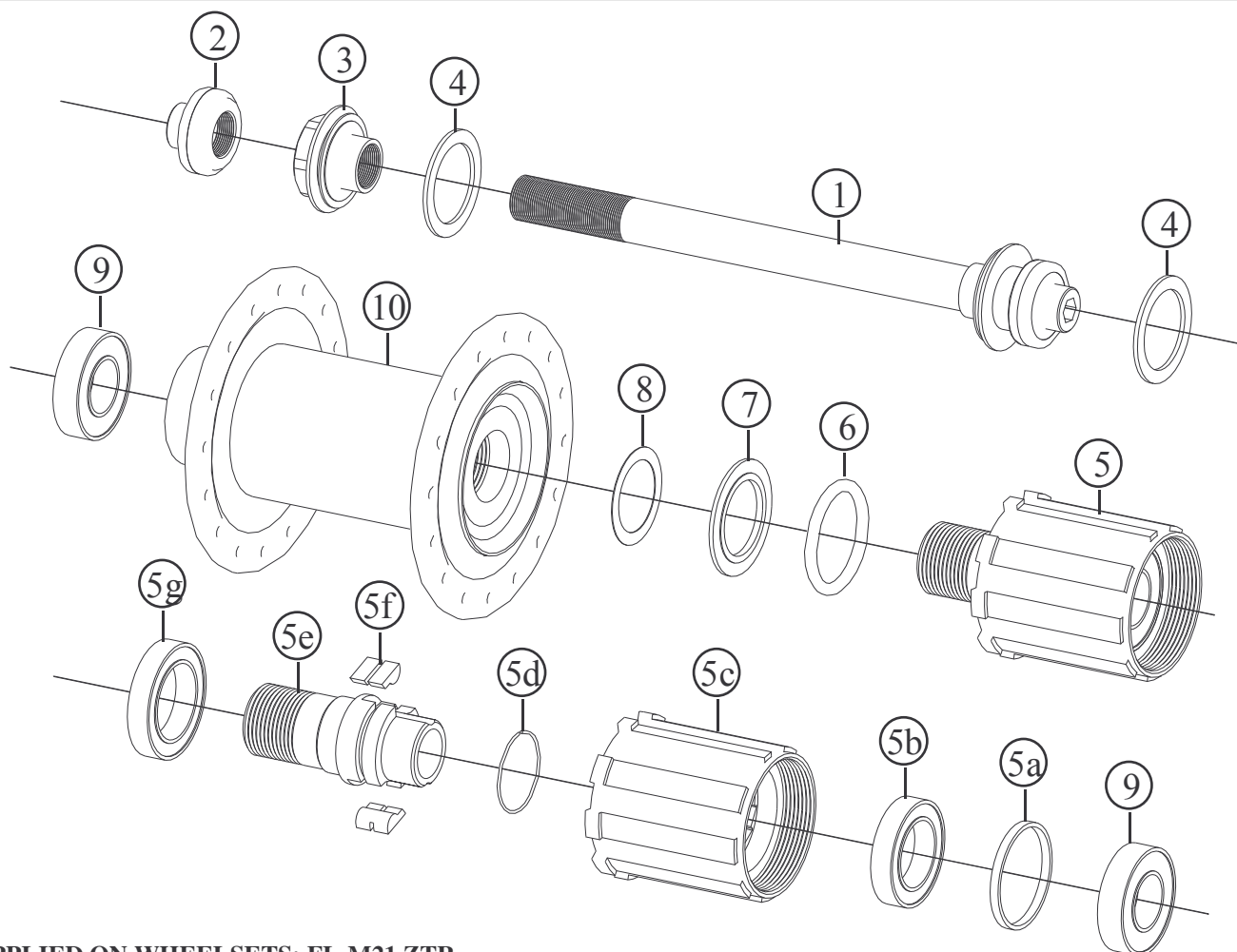
Specifications are subject to change without notice

FRM

Rear Hub for MTB

FL-M TEAM - New

2006 Prices for Italian consumers only



SUPPLIED ON WHEELSETS: FL-M21 ZTR

Item no.	Code	DESCRIPTION	Price Euro	INTERCHANGEABILITY					
				FL-M Comp/Pro 04-05	FL-M Comp/Pro Disc 04/05	SP-M Pro	FL-M Pro 2006	FL-M Pro Disc 2006	FL-M Team Disc 2006
1	RHA01D	Hub Axle Assembled MTB. Lock-nut 135 mm / Light alloy	21,00	X	X	X	A	A	A
2	RHA01A	Axle Cup End for 5mm Allen Key / Light Alloy	1,90	X	X	X	A	A	A
3	RHA01C	Left Hand Adjustable Inner Nut / Light Alloy	3,00	X	X	X	A	A	A
4	3FH02DS	Rubber Seal: 24x17x1	0,25	A	A	X	A	A	A
5	RH4SD16T	Freehub Body Ass.: Sly Device 16T / Light Alloy/Steel	89,90	B	B	B	A	A	A
5a	RH04SL1	Freewheel Body Bearing Spacer / Light Alloy	0,50	A	A	A	A	A	A
5b	HB24155	Freewheel Body Middle Bearing 24 x 15 x 5 mm 6802 2RS	9,50	A	A	A	A	A	A
5c	RH04SLS	Freewheel Body for Shimano / Light Alloy	29,00	A	A	A	A	A	A
5d	RHLS07	Lips spring 0,7 mm	0,50	A	A	A	A	A	A
5e	RH04SD5	Freewheel Body Fixing Bolt M16 / High Tensile Steel	35,00	B	B	B	A	A	A
5f	RH04LP	Freewheel lip /High Tensile Steel	5,40 pc	A	A	A	A	A	A
5g	HB26175	Freewheel Body Inner Bearing 26 x 17 x 5 mm 6803 2RS	10,90	A	A	A	A	A	A
6	OR128SIL	O-Ring 128 in Silicon Rubber (Red)	0,60	X	X	X	A	A	A
7	RH04SL3A	Freewheel Body Washer / High Tens. Steel. 2,5 mm thick	3,00	A	A	A	A	A	A
8	RH04SHI	Steel shim 21,8x16,2x0,2	0,2	X	X	X	A	A	A
9	HB24126	Freewheel Body Outer Bearing 24x12x6 mm 6901 2RS	8,40	A	A	A	A	A	A
10	FLTRB32	Hub Body Carbon fibre/Alloy. Gold anodised. 32H	100,00	X	X	X	B	X	X
10	FLTRB28	Hub Body Carbon fibre/Alloy. Gold anodised. 28H	100,00	X	X	X	B	X	X
	RHLRSH11	Lock-ring in light alloy for cog-set – Shimano 11T	8,50	A	A	A	A	A	A
	RHLRSH12	Lock-ring in light alloy for cog-set – Shimano 12T	8,50	A	A	A	A	A	A

A: Same parts B: Parts are usable, but different in material, appearance, finish, size. X: Non-interchangeable

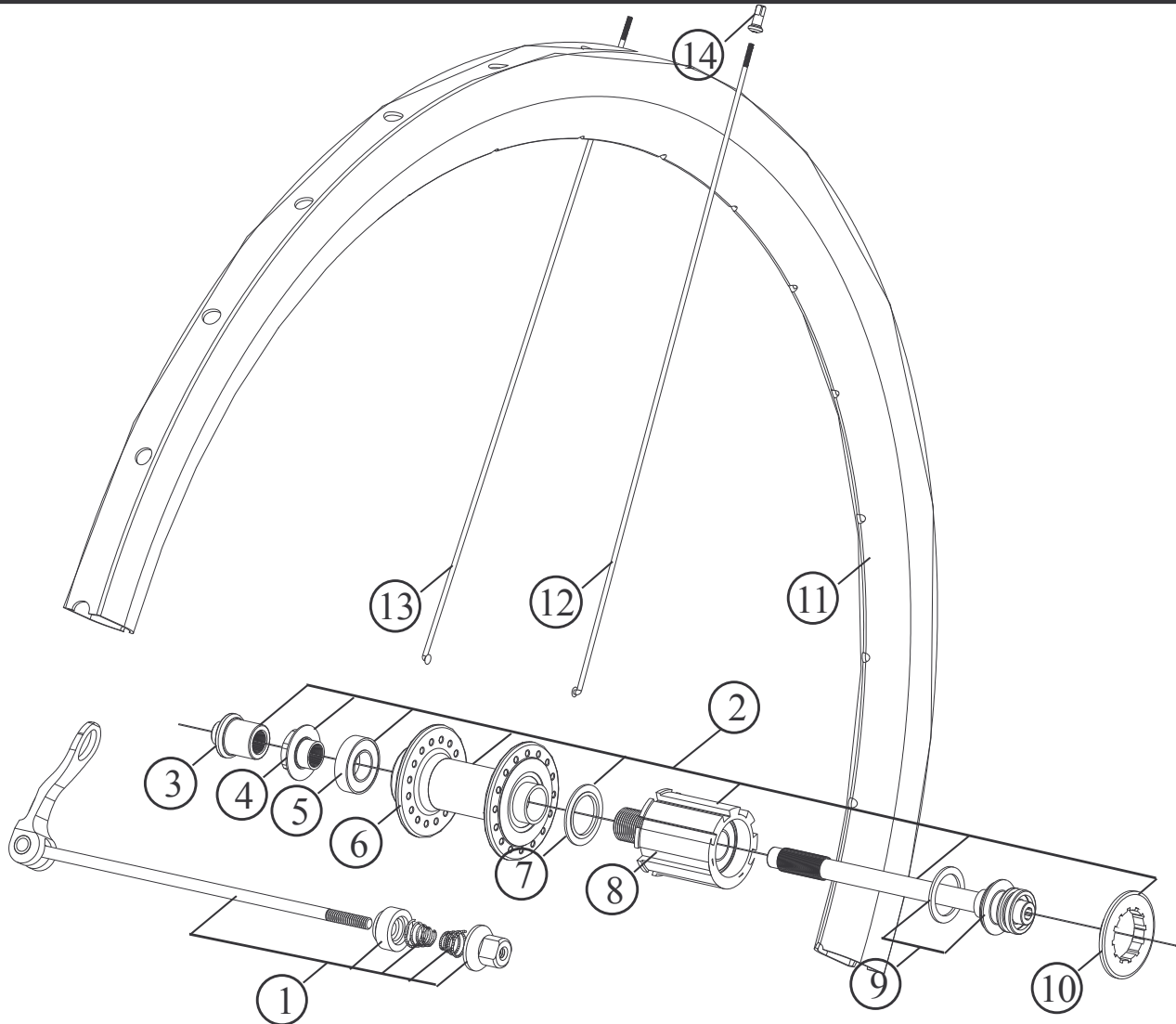
Specifications are subject to change without notice

FRM

Rear Wheel for Road Only

FL-R23 Aerolite Carbon - New

2006 Prices for Italian consumers only



Item no.	Code	DESCRIPTION	Price Euro	INTERCHANGEABILITY		
				ST-R21	FL-R21 Aerolite	FL-R12
1	QRRTEAM	Quick Release Assembly – Rear Team with 4 mm Titanium Axle	31,75	A	A	B
2	RFLRTCASH24	Rear Hub FL-R Team CA–24 holes. Shimano compatible. Gold or Silver	262,90	X	X	X
2	RFLRTCACA24	Rear Hub FL-R Team CA–24 holes. Campy compatible. Gold or Silver	262,90	X	X	X
3	RH003CA	Lock Nut for carbon fibre axle / Light alloy	3,50	X	A	X
4	RH02CCA	Inner Nut for carbon fibre axle / Light alloy	3,00	X	A	X
5	HB24126	Bearing 24x12x6 mm 6901 2RS	8,40	A	A	A
6	RH05G24	Hub Body M15 24 h: Light Alloy Flanges / Carbon Fibre – Silver	115,00	X	X	X
6	RH05G24G	Hub Body M15 24 h: Light Alloy Flanges / Carbon Fibre – Gold	115,00	X	X	X
7	RH04SL3B	Freewheel Body Washer / Hardened Steel. 1,5 mm thick	3,00	X	A	X
8	RHSD15S	Freewheel Body: Sly Device 15T/ Light Alloy-Titanium. For Shimano	89,90	A	A	A
8	RHSD15C	Freewheel Body: Sly Device 15T/ Light Alloy-Titanium. For Campy	89,90	A	A	A
9	FH04CCAA	Carbon Fibre Axle and Rubber Seal Assembly	25,75	X	A	X
10	RHLRSH11/12	Lock-Ring for Shimano Compatible Freewheel 11 or 12 T compatible	8,50	A	A	A
10	RHLRCA11/12	Lock-Ring for Campy Compatible Freewheel 11 or 12 T compatible	8,50	A	A	A
11	RWH00724	Carbon Fibre Rim for Tubulars – Medium Profile 38 mm High. 24 holes	338,90	X	X	X
12	DTAL280	Right Side DT Aerolite Bladed Spoke – Black. 280 mm. Cross 2. (12pcs)	3,41	X	X	X
13	DTAL282	Left Side DT Aerolite Bladed Spoke – Black. 282 mm. Cross 2. (12pcs)	3,41	X	X	X
14	DTENS	Light Alloy Nipples 2,0 mm – Silver. (24 pcs)	0,06	B	B	A

A: Same parts B: Parts are usable, but different in material, appearance, finish, size. X: Non-interchangeable

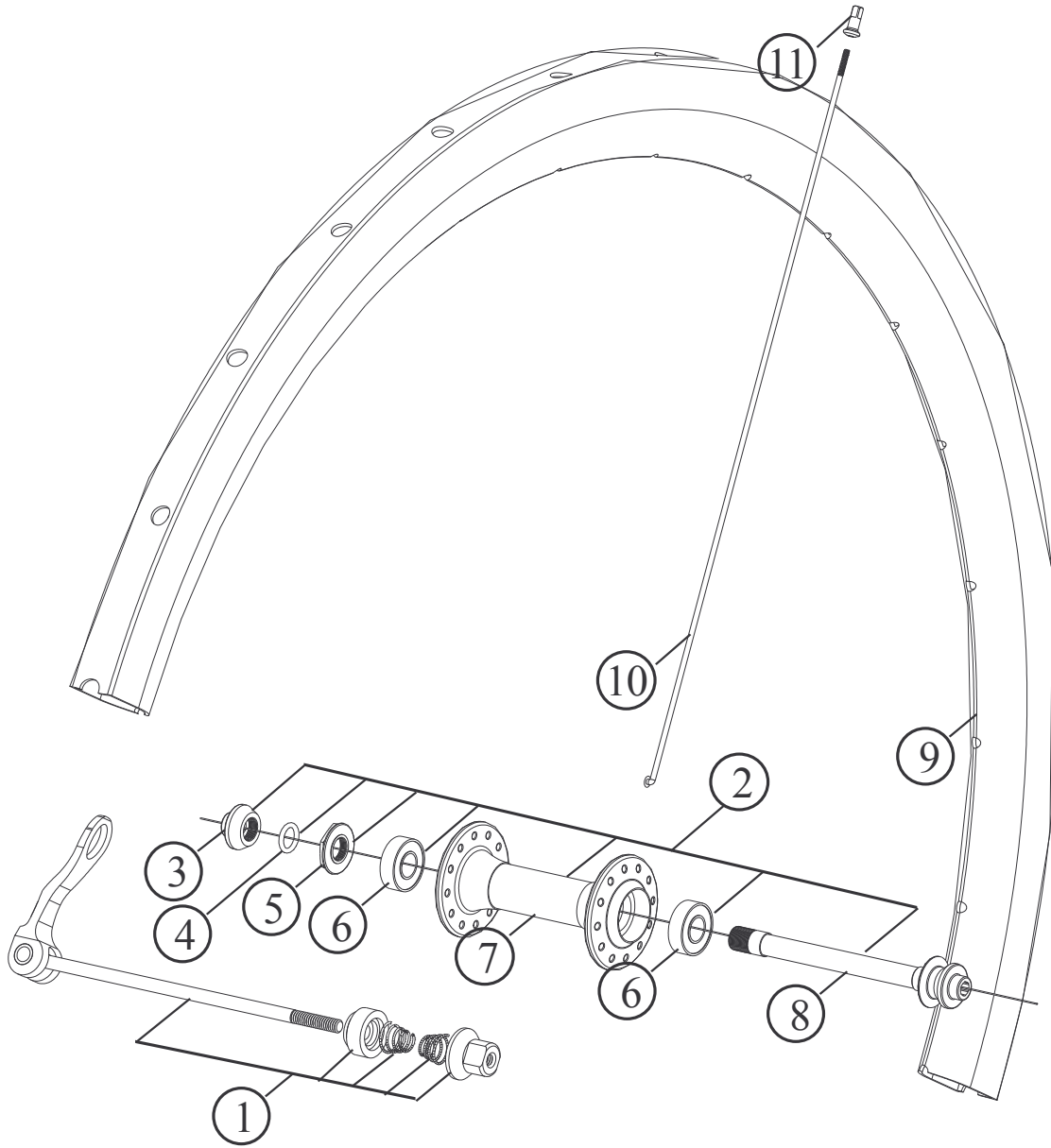
Specifications are subject to change without notice

FRM

Front Wheel for Road Only

FL-R23 Aerolite Carbon - New

2006 Prices for Italian consumers only



Item no.	Code	DESCRIPTION	Price Euro	INTERCANGEABILITY		
				ST-R21	FL-R21 Aerolite	FL-R12
1	QRFTEAM	Quick Release Assembly – Front Team with 4 mm Titanium Axle	31,75	A	A	B
2	FFLRTCAG20	Front Hub FL-R Team CA–20 holes. Gold	122,30	X	X	X
2	FFLRTCAS20	Front Hub FL-R Team CA–20 holes. Silver	122,30	X	X	X
3	FH003CA	Lock Nut for carbon fibre axle / Light alloy	3,50	X	A	X
4	FH02DCA	Silicon O-Ring	0,20	X	A	X
5	FH02CCA	Inner Nut for carbon fibre axle / Light alloy	3,00	X	A	X
6	HB2097	Bearing 20x9x7 mm 2RS	9,90	A	A	X
7	FH06B20G	Hub Body 20 h: Alloy Flanges (Gold) + Carbon Fibre Centre	70,00	X	X	X
7	FH06B20S	Hub Body 20 h: Alloy Flanges (Silver) + Carbon Fibre Centre	70,00	X	X	X
8	FH04CCA	Carbon Fibre Axle with bonded light alloy end	21,50	X	A	X
9	RWH00720	Carbon Fibre Rim for Tubulars – Medium Profile 38 mm High. 20 holes	338,90	X	X	X
10	DTAL273	Right Side DT Aerolite Bladed Spoke – Black. 273 mm. Radial. (20pcs)	3,41	X	X	X
11	DTENS	Light Alloy Nipples 2,0 mm – Silver. (20 pcs)	0,06	B	B	A

A: Same parts B: Parts are usable, but different in material, appearance, finish, size. X: Non-interchangeable

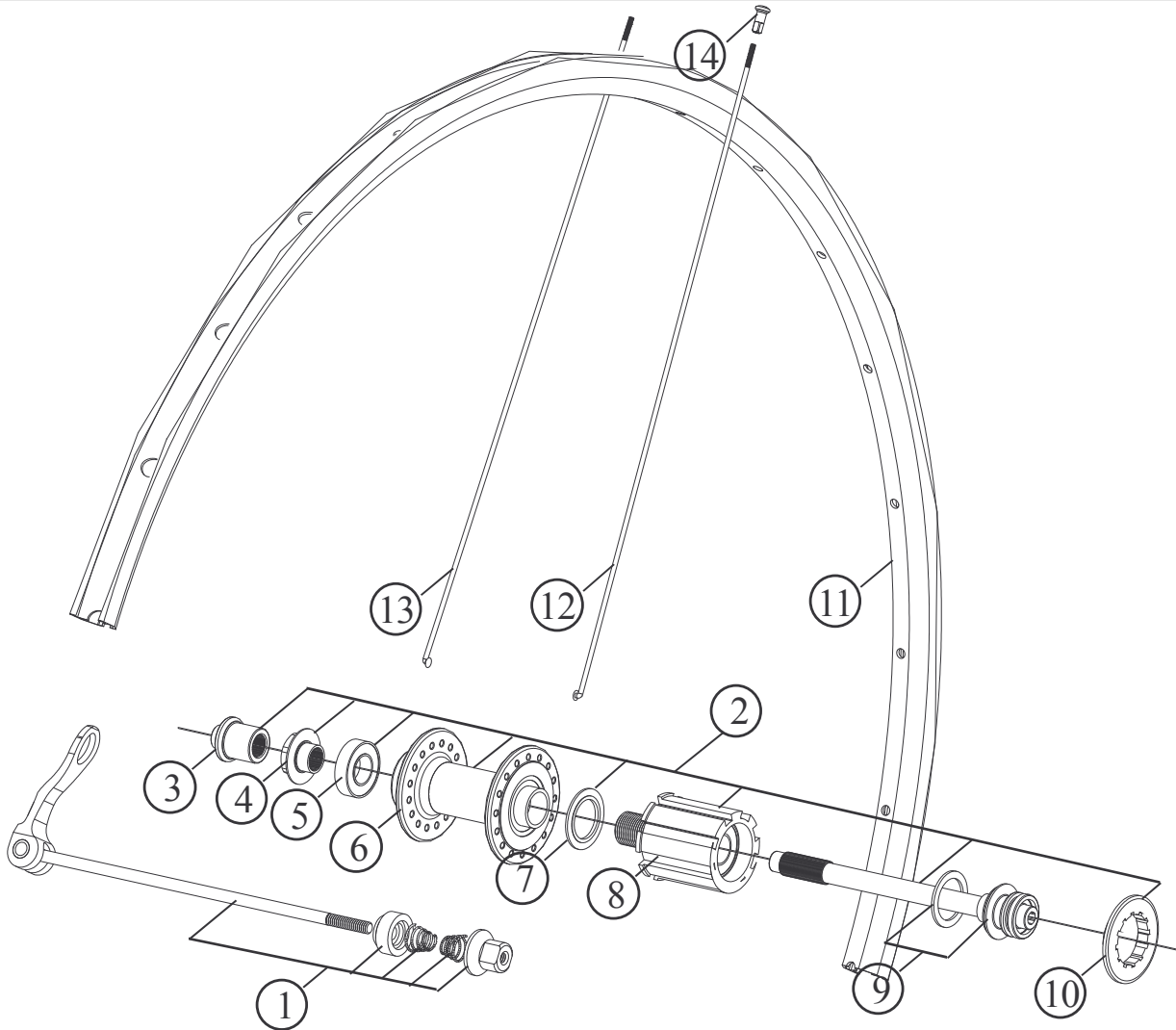
Specifications are subject to change without notice

FRM

Rear Wheel for Road Only

FL-R21 Aerolite - Modified

2006 Prices for Italian consumers only



Item no.	Code	DESCRIPTION	Price Euro	INTERCHANGEABILITY		
				ST-R21	FL-R23 Aerolite Carbon	FL-R12
1	QRRTEAM	Quick Release Assembly – Rear Team with 4 mm Titanium Axle	31,75	A	A	B
2	RFLRTCASH28	Rear Hub FL-R Team CA–28 holes. Shimano compatible. Gold or Silver	262,90	X	X	X
2	RFLRTCACA28	Rear Hub FL-R Team CA–28 holes. Campy compatible. Gold or Silver	262,90	X	X	X
3	RH003CA	Lock Nut for carbon fibre axle / Light alloy	3,50	X	A	X
4	RH02CCA	Inner Nut for carbon fibre axle / Light alloy	3,00	X	A	X
5	HB24126	Bearing 24x12x6 mm 6901 2RS	8,40	A	A	A
6	RH05G28	Hub Body M15 28 h: Light Alloy Flanges / Carbon Fibre – Silver	115,00	X	X	X
6	RH05G28G	Hub Body M15 28 h: Light Alloy Flanges / Carbon Fibre – Gold	115,00	X	X	X
7	RH04SL3B	Freewheel Body Washer / Hardened Steel. 1,5 mm thick	3,00	X	A	X
8	RHSD15S	Freewheel Body: Sly Device 15T/ Light Alloy-Titanium. For Shimano	89,90	A	A	A
8	RHSD15C	Freewheel Body: Sly Device 15T/ Light Alloy-Titanium. For Campy	89,90	A	A	A
9	FH04CCAA	Carbon Fibre Axle and Rubber Seal Assembly	25,75	X	A	X
10	RHLRSH11/12	Lock-Ring for Shimano Compatible Freewheel 11 or 12 T compatible	8,50	A	A	A
10	RHLRCA11/12	Lock-Ring for Campy Compatible Freewheel 11 or 12 T compatible	8,50	A	A	A
11	EST1428	EST14 Asymetric Aluminium Rim. 17 mm Wide -18 mm High. 28 holes	53,80	A	X	A
12	DTAL298	Right Side DT Aerolite Bladed Spoke – Black. 298 mm. Cross 3. (14pcs)	3,41	X	X	X
13	DTAL284	Left Side DT Aerolite Bladed Spoke – Black. 284 mm. Radial. (14pcs)	3,41	X	X	X
14	DTENSG	Light Alloy Nipples 2,0 mm – Gold. (28 pcs)	0,30	A	B	A
14	DTENS	Light Alloy Nipples 2,0 mm – Silver. (28 pcs)	0,06	A	A	A

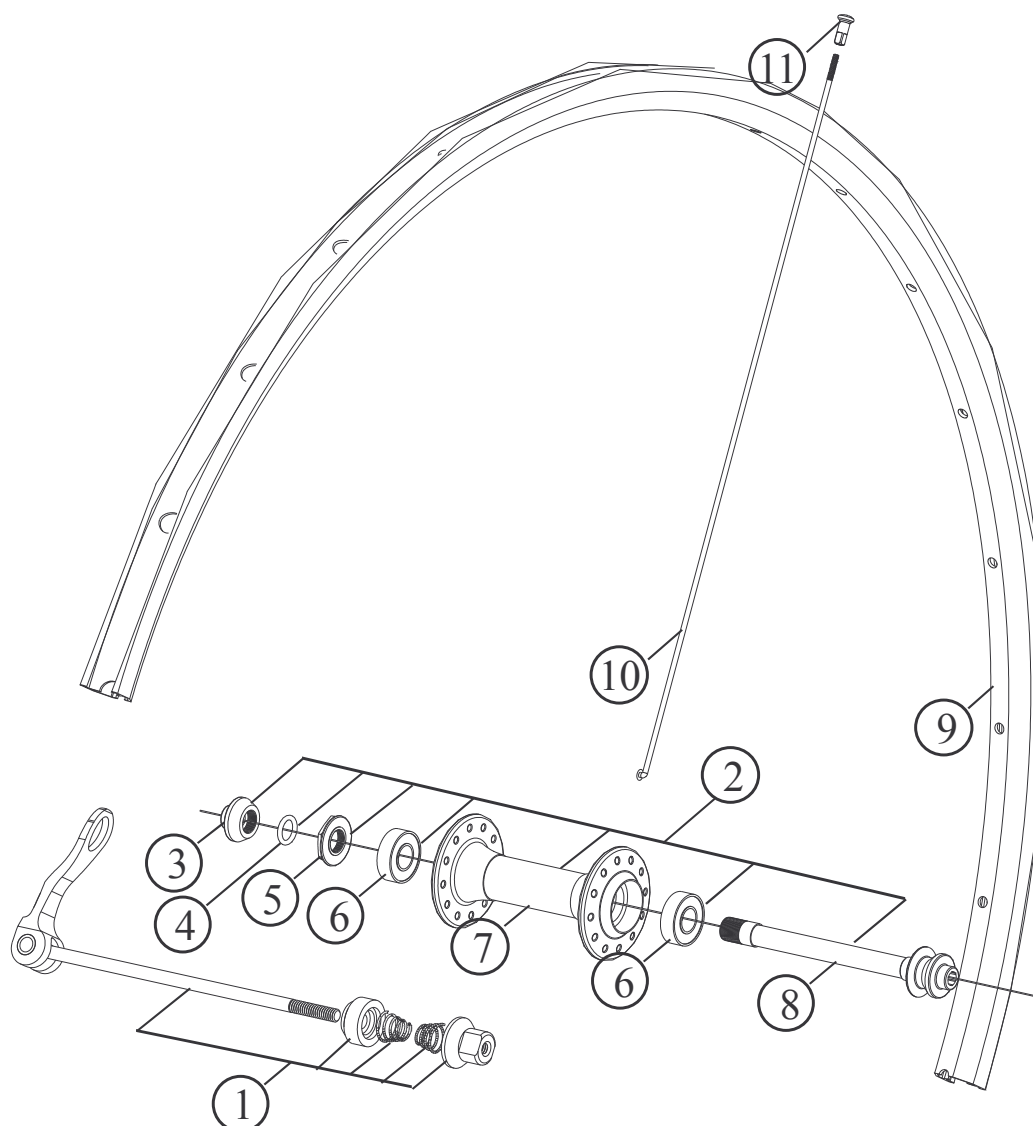
Note: Modified parts from model 2005 A: Same parts B: Parts are usable, but different in material, appearance, finish, size. X: Non-interchangeable

Specifications are subject to change without notice

FRM

Front Wheel for Road Only FL-R21 Aerolite - Modified

2006 Prices for Italian consumers only



Item no.	Code	DESCRIPTION	Price Euro	INTERCHANGEABILITY		
				ST-R21	FL-R23 Aerolite Carbon	FL-R12
1	QRFTEAM	Quick Release Assembly – Front Team with 4 mm Titanium Axle	31,75	A	A	B
2	FFLRTCAG24	Front Hub FL-R Team CA-24 holes. Gold	122,30	X	X	X
2	FFLRTCAS24	Front Hub FL-R Team CA-24 holes. Silver	122,30	X	X	X
3	FH003CA	Lock Nut for carbon fibre axle / Light alloy	3,50	X	A	X
4	FH02DCA	Silicon O-Ring	0,20	X	A	X
5	FH02CCA	Inner Nut for carbon fibre axle / Light alloy	3,00	X	A	X
6	HB2097	Bearing 20x9x7 mm 2RS	9,90	A	A	X
7	FH06B24G	Hub Body 24 h: Alloy Flanges (Gold) + Carbon Fibre Centre	70,00	X	X	X
7	FH06B24S	Hub Body 24 h: Alloy Flanges (Silver) + Carbon Fibre Centre	70,00	X	X	X
8	FH04CCA	Carbon Fibre Axle with bonded light alloy end	21,50	X	A	X
9	EST1324	EST13 Aluminium Rim. 17 mm Wide -18 mm High. 24 holes	46,80	A	X	A
10	DTAL284	DT Aerolite Bladed Spoke – Black. 284 mm. Radial. (24pcs)	3,41	X	X	X
11	DTENSG	Light Alloy Nipples 2,0 mm – Gold. (24 pcs)	0,30			
11	DTENS	Light Alloy Nipples 2,0 mm – Silver. (24 pcs)	0,06	A	B	A

Note: Modified parts from model 2005 A: Same parts B: Parts are usable, but different in material, appearance, finish, size. X: Non-interchangeable

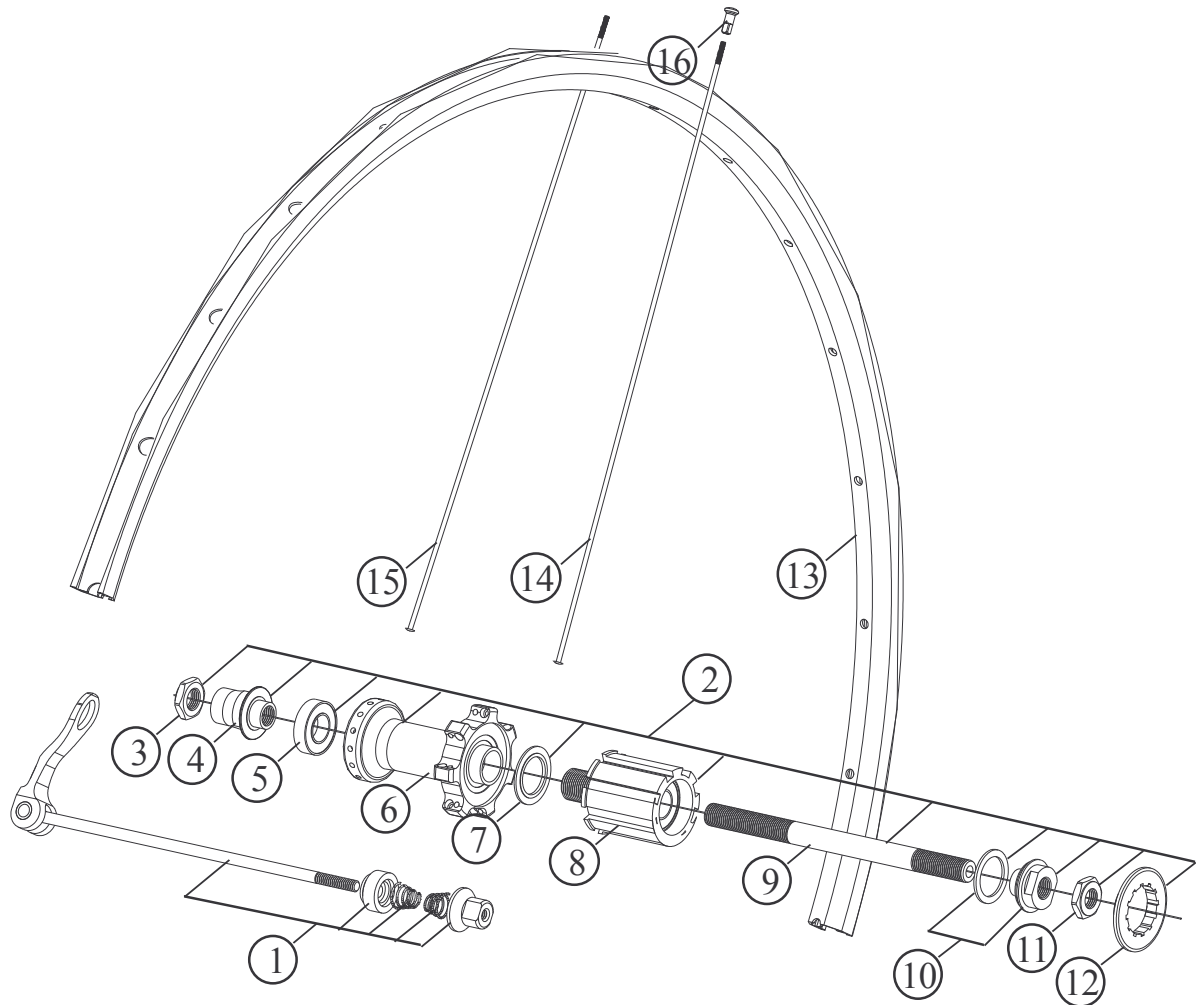
Specifications are subject to change without notice

FRM

Rear Wheel for Road Only

SP-R21 - Modified

2006 Prices for Italian consumers only



Item no.	Code	DESCRIPTION	Price Euro	INTERCHANGEABILITY		
				FL-R21 Aerolite Carbon	FL-R21 Aerolite	FL-R12
1	QRRTEAM	Quick Release Assembly – Rear Team with 4 mm Titanium Axle	31,75	A	A	B
2	RSPRTSH28	Rear Hub SP-R Team – 28 holes. Shimano compatible. Gold or Silver	244,50	X	X	X
2	RSPRTCA28	Rear Hub SP-R Team – 28 holes. Campy compatible. Gold or Silver	244,50	X	X	X
3	RH01B	Left hand Lock Nut: M10x17 mm / 4,5 mm / Light Alloy	1,90	X	X	X
4	RH02CRS	Right Hand Inner Nut: M10 x 16 mm / Light Alloy	3,00	X	X	X
5	HB24126	Bearing 24x12x6 mm 6901 2RS	8,40	A	A	A
6	RH05G28	Hub Body M15 28 h: Light Alloy Flanges / Carbon Fibre – Silver	115,00	X	X	X
6	RH05G28G	Hub Body M15 28 h: Light Alloy Flanges / Carbon Fibre – Gold	115,00	X	X	X
7	RH04SL3A	Freewheel Body Washer / Hardened Steel. 2,5 mm thick	3,00	X	A	X
8	RHSD15S	Freewheel Body: Sly Device 15T/ Light Alloy-Titanium. For Shimano	89,90	A	A	A
8	RHSD15C	Freewheel Body: Sly Device 15T/ Light Alloy-Titanium. For Campy	89,90	A	A	A
9	RH03AA	Hub Axle 140,6 mm / Dia. 10 mm / Light alloy	18,60	X	X	A
10	RH02CRSA	Right Hand Inner Nut: M10 x 16 mm / Light Alloy + Rubber Seal	3,25	X	X	X
11	RH01A	Right Hand Lock Nut: M10 x 17 mm / 4,5 mm thick / Steel	1,50	X	X	X
12	RHLRSH11/12	Lock-Ring for Shimano Compatible Freewheel 11 or 12 T compatible	8,50	A	A	A
12	RHLRCA11/12	Lock-Ring for Campy Compatible Freewheel 11 or 12 T compatible	8,50	A	A	A
13	EST1428	EST14 Asymmetric Aluminium Rim. 17 mm Wide -18 mm High. 28 holes	53,80	X	A	A
14	DTRESP303	Right Side DT Revolution Spoke–Straight Head. 303 mm. Cross 2. (14pcs)	0,68	X	X	X
15	DTRESP289	Left Side DT Revolution Spoke – Straight Head. 289 mm. Radial. (14pcs)	0,68	X	X	X
16	DTENSG	Light Alloy Nipples 2,0 mm – Gold. (28 pcs)	0,30	X	A	B
16	DTENS	Light Alloy Nipples 2,0 mm – Silver. (28 pcs)	0,06	A	A	A

Note: Modified parts from model 2005 A: Same parts B: Parts are usable, but different in material, appearance, finish, size. X: Non-interchangeable

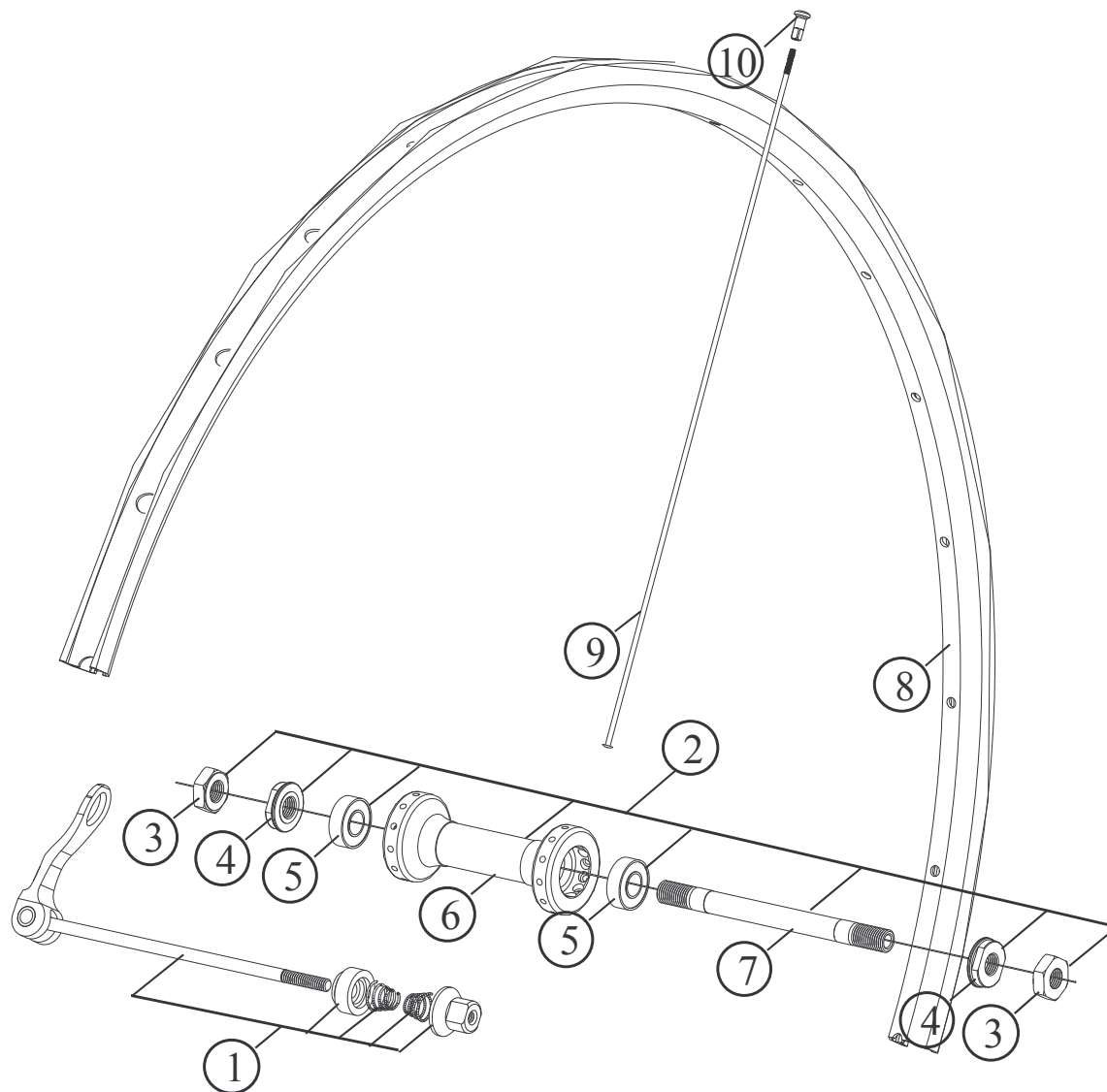
Specifications are subject to change without notice

FRM

Front Wheel for Road Only

SP-R21

2006 Prices for Italian consumers only



Item no.	Code	DESCRIPTION	Price Euro	INTERCHANGEABILITY		
				FL-R21 Aerolite Carbon	FL-R21 Aerolite	FL-R12
1	QRFTEAM	Quick Release Assembly – Front Team with 4 mm Titanium Axle	31,75	A	A	B
2	FSPRTG24	Front Hub SP-R Team – 24 holes. Gold	104,00	X	X	X
2	FSPRTS24	Front Hub SP-R Team – 24 holes. Silver	104,00	X	X	X
3	FH01C	Lock Nut: M9 x 17 mm / Thickness 5,5 mm / Light Alloy	1,90	X	X	A
4	FH02C	Inner Nut: M9 x 16 mm / Dia. 20 mm / Light Alloy	3,00	X	X	X
5	HB2097	Bearing 20x9x7 mm 2RS	9,90	A	A	X
6	FH07E24	Hub Body 24 h: Alloy Flanges + Carbon Fibre C. – Silver	65,00	X	X	X
6	FH07E24G	Hub Body 24 h: Alloy Flanges + Carbon Fibre C. - Gold	65,00	X	X	X
7	FH04C	Hub Axle 109 mm / Dia. 9mm / Light alloy	16,50	X	X	X
9	EST1324	EST13 Aluminium Rim. 17 mm Wide -18 mm High. 24 holes	46,80	X	A	A
10	DTRESP289	DT Revolution Spoke–Straight Head. Black. 289 mm. Radial. (24pcs)	3,41	X	X	X
11	DTENSG	Light Alloy Nipples 2,0 mm – Gold. (24 pcs)	0,30	X	A	B
11	DTENS	Light Alloy Nipples 2,0 mm – Silver. (24 pcs)	0,06	A	A	A

Note: Modified parts from model 2005 A: Same parts B: Parts are usable, but different in material, appearance, finish, size. X: Non-interchangeable

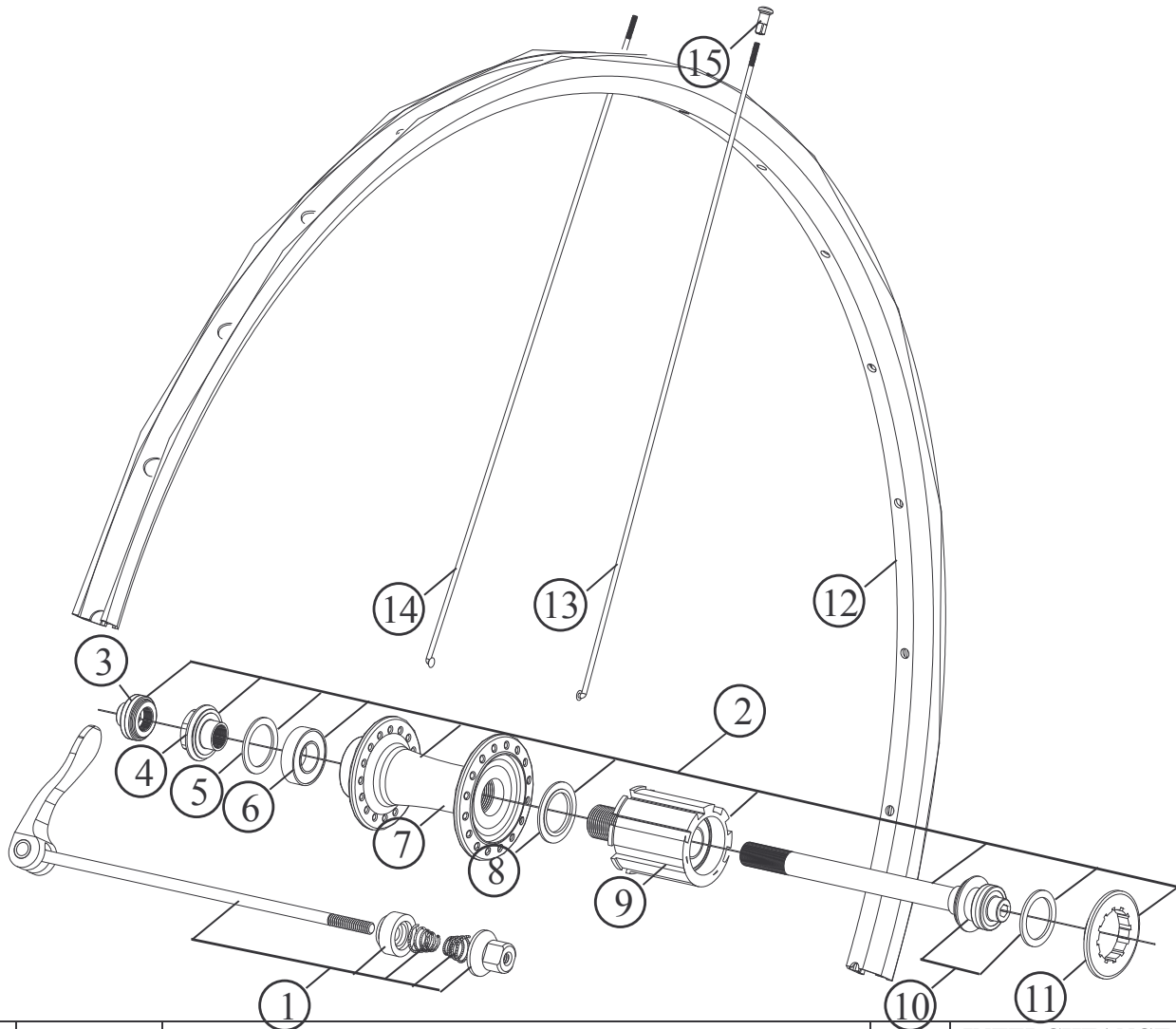
Specifications are subject to change without notice

FRM

Rear Wheel for Road Only

FL-R12 - Modified

2006 Prices for Italian consumers only



Item no.	Code	DESCRIPTION	Price Euro	INTERCHANGEABILITY		
				FL-R21 Aerolite Carbon	FL-R21 Aerolite	SP-R21
1	QRRPRO	Quick Release Assembly – Rear Pro with 5 mm Titanium Axle	28,10	B	B	B
2	RFLRPSH28	Rear Hub FL-R Pro – 28 holes. Shimano compatible. Black	189,30	X	X	X
2	RFLRPCA28	Rear Hub FL-R Pro – 28 holes. Campy compatible. Black	189,30	X	X	X
3	RHA01A	Axle Cup End for 5mm Allen Key / Light Alloy	1,90	X	X	X
4	RHA01C	Left Hand Adjustable Inner Nut / Light Alloy	3,00	X	X	X
5	3FH02DS	Rubber Seal: 24x17x1	0,25	A	A	A
6	HB24126	Bearing 24x12x6 mm 6901 2RS	8,40	A	A	A
7	RH06H28	Hub Body M16 28 holes / Light Alloy – Black	54,00	X	X	X
8	RH04SL3A	Freewheel Body Washer / Hardened Steel. 2,5 mm thick	3,00	X	X	A
9	RHSD15S	Freewheel Body: Sly Device 15T/ Light Alloy-Titanium. For Shimano	89,90	A	A	A
9	RHSD15C	Freewheel Body: Sly Device 15T/ Light Alloy-Titanium. For Campy	89,90	A	A	A
10	RHA01BA	Hub Axle & Seal Assembly. Lock-nut 130 mm / Light alloy	21,25	X	X	X
11	RHLRSH11/12	Lock-Ring for Shimano Compatible Freewheel 11 or 12 T compatible	8,50	A	A	A
11	RHLRCA11/12	Lock-Ring for Campy Compatible Freewheel 11 or 12 T compatible	8,50	A	A	A
12	EST1428	EST14 Asymmetric Aluminium Rim. 17 mm Wide -18 mm High. 28 holes	53,80	X	A	A
13	DTCO297	Right Side DT Competition Spoke. 297 mm. Cross 2. (14pcs)	0,42	X	X	X
14	DTCO292	Left Side DT Competition Spoke. 292 mm. Cross 2. (14 pcs)	0,42	X	X	X
15	DTENS	Light Alloy Nipples 2,0 mm – Silver. (28 pcs)	0,06	A	A	A

Note: Modified parts from model 2005 A: Same parts B: Parts are usable, but different in material, appearance, finish, si X: Non-interchangeable

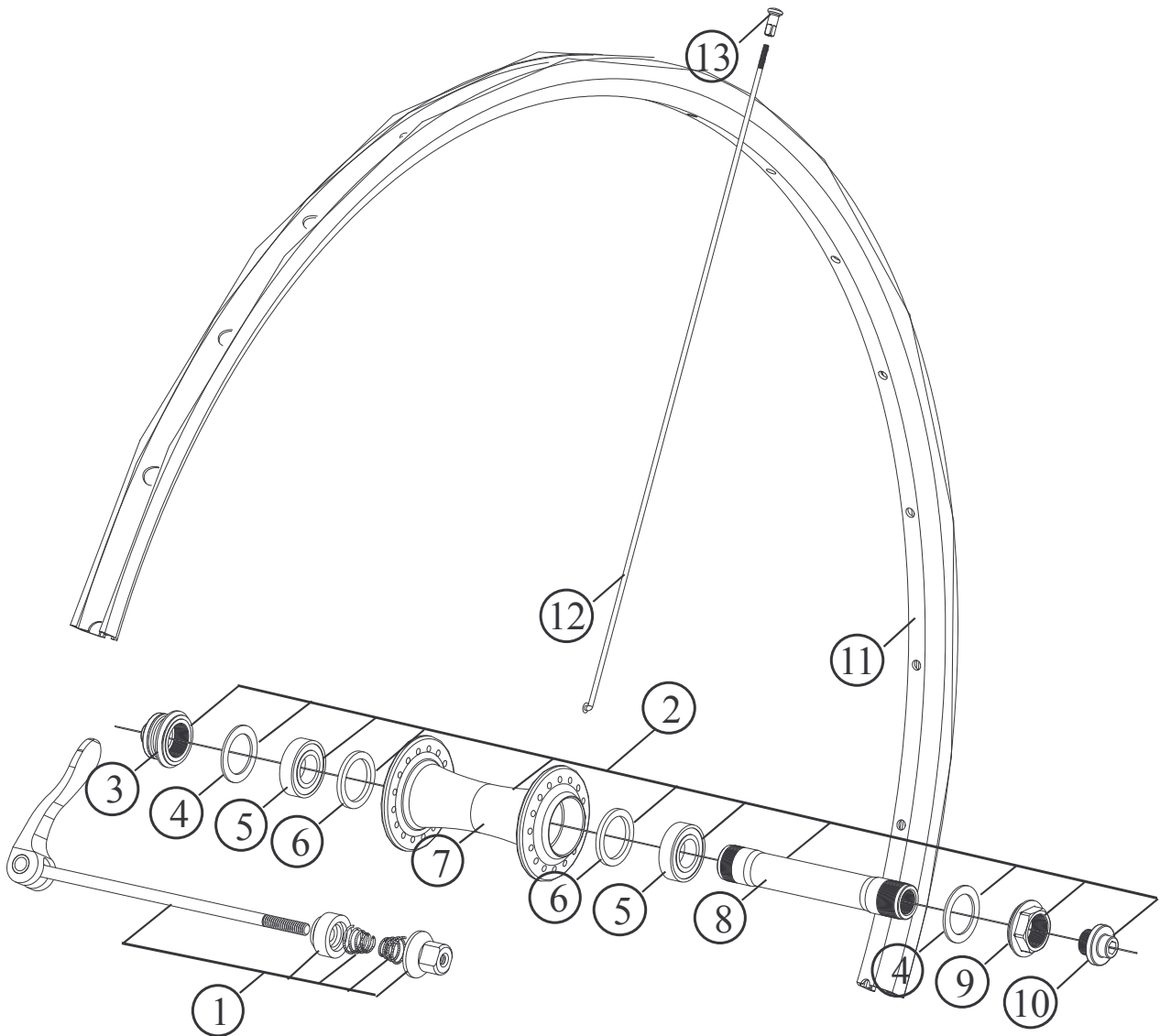
Specifications are subject to change without notice

FRM

Front Wheel for Road Only

FL-R12 – Modified

2006 Prices for Italian consumers only



Item no.	Code	DESCRIPTION	Price Euro	INTERCHANGEABILITY		
				FL-R21 Aerolite Carbon	FL-R21 Aerolite	SP-R21
1	QRFPRO	Quick Release Assembly – Front Pro with 5 mm Titanium Axle	28,10	B	B	B
2	FFLRP24	Front Hub FL-R Pro – 28 holes. Shimano compatible. Black	89,90	X	X	X
3	FH 0415	Axle Cap End: M15 with rubber shield / L. alloy	3,25	X	X	X
4	3FH02DS	Rubber Seal: 24x17x1	0,25	X	X	X
5	HB24155	Bearing 24x15x5 mm 6802 2RS	8,40	X	X	X
6	FH05A1	Bearing Spacer 23,8x18x1,6 mm / Light Alloy	0,60	X	X	X
7	FH07F24	Hub Body 24 holes / Light Alloy, Black	45,00	X	X	X
8	FH0315	Hub Axle 92,5 mm / Dia 15 mm / Light Alloy	31,00	X	X	X
9	FH0215	Inner Nut: M15x17 / Light alloy	3,25	X	X	X
10	FH0115	Axle Cap End: M10,5 Long 13,5 / Light Alloy	2,00	X	X	X
11	EST1424	EST13 Aluminium Rim. 17 mm Wide -18 mm High. 24 holes	46,80	X	A	A
12	DTC0294	DT Competition Spoke. 294 mm. Cross 2. (24 pcs)	0,42	X	X	X
13	DTENS	Light Alloy Nipples 2,0 mm – Silver. (24 pcs)	0,06	A	A	A

Note: Modified parts from model 2005 A: Same parts B: Parts are usable, but different in material, appearance, finish, size. X: Non-interchangeable

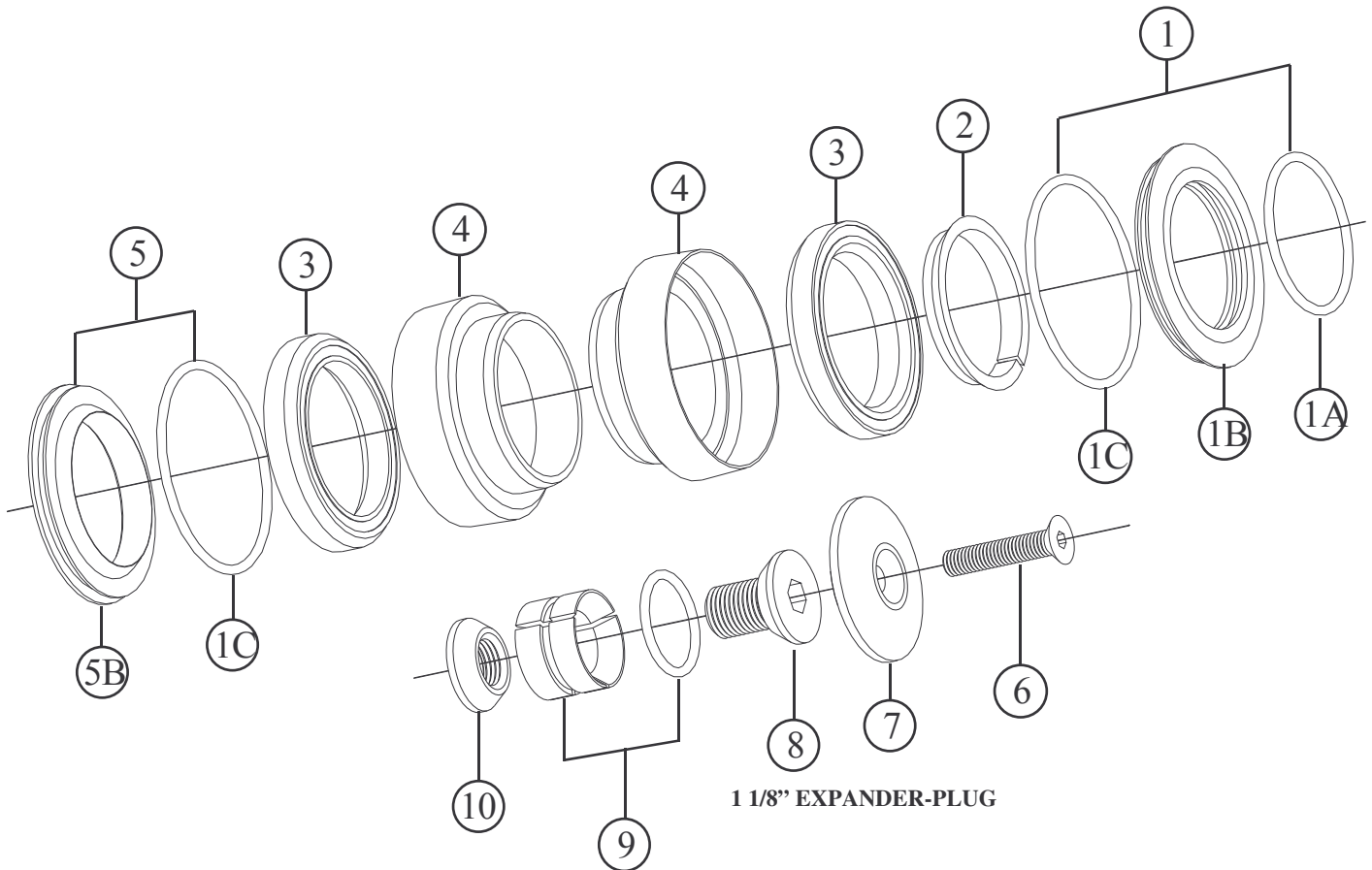
Specifications are subject to change without notice

FRM

Head Set

C-SET & C-SET TEAM 1 1/8" - Modified

2006 Prices for Italian consumers only



Item no.	Code	DESCRIPTION	Price Euro	INTERCHANGEABILITY						
				C-Set 1"	A-Set 1"	A-Set 1 1/8"	C-Set OS			
1	HSC201	Upper Head Cone Assembly	5,60	X	X	X	A			
1A	OR2112	O-Ring 2112 (I.D.28,30x1,78 mm)	-	X	X	X	A			
1B	HSC201B	Upper Head Cone Housing / Light Alloy	5,40	X	X	X	A			
1C	OR2137	O-Ring 2137 (I.D.33,05x1,78 mm)	-	X	A	X	A			
2	HSC202	Upper Head Split Cone / Light Alloy	2,30	X	X	X	A			
3	TH-872	Cartridge Bearing Micro ABC 36° x 36° 41,5x30,15x6,5	8,30	X	X	X	A			
3	TH-872SS	As above but in Stainless Steel for the Team model	15,00	X	X	B	A			
4	HSC204	Lower or Upper Head Cup Housing 34,1 mm / Black	6,40	X	X	X	A			
4	HSC204G	Lower or Upper Head Cup Housing 34,1 mm / Gold	10,40	X	X	B	X			
5	HSC205	Lower Head Cone Assembly	3,40	X	X	X	X			
5B	HSC205A	Lower Head Cone Housing 30 mm / Light Alloy	3,30	X	X	X	X			
6	TSCCE525	Bolt for play adjustment M5 x 25 Cone-Head / Steel	0,30	A	A	A	A			
6	TSCCE525E	As above but in light alloy (gold) for the Team model	1,80	B	B	B	A			
7	EP201	Cap / Light Alloy	4,00	X	X	A	A			
7	EP201C	Cap / Carbon fibre for the Team model	8,50	X	X	A	A			
8	EP102	Male Cone Bolt / Light Alloy	2,00	A	A	A	A			
9	EP203	Three-Piece Expander with O-Ring 122	3,00	X	X	A	A			
10	EP104	Female Cone Nut / Light Alloy	1,00	A	A	A	A			

Note: Modified parts from model 2005

A: Same parts

B: Parts are usable, but different in material, appearance, finish, size.

X: Non-interchangeable

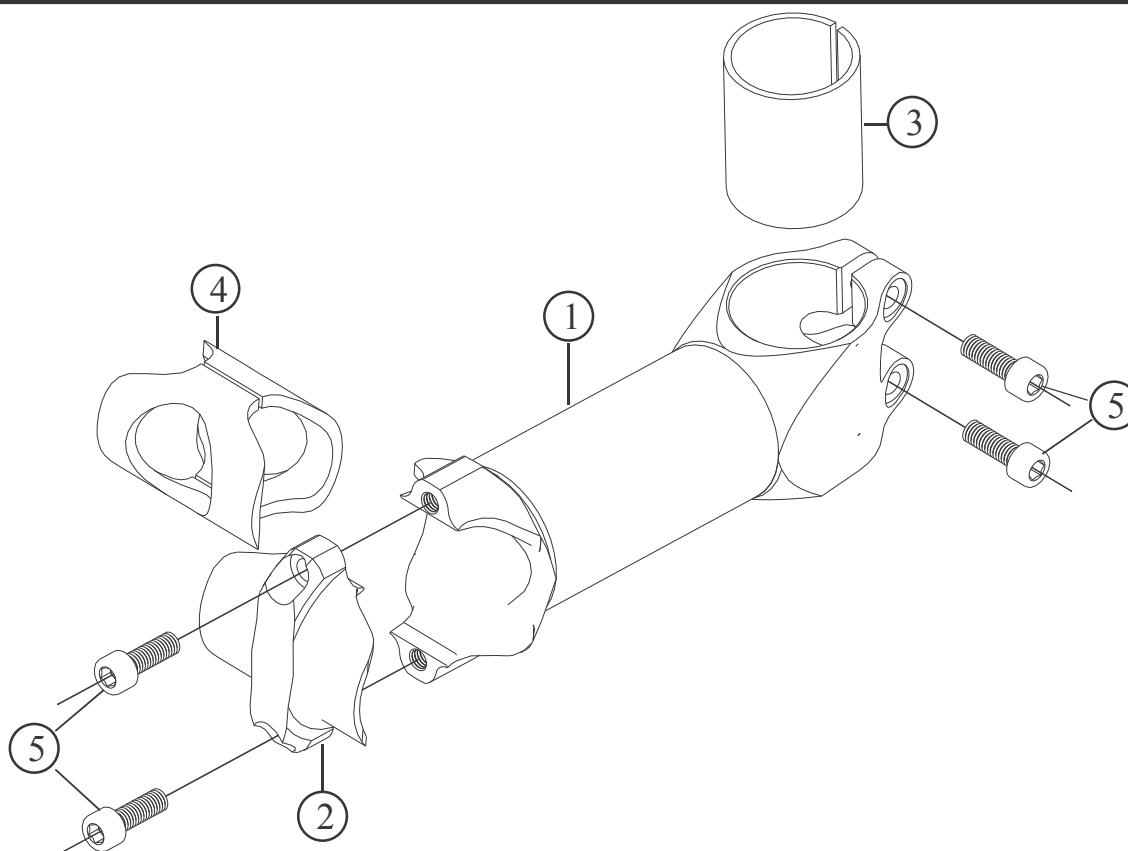
Specifications are subject to change without notice

FRM

Stem for Road & MTB

Web-Stem CF - Web-Stem FC Ti. – **WEB-STEM 32 – WEB-STEM 32 Ti. - NEW**

2006 Prices for Italian consumers only



Item no.	Code	DESCRIPTION	Price Euro	INTERCHEANGEABILITY					
				Web Stem WC	Web Stem WC Ti	Net Stem			
1	WS05AL	Carbon fibre Stem Shaft 90 mm (Gold or Black) 31,8 mm	77,00	X	X	X			
1	WS05BL	Carbon fibre Stem Shaft 100 mm (Gold or Black) 31,8 mm	77,00	X	X	X			
1	WS05CL	Carbon fibre Stem Shaft 110 mm (Gold or Black) 31,8 mm	77,00	X	X	X			
1	WS05DL	Carbon fibre Stem Shaft 120 mm (Gold or Black) 31,8 mm	77,00	X	X	X			
1	WS05EL	Carbon fibre Stem Shaft 130 mm (Gold or Black) 31,8 mm	77,00	X	X	X			
1	WS05BL	Light alloy Stem Shaft 100 mm (Black) 31,8 mm	61,20	X	X	X			
1	WS05CL	Light alloy Stem Shaft 110 mm (Black) 31,8 mm	61,20	X	X	X			
1	WS05DL	Light alloy Stem Shaft 120 mm (Black) 31,8 mm	61,20	X	X	X			
1	WS05EL	Light alloy Stem Shaft 130 mm (Black) 31,8 mm	61,20	X	X	X			
2	WS06	Stem Cap	12,00	X	X	X			
3	WS03	Sleeve for 1" forks	2,70	A	A	X			
4	WS04	Sleeve for 26,0 mm handlebars	6,80	X	X	X			
5	TCC515S	Allen Bolt M5x15 / Steel	0,20	A	B	X			
5	TCC515T	Allen Bolt M5x15 / Titanium	5,70	B	A	X			

A: Same parts
 B: Parts are usable, but different in material, appearance, finish, size.
 X: Non-interchangeable

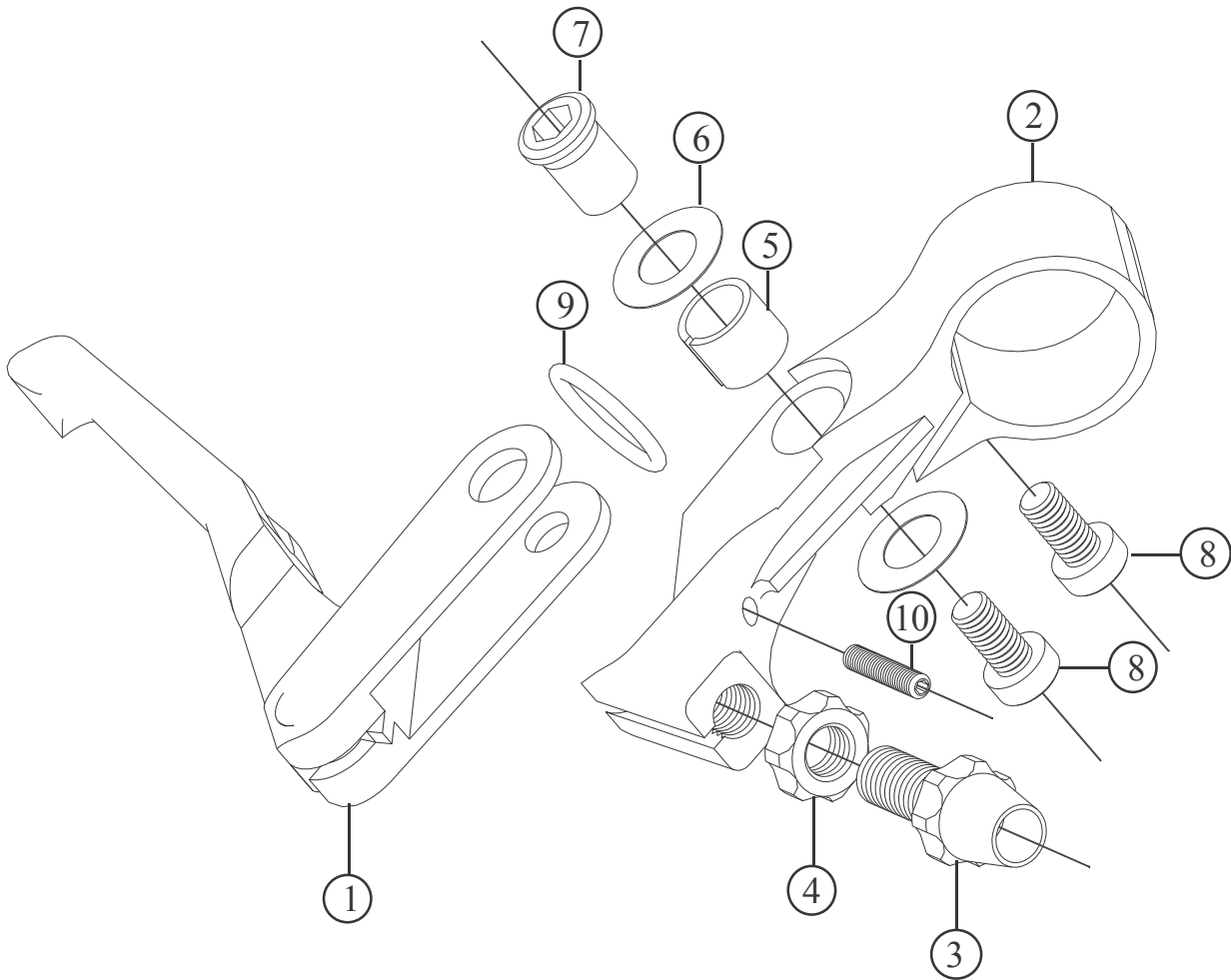
Specifications are subject to change without notice

FRM

Brake Lever for MTB

DP4 DP4 SL - Modified

2006 Prices for Italian consumers only



Item no.	Code	DESCRIPTION	Price Euro	INTERCHEANGEABILITY					
				DP3	DP4 2003				
1	BL01R2	Right hand Brake Lever / Light Alloy	28,00	B	B				
1	BL01L2	Left Hand Brake Lever / Light Alloy	28,00	B	B				
2	BL02R	Right hand Brake Body / Light Alloy - Black	28,00	B	A				
2	BL02L	Left Hand Brake Body / Light Alloy - Black	28,00	B	A				
2	BL02RG	Right hand Brake Body / Torx in Light Alloy - Gold	28,00	B	A				
2	BL02LG	Left Hand Brake Body / Torx in Light Alloy - Gold	28,00	B	A				
3	BL03	Cable Adjusting Body / Light Alloy	3,20	A	A				
4	BL04	Cable Adjusting Nut / Light Alloy	2,00	A	A				
5	BL05	Bushing / DU	0,50	A	A				
6	BL06	Shim / Nylon 0,3 mm thick	0,05	A	A				
7	BL07	Pivot / Light Alloy	2,00	A	A				
8	TCC510	Allen bolt M5x10 / Steel	0,15	A	A				
8	TCC510E	Torx bolt M5x10 aluminium (DP4 SL)	1,70	B	B				
9	OR2056	Return Spring / Silicon O-Ring 2056 (I.D.14x1,78mm)	0,20	X	A				
10	BL08	Reach Adjusting Dowel	0,05	A	A				

Note: Modified parts from model 2005

A: Same parts
 B: Parts are usable, but different in material, appearance, finish, size.
 X: Non-interchangeable

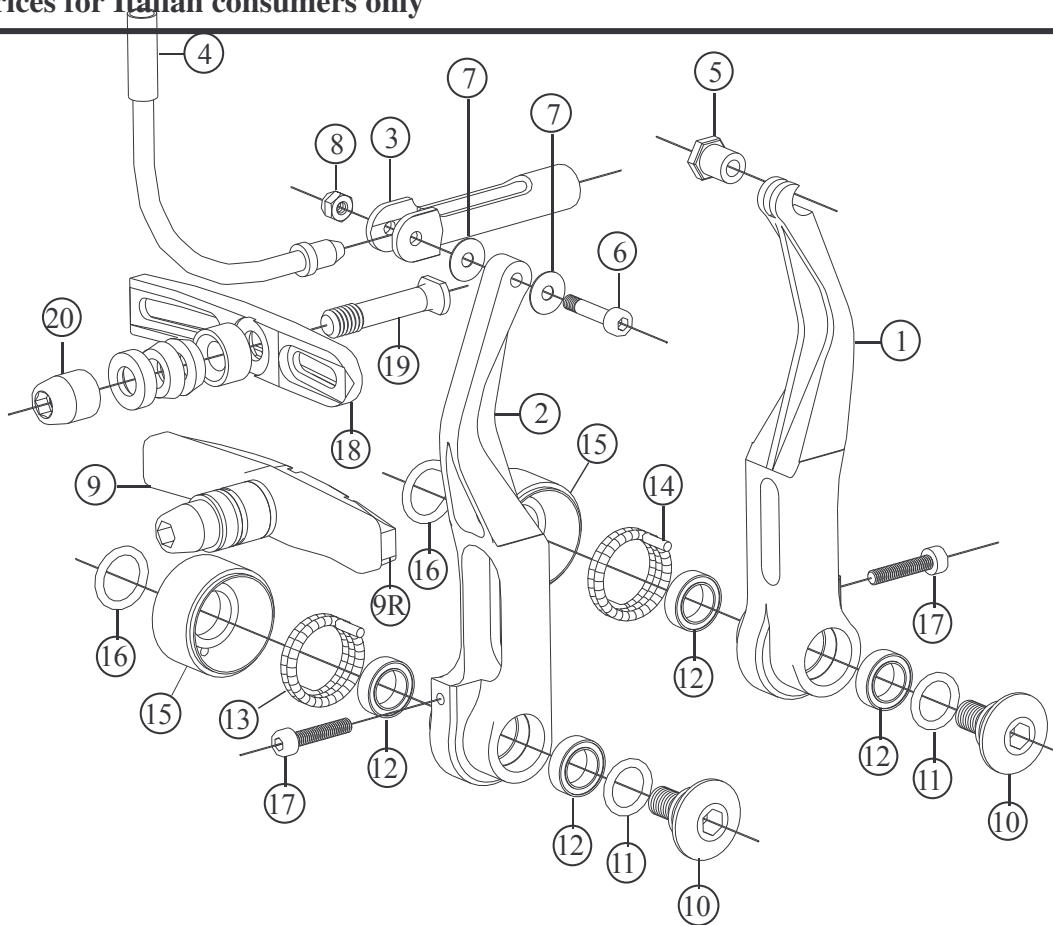
Specifications are subject to change without notice

FRM

V-Brakes for MTB

DP4 DP4 Ti. (Modified)

2006 Prices for Italian consumers only



Item no.	Code	DESCRIPTION	Price Euro	INTERCHANGEABILITY	
				Direct Pull	Swing Link
1	VB01L	Left Arm – Black	30,00	X	X
1	VB01LG	Left Arm – Gold	30,00	X	X
2	VB01R	Right Arm - Black	30,00	X	X
2	VB01R	Right Arm - Gold	30,00	X	X
3	VB03	Inner Cable Lead Hook	8,00	A	X
4	VB04	Inner Cable Lad Unit (90°)	5,00	A	X
5	VB05	Cable fixing Nut and Dowell	2,00	A	A
6	VB06	Allen Bolt M3x16 mm	0,06	A	X
7	VB07	Plastic Washer	0,04	A	X
8	2040401	Self-loking Nut M3	0,03	A	X
9	955VC	Cartridge-Type Pad Holder with Multicondition pads & hardware. Set (pair)	9,80	X	X
9R	955VCR	Replacement Pads. Multicondition. Set (Pair)	3,70	X	X
10	VB08	Fixing Bolt (M6) / Steel	2,50	X	X
11	OR108	O-Ring 108 (I.D. 8,73 x 1,78 mm)	-	X	X
12	VB12835	Bearing 12x8x3,5 ZZ	2,00	X	X
13	VB09CS	Clockwise Spring (Stiffer than before)	0,80	X	X
14	VB09ACS	Anti-Clockwise spring (stiffer than before)	0,80	X	X
15	VB10	Spring Shield	1,30	X	X
16	OR2043	O-Ring 2043 (I.D. 10,82 x 1,78 mm)	-	X	X
17	TCC315	Spring Tension Adjustment Screw (Allen Bolt M3x15 mm)	0,06	B	B
18	VB11	CNC Pad holder (non jet in production)	-	X	X
19	DP4 Ti.-PHST	Pad Holder Stud in Titanium for DP4 Ti.	7,00	X	X
20	DP4 Ti.-PHN	Pad Holder Nut in Light Alloy (Gold anodized) for DP4 Ti.	1,75	X	X

Note: Modified parts from model 2005

A: Same parts

B: Parts are usable, but different in material, appearance, finish, size.

X: Non-interchangeable

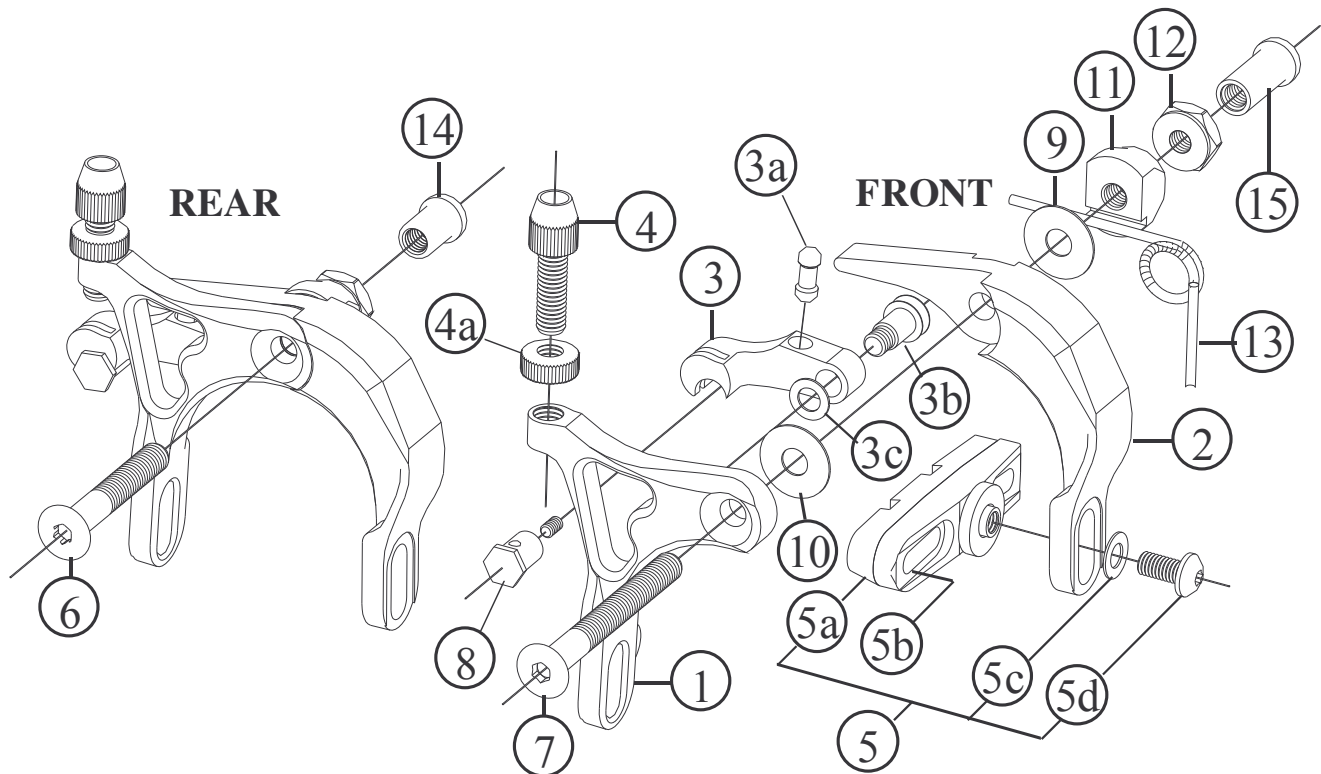
Specifications are subject to change without notice

FRM

Brakes for Road

CL2, CL2 Ti., CL2 Team CALIPER - Modified

2006 Prices for Italian consumers only



Item no.	Code	DESCRIPTION	Price Euro	INTERCHANGEABILITY	
				Caliper 2004	CL2 2005
1	CL2AF	A Arm (Front)	18,00	X	A
2	CL2BF	B Arm (Front)	18,00	X	A
3	CL2C	C Arm (Front)	12,60	X	A
3a	CL2CA	Push-Rod (Steel)	1,80	X	A
3b	CL2CB	C-Arm Pivot (Steel)	1,80	X	A
3c	CL2CC	Pivot Washer (9x6x0,5 mm)	0,30	X	A
4	CL201	Cable Adjusting Barrel (M6)	2,80	X	A
4a	CL202	Cable Adjusting Nut	1,60	X	A
5	456C	Pad Holder. Steel Hardware & Multicondition Pads	Set of 2 pcs 9,50	B	B
5	CL2-PH Pro	Pad Holder. Alloy /Ti. Hardware & Swiss Stop Green Pads	Set of 2 pcs 30,80	B	B
5	CL2-PH Team	Pad Holder. Carbon fibre body. Alloy/Ti. Hardware & S.S.G. Pads	Set of 2 pcs 70,60	B	B
5a	461	Multicondition 3 Stage Replacement Pads	Set of 2 pcs 3,70	B	B
5a	2006-04-04	Swiss Stop Green Replacement Pads	Set of 2 pcs 9,80	B	B
5a	2006-05-04	Swiss Stop Yellow Replacement Pads for Carbon Fibre Rims	Blister of 4 pcs 32,10	B	A
5b	CL2A-PH	Cartridge Pad Holder with Alloy Hardware	Set of 2 pcs 8,00	B	A
5c	SW	Steel Washer	0,05	A	A
5d	TCC510	Pad Holder Fixing Bolt in Steel (M5x10 mm)	0,10	B	A
5d	TCC510Ti.	Pad Holder Fixing Bolt in Titanium (M5x10 mm)	6,40	B	A
6	CL204	Rear Brake Axle in Steel (M6x40 mm)	5,00	X	A
6	CL204Ti.	Rear Brake Axle in Titanium (M6x40 mm)	10,00	X	A
7	CL205	Front Brake Axle in Steel (M6x55 mm)	6,30	X	A
7	CL205Ti.	Front Brake Axle in Titanium (M6x55 mm)	12,00	X	A
8	CL210	Cable Anchor Light Alloy)	3,60	X	A
9	WD016	Plastic Washer (16x6x0,6 mm)	0,50	X	A
10	WD0161	Plastic Washer (16x6x1 mm)	0,50	X	A
11	CL206	Spring Holder (Light Alloy)	2,50	A	A
12	CL207	Lock-Nut (Light Alloy)	1,10	X	A
13	CL2RS	Steel Spring	0,80	X	A
14	CL209	Rear Axle Lock-Nut (Short)	2,25	X	A
15	CL208	Front Axle Lock-Nut (Long)	2,25	X	A

A: Same parts B: Parts are usable, but different in material, appearance, finish, size. X: Non-interchangeable

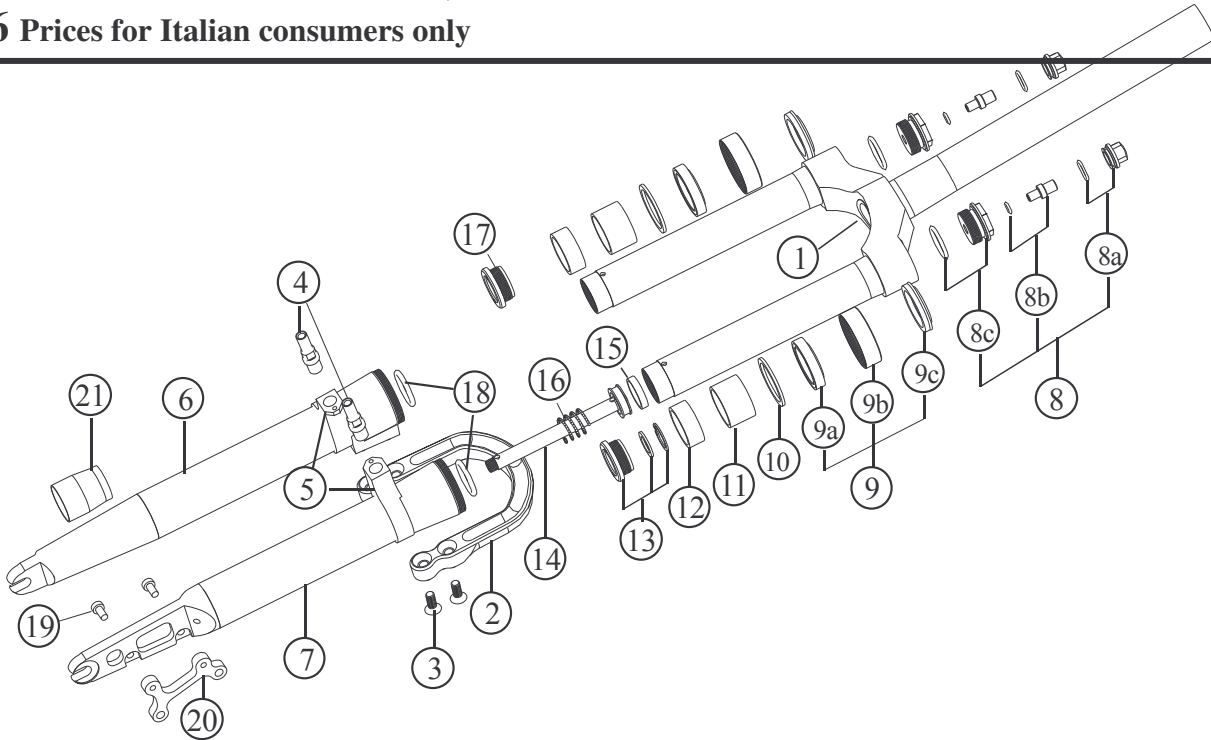
Specifications are subject to change without notice

FRM

Suspension Fork

AIR-WAY 90 CARBON, BICARBON and BICARBON Ti. (Modified)

2006 Prices for Italian consumers only



Item no.	Code	DESCRIPTION	Price Euro	INTERCHANGEABILITY				
				Air-Way 68	Air-Way 83 RB	Air-Way 83 FullCar.	Air-Way 100	Air-Way 120-125
1	06E	Crown Assembly / Light Alloy Steerer Tube (Air-Way 90 Carbon)	231,00	A	A-B	B	X	X
1	06CE	Crown Assembly / Carbon Fibre Steerer Tube (Air-Way BiCarbon)	308,00	X	B	A	X	X
2	03RB	Reversed Brace / Light Alloy (revised and lighter)	68,00	X	A	X	X	X
3	04	Brace Fixing Bolt / Cone Head M6x14 mm / Steel	0,25	A	A	X	A	A
3	04T	Brace Fixing Bolt / Cone Head M6x14 mm / Titanium laser etched	9,50	A	A	X	A	A
4	05S	Brake Stud / Light Alloy M10x8 mm (V-Brake model only)	3,50	A	A	X	X	X
5	05C	Right Hand or Left Hand Rim Brake Collars (V-Brake model only)	9,00	X	A	X	X	X
6	01RBC	Right Lower Leg / Carbon Fibre	151,00	X	X	X	X	X
7	02RBC	Left Lower Leg / Carbon Fibre	174,00	X	X	X	X	X
8	21A	Air Valve Assembly	10,30	A	A	A	A	A
8a	21C	Air Valve Cap & O-Ring 2050 (I.D. 12,42x1,78 mm)	2,10	A	A	A	A	A
8b	21D	Air Valve & O-Ring 2025 (I.D. 6,07x1,78 mm)	4,10	A	A	A	A	A
8c	21B	Air Valve Body & O-Ring 128 (I.D. 20,63x 1,78 mm)	4,10	A	A	A	A	A
9	AW83SA	Seals Assembly	11,50	B	B	B	X	X
9b	17	Oil Seal Lock Ring / Light Alloy	5,00	B	B	B	X	X
9a	16	Oil Seal 28x38x7 mm	4,50	X	X	X	X	X
9c	SA28	Dust Seal	2,50	X	X	X	X	X
10	15	Shim / Light Alloy 37,5x30x2 mm	1,50	A	A	A	X	X
11	14	Upper Bushing / Iglodur W300 32x28x20 mm	6,50	A	A	A	X	X
12	13	Lower Bushing / Polyzene 32x27x12 mm	4,00	A	A	A	A	A
13	07	Oil Valve Assembly (1 Body+1 Washer+1 Seger)	6,00	A	A	A	A	A
13a	07S	Oil Valve Snap Ring 20 UNI 3654	0,10	A	A	A	A	A
13b	07LM	Oil Valve Shim 19,8x14x1,5mm	0,45	A	A	A	A	A
13c	07C	Oil Valve Body / Synthetic	5,00	A	A	A	A	A
14	08E	Piston/Shaft Assembly / Light Alloy	14,50	X	X	X	X	X
15	11	Piston Seal FG 15049 4,9x1,5 mm	0,50	A	A	A	A	A
16	09	Negative – Top-Out Spring 17 x 20 mm	2,10	A	A	A	X	A
17		Bushing Cap – Right Arm	4,00	B	B	B	A	A
18	10A	Bottom-Out Damper / O-Ring 4100 (I.D. 24,99x3,53 mm)	-	A	A	A	A	A
19	24A	Disc Mount Fixing Bolt / Allen M5 x10 mm	0,15	A	A	A	A	A
20	24	Disc Brake Mount / Light Alloy	18,60	A	A	A	X	X
21	OST06	Oil Seal Tool	4,00	A	A	A	X	X
		Motul Fork Oil Factory Line – Light 200 cc	7,50	A	A	A	A	A
		Motul Fork Oil Factory Line – Light 1.000 cc	29,00	A	A	A	A	A

Note: Modified parts from model 2005

A: Same parts

B: Parts are usable, but different in material, appearance, finish, size, etc.

X: Non-interchangeable

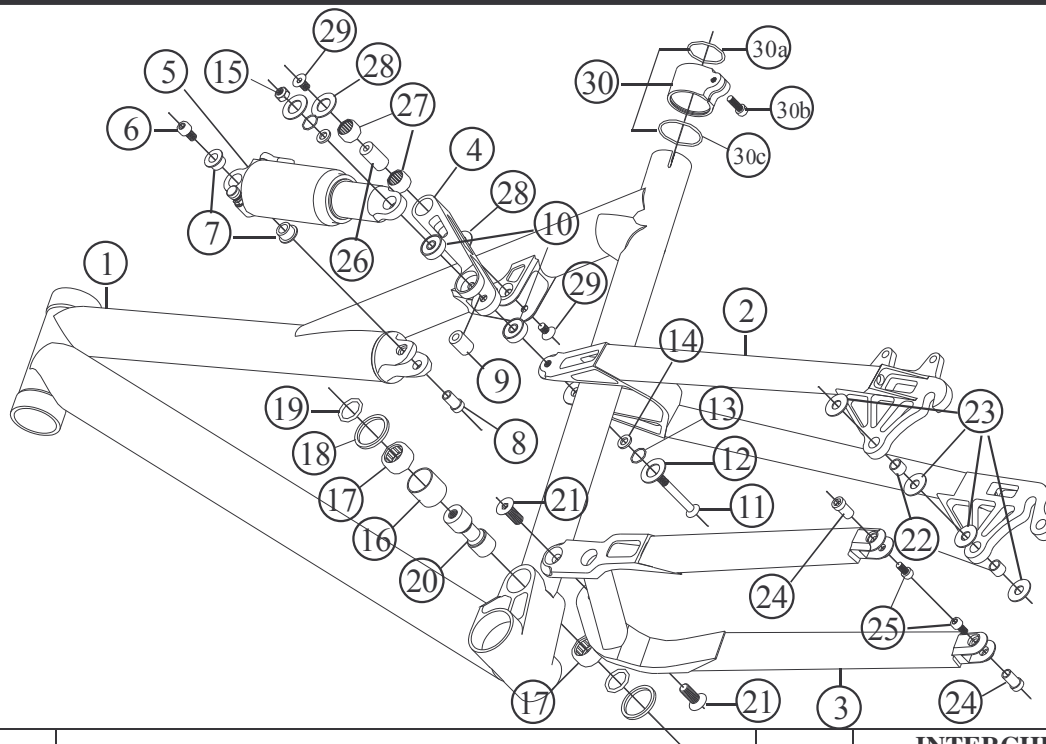
Specifications are subject to change without notice

FRM

Suspension Frame

12 HP - New

2006 Prices for Italian consumers only



Item no.	Code	DESCRIPTION	Price Euro	INTERCHANGEABILITY		
				Be Active Plus	10HP	Be Mad
1	12HPMF06	Main Frame Black anodised (17,5" –19" – 20,5")	600,00	X	X	X
2	SSBAP03	Seat-Stay Assembly	200,00	A	X	X
3	CSBAP03	Chain-Stay Assembly	200,00	A	X	X
4	12HPSL06	Swing Link (Gold anodised)	29,00	X	X	X
5	XFO2P165	Rear Shock Kind Shok Focus - Lockable (165 mm eye to eye)	180,00	A	A	X
5	XFO2P165	Rear Shock Rock Shox MC3,3 Stable Platform+Lockable (165 mm eye to eye)	280,00	A	A	X
5	HRV200S	Rear Shock DT HRV200 Stable Platform (165 mm eye to eye)	525,00	A	A	X
6	TCE610	Allen Bolt M6 x 10 mm	0,14	X	A	X
7	UESBAXF	Spacer of Shock Upper Eye (2 pcs) Specify Shock Type	1,00 pc	A	A	X
8	HLP03	Axle of the Shock Upper Eye (Light Alloy)	2,14	X	A	X
9	LEAXF	Axle of Shock Lower Eye. Specify Shock type	1,00	A	A	A
10	BB1966	Ball Bearing 19x6x62RS (2 pcs)	2,50 pc	X	A	X
11	TSE650	Cone-Headed Bolt M6x50 mm (Non Commercial - Special Design)	6,30	X	X	X
12	WD022	Plastic Washer dia. 22 mm (2 pcs)	0,56 pc	A	A	X
13	OR12085	O-Ring 11,7x0,85 (2pcs)	0,10 pc	X	X	X
14	SW1215	Steel Washer 12x1,5 mm (6pcs)	0,05 pc	X	A	X
15	SNM6	Self-Locking nut M6	0,09	A	A	A
16	MPRS	Bearings Spacer	1,00	A	A	A
17	MPR96	Main Pivot Needle Bearing (2pcs)	6,50 pc	A	A	A
18	WD030	Plastic Washer dia. 30 mm (2pcs)	0,75 pc	A	A	A
19	ORD22	O-Ring dia. 22 mm (2pcs)	0,14 pc	A	A	A
20	MPA97	Main Pivot Axle (Light Alloy with Steel Sleeves)	9,70	A	A	A
21	TSE820	Cone-Headed Bolt M8x20 (2 pcs)	0,23 pc	A	A	A
22	HLB96	DU Horst Link Bushing (2 pcs)	0,61 pc	A	X	A
23	WD018	Plastic Washer dia. 18 mm (4 pcs)	0,52 pc	A	X	A
24	HLP96	Horst Link Axle (2pcs)	2,14 pc	A	X	X
25	TCE610	Allen Bolt M6x10 (2 pcs)	0,14 pc	A	X	X
26	RAA96	Rocker Arm Axle (hardened steel)	3,50 pc	A	X	X
27	RAR96	Bocker Arm Needle Bearing (2pcs)	4,80 pc	A	X	X
28	WD022	Plastic Washer dia. 22 mm (2pcs)	0,56 pc	A	X	X
29	TSE610	Cone-Headed Bolt M6x10 mm (2 pcs)	0,14 pc	A	X	X
30	SSC	Sealed Seatpost Clamp	17,50	A	A	X
30a	ORSSC1	O-Ring 2106 26,07x1,78	0,14	A	A	X
30b	ORSSC2	O-Ring 2125 31,47x1,78	0,15	A	A	X
30c	TCE515	Allen Bolt M5x15	0,15	A	A	X

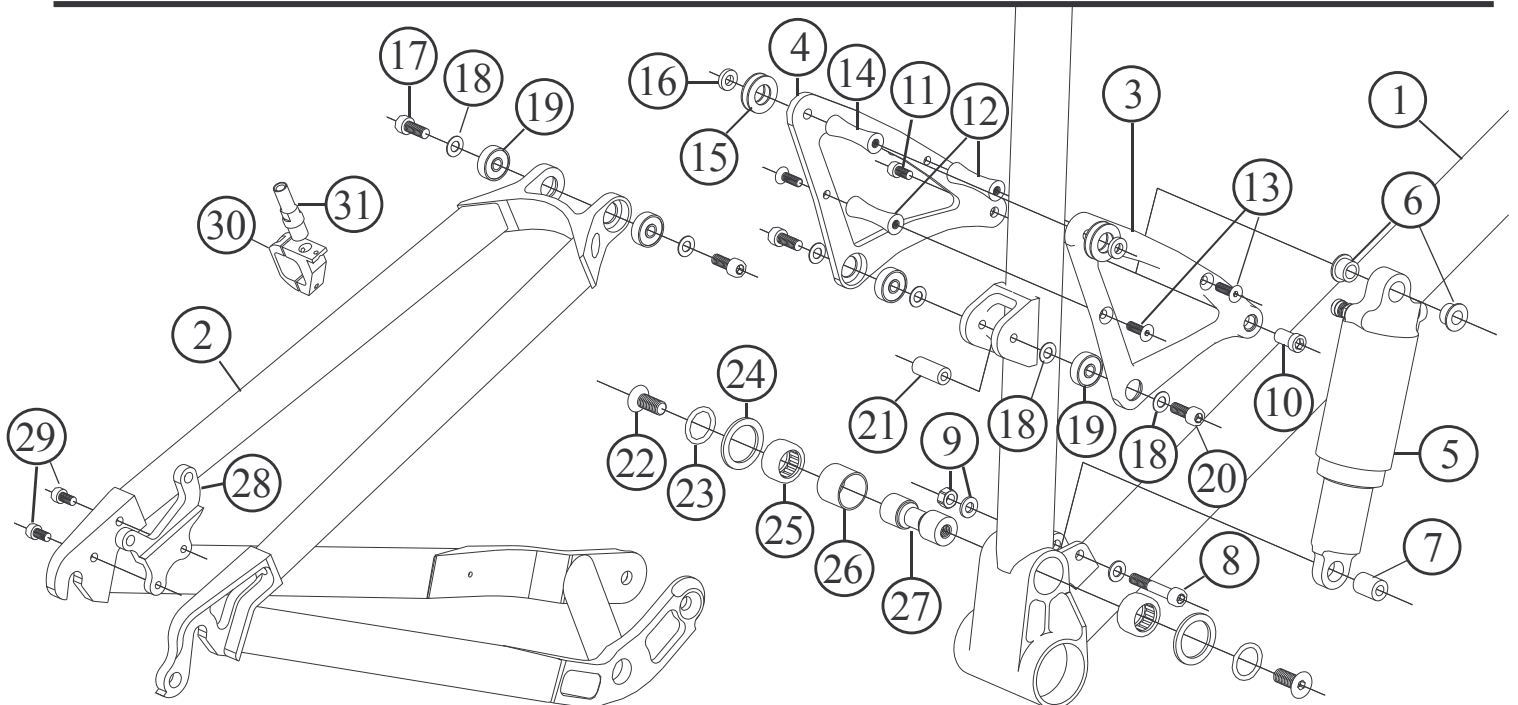
A: Same parts B: Parts are usable, but different in material, appearance, finish, size, etc. X: Non-interchangeable

Specifications are subject to change without notice

FRM

10HP- Shock modified

2006 Prices for Italian consumers only



A: Same parts B: Parts are usable, but different in material, appearance, finish, size, etc. X: Non-interchangeable

Item no.	Code	DESCRIPTION	Price Euro	INTERCHANGEABILITY		
				12HP	Be Active Plus	Be Mad 2004-2005
1	HMPF03	Main Frame Titan anodised (17,5" –19" – 20,5")	590,00	X	X	X
2	HPS03	One-Piece Suspension	400,00	X	X	X
3	HPRAR04	Rocker Arm Right Plate (Black Anodised)	21,80	X	X	X
4	HPRAL04	Rocker Arm Left Plate (Black Anodised)	21,80	X	X	X
5	XFO2P165	Rear Shock Kind Shok Focus - Lockable (165 mm eye to eye)	180,00	A	X	X
5	XFO2P165	Rear Shock Rock Shox MC3,3 Stable Platform+Lockable (165 mm eye to eye)	280,00	A	A	X
5	HRV200S	Rear Shock DT HRV200 Stable Platform (165 mm eye to eye)	525,00	A	A	X
6	UES10HP	Spacer of the Shock Upper Eye (2 pcs) Specify shock type	1,50	A	A	X
7	LEAXF	Axle of Shock Lower Eye – Specify shock type	1,00	A	A	A
8	TCE635	Allen Bolt M6 x 35 & Washer	0,27	X	B	B
8	TCE635Ti.	OPTIONAL: Allen Bolt M6 x 35 Titanium	8,50	X	A	A
9	SNM6E	OPTIONAL: Self-Locking Nut M6 Light Alloy	0,90	B	B	B
9	SNM6	Self-Locking nut M6 & Washer	0,09	A	A	A
10	HLP03	Axle of the Shock Upper Eye (Light Alloy)	2,14	A	B	X
11	TCE610	Allen Bolt M6x10	0,14	A	A	X
11	TCE610E	OPTIONAL: Allen Bolt M6x10 Light Alloy	1,50	B	A	X
12	HPRS5	Fuse-Shaped Spacer M5 (2pcs)	3,40 pc	X	X	A
13	TSE515	Cone-Headed Bolt M5x15 (4 pcs)	0,14 pc	X	X	A
14	HPRS6	Fuse-Shaped Spacer M6	3,40	X	X	X
15	WD022	Plastic Washer dia. 22 mm (4 pcs)	0,56 pc	A	A	A
16	BW1245	Brass Washer 12x4,5 mm (2pcs)	0,50 pc	X	X	X
17	TCE625	Allen Bolt M6x25 (2pcs)	0,22 pc	X	X	X
17	TCE625Ti.	OPTIONAL: Allen Bolt M6x25 Titanium (2pcs)	8,50 pc	X	X	X
18	SW1215	Steel Washer 12x1,5 mm (6pcs)	0,05 pc	A	X	A
19	BB1966	Ball Bearing 19x6x62RS (4pcs)	2,50 pc	A	X	A
20	TCE620	Allen Bolt M6x20 (2pcs)	0,20 pc	X	X	B
20	TCE620Ti.	OPTIONAL: Allen Bolt M6x20 Titanium (2pcs)	7,50 pc	X	X	A
21	HPRAS6	Light Alloy Rod M6	3,00	X	X	X
22	TSE820	Cone-Headed Bolt M8x20 (2 pcs)	0,23 pc	A	B	B
22	TSE820Ti.	OPTIONAL: Cone-Headed Bolt M8x20 Titanium (2 pcs) Laser Etched	12,10 pc	B	A	A
23	ORD22	O-Ring dia. 22 mm (2pcs)	0,14 pc	A	A	A
24	WD030	Plastic Washer dia. 30 mm (2pcs)	0,75 pc	A	A	A
25	MPR96	Main Pivot Needle Bearing (2pcs)	6,50 pc	A	A	A
26	MPRS	Bearings Spacer	1,00	A	A	A
27	MPA97	Main Pivot Axle (Light alloy with steel sleeves)	9,70	A	A	A
28	DISC96	Disc Brake Adaptor	18,90	X	A	A
29	TCE512	Allen Bolt M5 x12 mm (2pcs)	0,10 pc	X	A	A
30	CB99	V-Brake Collar (2pcs)	12,90 pc	A	A	X
31	ACS96	Brake stud M8	3,50	A	A	X

FRM

Manufactured and distributed by:

The Bike Shop

Via Mattei 18/a

48025 Riolo Terme (RA)

Italy

tel. +39 0546 70310

fax +39 0546 74623

e-mail: info@frmbike.com

www.frmbike.com